

approx. 114

791

320

900

Maximum deflection of the upper arm

Wd

Ld

Depending on the drive type

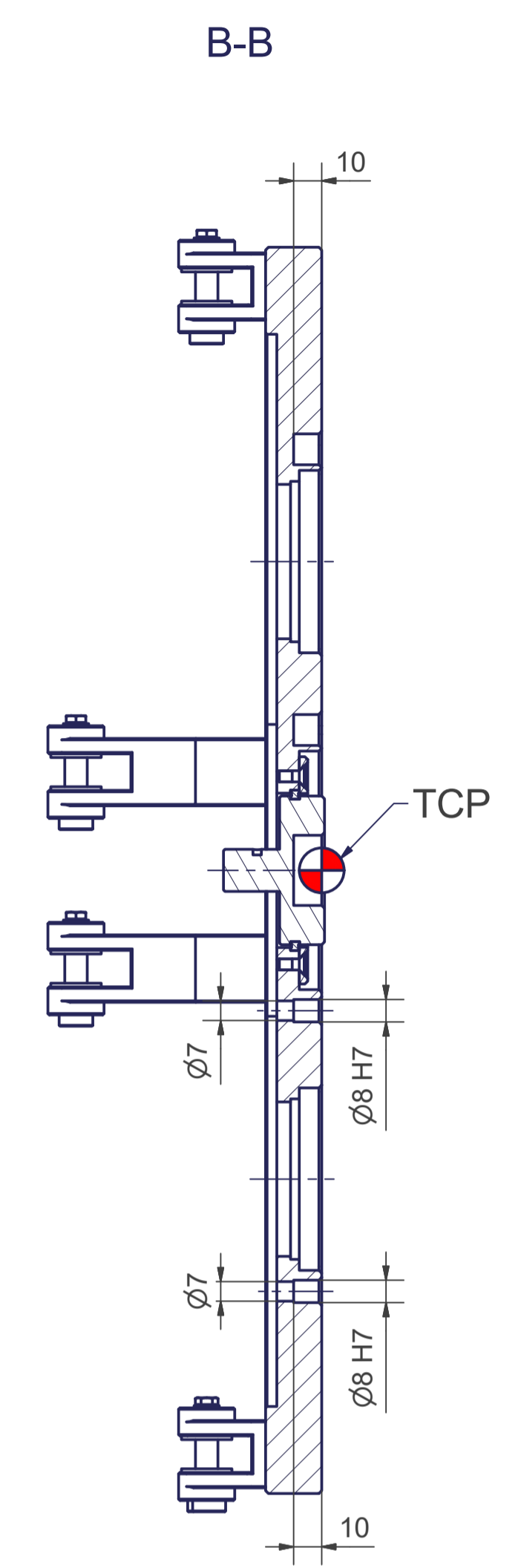
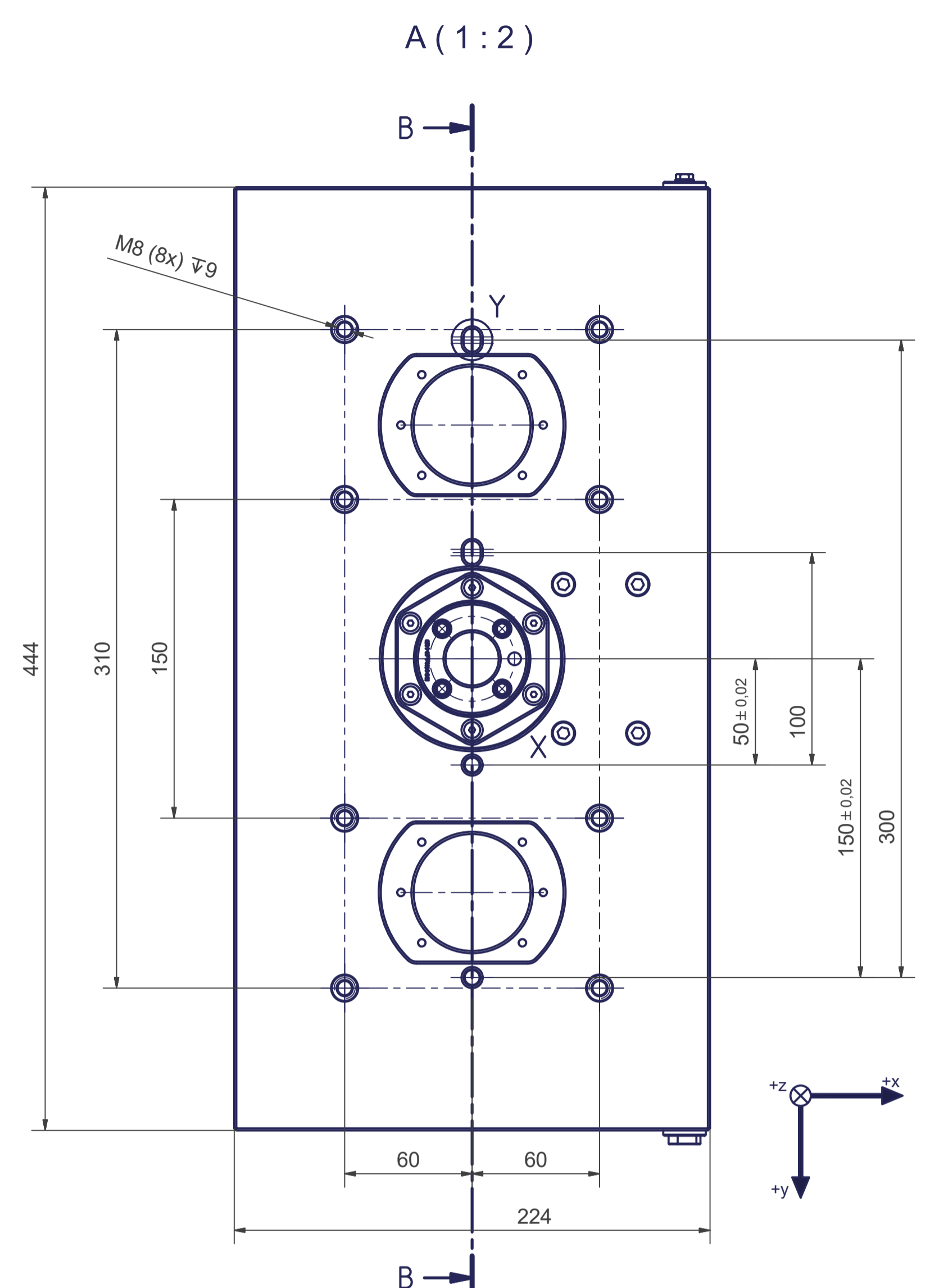
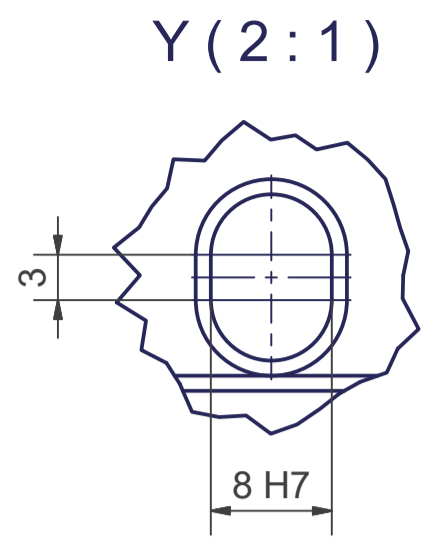
M6 (8x), 19 mm deep (one thread hole on each clamp, position see 3D model)

M6 (6x), 19 mm deep (one thread hole on each clamp, position see 3D model)

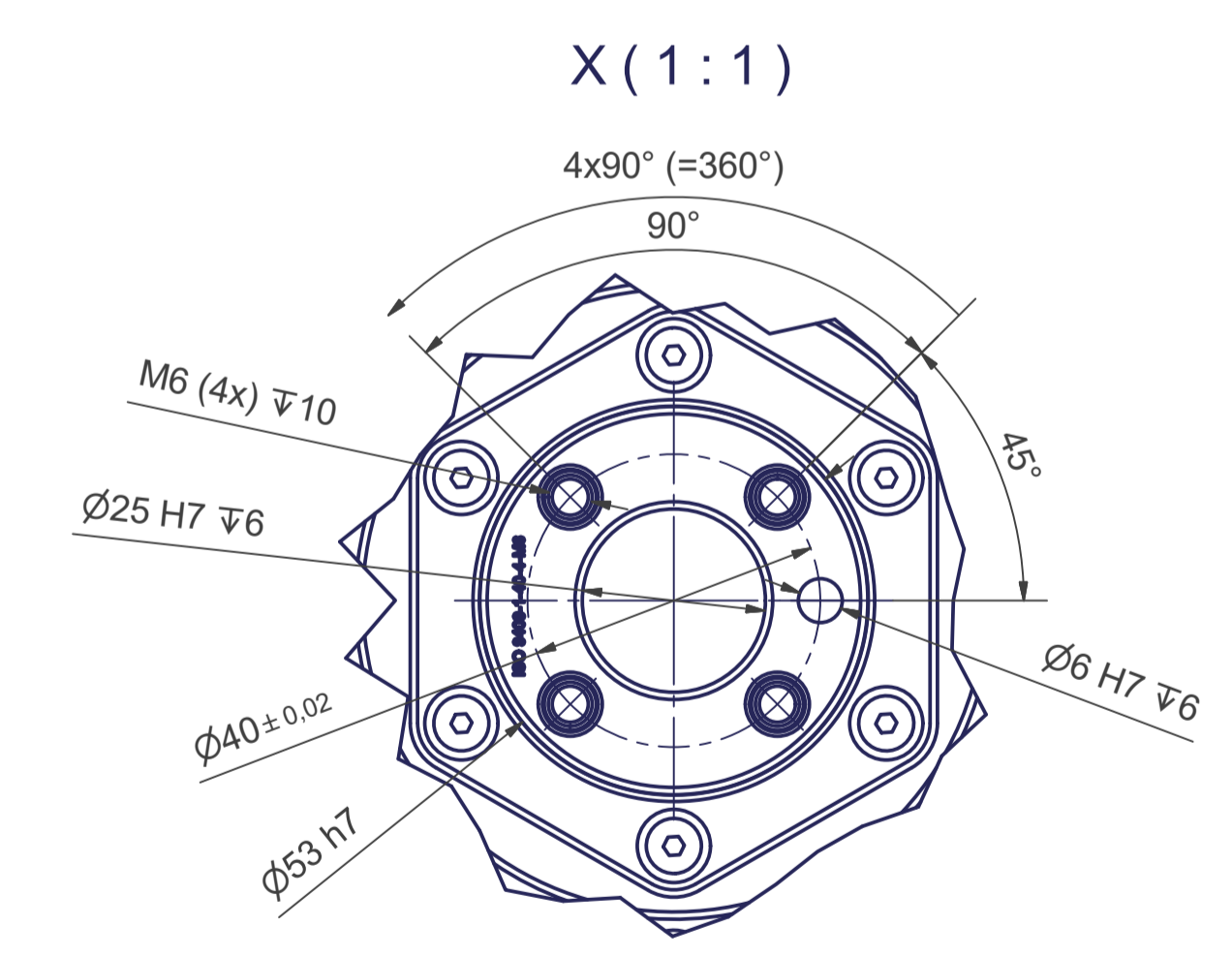
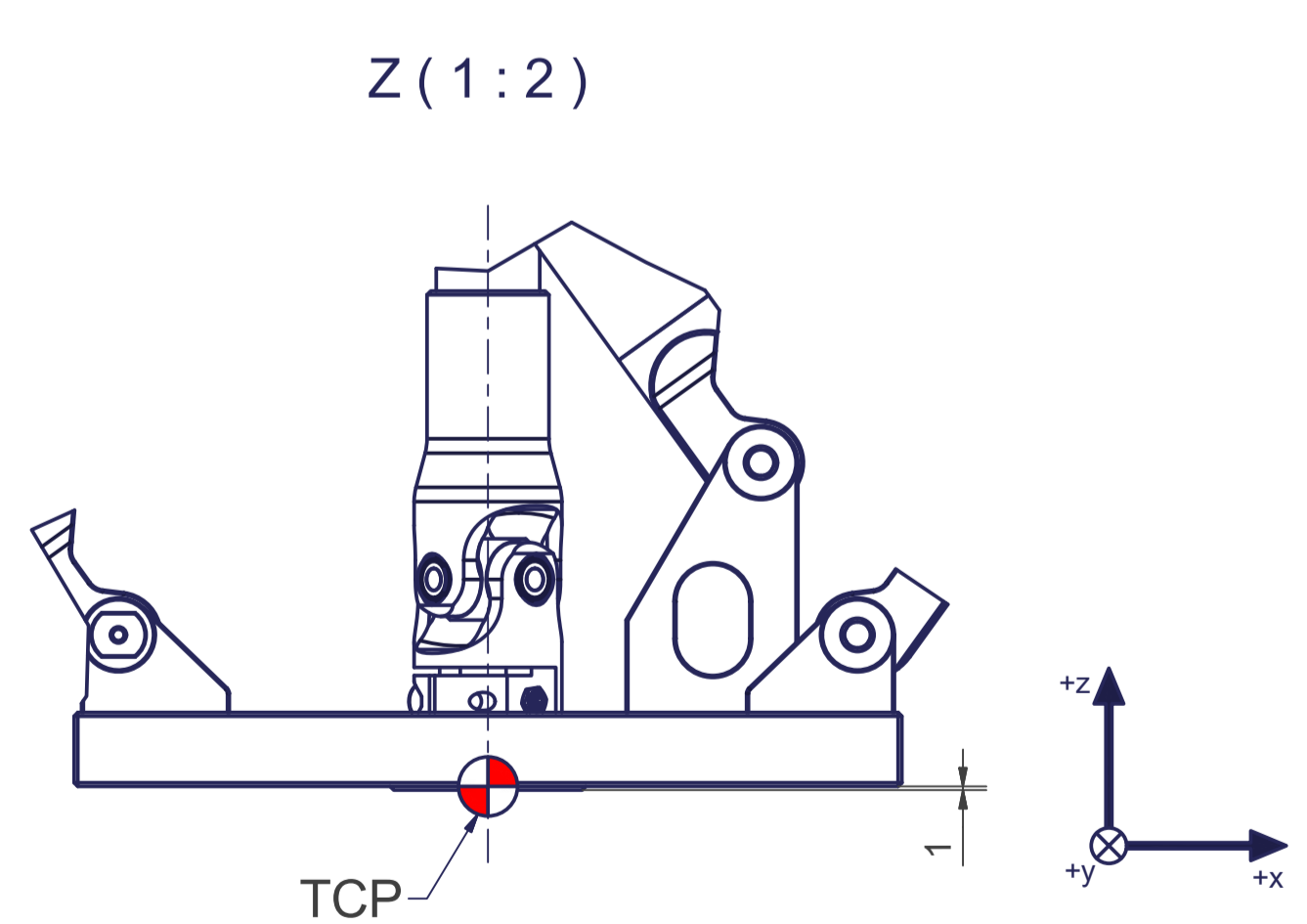
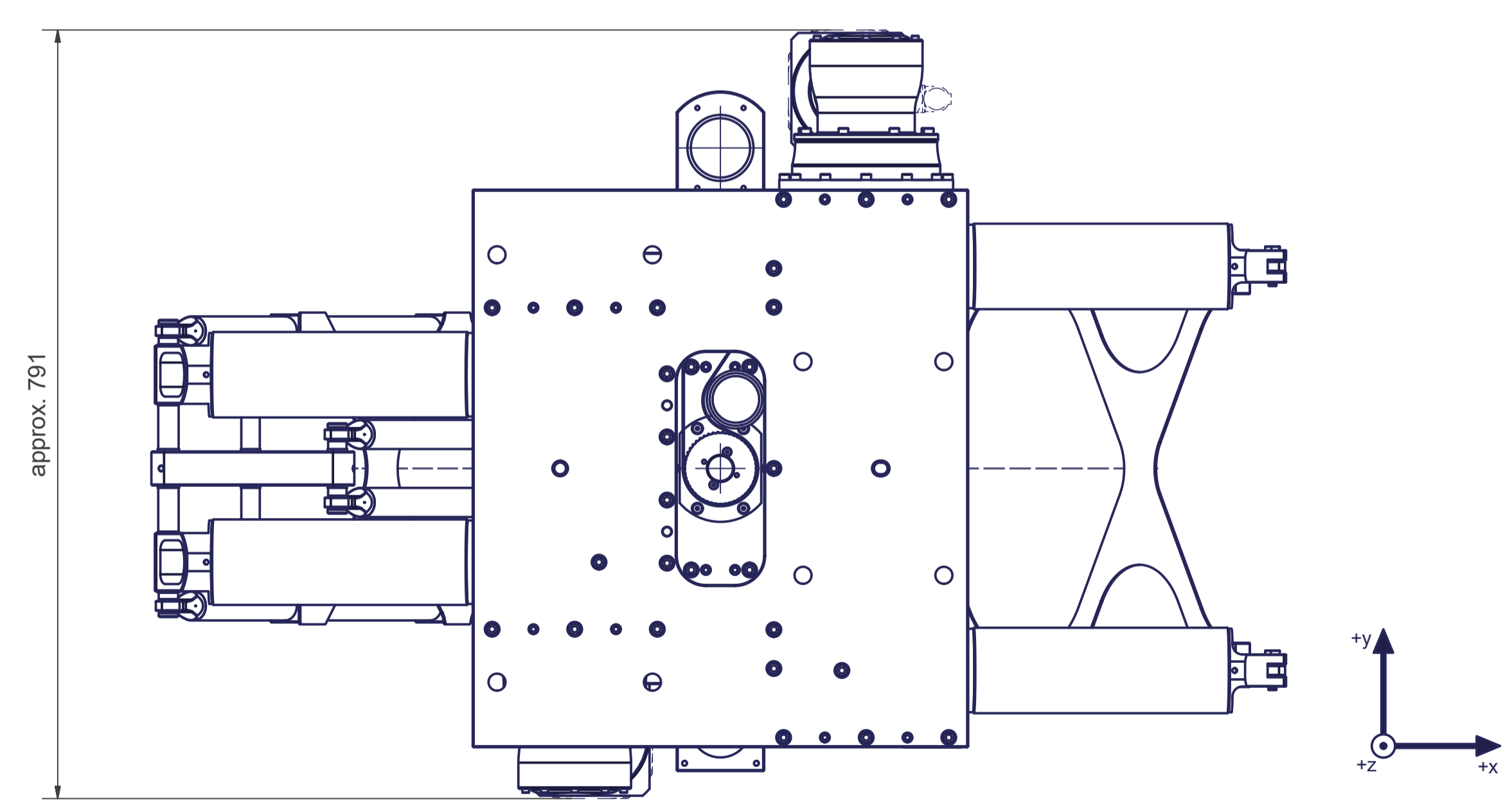
TCP - working range

Z

A



Tool Center Point
TCP (on the plane of the flange)

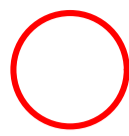
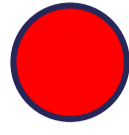


Connecting dimensions,
valid for article number A_00095.01-T1

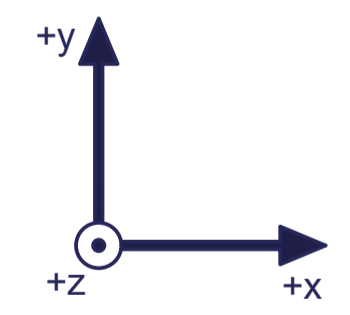
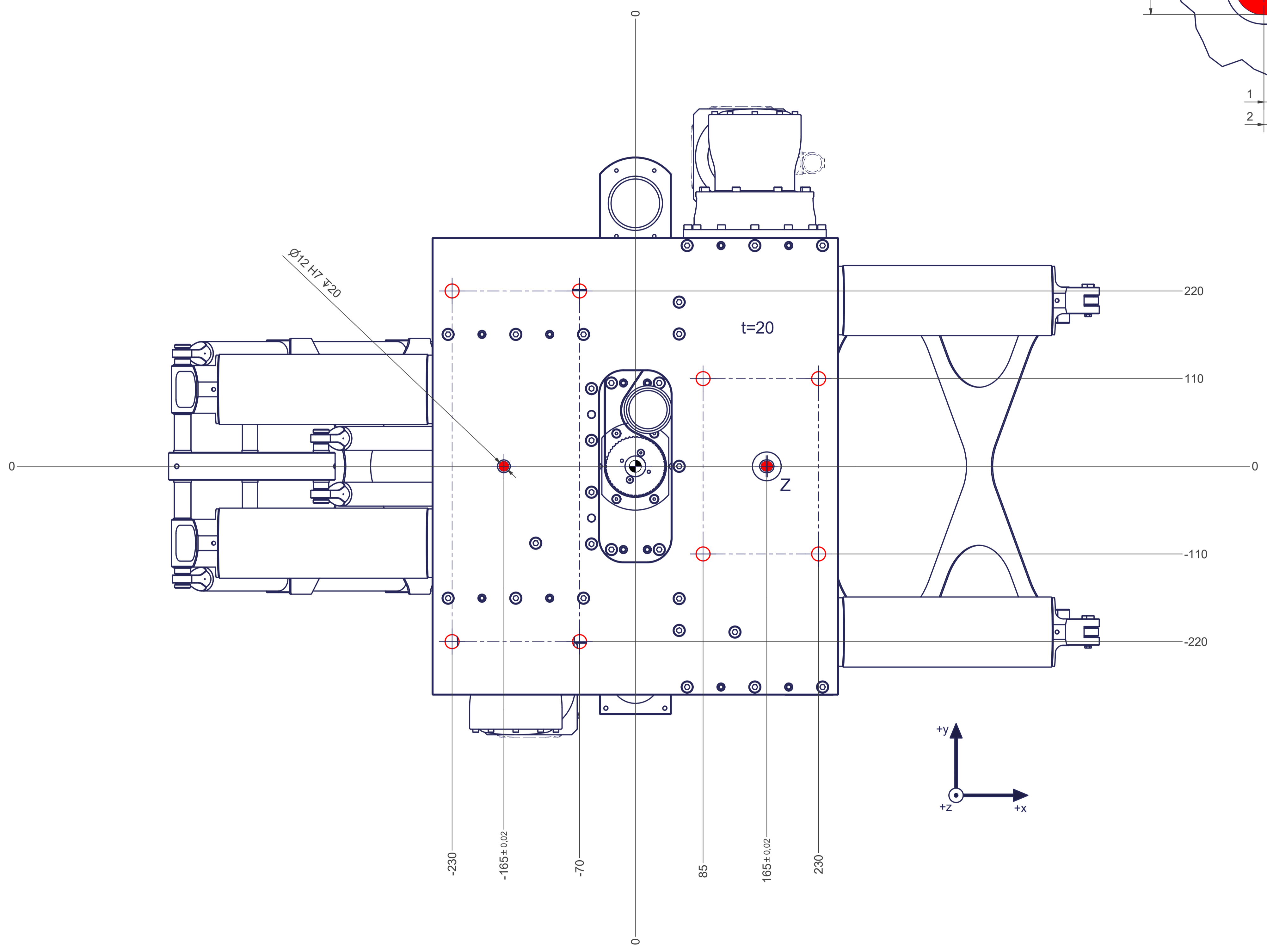
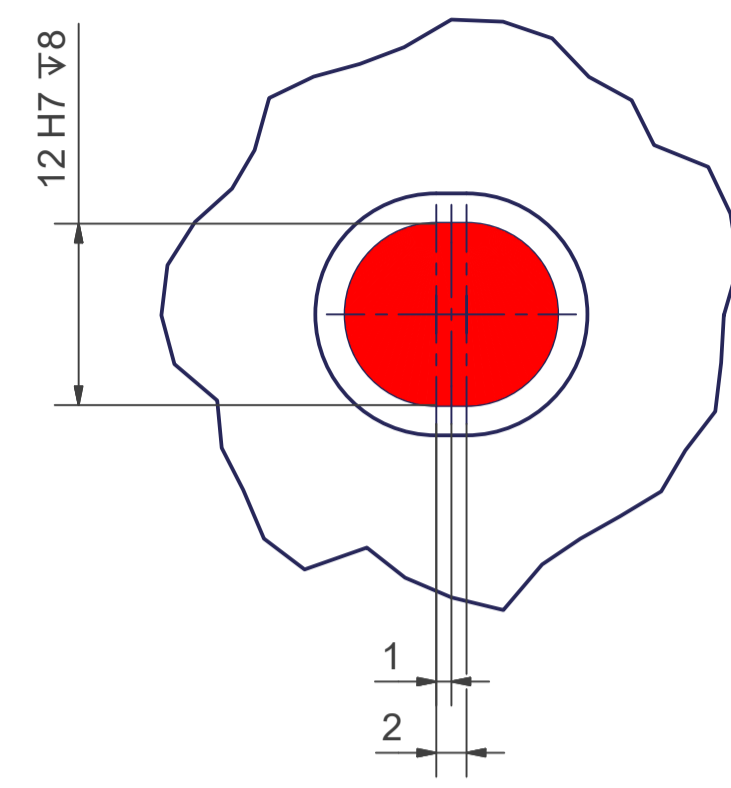
m= kg	A	p= bar
proj. storage surface = m²		∇= l/min
First angle projection	P= kW	
	U= V / Hz / Ph	
	Imax= A	



12 11 10 9 8 7 6 5 4 3 2 1

-  All fastening holes $\varnothing 17,5$ mm for screws M16 (DIN ISO 4014/4017 -8.8) without washers. Fastening holes are coloured red.
-  Drilling holes for locating pins are filled red. Recommend dimensions of locating pins: $\varnothing 12$ h6

Z (2:1)



12 11 10 9 8 7 6 5 4 3 2 1