

Connecting dimensions, valid for article number A_00917

m= kg	A	p= bar
proj. storage surface = m²		\dot{V} = l/min
First angle projection	P= kW	
	U= V / Hz / Ph	
	I _{max} = A	

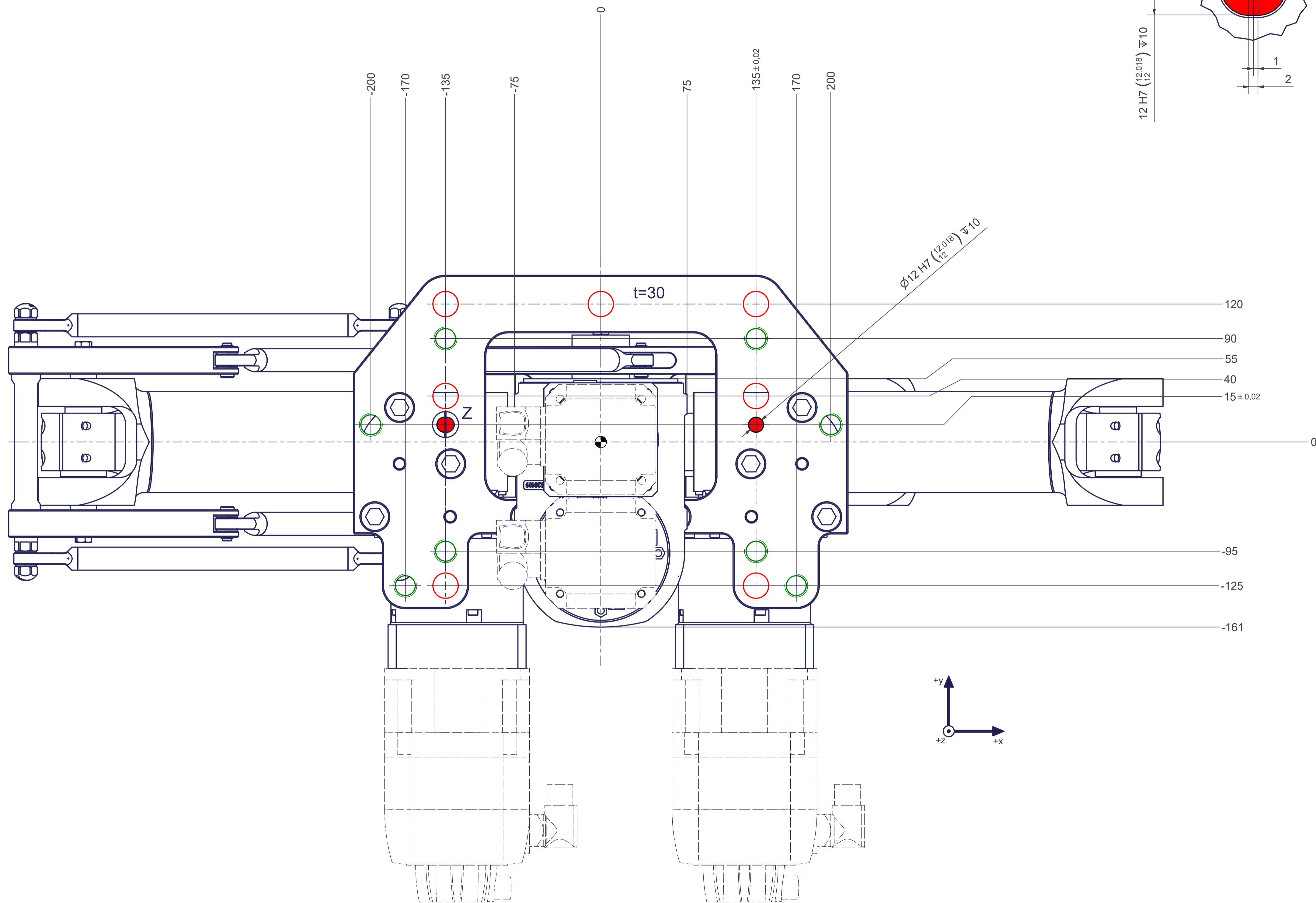
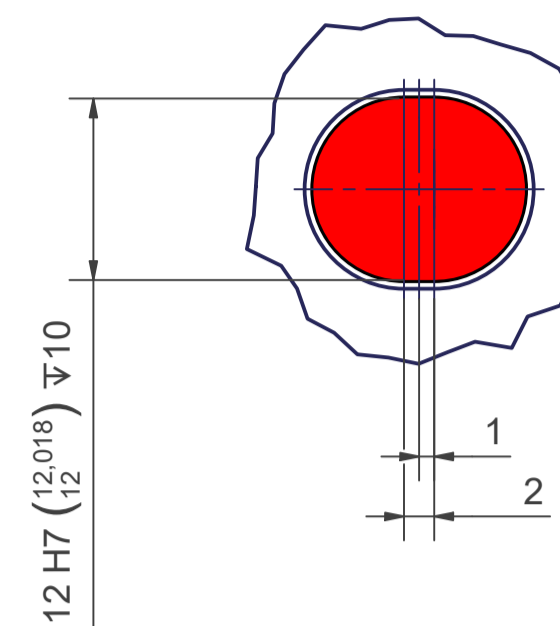
12 11 10 9 8 7 6 5 4 3 2 1

○ All fastening holes Ø22 mm for screws M20 (DIN ISO 4014/4017 -8.8) without washer. Fastening holes are coloured red.

● Drilling holes for locating pins are filled red. Recommended dimensions of locating pins: Ø12 h6 ($_{11,989}^{12}$)

○ Thread holes for screws M20 are coloured green. The tightening torque for these screws (strenght class 8.8) is 170 Nm.

Z (2:1)



12 11 10 9 8 7 6 5 4 3 2 1