

Depending on the drive type

Maximum deflection of the upper arm

Z (1:2)

A (1:1)

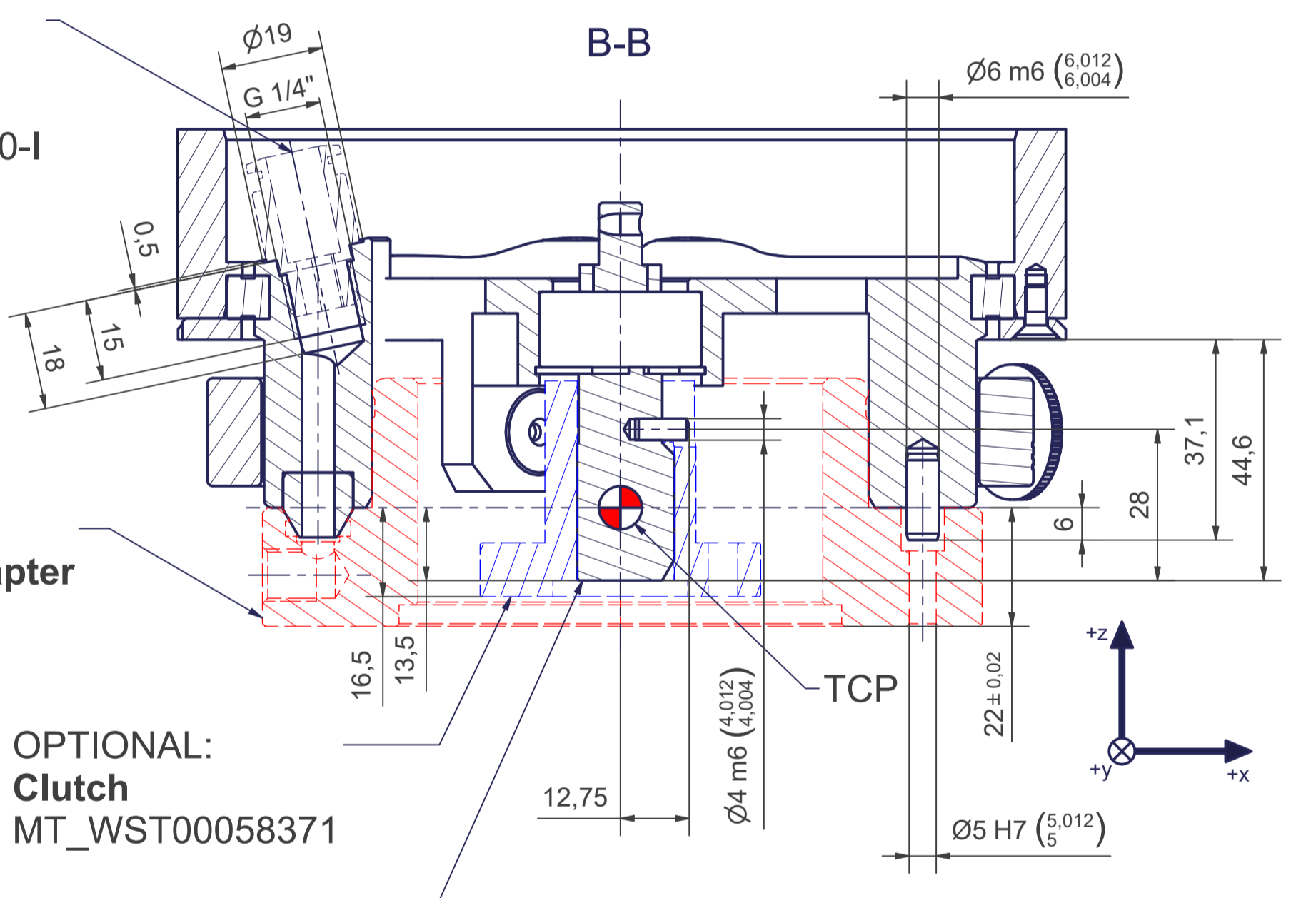
Flange diagram - according to **Tool-side change-adapter** MT_BGR00018996

Robot-side change-head

OPTIONAL: **Tool-side change-adapter** MT_BGR00018996

The mark "A" and "B" of the **Tool-side change-adapter** must fit with the mark "A" and "B" on the **Roboter-side change-head**.

Fitting - (not included) for example: Festo, Push-in fitting Product name: QS-1/4-10-I Part number: 153018

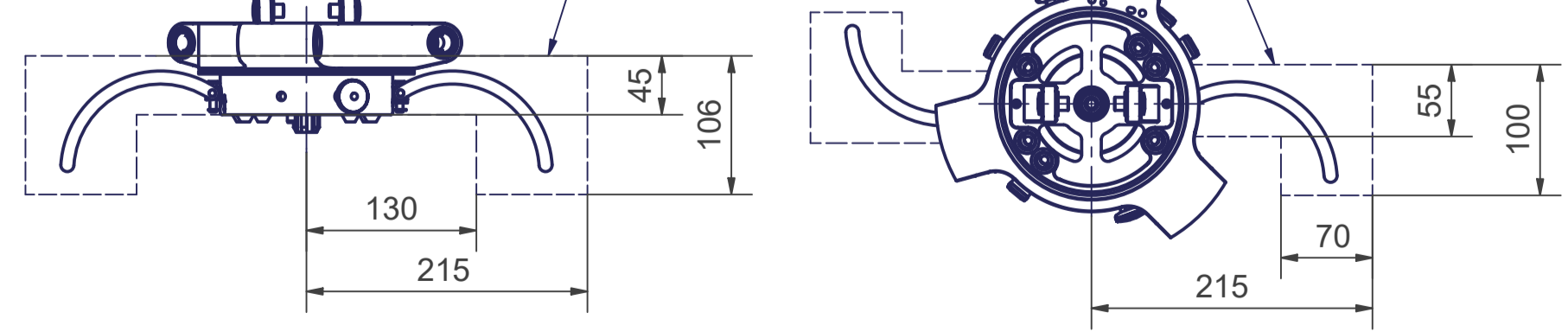


OPTIONAL: **Clutch** MT_WST00058371

Y (2:1)

Splined Shaft - Similar to DIN ISO 14 - KW 16 x 20 according to **Clutch** (MT_WST00058371)

Interference contour for opening and closing the **Robot-side change-head**



OPTIONAL:

Tool-side change-adapter MT_BGR00018996

Clutch MT_WST00058371

m= kg	A	p= bar
proj. storage surface = m²		v= l/min
First angle projection	P= kW	
	U= V / Hz / Ph	
	Imax= A	

Connecting dimensions, valid for article number A_00052-03-TS1-ATS

12

11

10

9

8

7

6


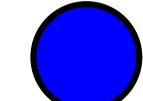
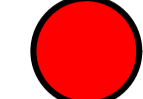
5

4

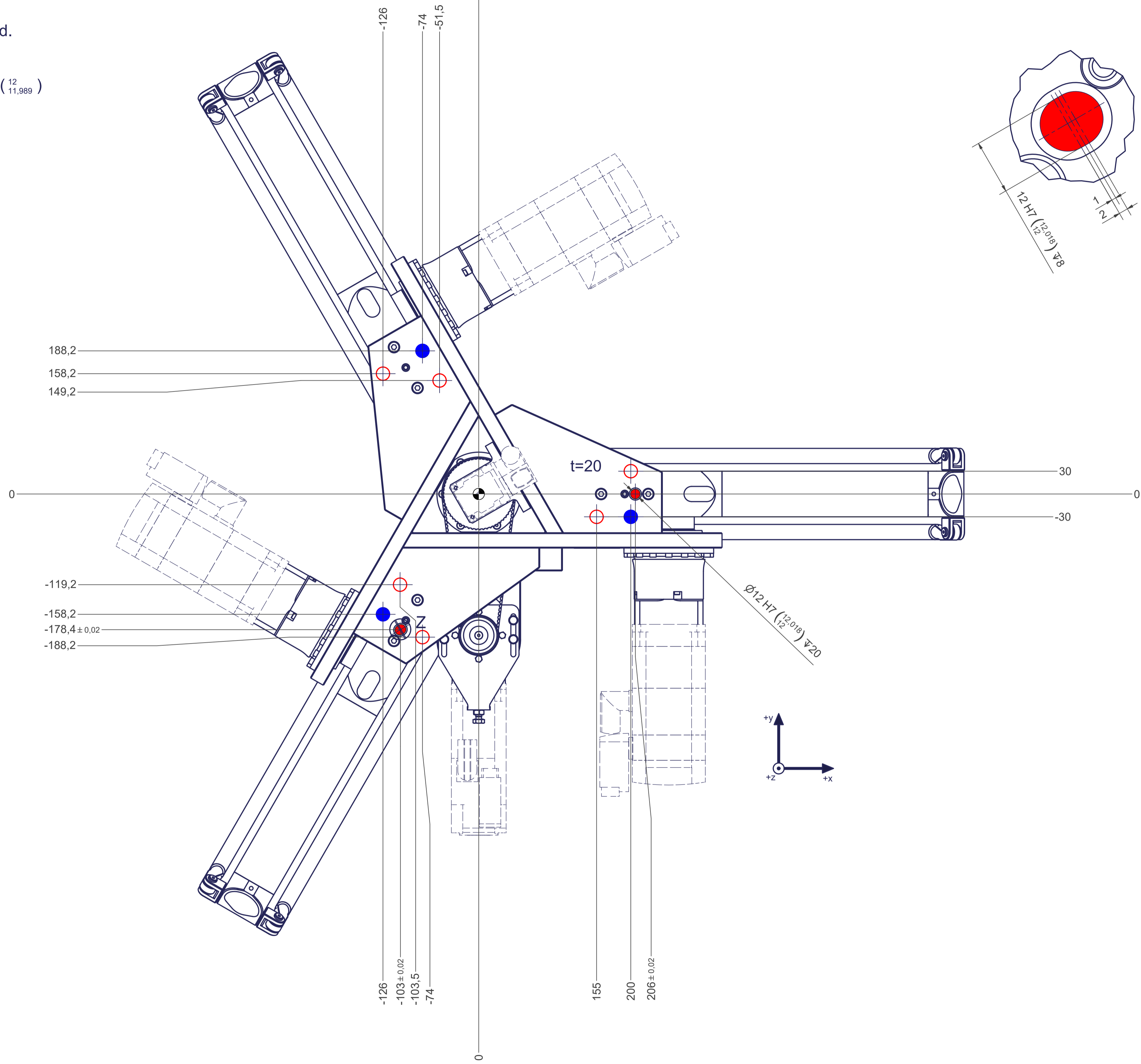
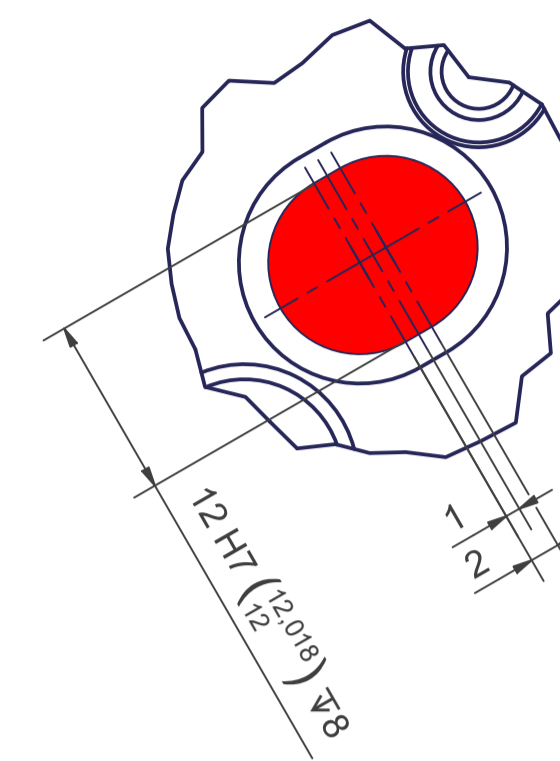
3

2

1

-  All fastening holes $\varnothing 17,5$ mm for screws M16 (DIN ISO 4014/4017 -8.8) without washers. Fastening holes are coloured red.
-  Fastening holes filled blue are difficult to access. We recommend using fastening holes coloured red.
-  Drilling holes for locating pins are filled red. Recommend dimensions of locating pins: $\varnothing 12$ h6 ($\begin{smallmatrix} 12 \\ 11,989 \end{smallmatrix}$)

Z (2:1)



12

11

10

9

8

7

6

5

4

3

2

1