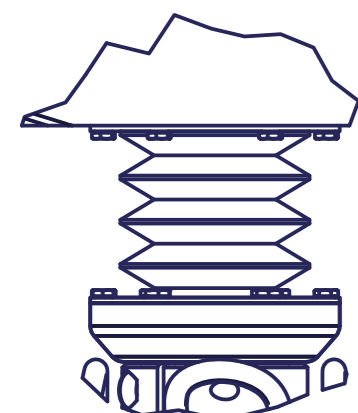
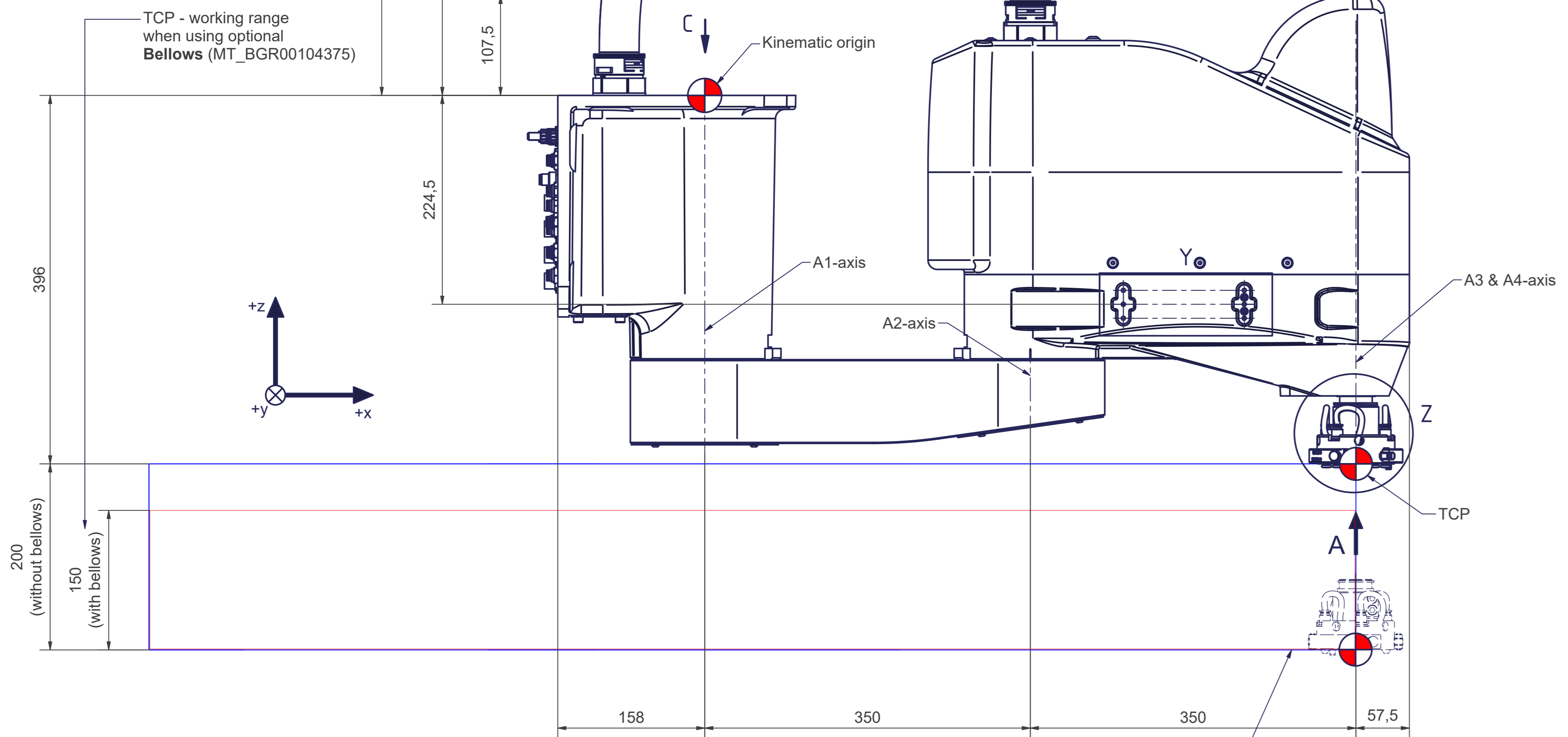


Optional Bellows (1:2)

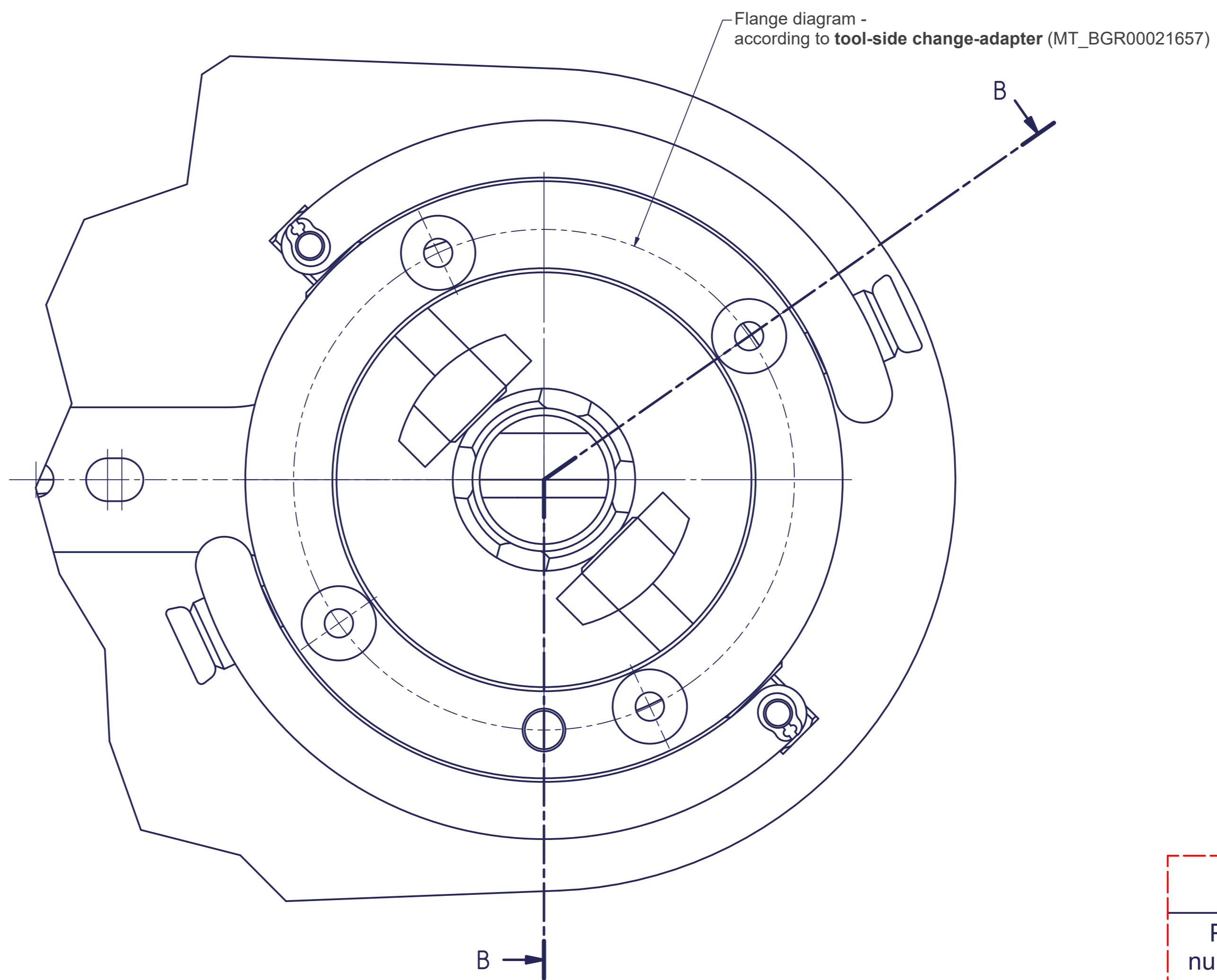


TCP - working range when using optional Bellows (MT_BGR00104375)

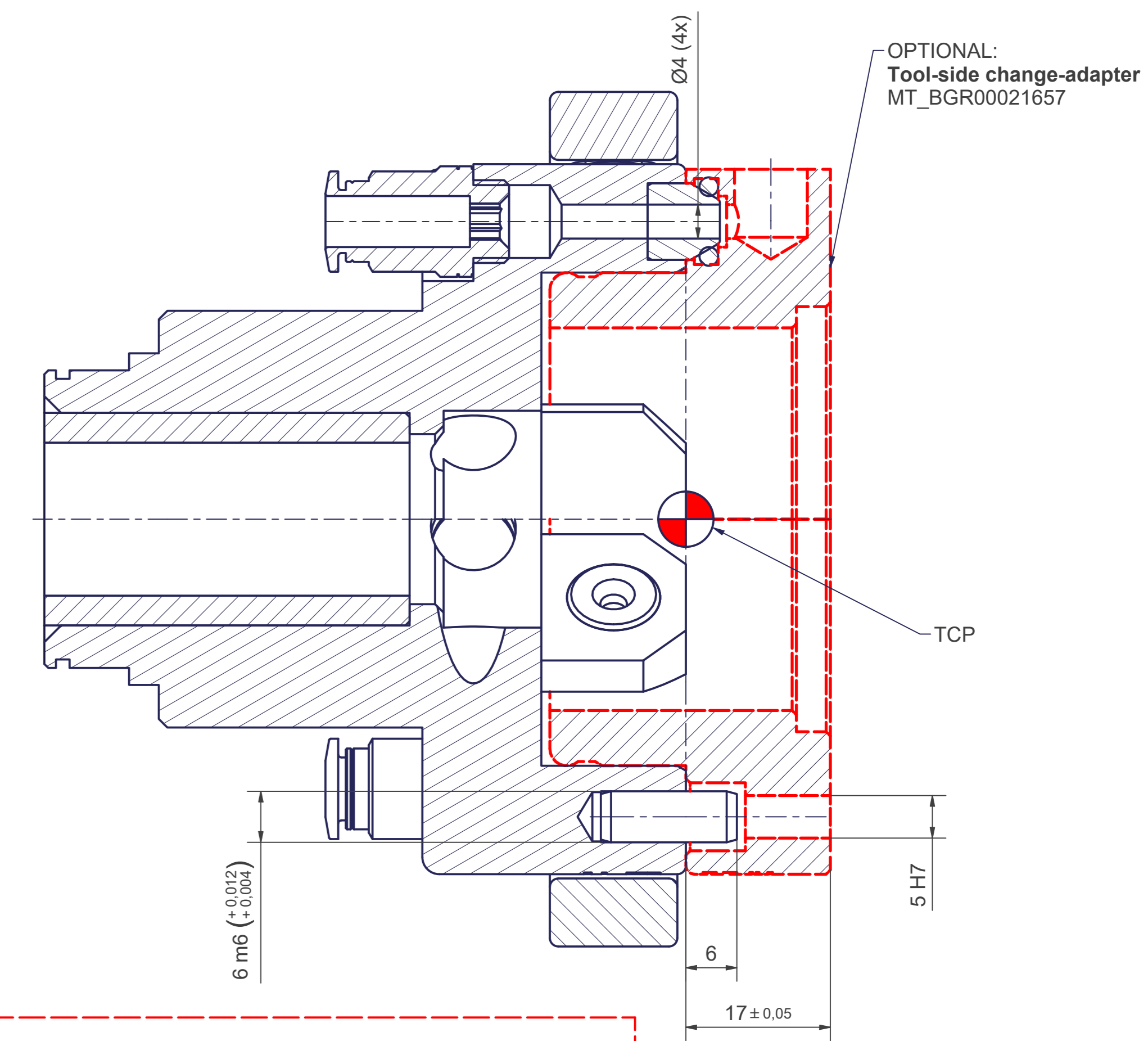


A minimum distance of 100mm between the cable harness and any (machine) parts is recommended to avoid any collision

A (2:1)
Tool mounting flange

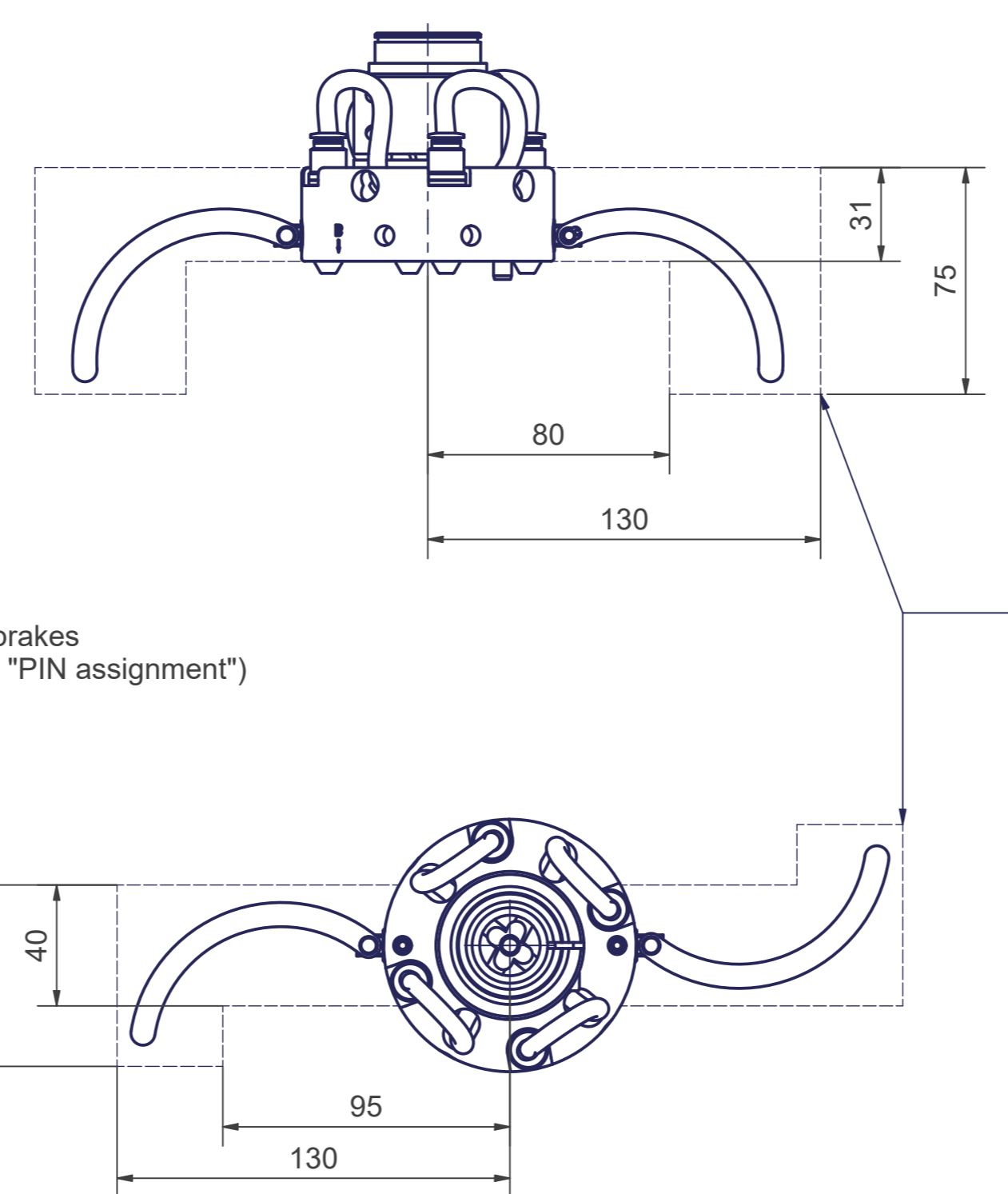
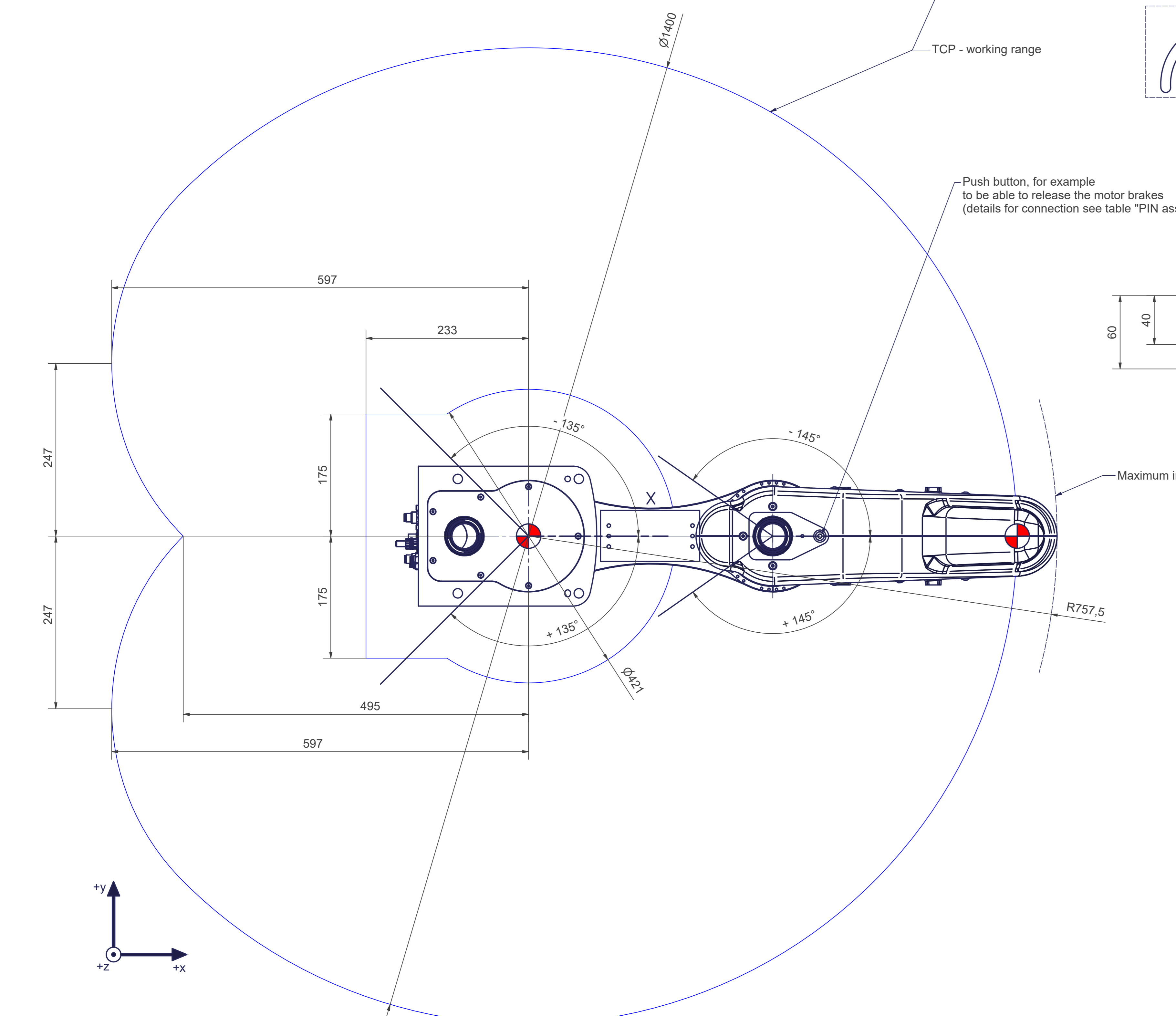


B-B

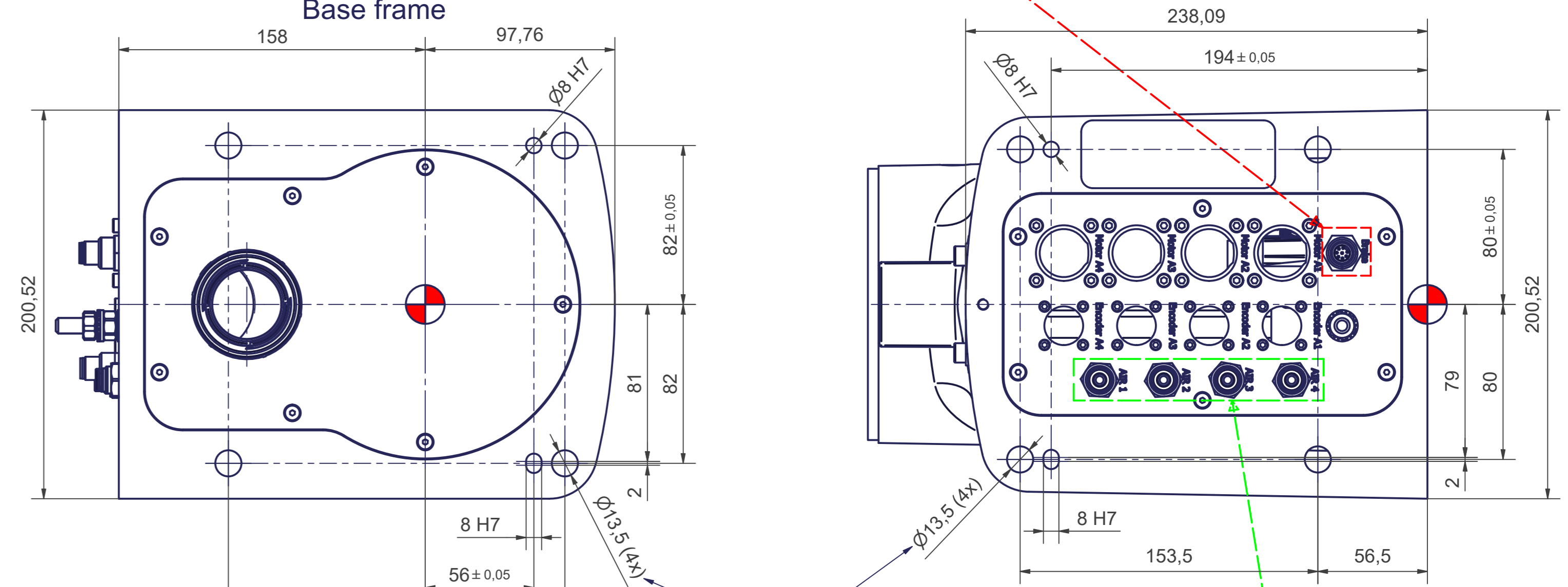


PIN assignment by autonox Robotics

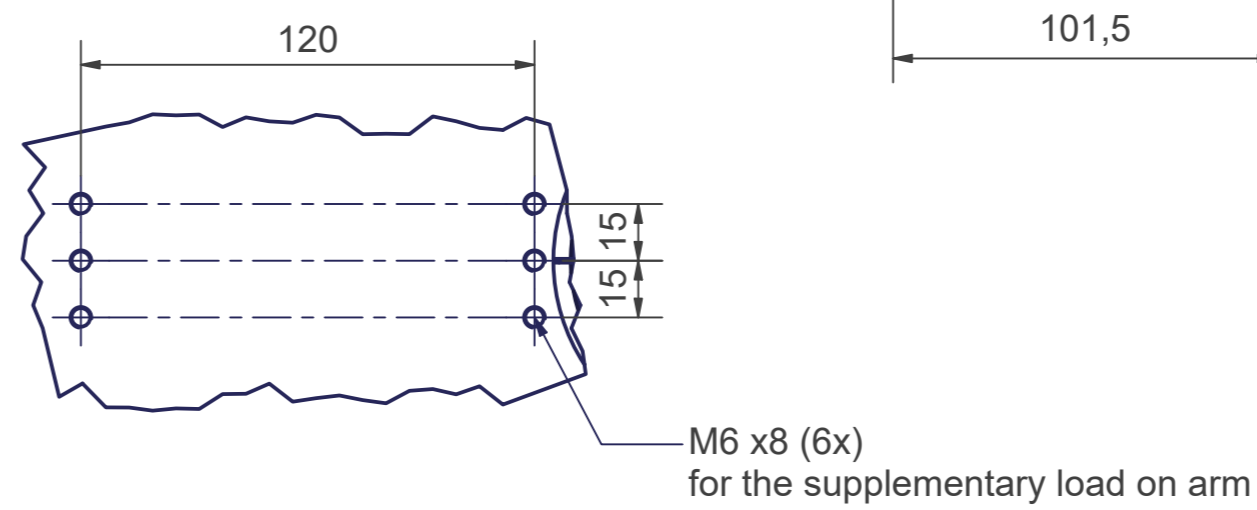
PIN number	Connection to	M12 8-pin male
1	Push button	
2	Push button	
3 to 8	Not connected	



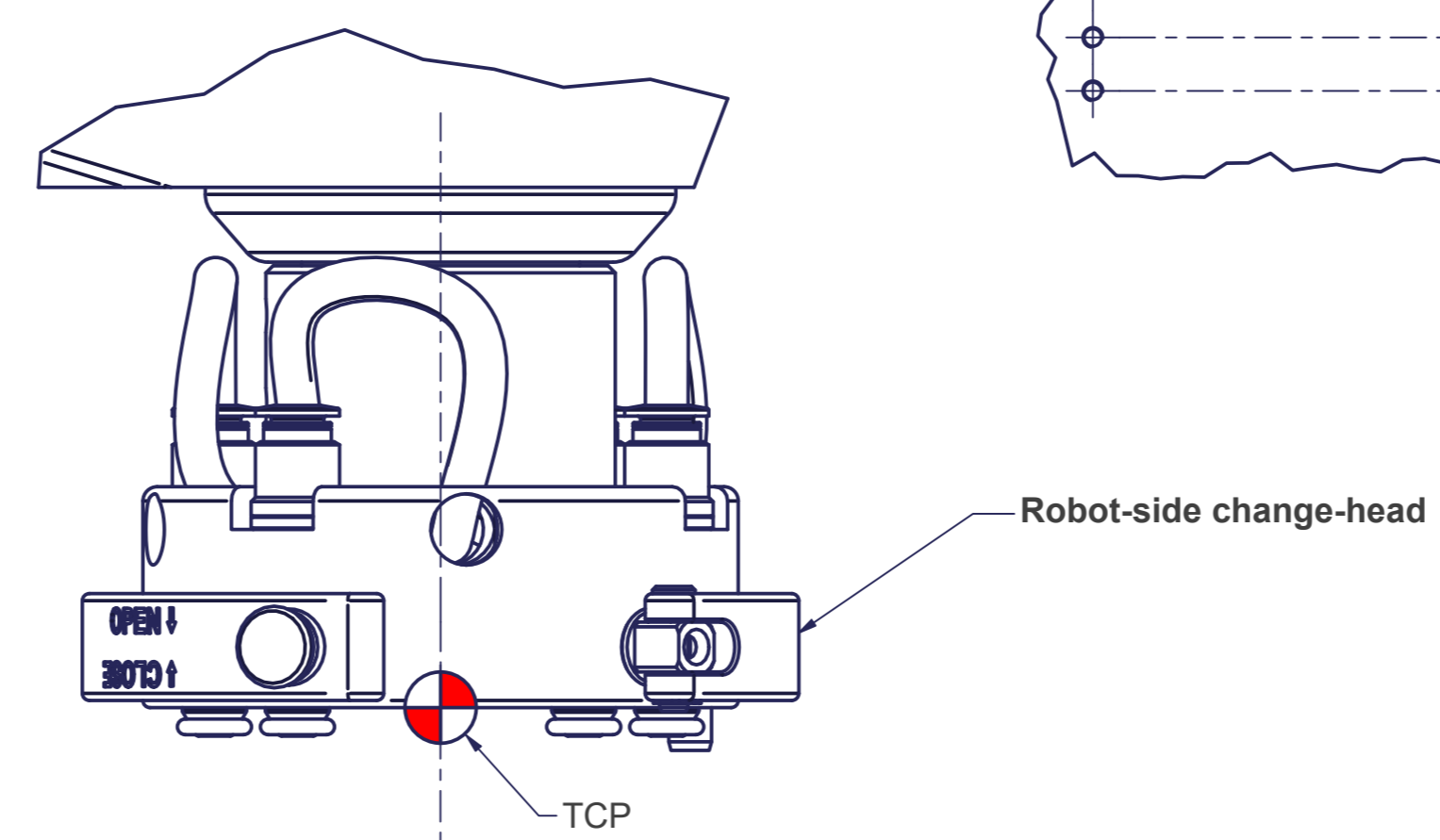
C (1:2)
Base frame



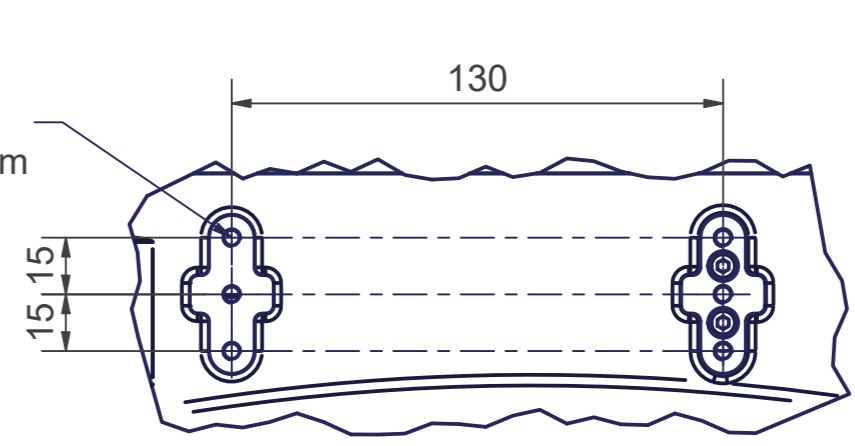
X (1:2)



Z (1:1)



Y (1:2)



sCara4-700-6kg		Motion	
Axes	4	Axes	Range fully usable
Payload (on TCP)	6 kg	A1	± 135°
Reach	700 mm	A2	± 145°
Mounting position	Floor, ceiling, wall	A3	- 396 mm / - 596 mm
		A4	± 360°

Incl. fourfold integrated media supply to the end effector (compressed air 6 bar / vacuum -850 mbar / D = 6mm d = 4mm)

Connecting dimensions, valid for article number: AT_00020-01-ATS

kg	kg	A	bar
m ⁻	kg	A	l/min
proj. storage surface =	m ²	P _z	mm
		U _z	mm
		l _{max}	mm
		kw	mm
		V / Hz / Ph	mm

OPTIONAL:
Tool-side change-adapter MT_BGR00021657

Bellows MT_BGR00104375