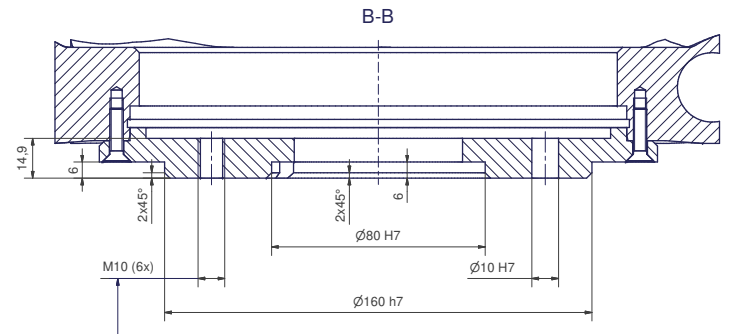
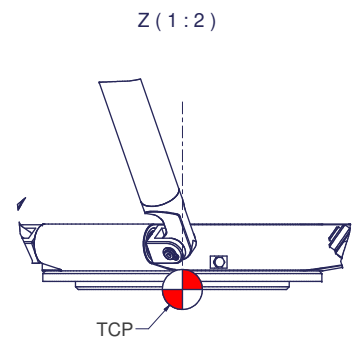
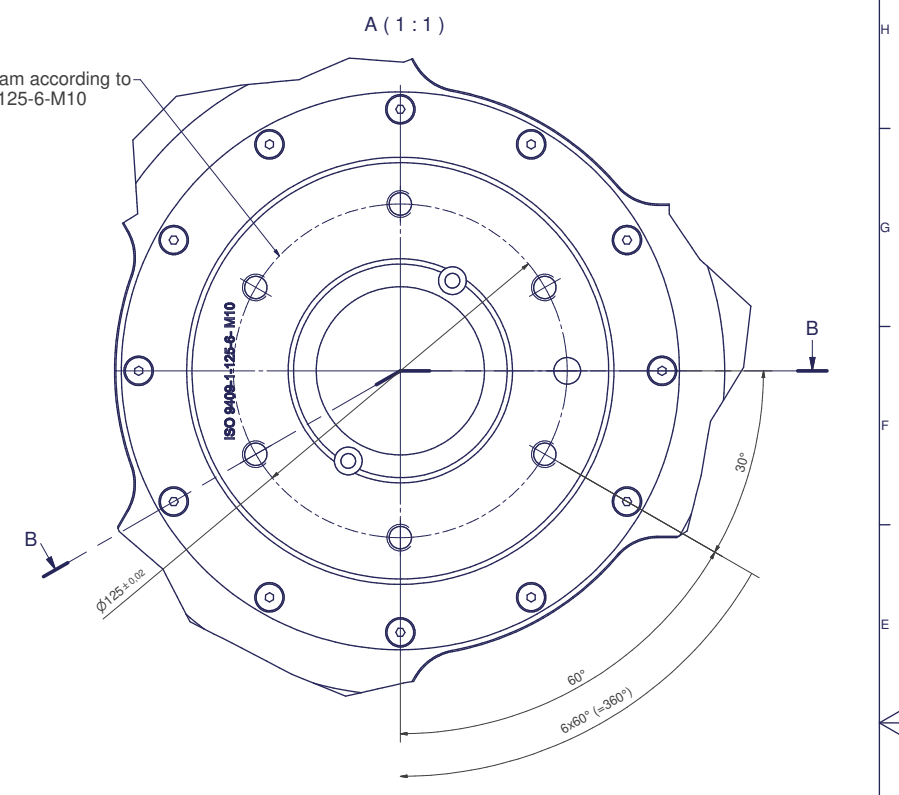


Flange diagram according to ISO 9409-1-125-6-M10



Screws strength class 8.8
Fasten with max. 40 Nm
Do not use bonding agent

m= kg	A	\bar{p} bar
proj. storage surface = m ²	P= kW	\bar{v} l/min
U= V / Hz / Ph	I _{max} = A	

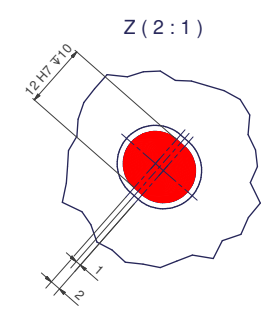
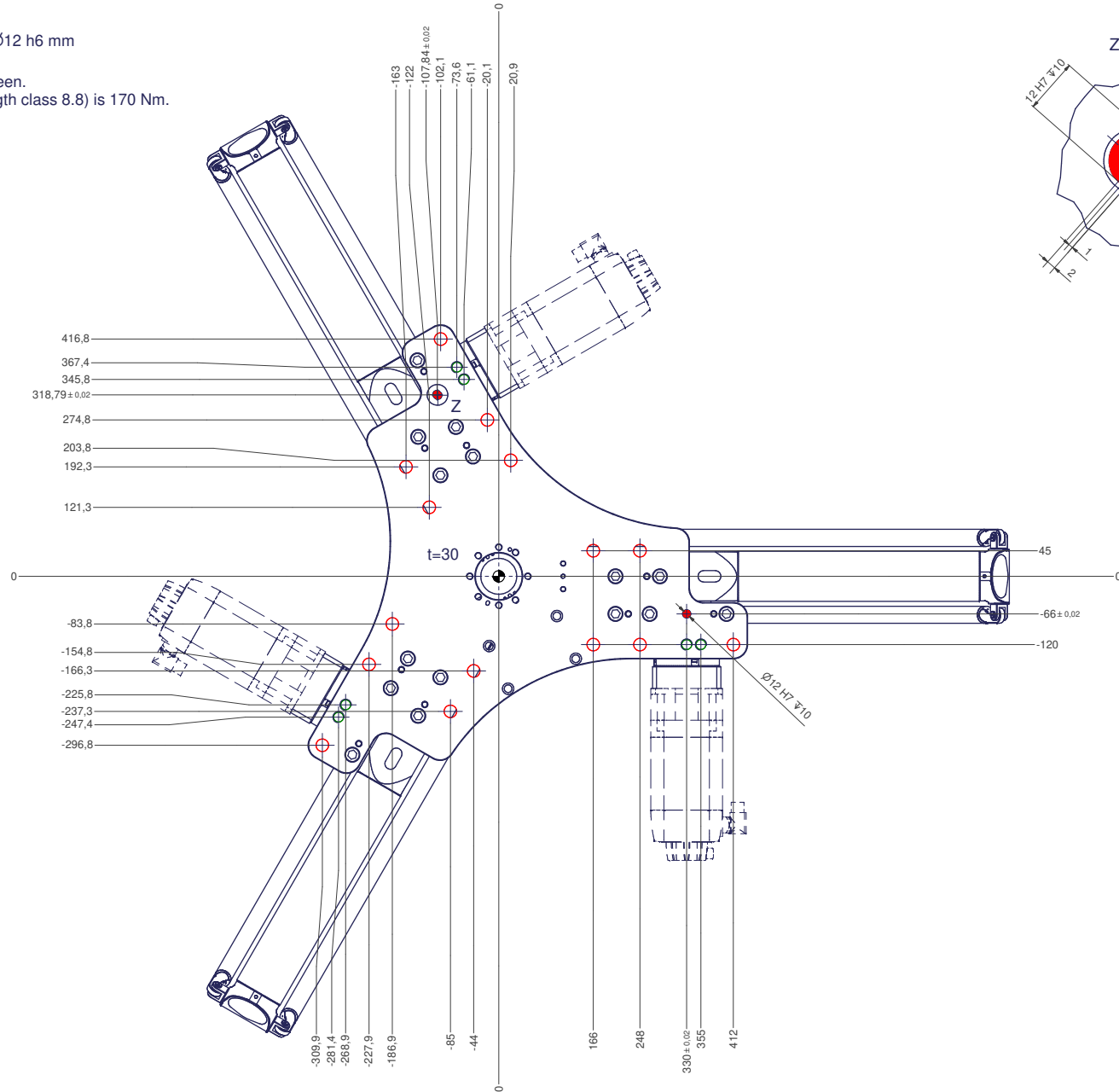
Connecting dimensions, valid for article number A_00066-01

12 11 10 9 8 7 6 5 4 3 2 1

○ All fastening holes Ø22mm for screws M20 (DIN ISO 4014/4017 -8.8) without washer.
Fastening holes are coloured red.
The tightening torque for these screws (strength class 8.8) is 360 Nm. (in a steel frame)

● Drilling holes for locating pins are filled.
Recommended dimensions of locating pins: Ø12 h6 mm

○ Thread holes for screws M20 are coloured green.
The tightening torque for these screws (strength class 8.8) is 170 Nm.



12 11 10 9 8 7 6 5 4 3 2 1