

12

11

10

9

8

7

6

5

4

3

2

1

H

G

F

E

D

C

B

A

H

G

F

E

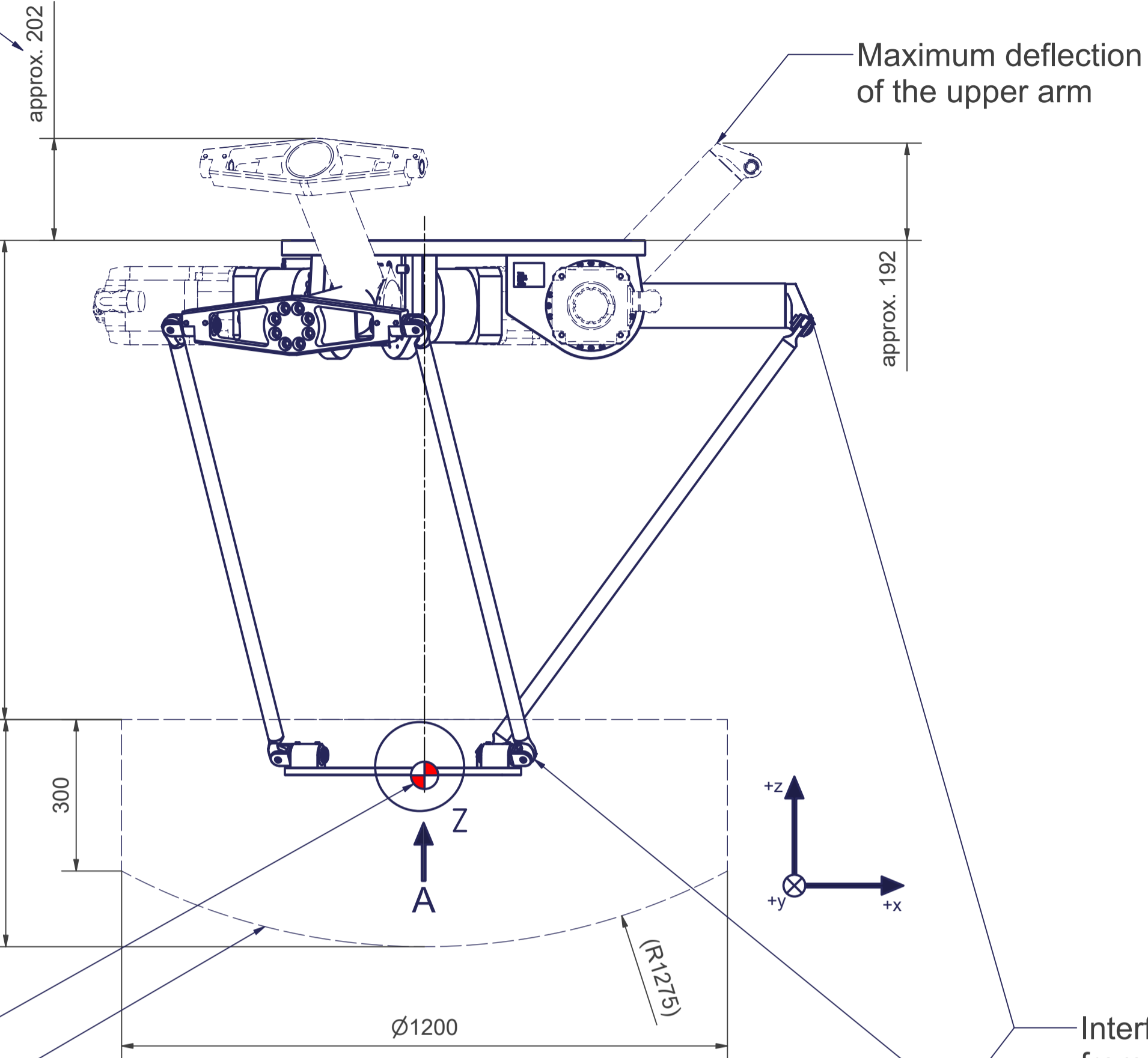
D

C

B

A

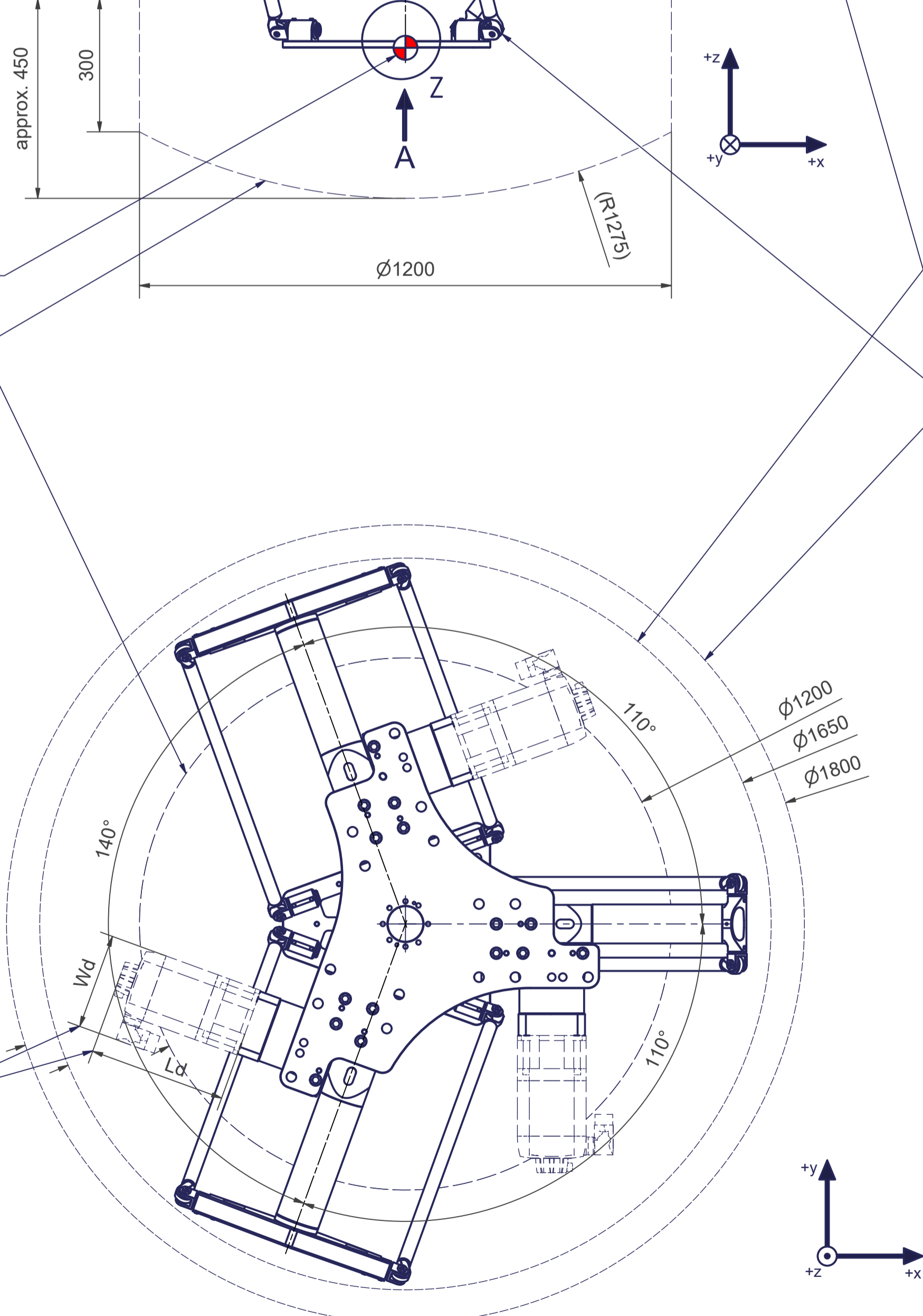
Maximum deflection of the upper arm



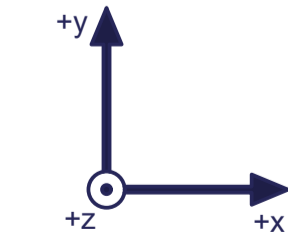
Tool Center Point  
TCP (on the plane of the flange)

TCP - working range

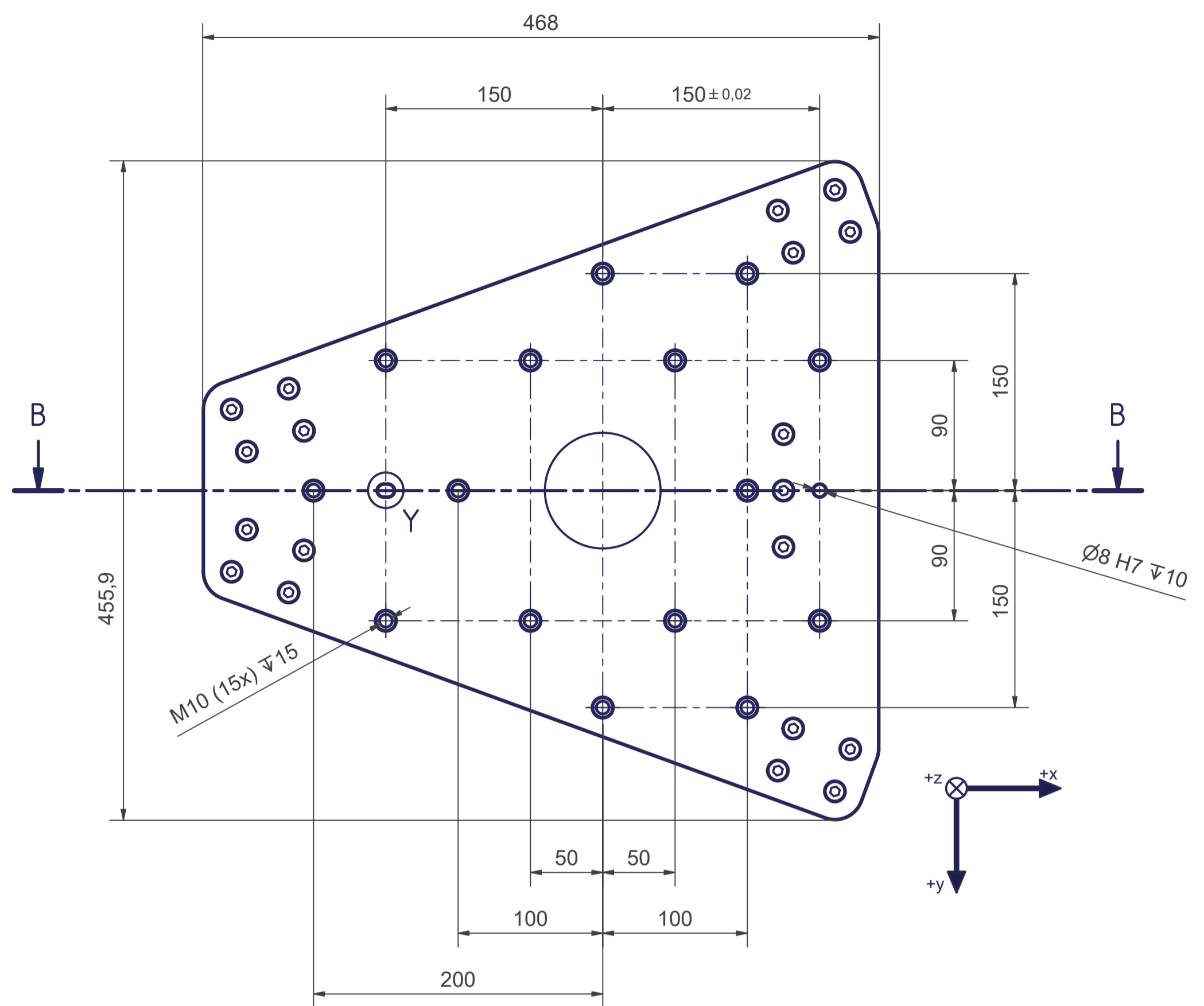
Depending on the motor type



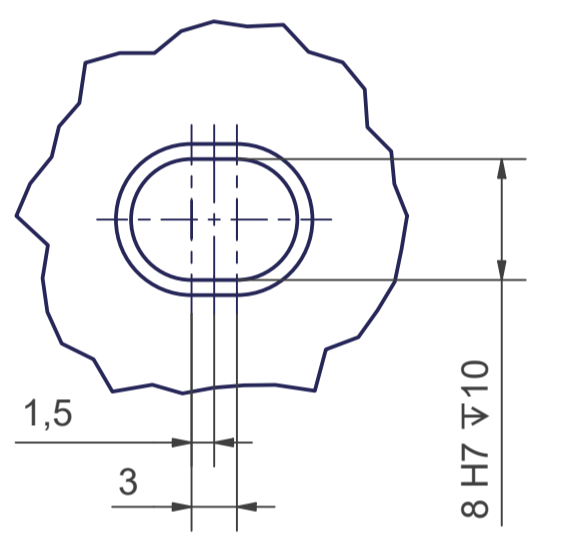
Rev\_00



A (1:3)



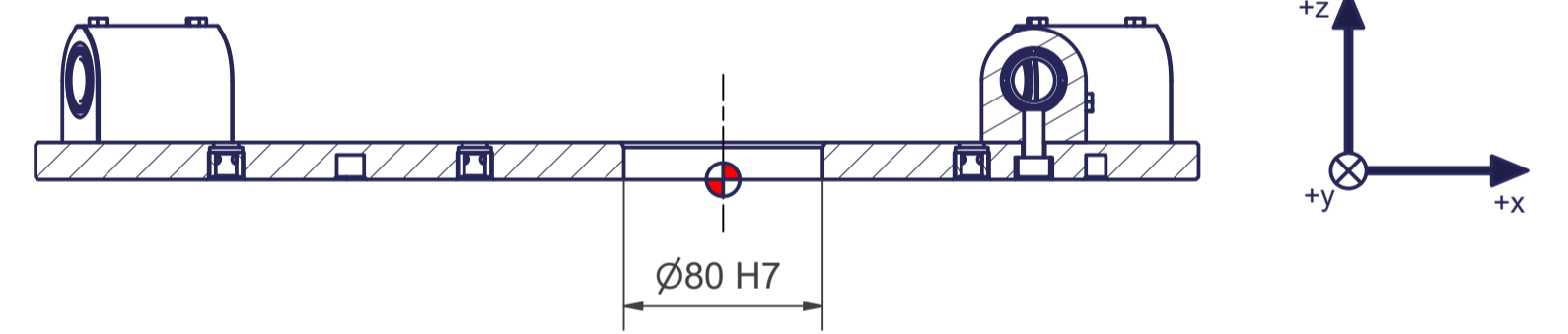
Y (2:1)



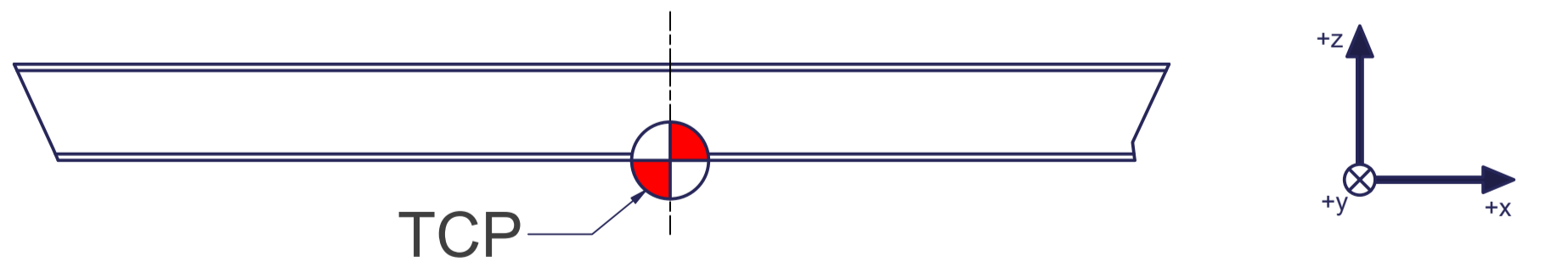
Interference contour from machine body

Maximum interference contour

B-B



Z (1:1)

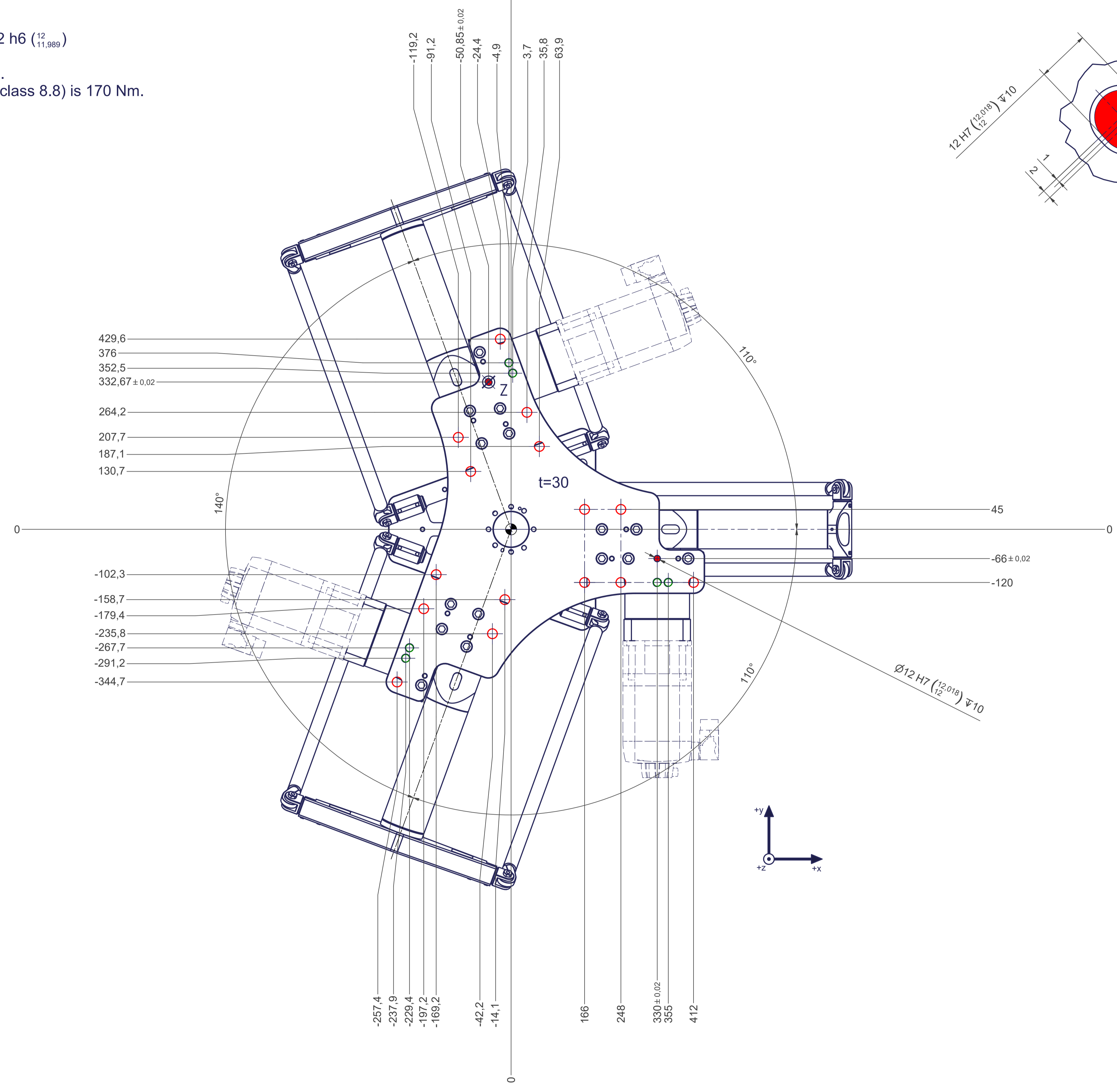
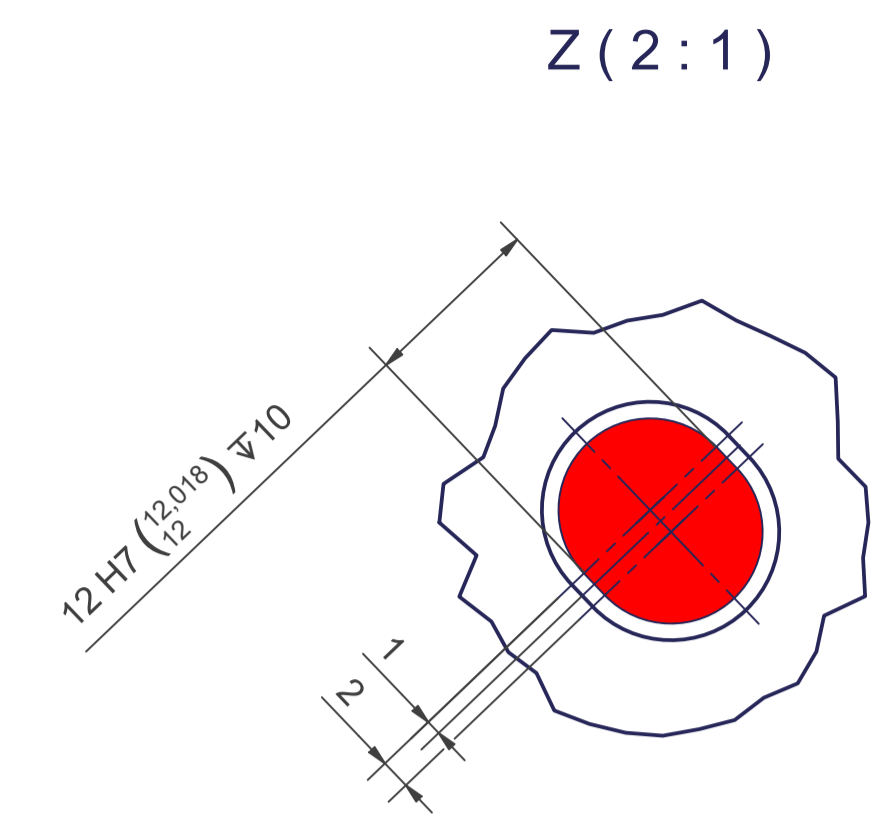


Connecting dimensions,  
valid for article number A\_00659

m= kg	A	p= bar
proj. storage surface = m²		ψ= l/min
First angle projection	P= kW	
	U= V / Hz / Ph	
	Imax= A	

12 11 10 9 8 7 6 5 4 3 2 1

- All fastening holes  $\varnothing 22$  mm for screws M20 (DIN ISO 4014/4017 -8.8) without washer. Fastening holes are coloured red.
- Drilling holes for locating pins are filled red. Recommended dimensions for locating pins:  $\varnothing 12$  h6 ( $\begin{smallmatrix} 12 \\ 11,989 \end{smallmatrix}$ )
- Thread holes for screws M20 are coloured green. The tightening torque for these screws (strength class 8.8) is 170 Nm.



12 11 10 9 8 7 6 5 4 3 2 1