

Depending on the drive type

Maximum interference contour for the electrical connector

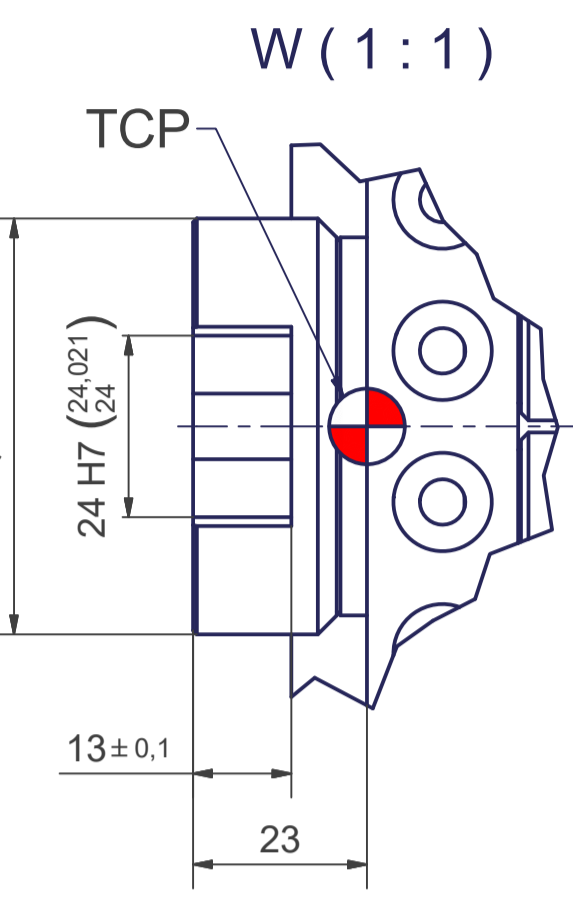
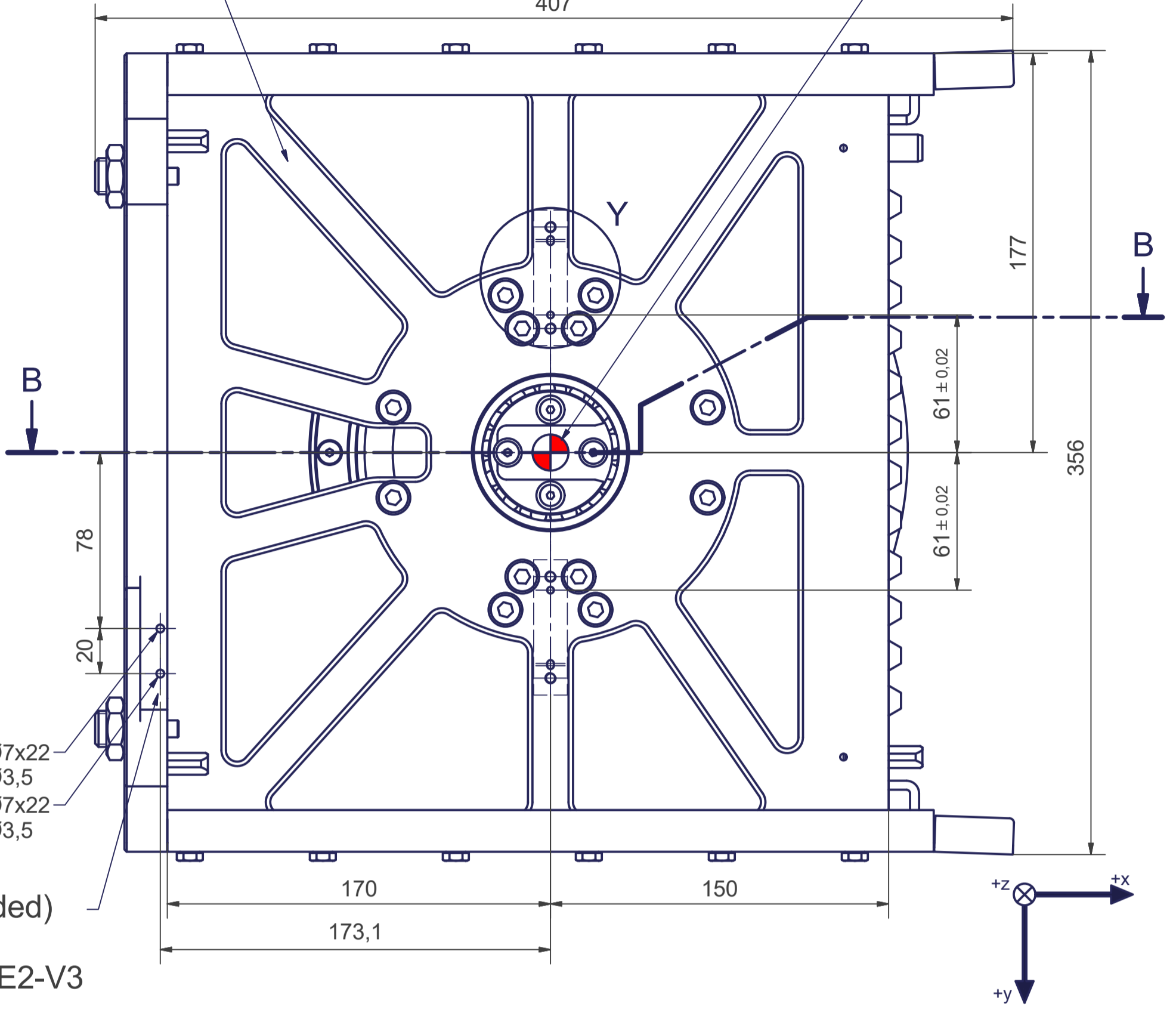
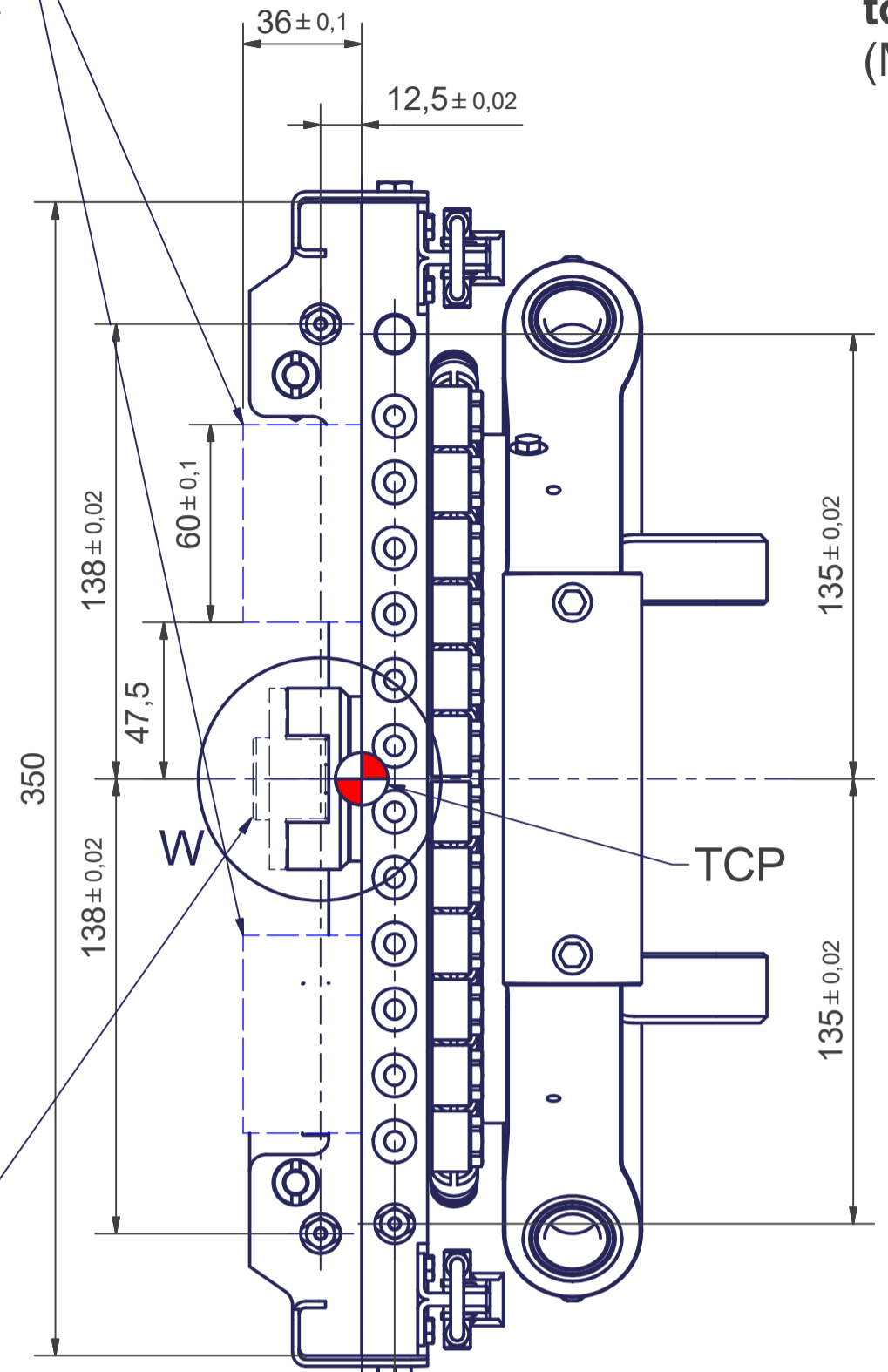
Flange - according to tool-side change-adapter (MT_BGR00106665)

A (1:2)

TCP

Depending on the drive type

Maximum deflection of the upper arm



OPTIONAL:
Clutch
MT_WST00112304

Interface for Sensor - (not included)
for example:
PEPPERL+FUCHS NBB2-F41-E2-V3

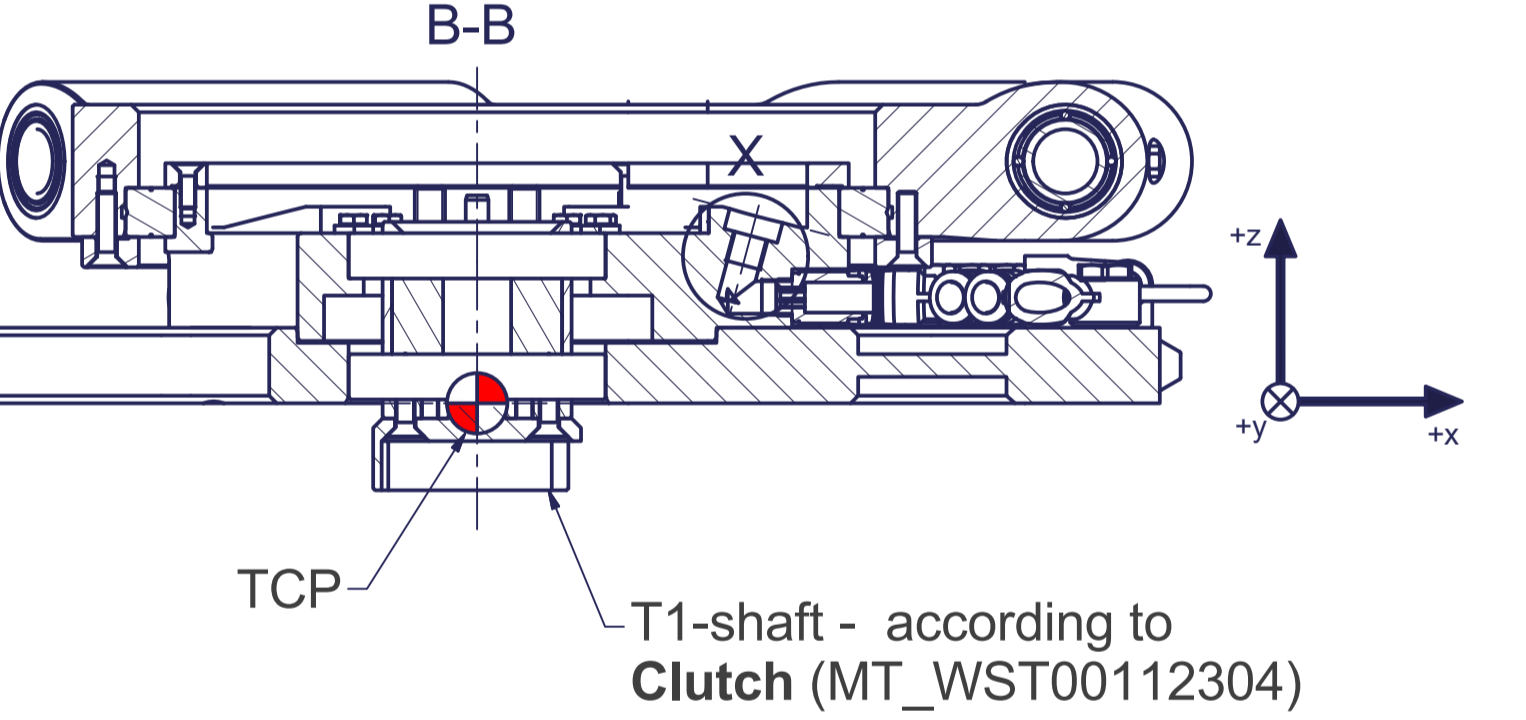
Tool Center Point
TCP (on the plane of the flange)

Interference contour from machine body

Maximum interference contour

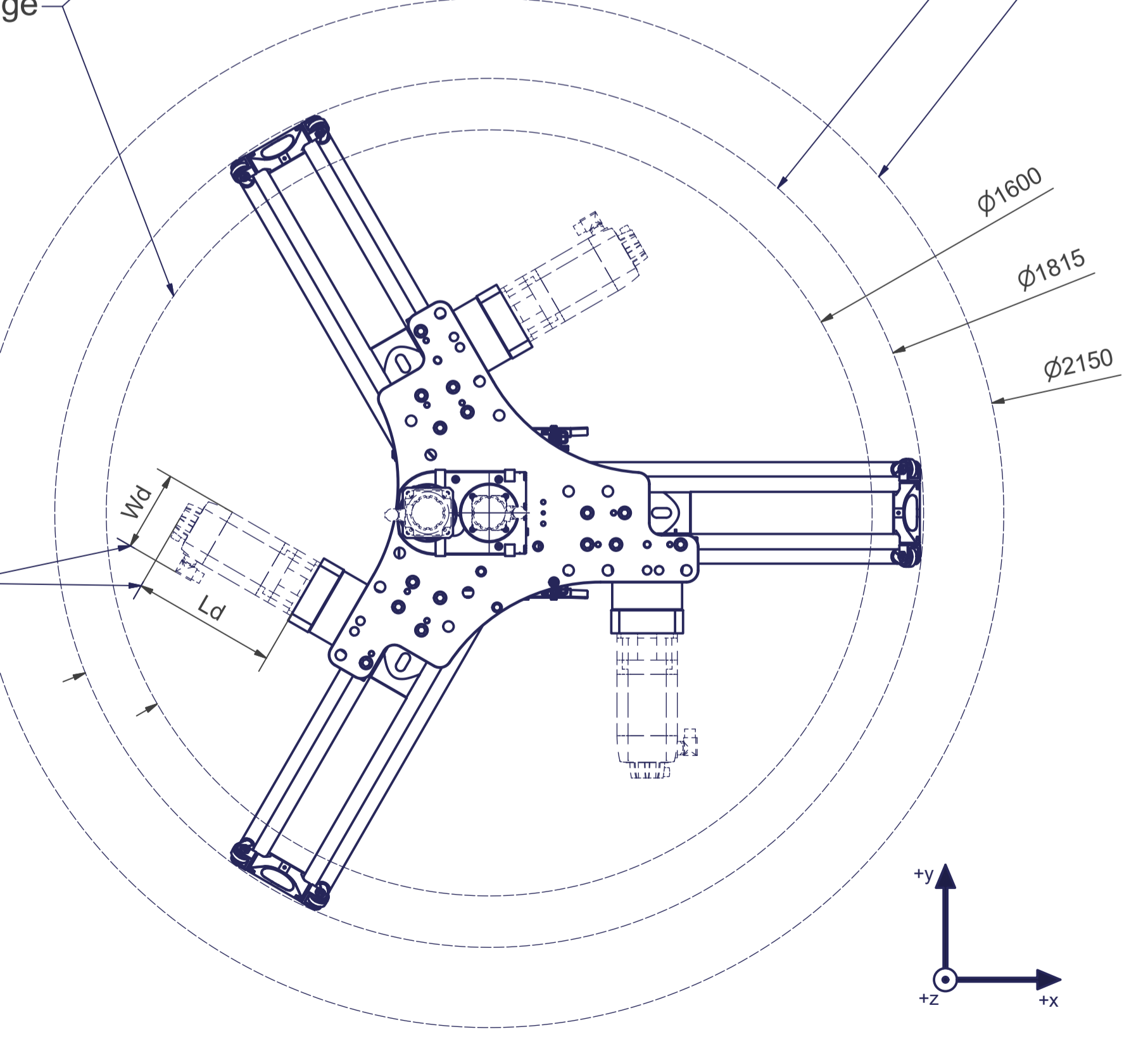
Y (1:1)

Interface for example for an electrical connector



TCP
T1-shaft - according to Clutch (MT_WST00112304)

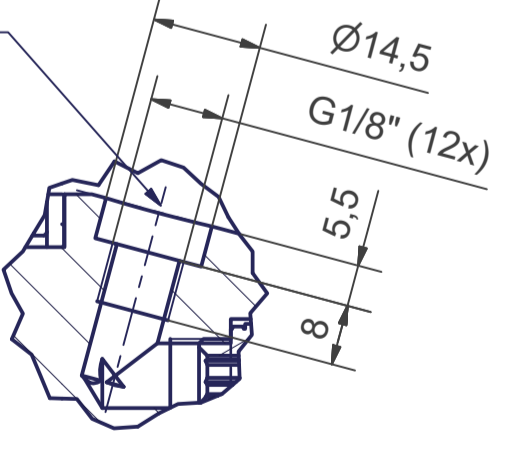
TCP - working range



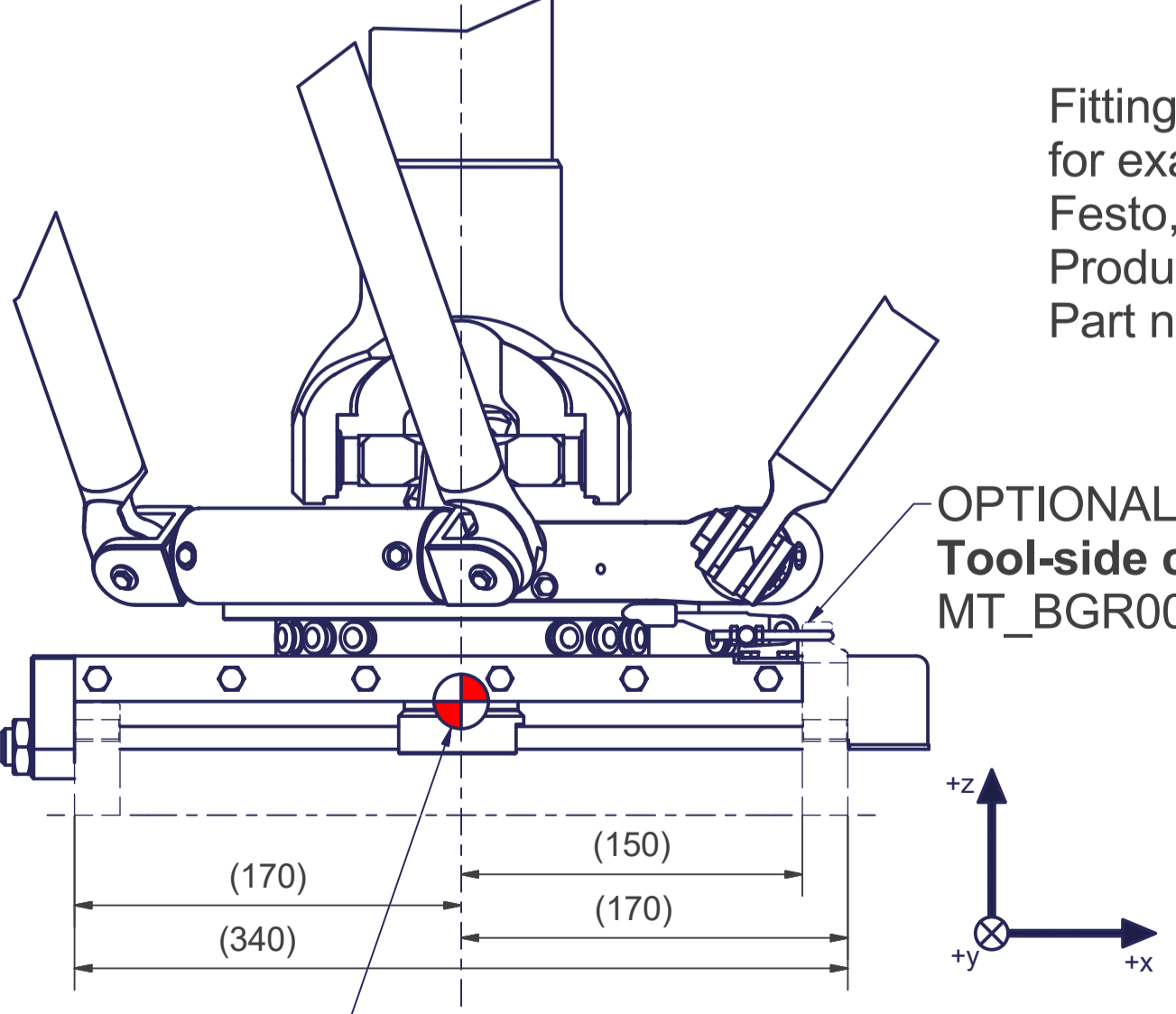
Z (1:3)

Fitting - (not included)
for example:
Festo, Push-in fitting
Product name: QS-1/8-10-I
Part number: 186109

X (1:1)



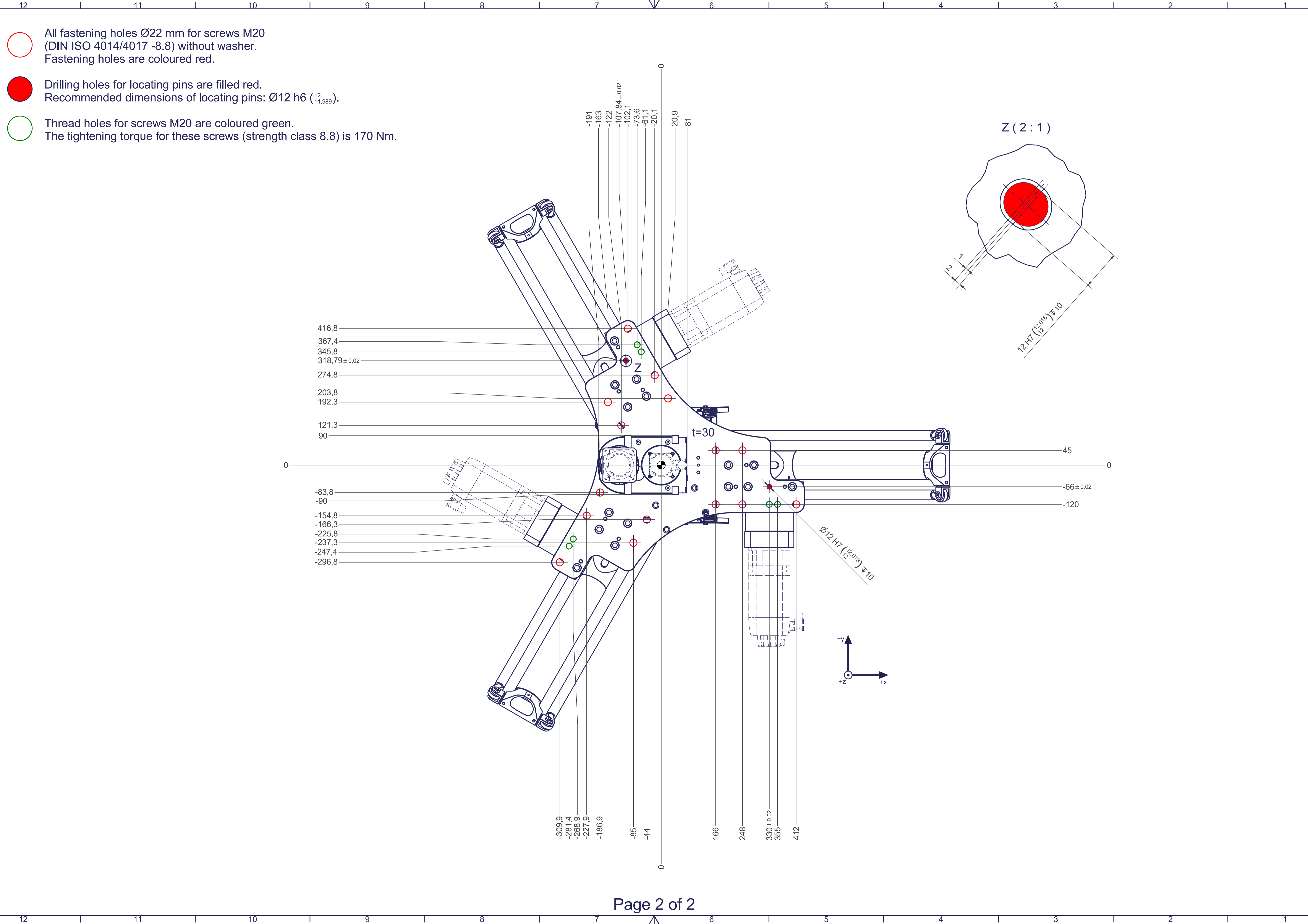
OPTIONAL:
Tool-side change-adapter
MT_BGR00106665



OPTIONAL:
Tool-side change-adapter MT_BGR00106665
Clutch MT_WST00112304

m= kg	A	p= bar
proj. storage surface = m²		v= l/min
First angle projection	P= kW	
	U= V / Hz / Ph	
	Imax= A	

Connecting dimensions,
valid for article number A_00070-T1-ATS



- All fastening holes $\varnothing 22$ mm for screws M20 (DIN ISO 4014/4017 -8.8) without washer. Fastening holes are coloured red.
- Drilling holes for locating pins are filled red. Recommended dimensions of locating pins: $\varnothing 12$ h6 ($\begin{smallmatrix} 12 \\ 11,989 \end{smallmatrix}$).
- Thread holes for screws M20 are coloured green. The tightening torque for these screws (strength class 8.8) is 170 Nm.

