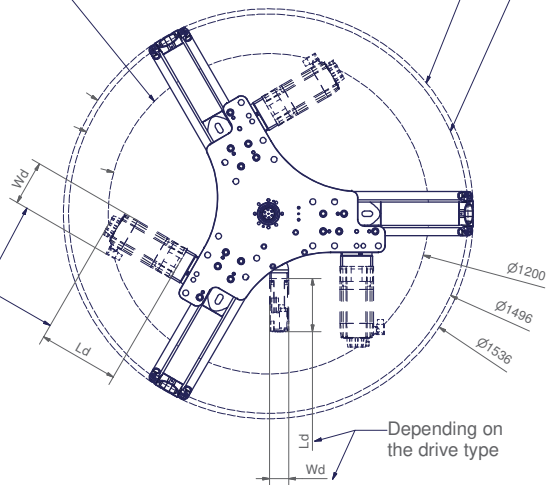


Tool Center Point
TCP (on the plane of the flange)

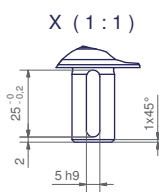
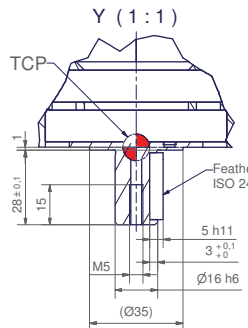
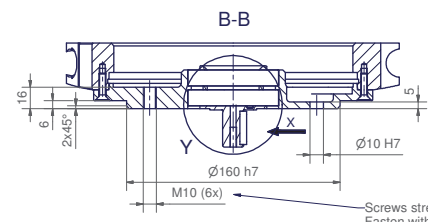
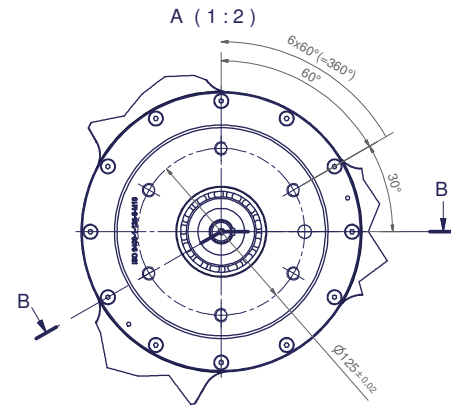
TCP - working range

Interference contour
from machine body

Maximum interference
contour

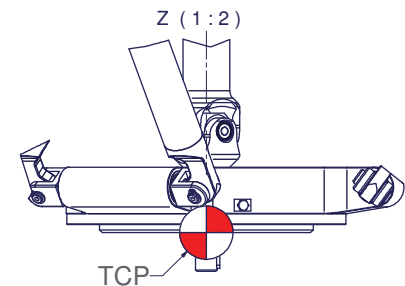
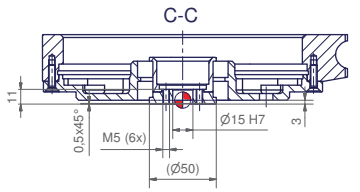
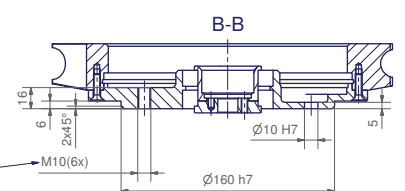
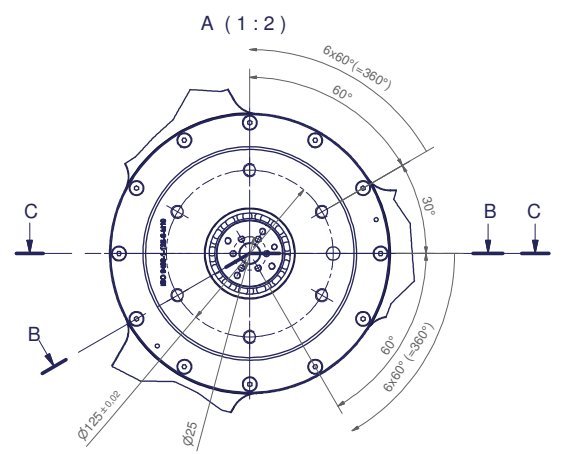


View "A" (A_00064-TS1, A_00833-TS1)
With Tool shaft "TS"



Screws strength class 8.8
Fasten with max. 40 Nm
Do not use bonding agent.

View "A" (A_00064-T1, A_00833-T1)
With Tool flange "T"

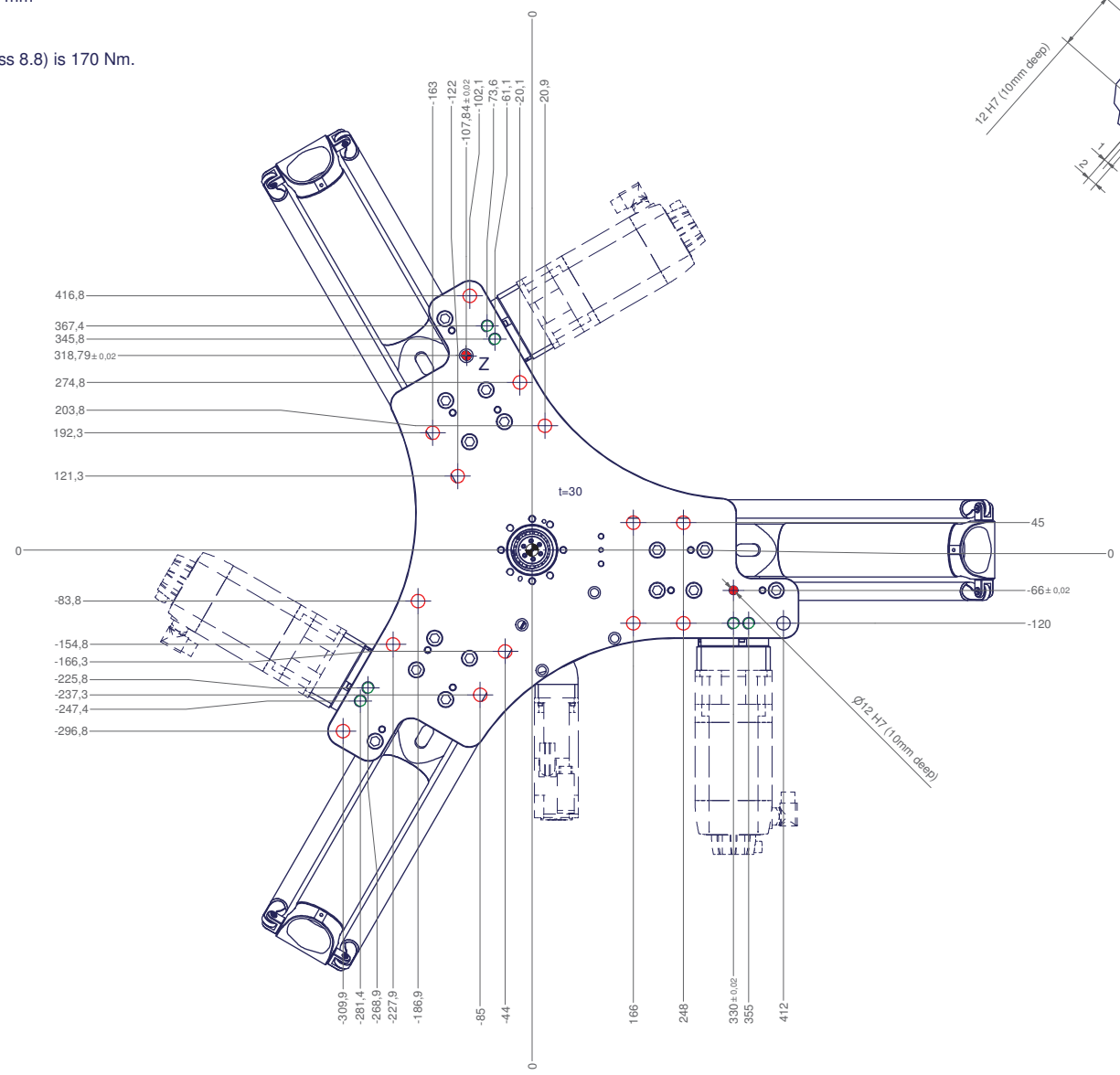
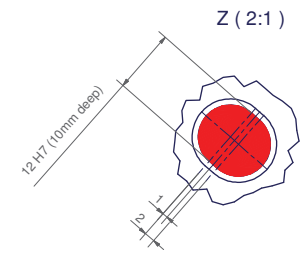


| | | |
|--|----------------------|----------|
| | | |
| m= kg | A | bar |
| projected storage surface = m ² | P= kW | v= l/min |
| U= V / Hz / Ph | I _{max} = A | |

Valid for article number A_00064-T1, A_00064-TS1,
A_00833-T1 and A_00833-TS1

12 11 10 9 8 7 6 5 4 3 2 1

- All fastening holes Ø22mm for screws M20 (DIN ISO 4014/4017 -8.8) without washer. Fastening holes are coloured red. The tightening torque for these screws (strength class 8.8) is 360 Nm. (In a steel frame)
- Drilling holes for locating pins are filled red. Recommended dimensions of locating pins: Ø12 h6 mm
- Thread holes for screws M20 are coloured green. The tightening torque for these screws (strength class 8.8) is 170 Nm.



12 11 10 9 8 7 6 5 4 3 2 1