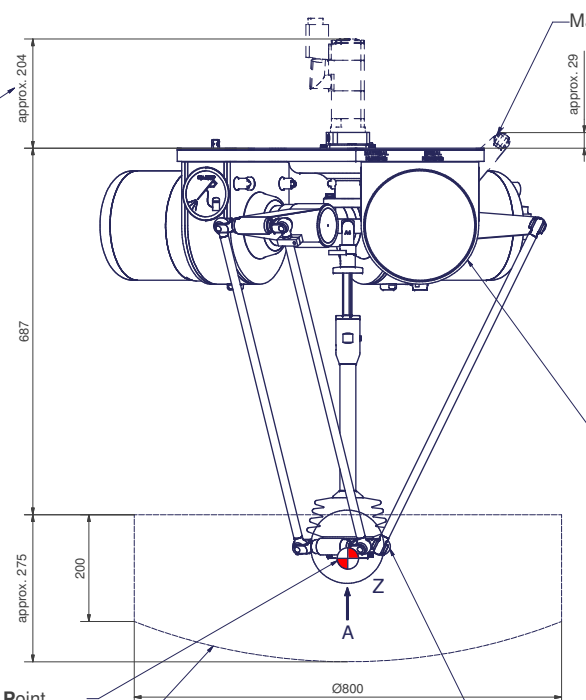
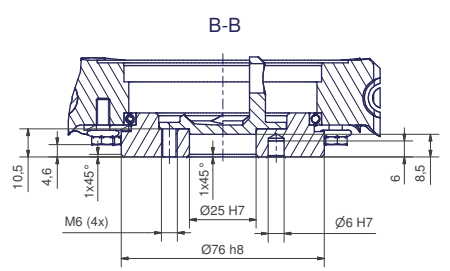
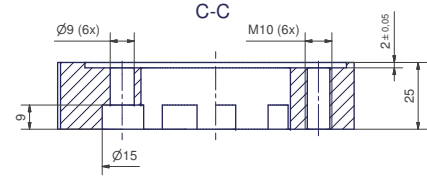
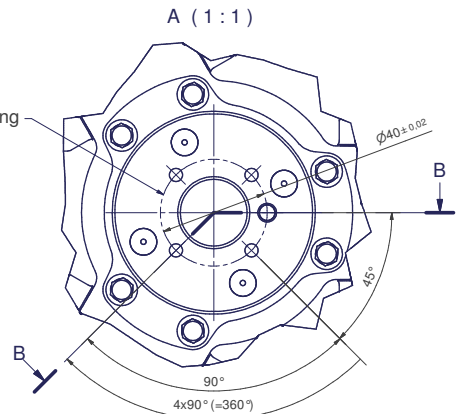


Depending on the drive type



Flange diagram according to ISO 9409-1-40-4-M6

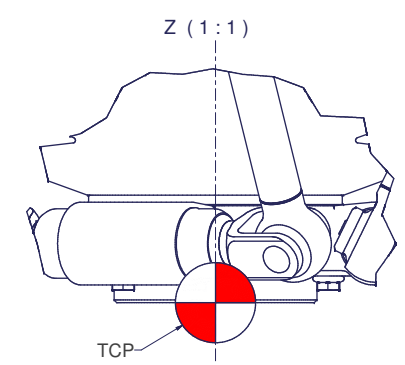
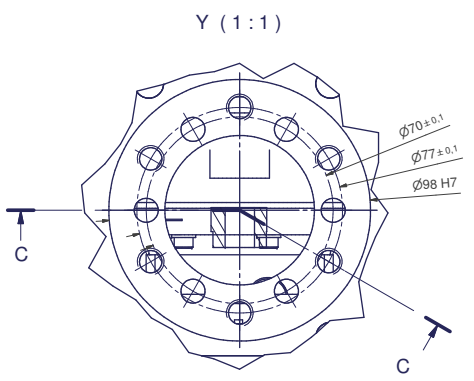
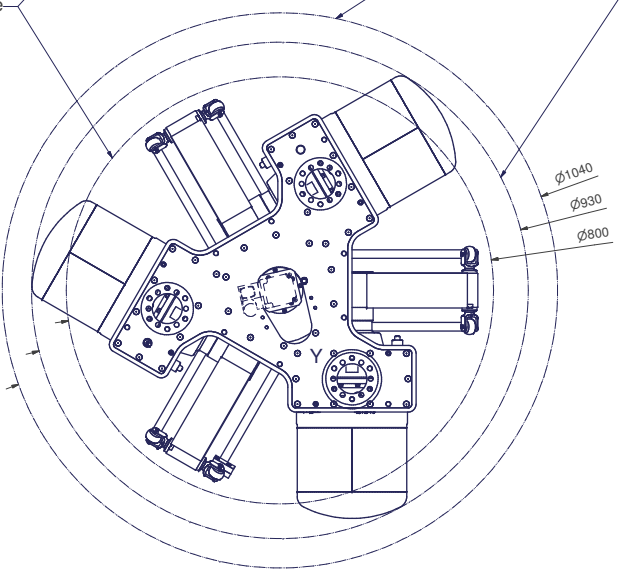


Tool Center Point (on the plane of the flange)

Interference contour from machine body



TCP - working range

Maximum interference contour



m= kg	A	p= bar
projected storage surface: m²	P= kW	v= l/min
	U= V / Hz / Ph	
	I _{max} = A	

Valid for article number A_00012-01-TI

-  All fastening screw threads M10, 10 mm deep. Fastening screw threads are coloured red.
-  Drilling holes for locating pins are filled red. Recommended dimensions of locating pins: $\varnothing 16$ h6 mm.

