

Depending on the drive type

Maximum deflection of the upper arm

Flange (not rotating)

Flange diagram according to ISO 9409-1-40-4-M6 (rotating)

Interference contour from machine body

Maximum interference contour

Tool Center Point
TCP (on the plane of the flange)

TCP - working range

Depending on the drive type

Z (1:1)

TCP

Connecting dimensions, valid for article number AL_00004

m= kg	A	p= bar
proj. storage surface = m²	P= kW	v= l/min
First angle projection	U= V / Hz / Ph	autonox
	lmax= A	lean line

12

11

10

9

8

7

6

5

4

3

2

1

H

H

G

G

F

F

E

E

D

D

C

C

B

B

A

A

12

11

10

9

8

7

6

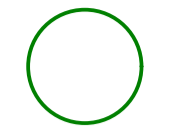
5

4

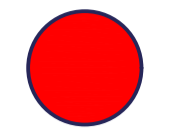
3

2

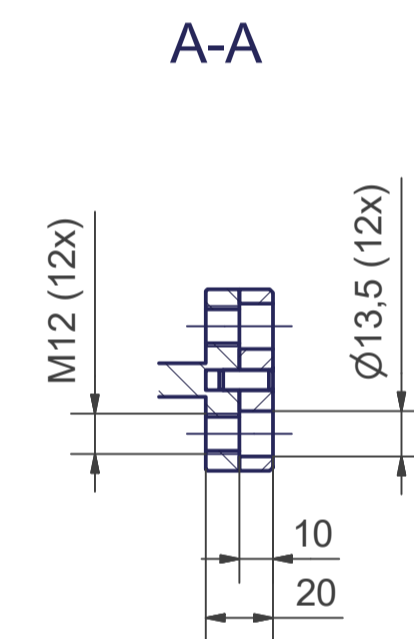
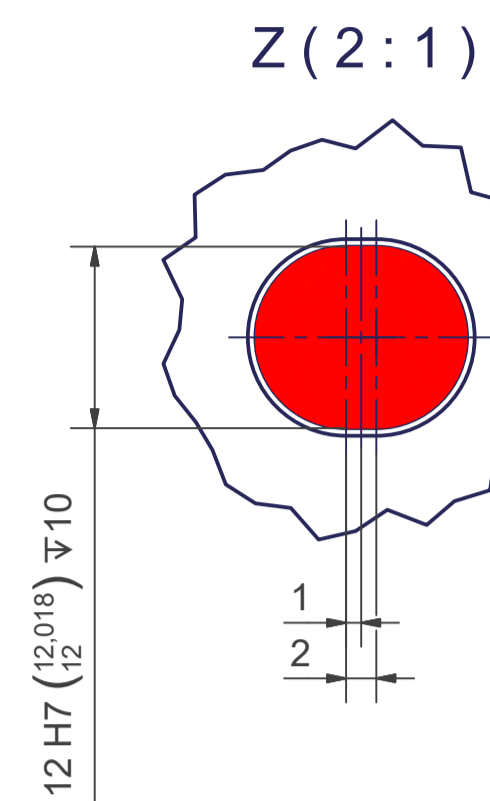
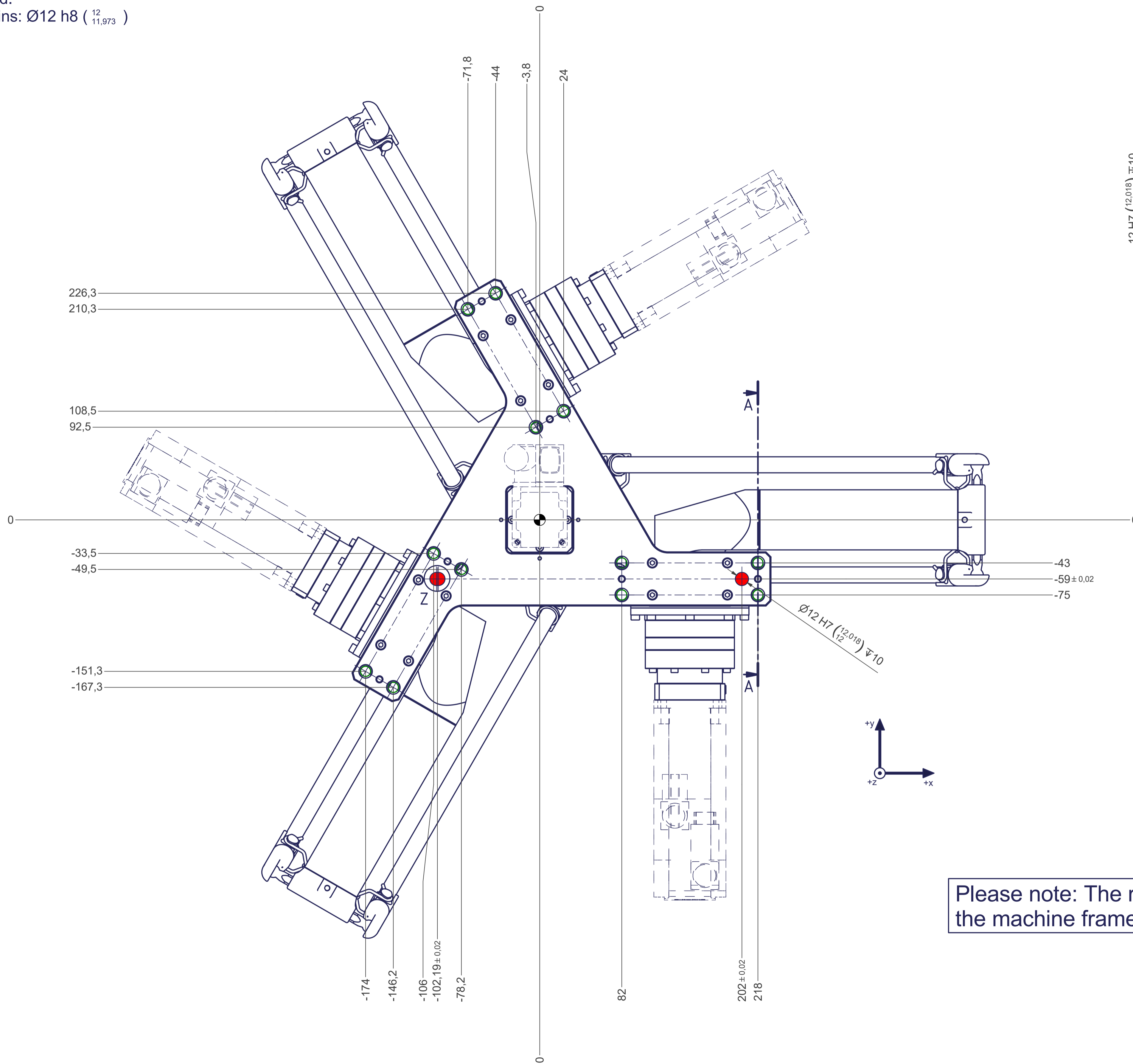
1



Thread holes for screws M12 are coloured green.
The tightening torque for these screws (strength class 8.8) is 41 Nm.



Drilling holes for location pins are filled red.
Recommended dimensions for locating pins: $\text{Ø}12 \text{ h}8 \left(\begin{smallmatrix} 12 \\ 11,973 \end{smallmatrix} \right)$



Please note: The required flatness of the machine frame interface is 0,1mm.