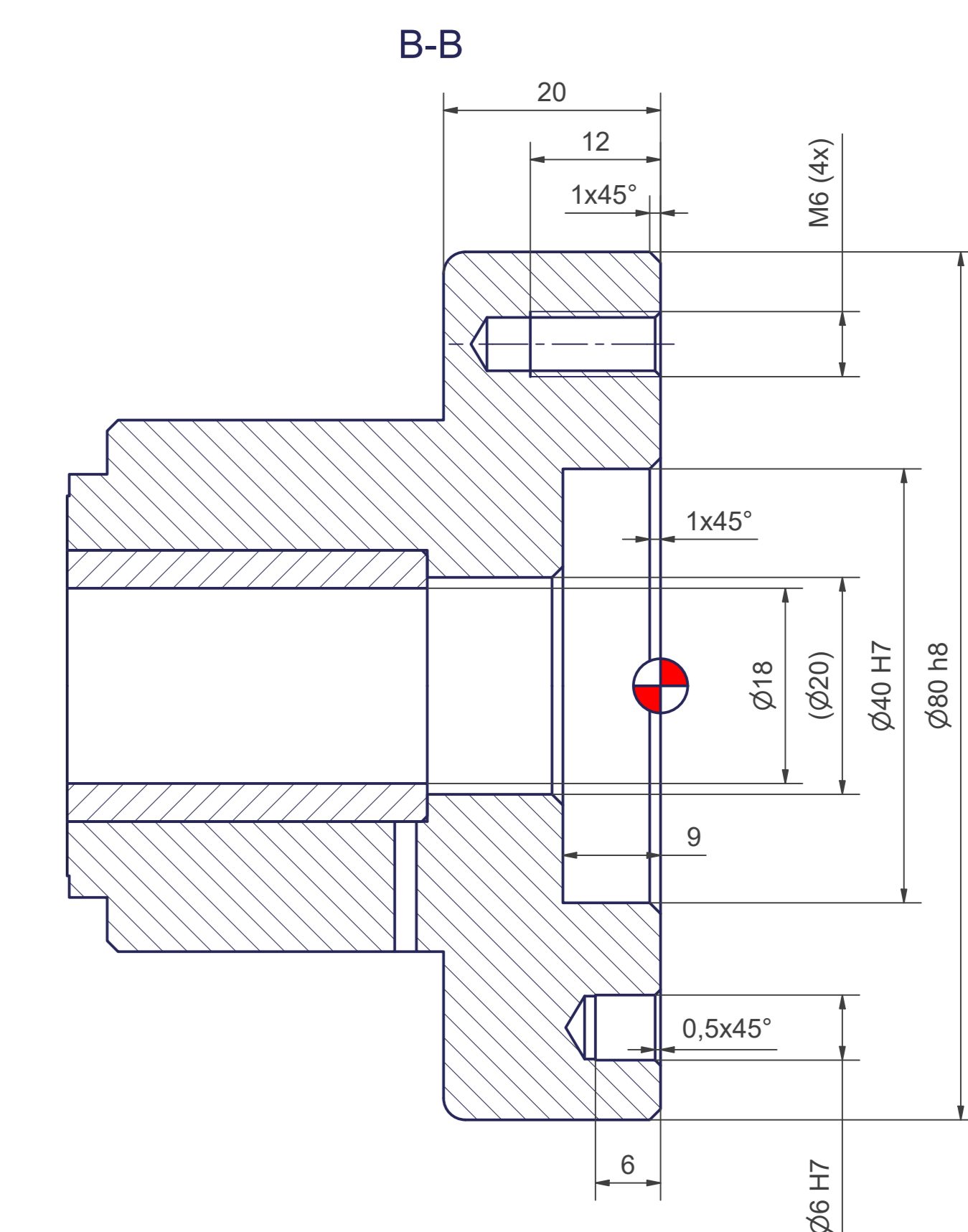
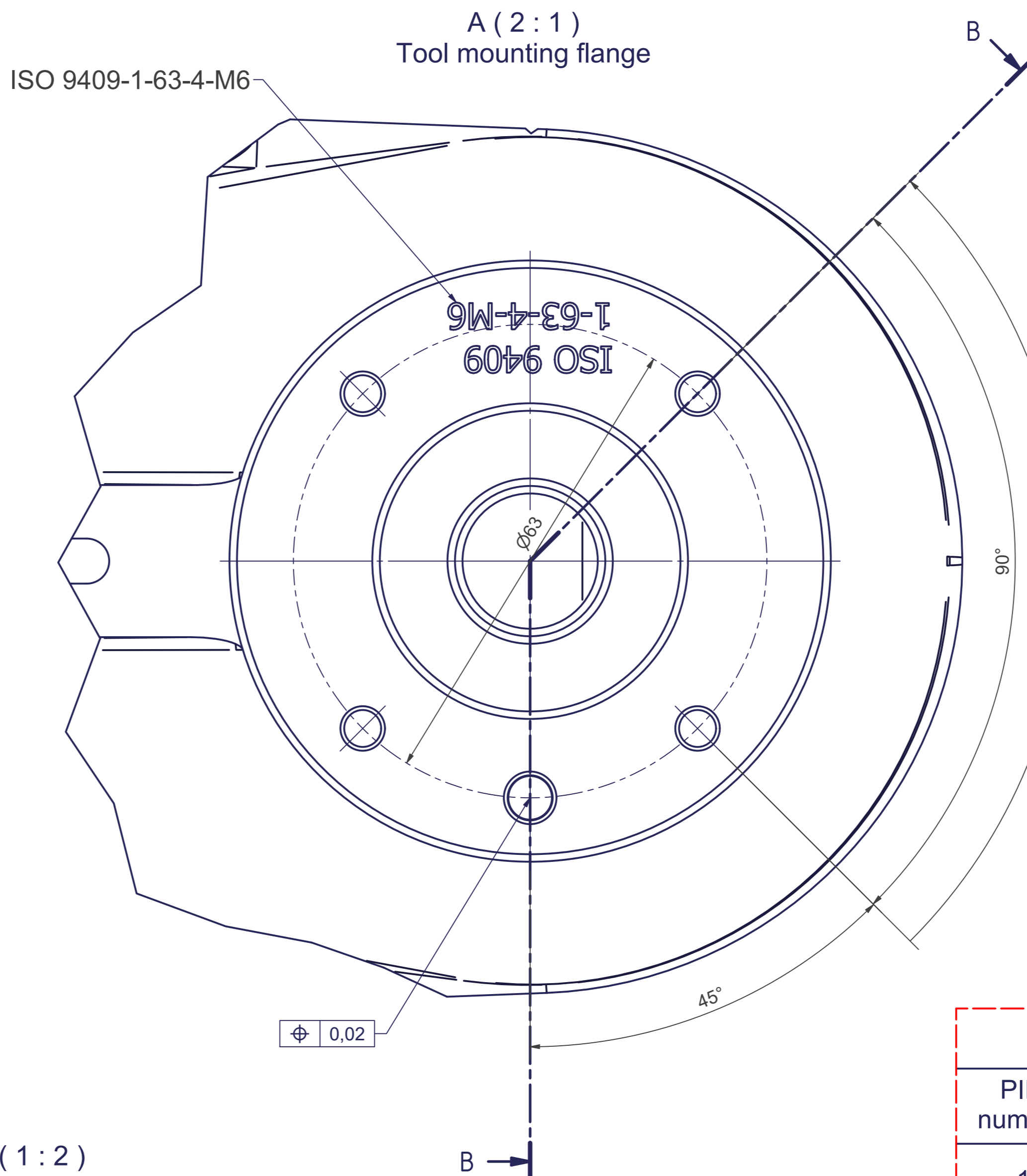
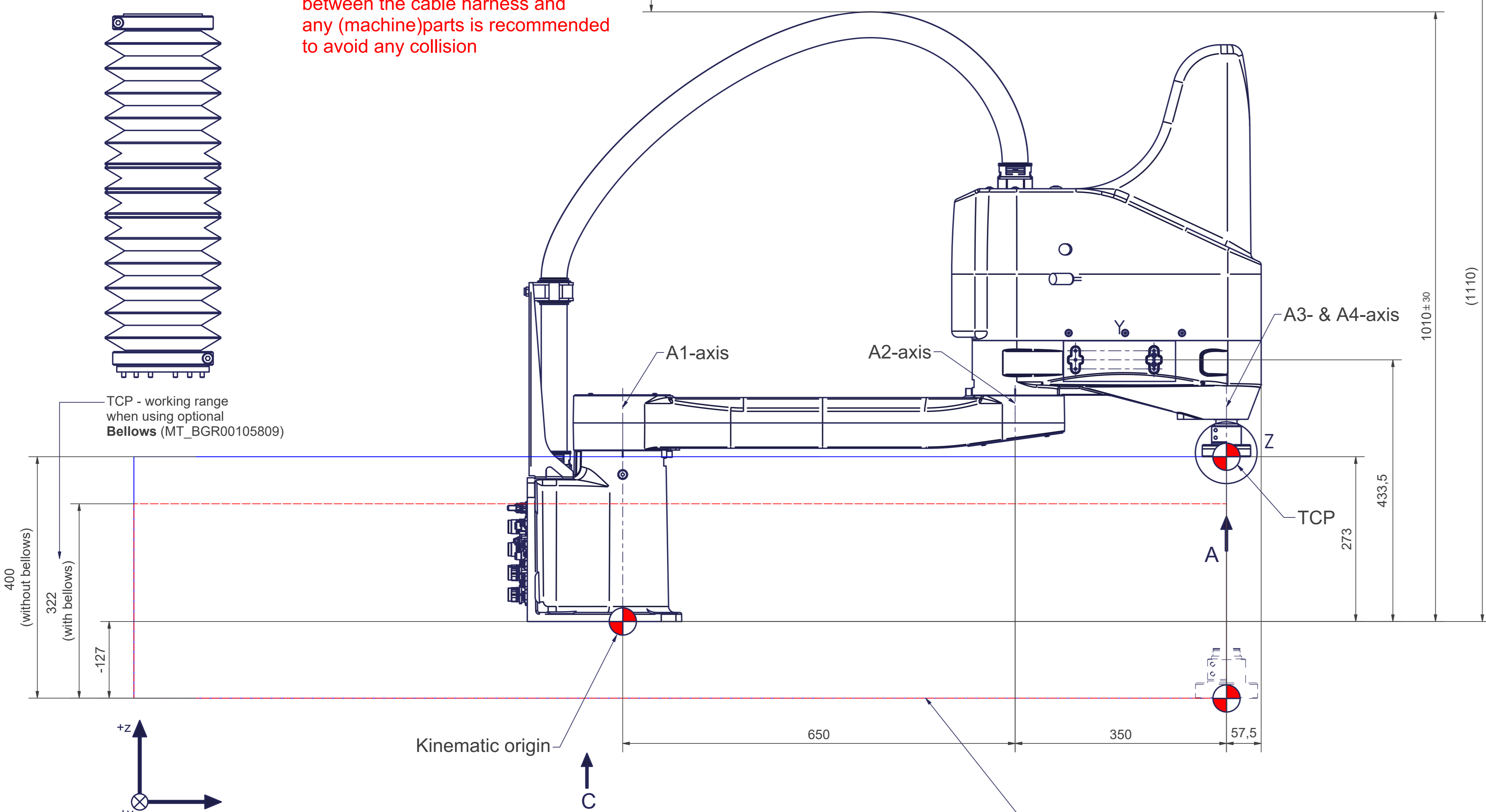


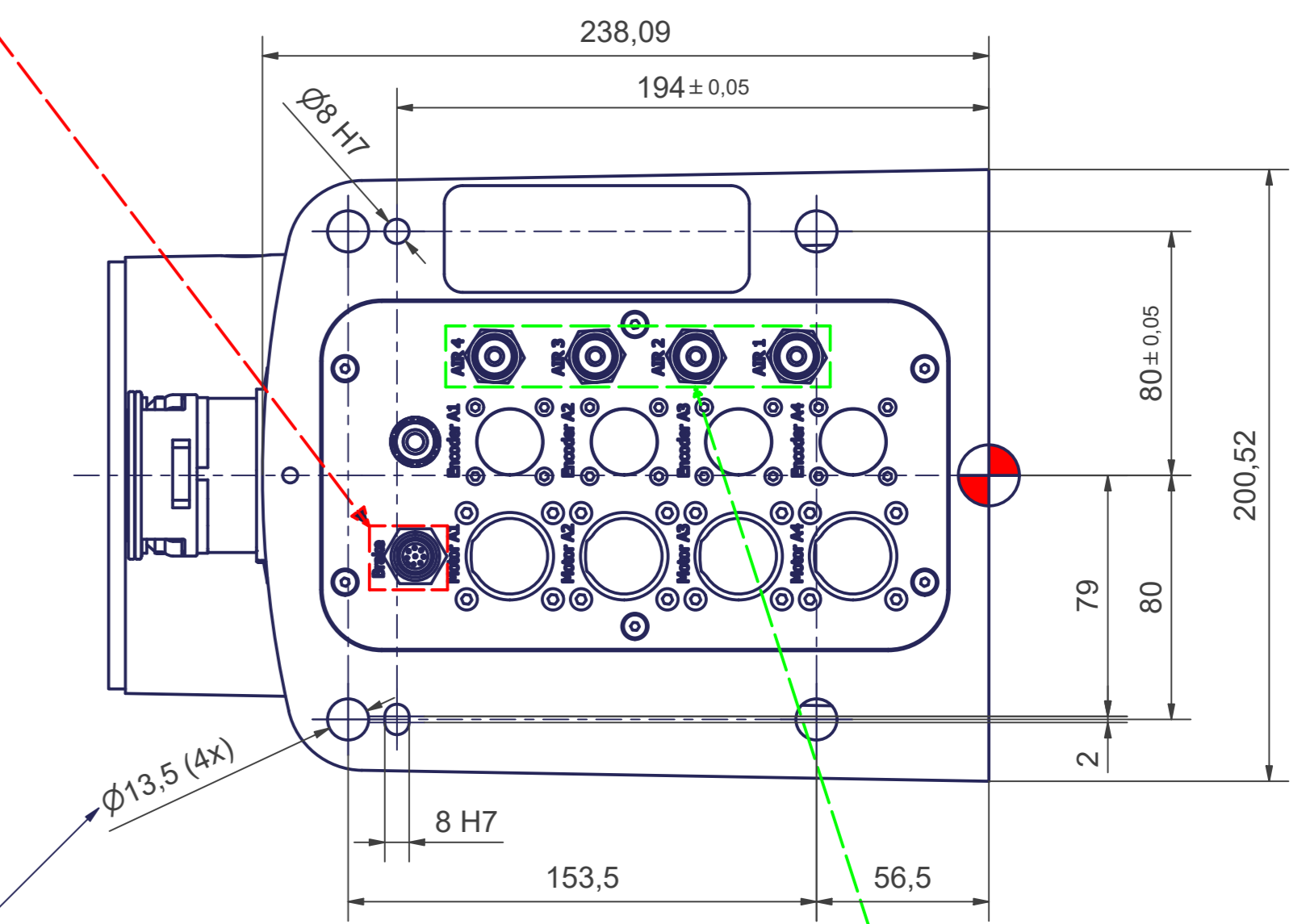
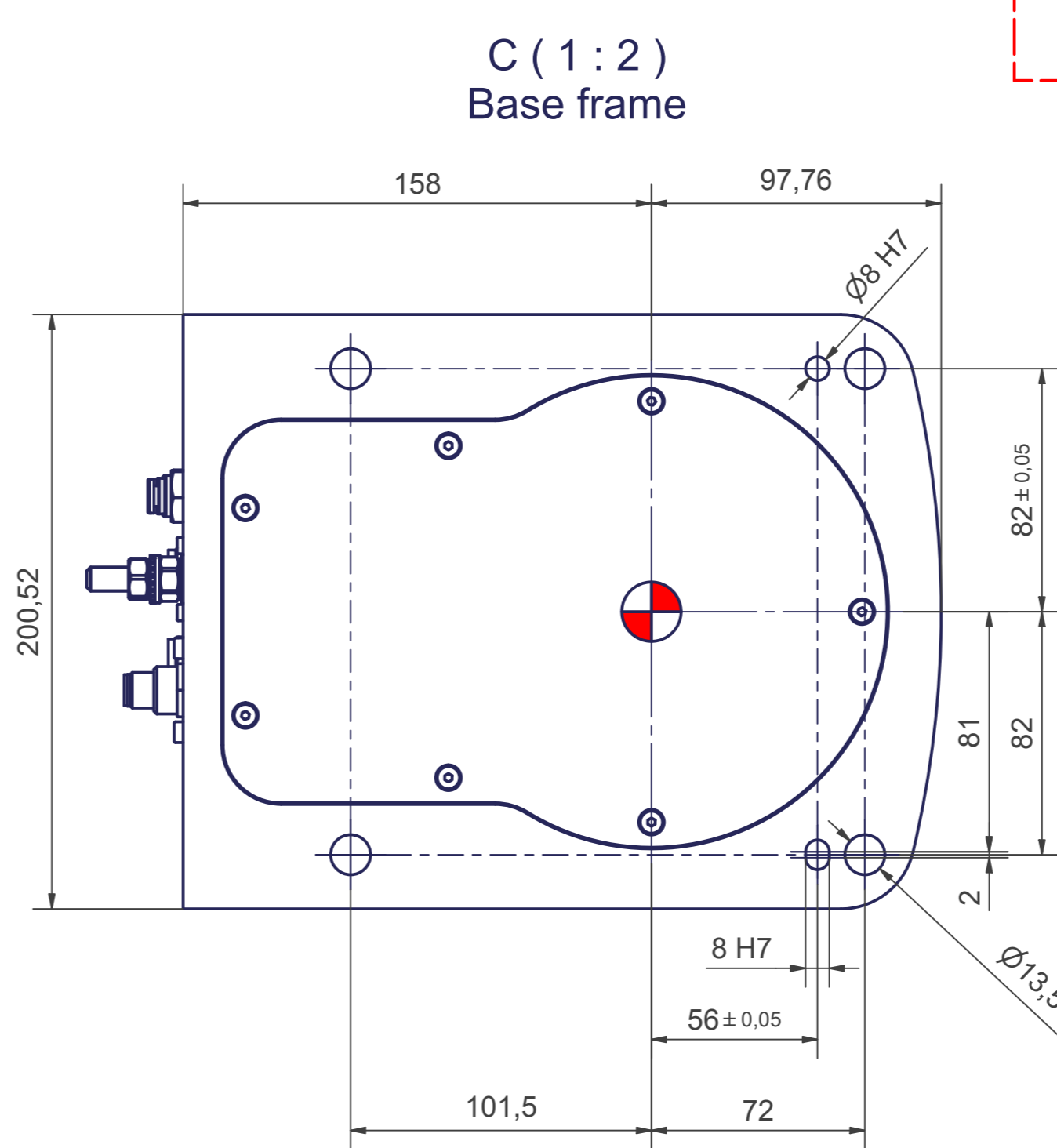
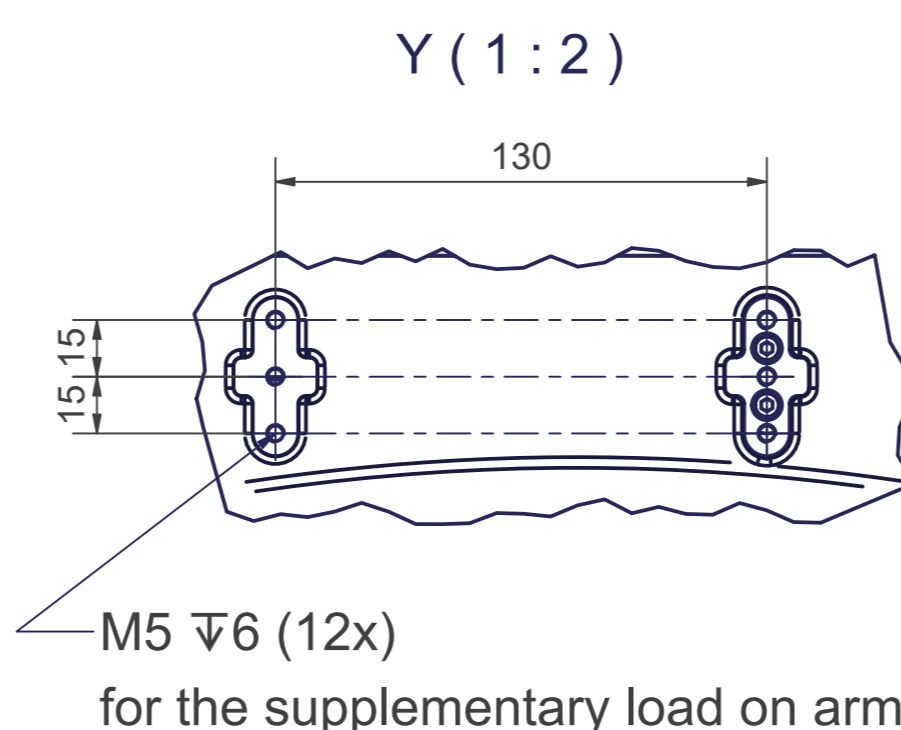
Optional Bellows (1:2)

A minimum distance of 100mm between the cable harness and any (machine)parts is recommended to avoid any collision



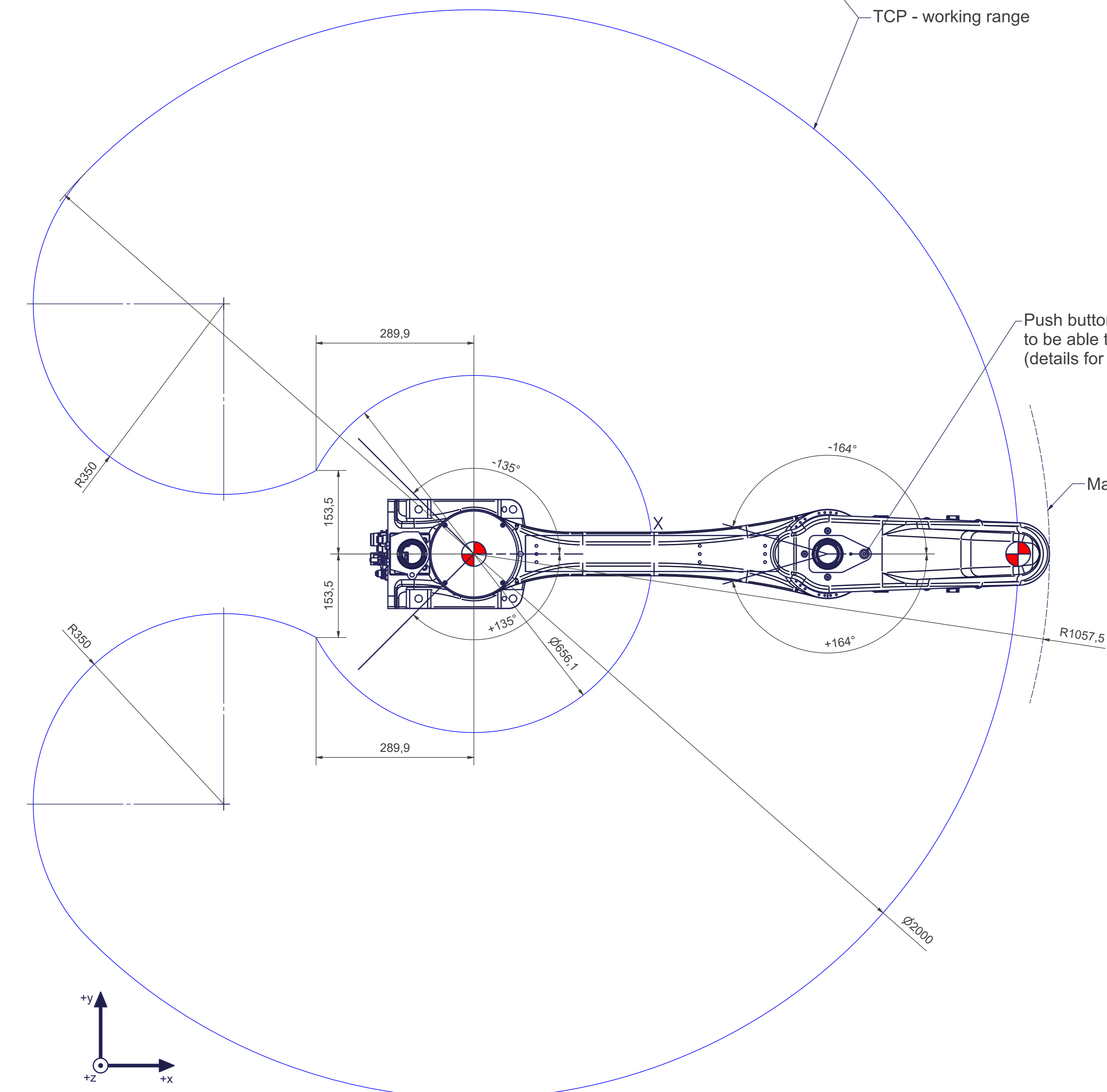
**PIN assignment by autonox Robotics**

PIN number	Connection to	M12 8-pin male
1	Push button	
2	Push button	
3 to 8	Not connected	



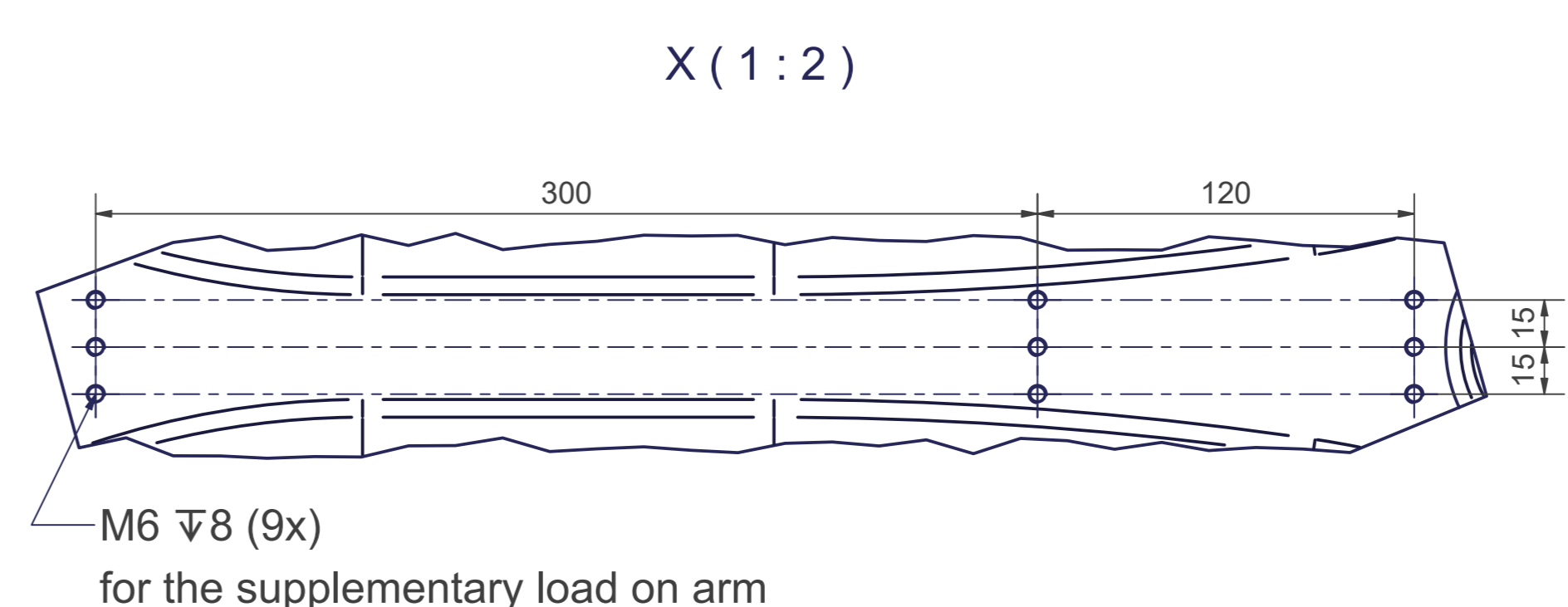
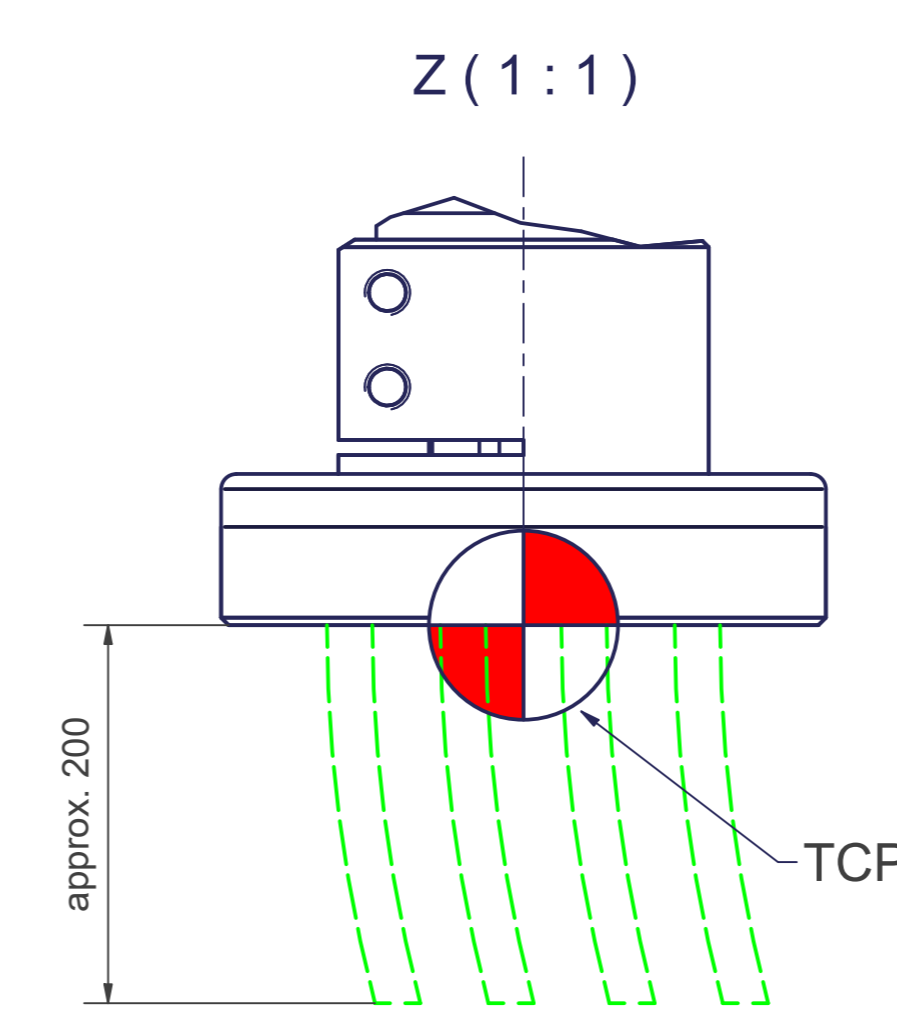
for screws M12 (DIN ISO 4014/4017-8.8) the tightening torque for these screws is 83 Nm (in steel frame).

Incl. fourfold integrated media supply to the end effector (compressed air 8 bar / vacuum -1 bar / D = 6mm d = 4mm)



Push button, for example to be able to release the motor brakes (details for connection see table "PIN assignment")

Maximum interference



sCara4-1000-6kg		Motion	
Axes	4	Axes	Range fully usable
Payload (on TCP)	6 kg	A1	± 135°
Reach	1000 mm	A2	± 164°
Mounting position	Floor, ceiling, wall	A3	- 127 mm / + 273 mm
		A4	± 360°

More information can be found in the document "calibration dimensions"

Connecting dimensions, valid for article number: AT\_00027

OPTIONAL:  
Bellows MT\_BGR00105809

kg	kg	A	bar
m <sup>2</sup>	m <sup>2</sup>	P <sub>z</sub>	l/min
U <sub>n</sub>	U <sub>n</sub>	V / Hz / Ph	
I <sub>max</sub>	I <sub>max</sub>	A	