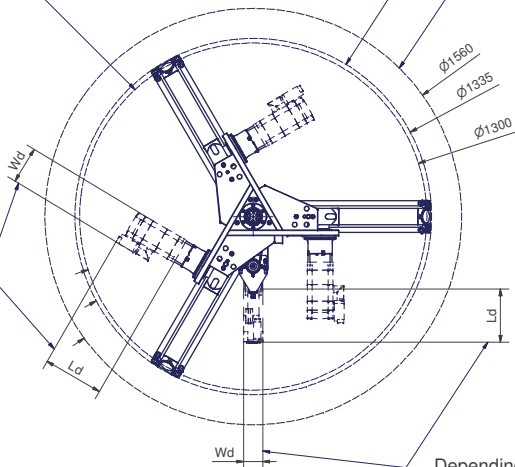


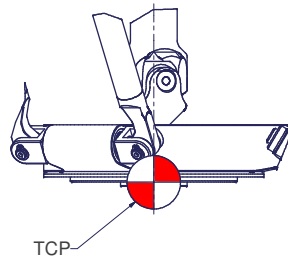
Tool Center Point
 TCP (on the plane of the flange)

TCP - working range

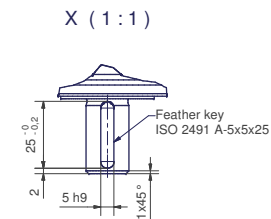
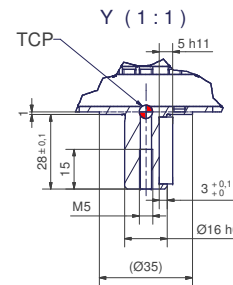
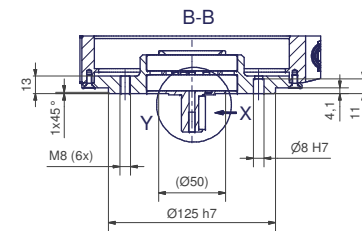
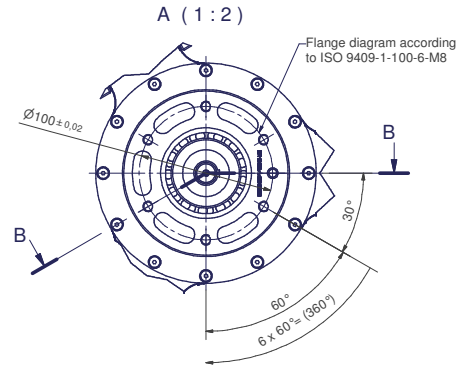
Depending on the drive type



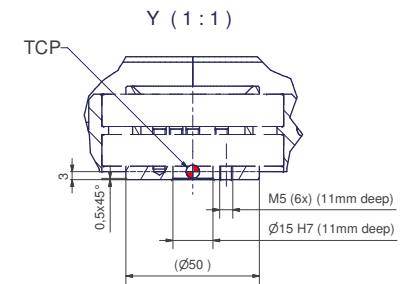
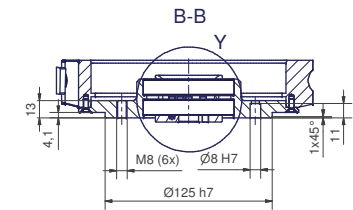
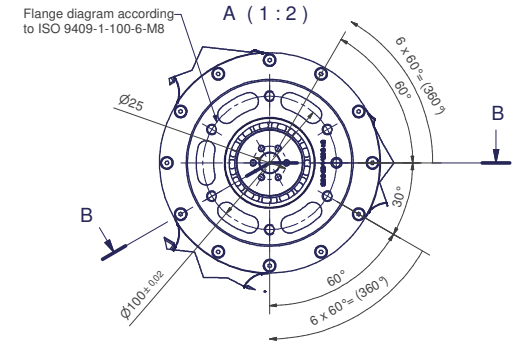
Z (1:2)



View "A" (A_00051-TS1)
 With Tool shaft "TS"



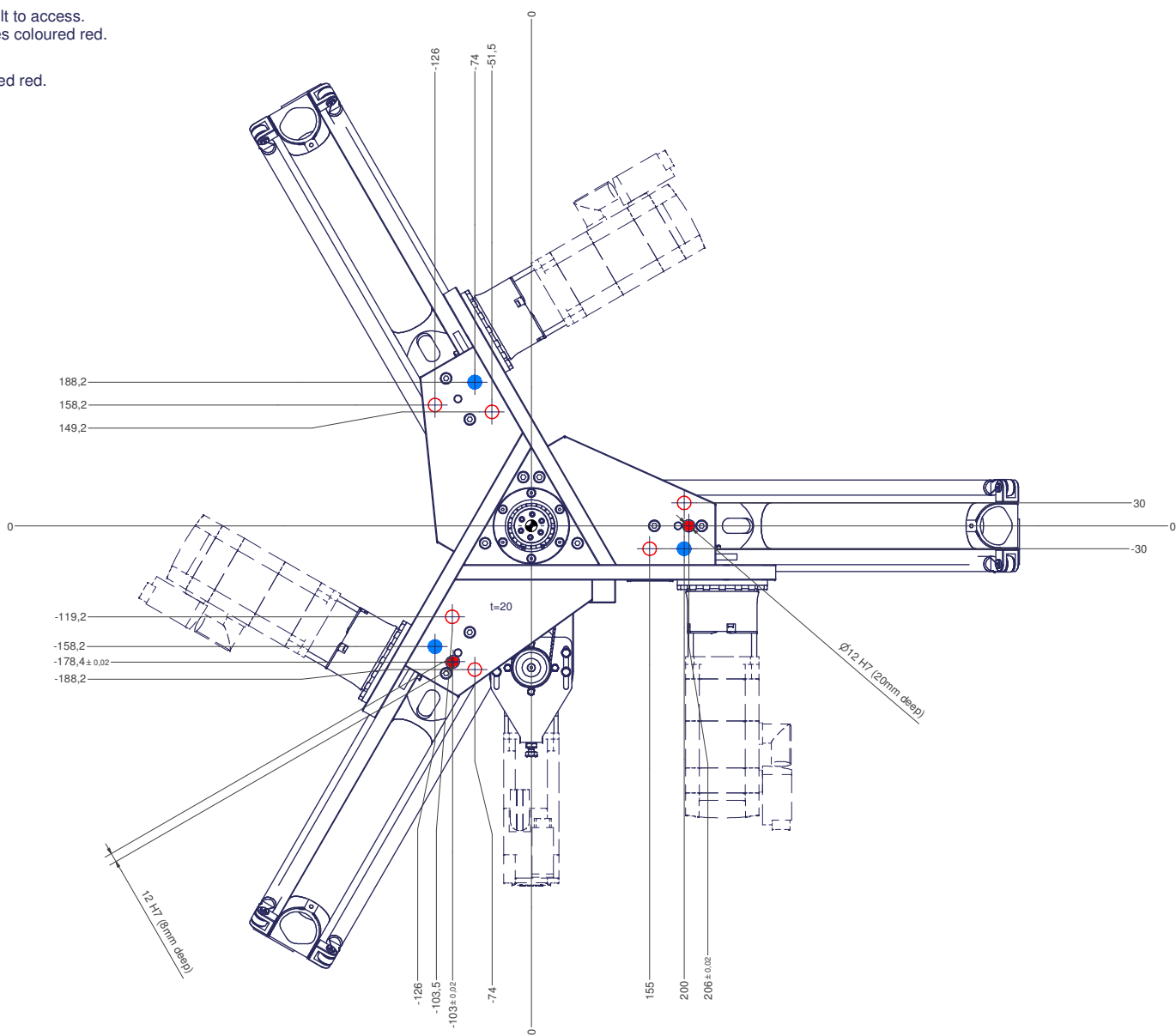
View "A" (A_00051-T1)
 With Tool flange "T"



m= kg	A	bar
projected storage surface = m ²	P= kW	l/min
U= V / Hz / Ph	I _{max} = A	

12 11 10 9 8 7 6 5 4 3 2 1

- All fastening holes $\varnothing 17,5\text{mm}$ for screws M16 (DIN ISO 4014/4017 -8.8) without washer. Fastening holes are coloured red.
- Fastening holes filled blue are difficult to access. We recommend using fastening holes coloured red.
- Drilling holes for locating pins are filled red.



12 11 10 9 8 7 6 5 4 3 2 1