

Maximum deflection of the upper arm

Flange diagram according to ISO 9409-1-100-6-M8

A (1:1)

B

Interference contour from machine body

Maximum interference contour

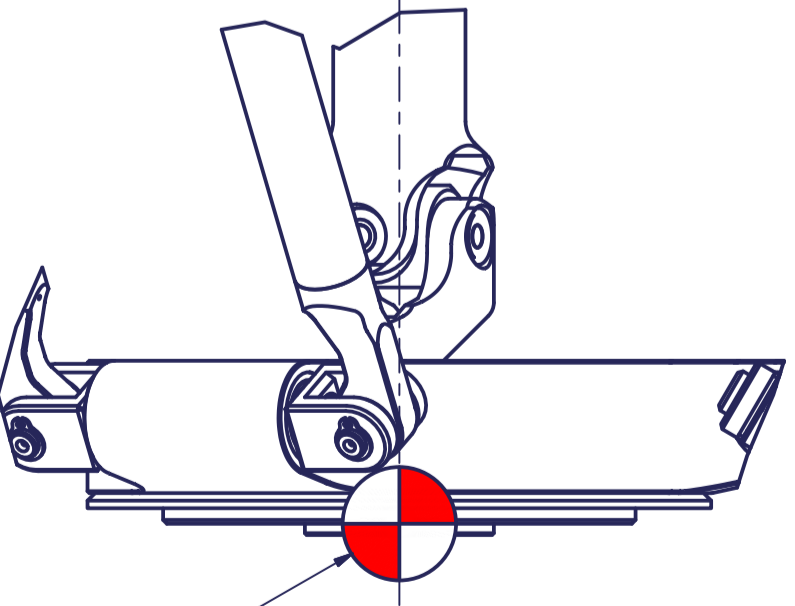
Tool Center Point
TCP (on the plane of the flange)

TCP - working range

Depending on the drive type

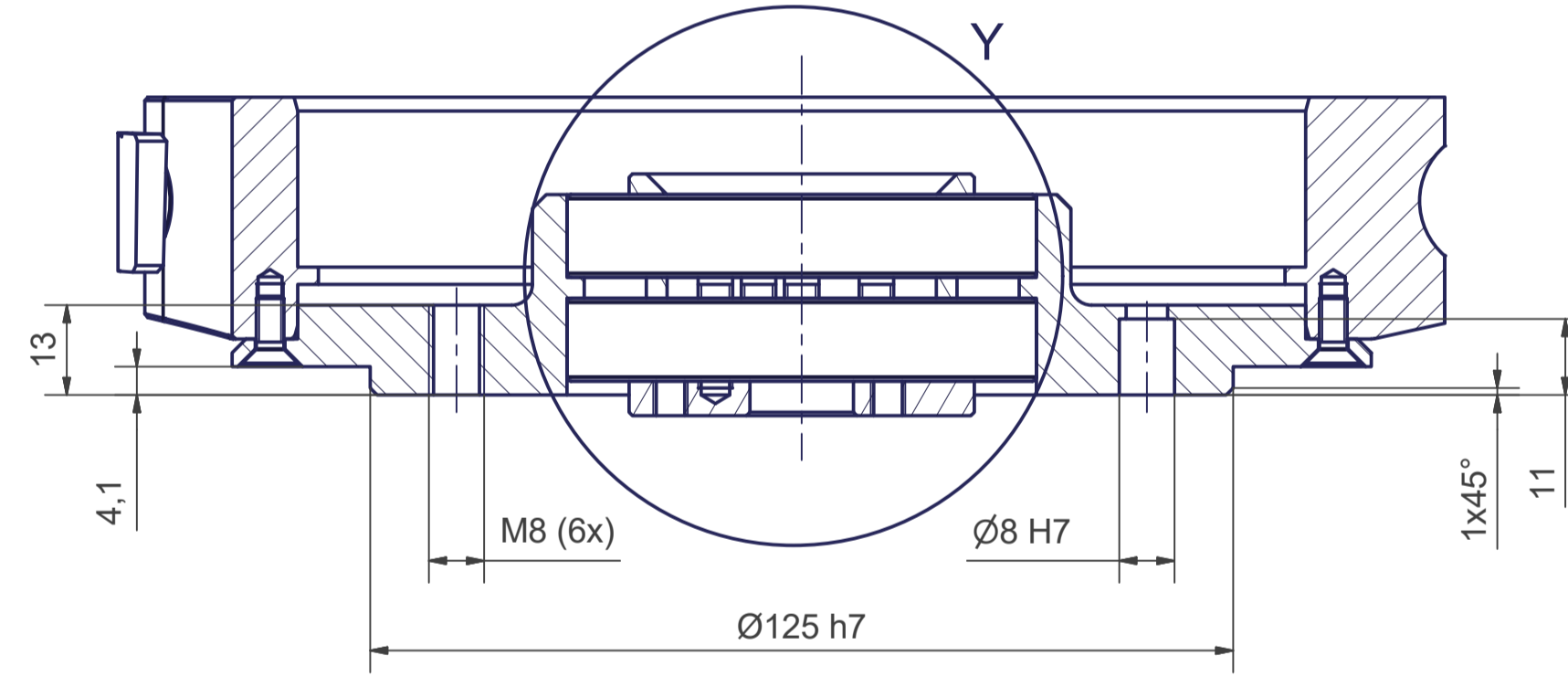
Depending on the drive type

Z (1:2)

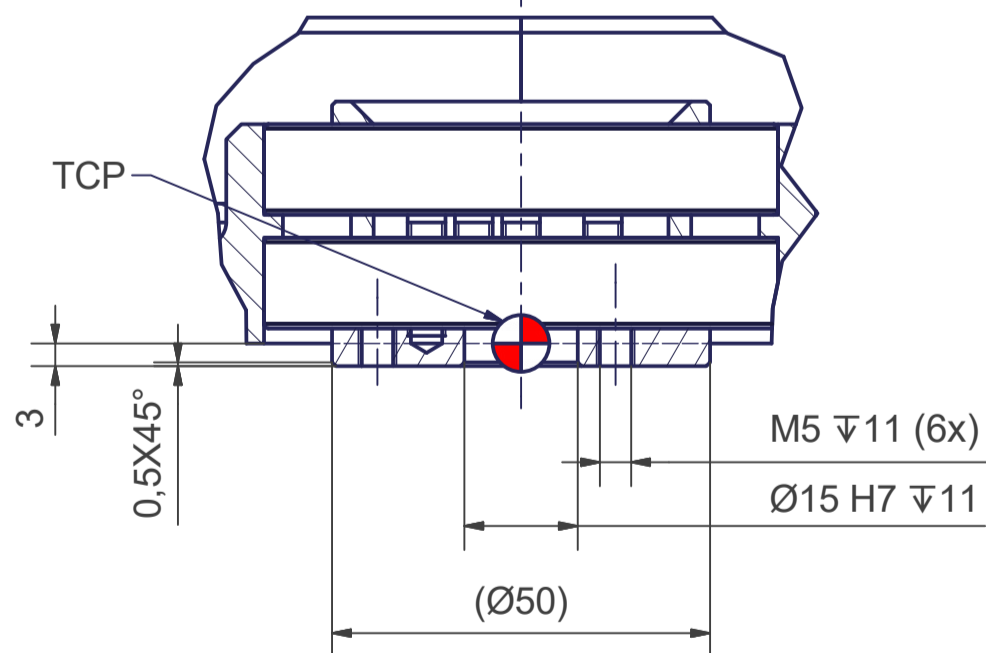


TCP

B-B



Y (1:1)



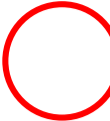

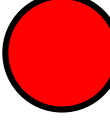
Connecting dimensions, valid for article number A_00055-T1

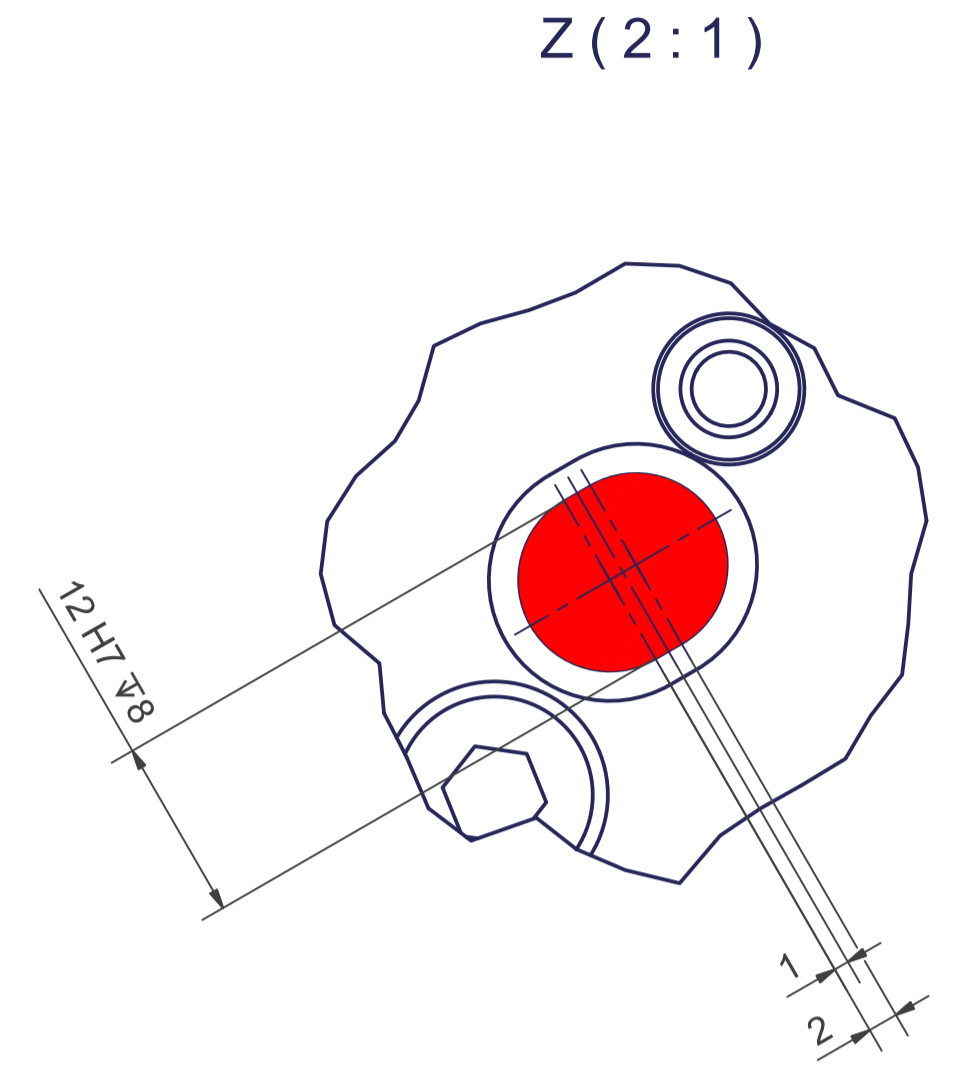
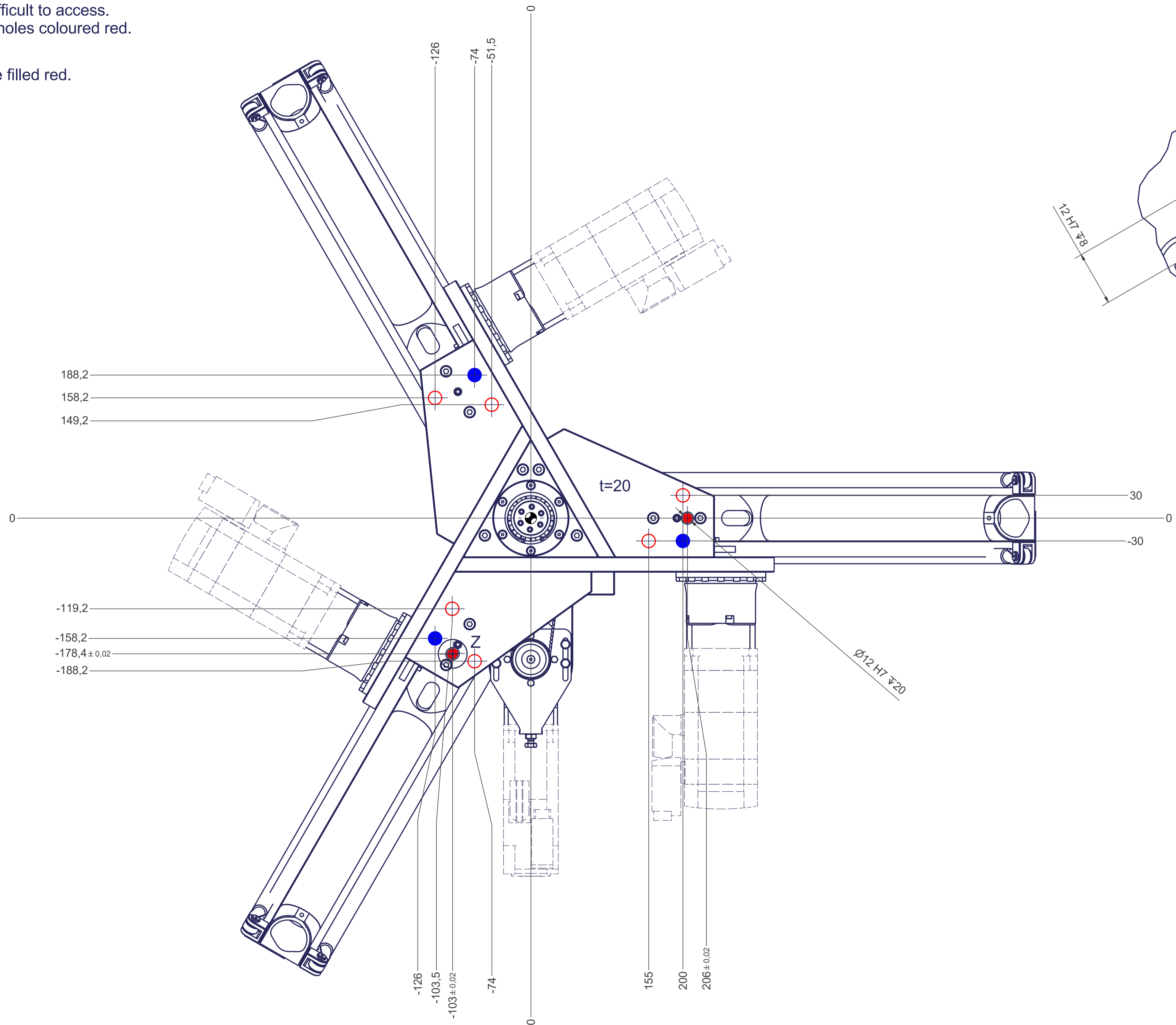
m= kg	A	p= bar
proj. storage surface = m ²	P= kW	v̇= l/min
	U= V / Hz / Ph	
	I _{max} = A	



A_00055-T1

12 11 10 9 8 7 6 5 4 3 2 1

-  All fastening holes $\varnothing 17,5\text{mm}$ for screws M16 (DIN ISO 4014/4017 -8.8) without washer. Fastening holes are coloured red.
-  Fastening holes filled blue are difficult to access. We recommend using fastening holes coloured red.
-  Drilling holes for locating pins are filled red.



12 11 10 9 8 7 6 5 4 3 2 1