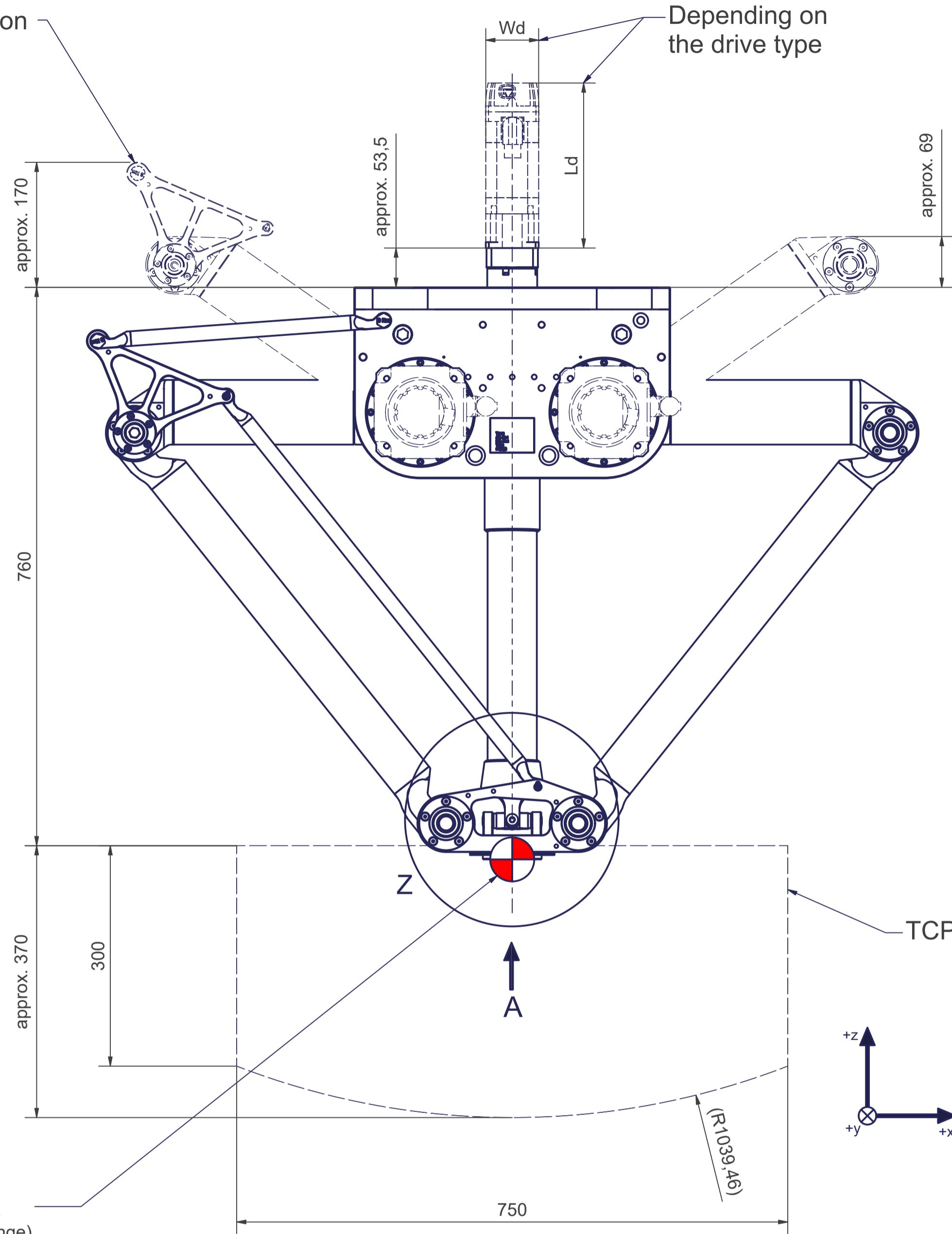


Maximum deflection of the upper arm

Depending on the drive type

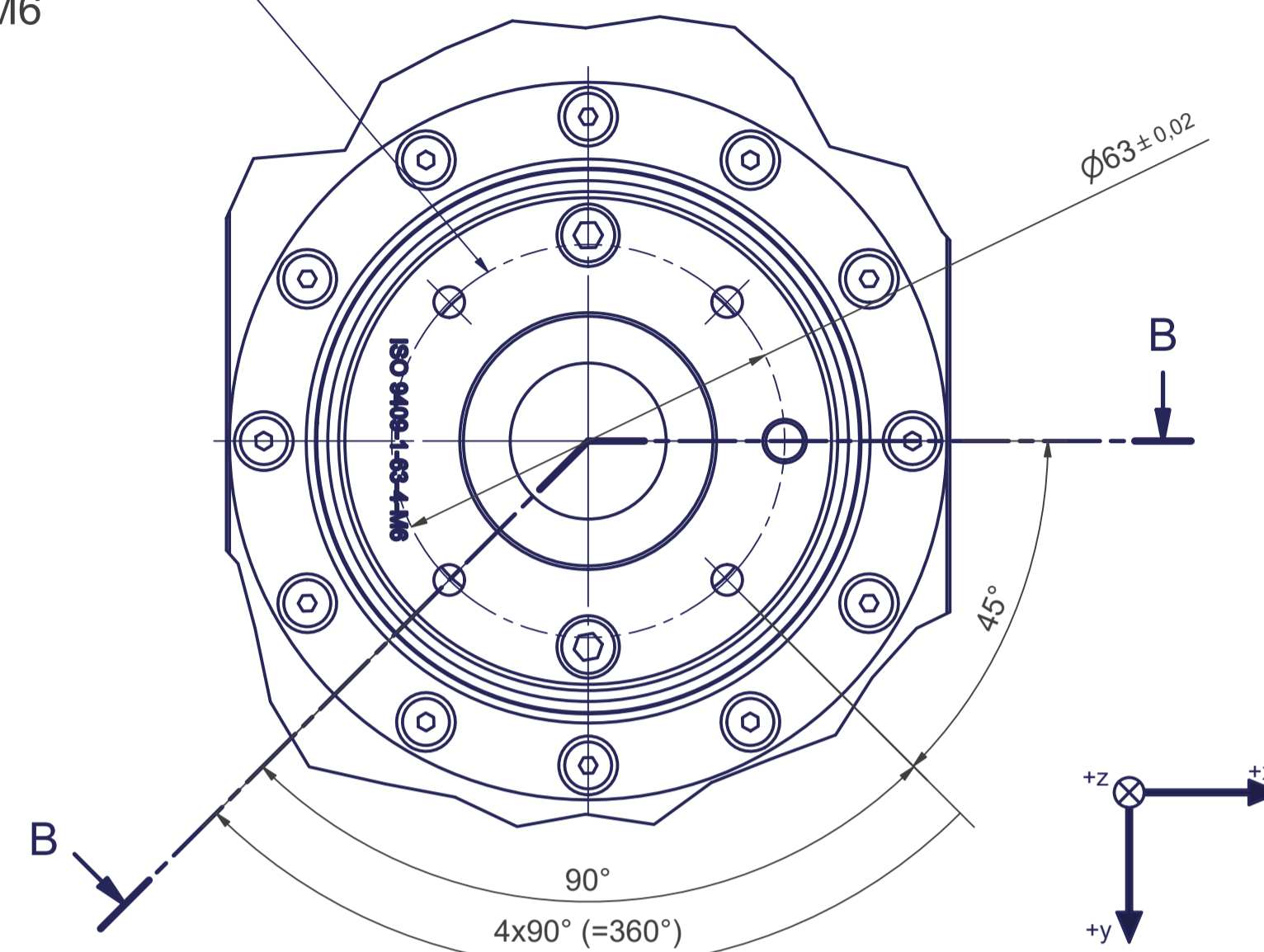


Tool Center Point
TCP (on the plane of the flange)

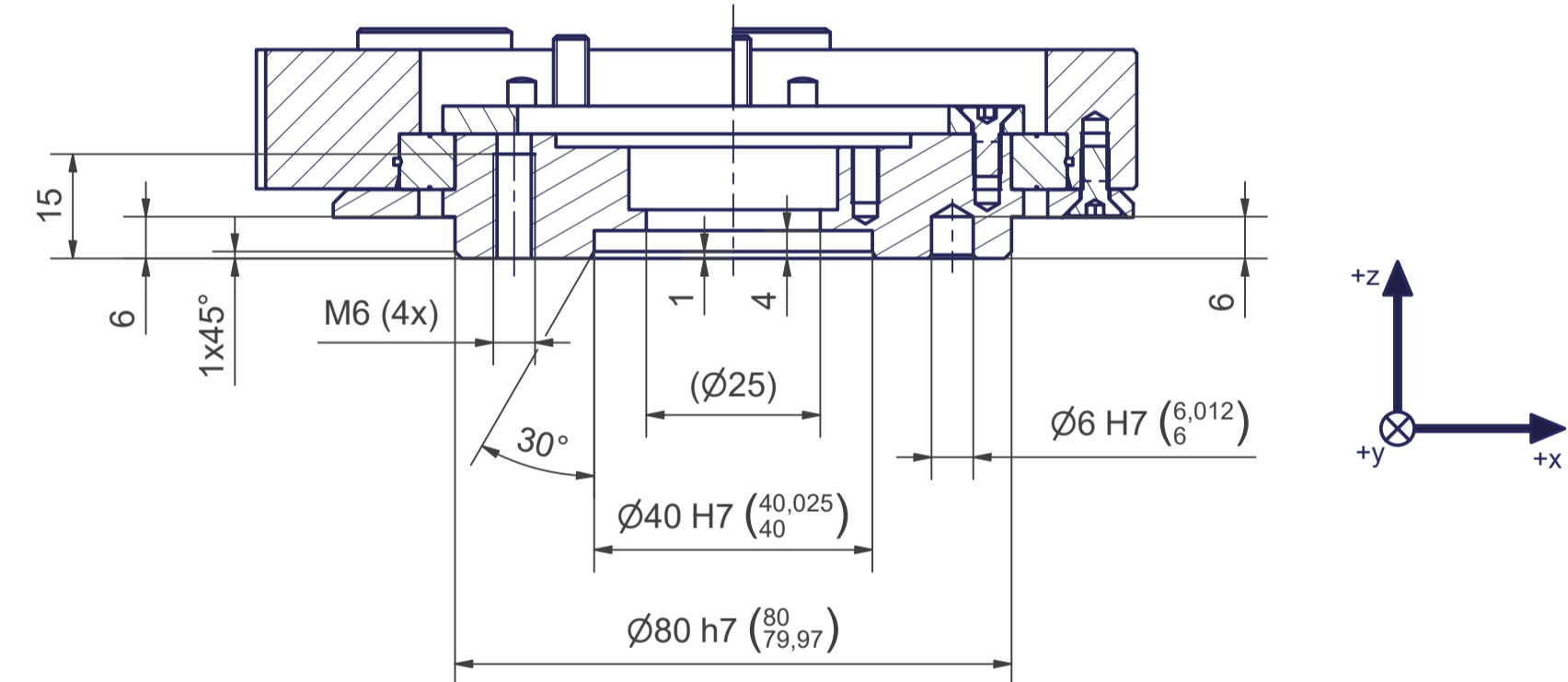
TCP - working range

Flange diagram according to
ISO 9409-1-63-4-M6

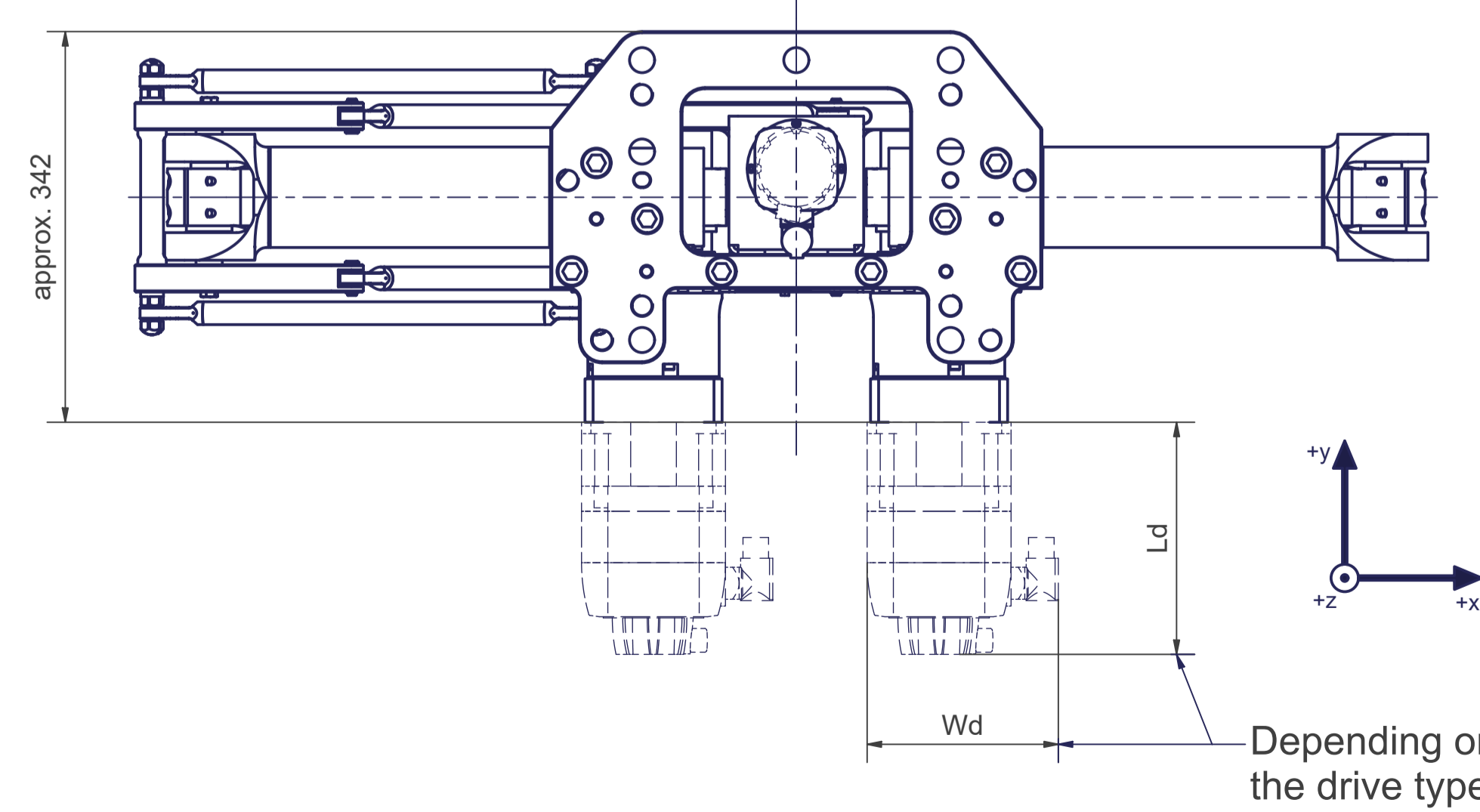
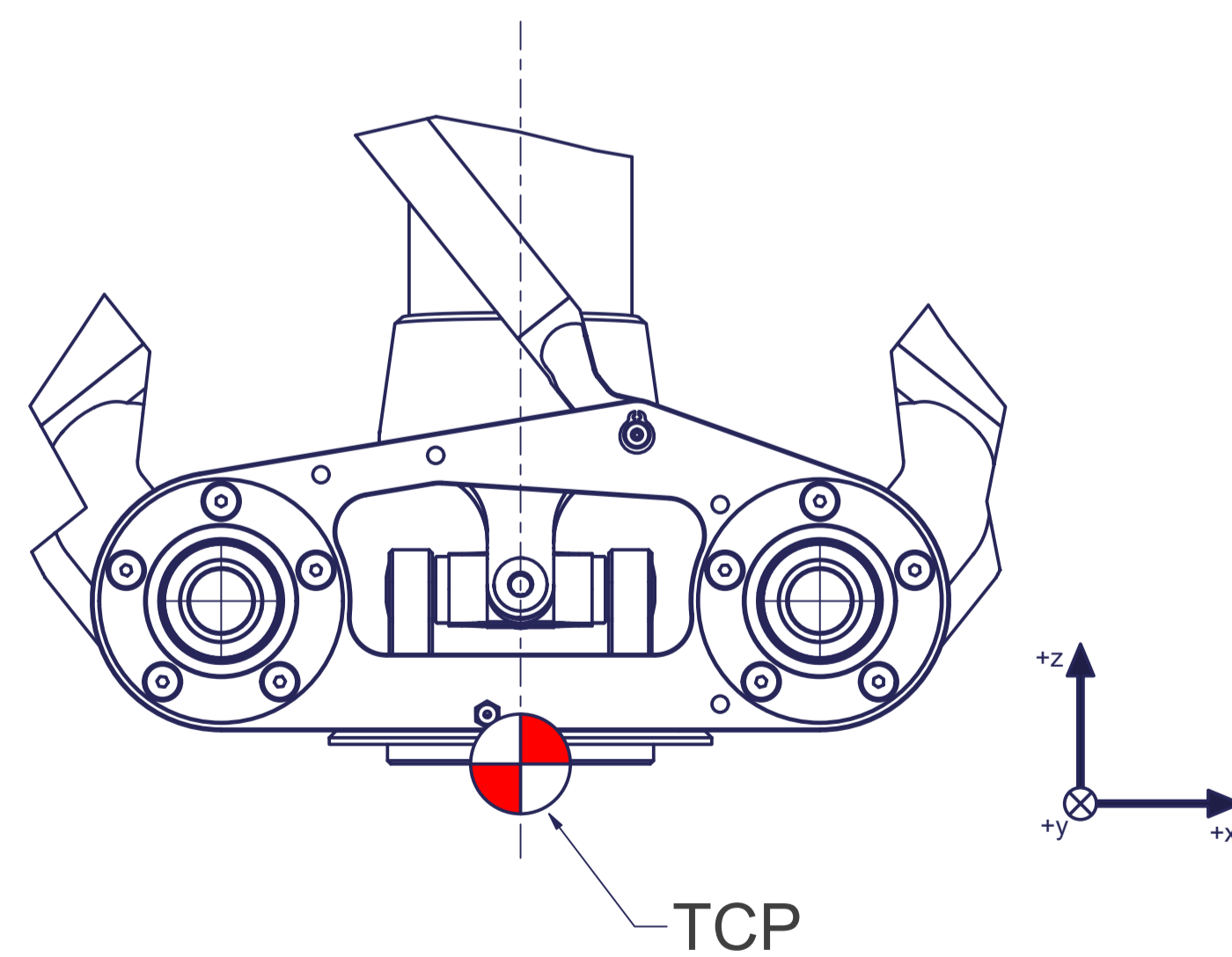
A (1:1)



B-B



Z (1:2)



Depending on the drive type

Connecting dimensions,
valid for article number A_00921.01

m= kg	A	p= bar
proj. storage surface = m ²		\dot{V} = l/min
First angle projection	P= kW	U= V / Hz / Ph
	U= V / Hz / Ph	I _{max} = A
	I _{max} = A	



A_00921.01

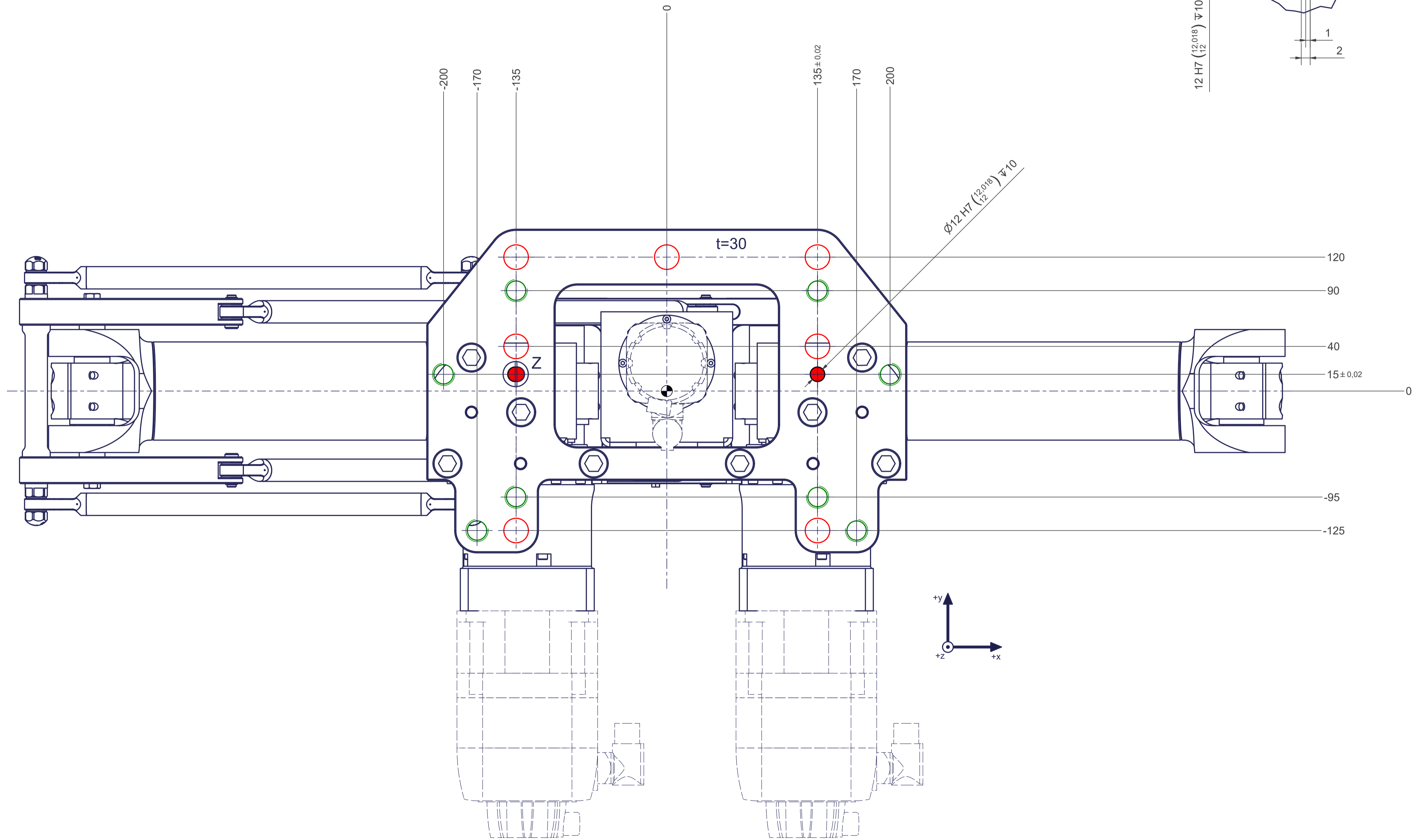
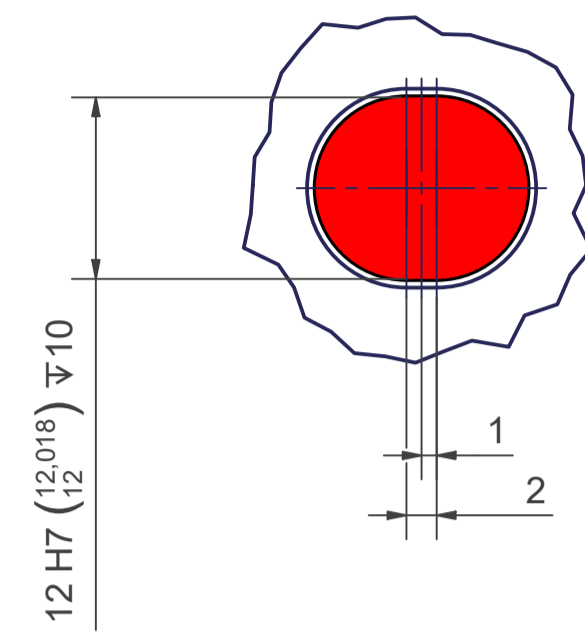
12 11 10 9 8 7 6 5 4 3 2 1

○ All fastening holes Ø22 for screws M20 (DIN ISO 4014/4017 -8.8) without washers. Fastening holes are coloured red.

● Drilling holes for locating pins are filled red. Recommended dimensions of locating pins: Ø12 h6 ($\begin{smallmatrix} 12 \\ 11,989 \end{smallmatrix}$)

○ Thread holes for screws M20 are coloured green. The tightening torque for these screws (strenght class 8.8) is 170 Nm.

Z (2:1)



Ø12 H7 ($\begin{smallmatrix} 12,018 \\ 12 \end{smallmatrix}$) ±0.10

12 11 10 9 8 7 6 5 4 3 2 1