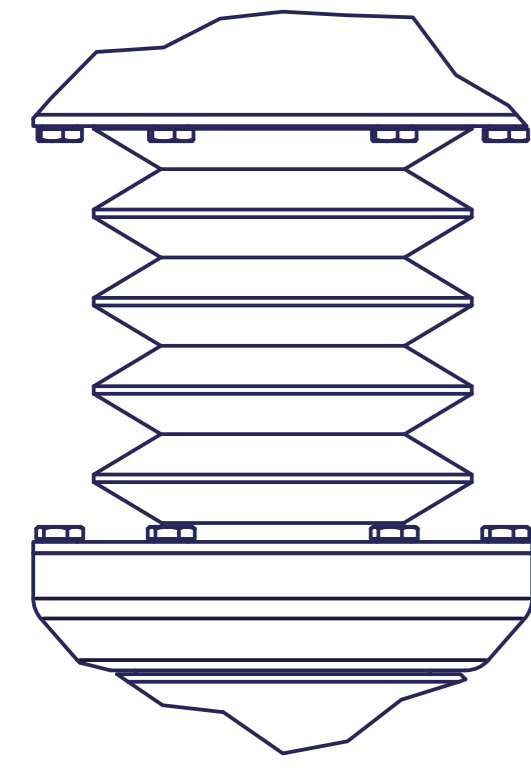
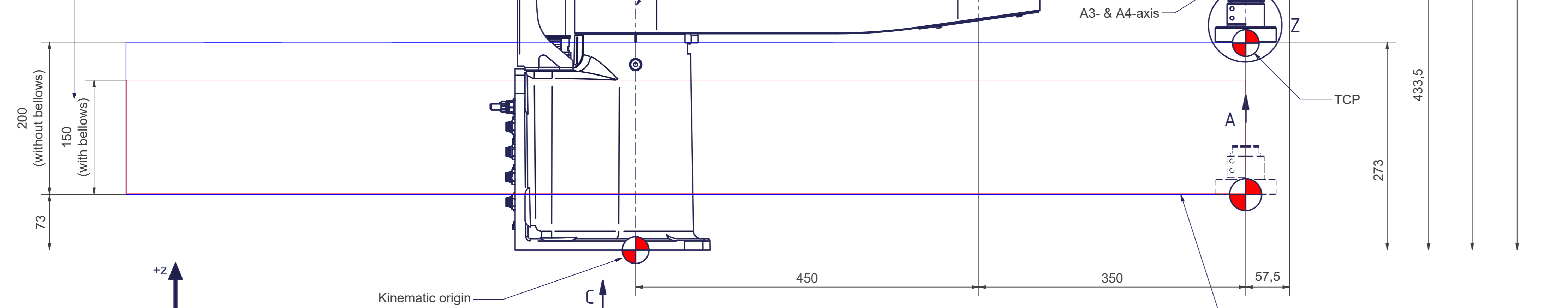


A minimum distance of 100mm between the cable harness and any (machine)parts is recommended to avoid any collision

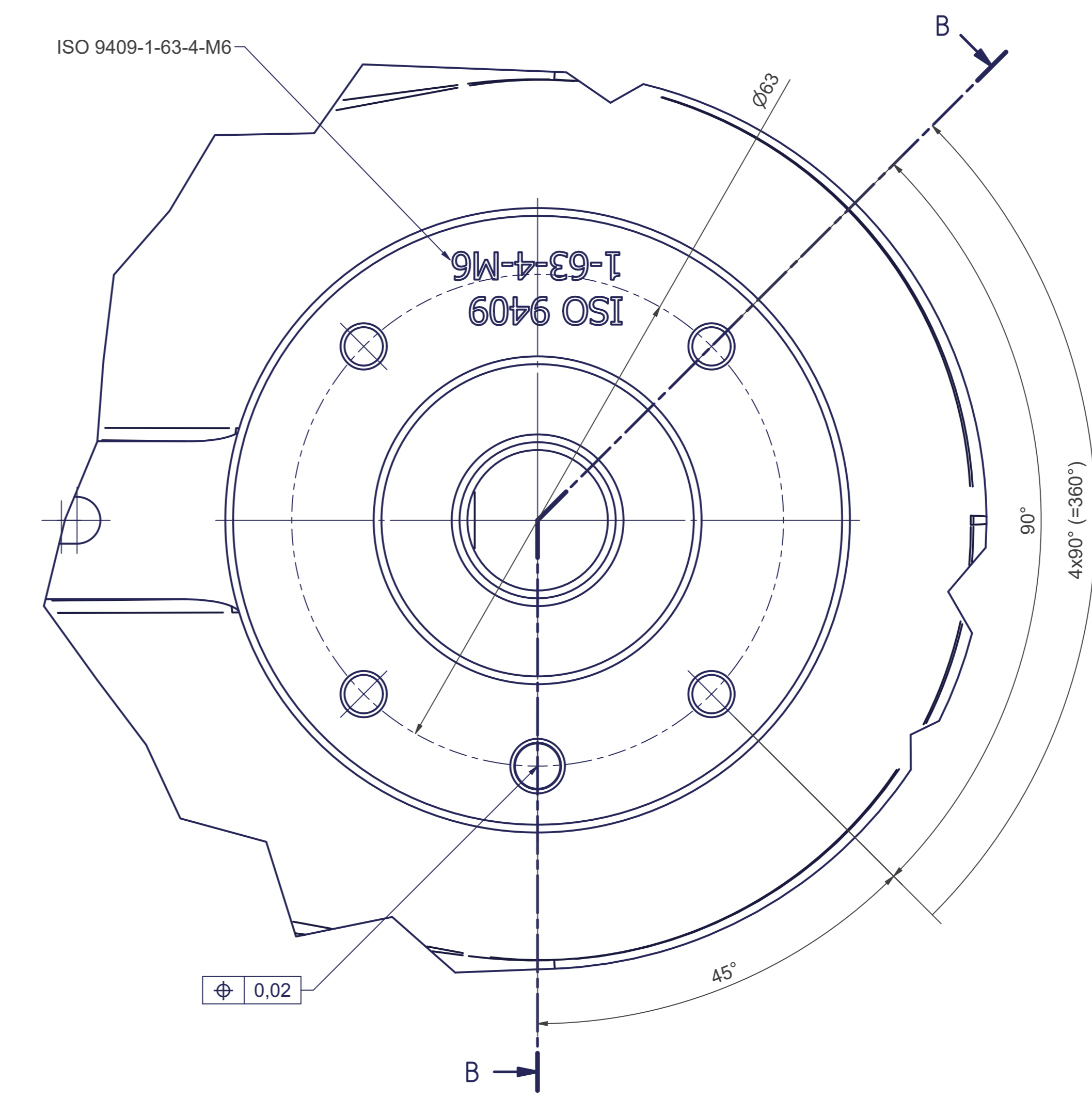
Optional Bellows (1:1)



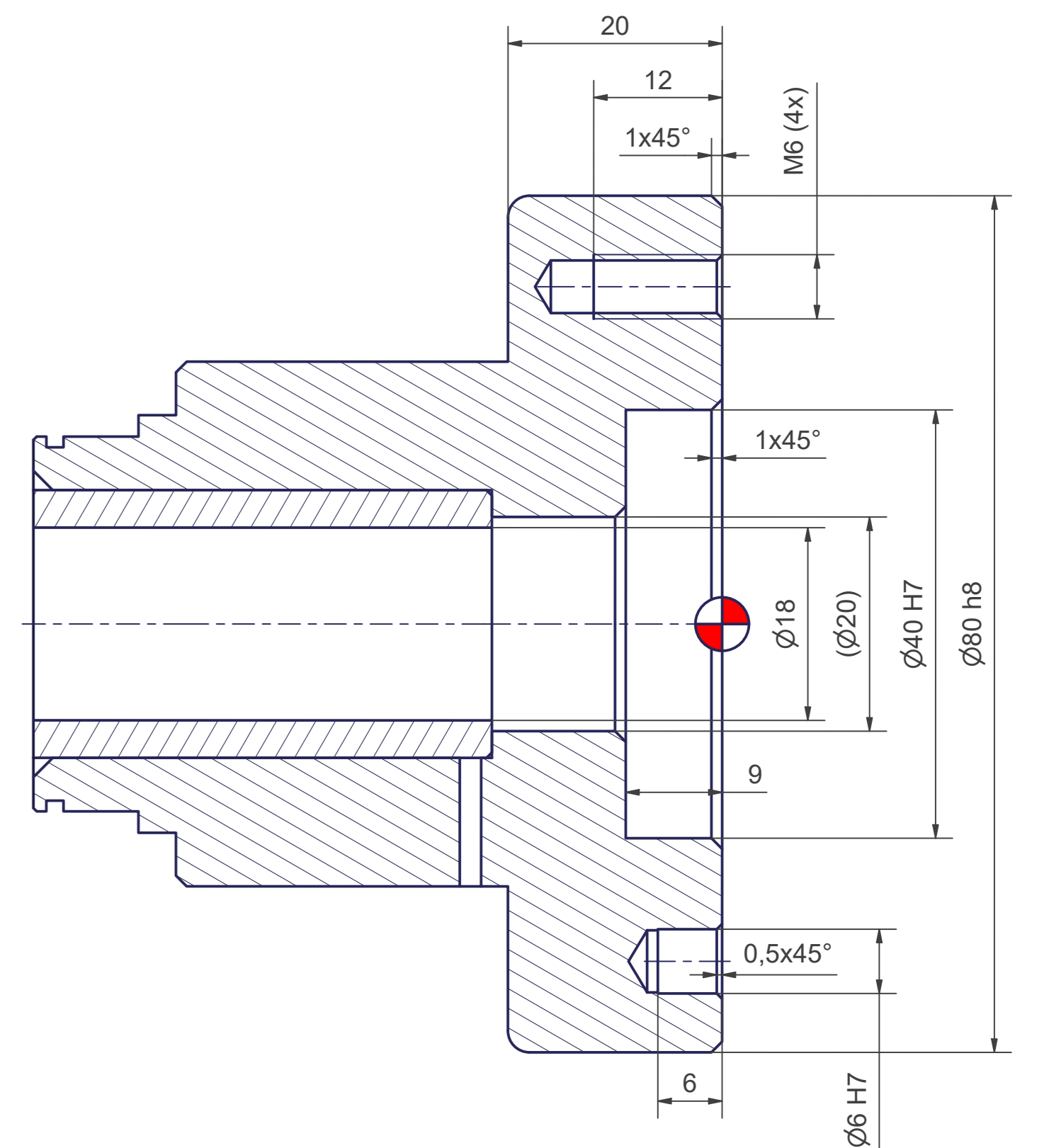
TCP - working range when using optional Bellows (MT\_BGR00104375)



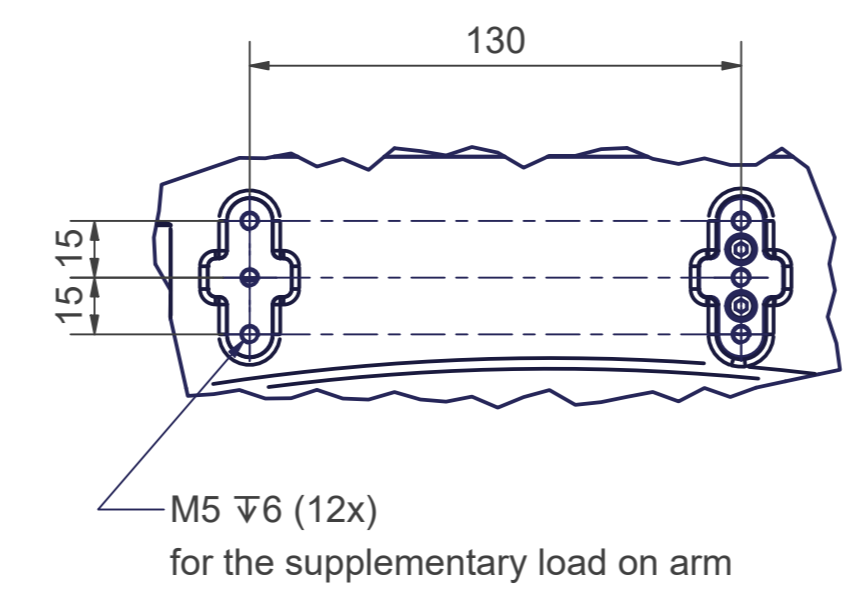
A (2:1)  
Tool mounting flange



B-B

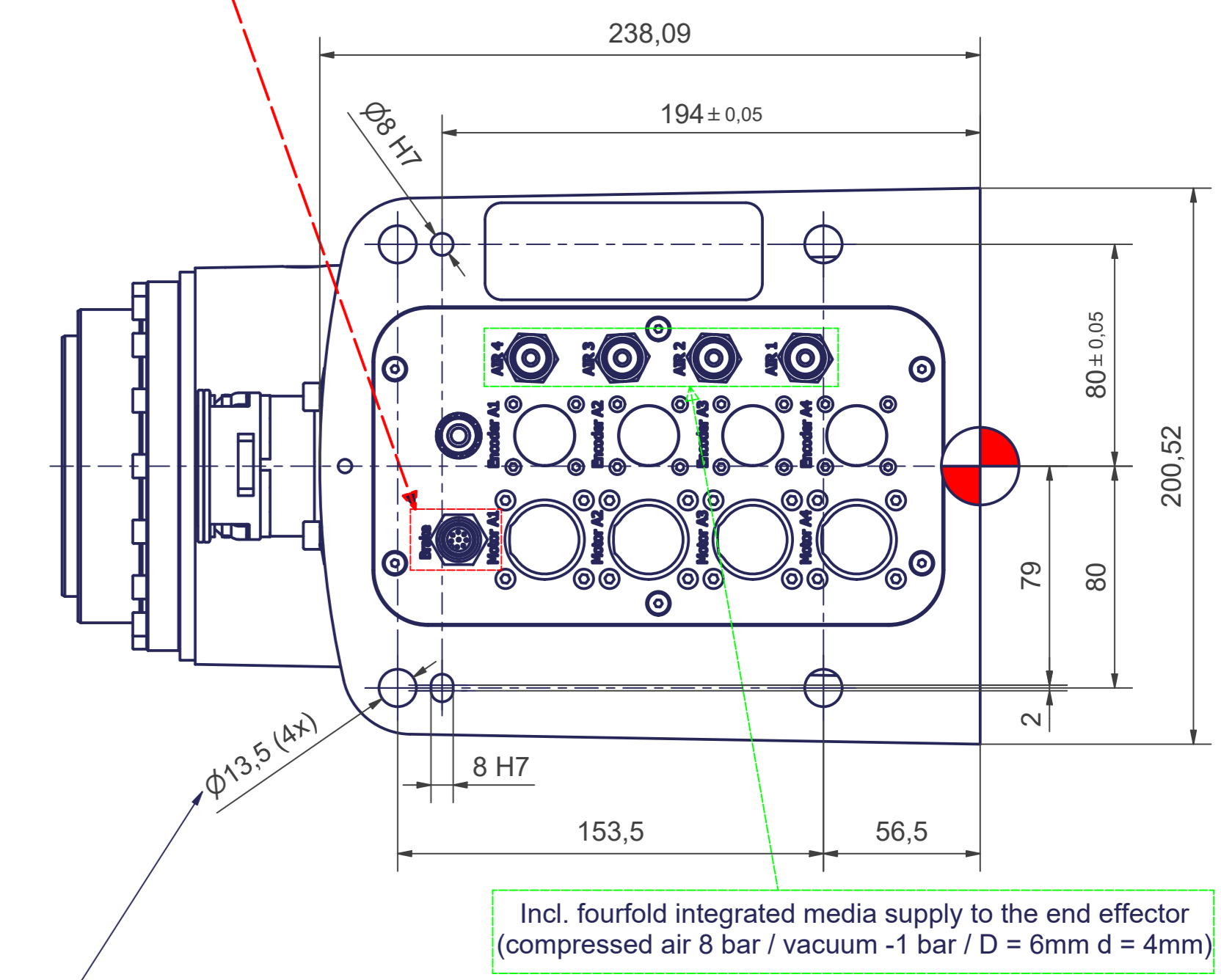
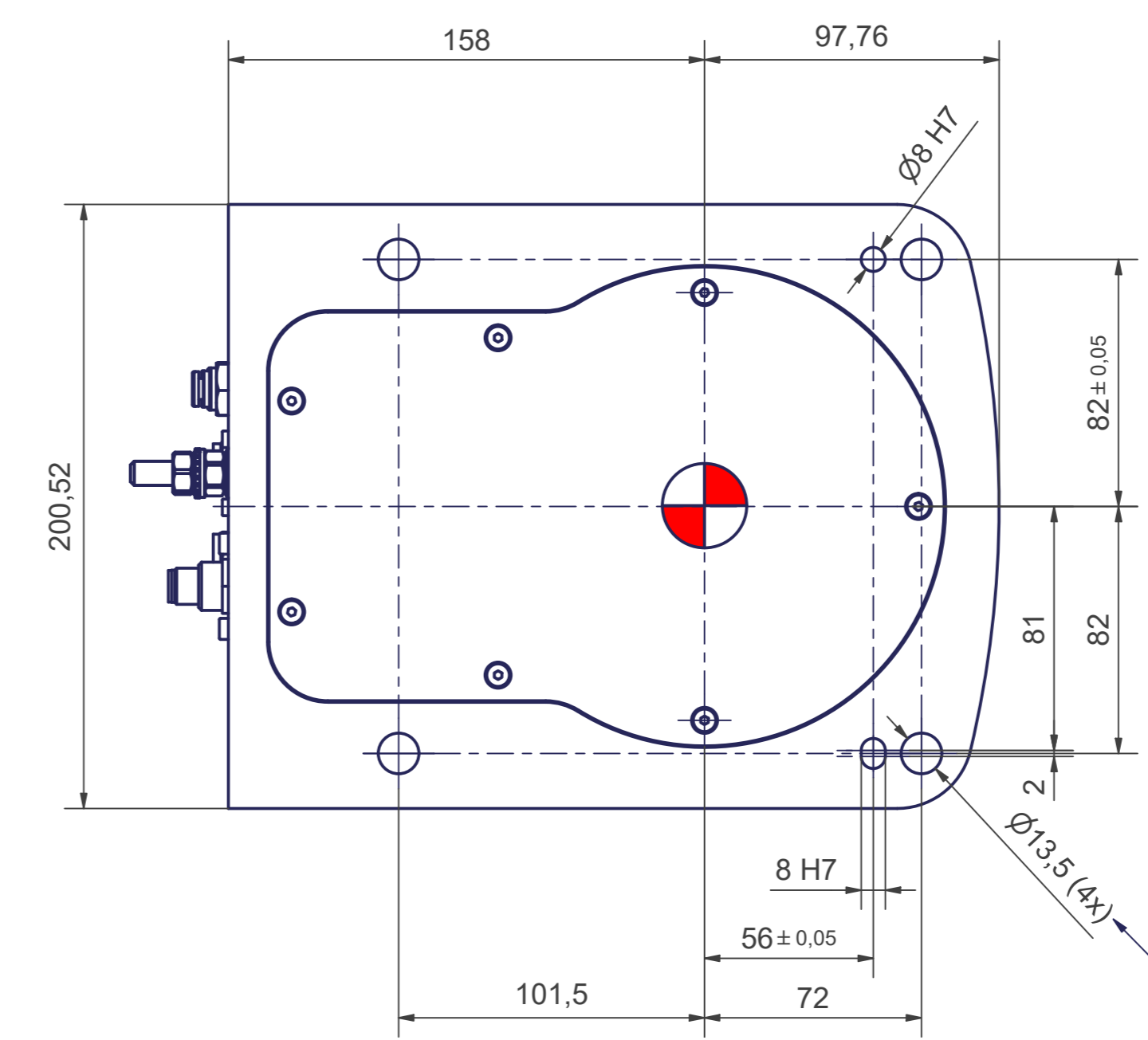


Y (1:2)



| PIN assignment by autonox Robotics |               |                |
|------------------------------------|---------------|----------------|
| PIN number                         | Connection to | M12 8-pin male |
| 1                                  | Push button   |                |
| 2                                  | Push button   |                |
| 3 to 8                             | Not connected |                |

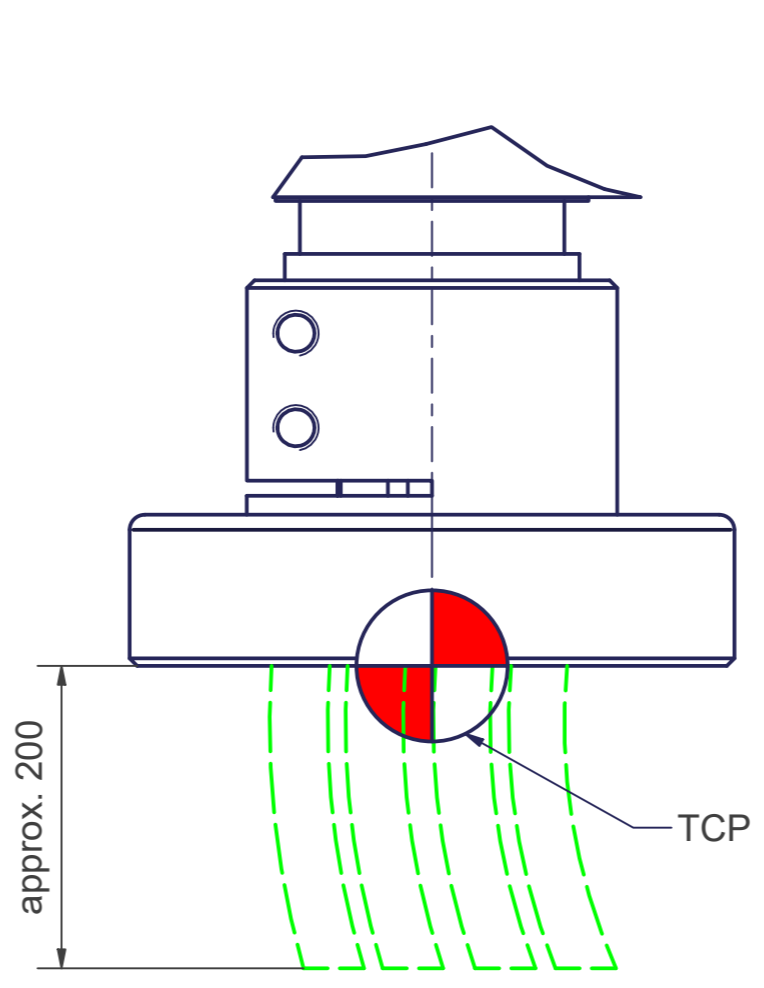
C (1:2)  
Base Frame



Incl. fourfold integrated media supply to the end effector (compressed air 8 bar / vacuum -1 bar / D = 6mm d = 4mm)

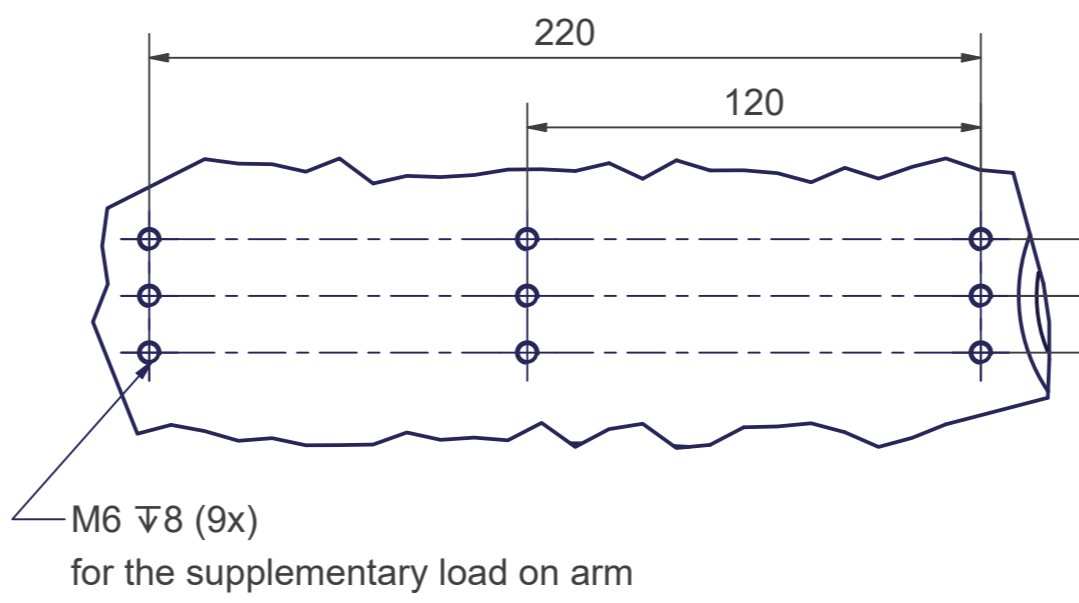
Push button, for example to be able to release the motor brakes (details for connection see table "PIN assignment")

Z (1:1)



Incl. fourfold integrated media supply to the end effector (compressed air 8 bar / vacuum -1 bar / D = 6mm d = 4mm)

X (1:2)



M6 T8 (9x) for the supplementary load on arm

for screws M12 (DIN ISO 4014/4017-8.8) the tightening torque for these screws is 83 Nm (in steel frame).

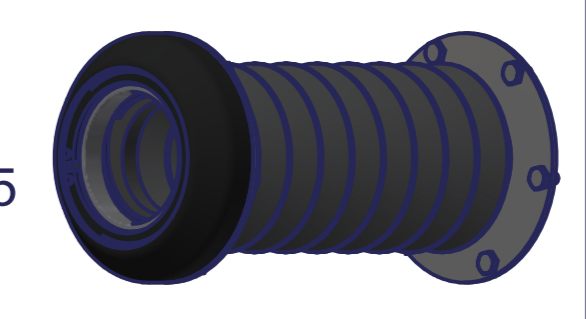
| sCara4-800-6kg    |                      | Motion |                    |
|-------------------|----------------------|--------|--------------------|
| Axes              | 4                    | Axes   | Range fully usable |
| Payload (on TCP)  | 6kg                  | A1     | ± 135°             |
| Reach             | 800 mm               | A2     | ± 145°             |
| Mounting position | Floor, ceiling, wall | A3     | + 73 mm / + 273 mm |
|                   |                      | A4     | ± 360°             |

More information can be found in the document "calibration dimensions"

Connecting dimensions, valid for article number: AT\_00024

OPTIONAL:

Bellows MT\_BGR00104375



|                |                  |                         |       |
|----------------|------------------|-------------------------|-------|
| kg             | kg               | A                       | bar   |
| m <sup>2</sup> | m <sup>2</sup>   | P <sub>z</sub>          | l/min |
| U <sub>0</sub> | U <sub>max</sub> | V / Hz / P <sub>8</sub> |       |
|                |                  | A                       |       |

