

m= kg	A	p= bar
proj. storage surface = m²		v= l/min
First angle projection		
	P= kW	
	U= V / Hz / Ph	
	I <sub>max</sub> = A	

**autonox**  
lean line

Connecting dimensions,  
valid for article number AL\_10005

12

11

10

9

8

7

6

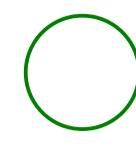
5

4

3

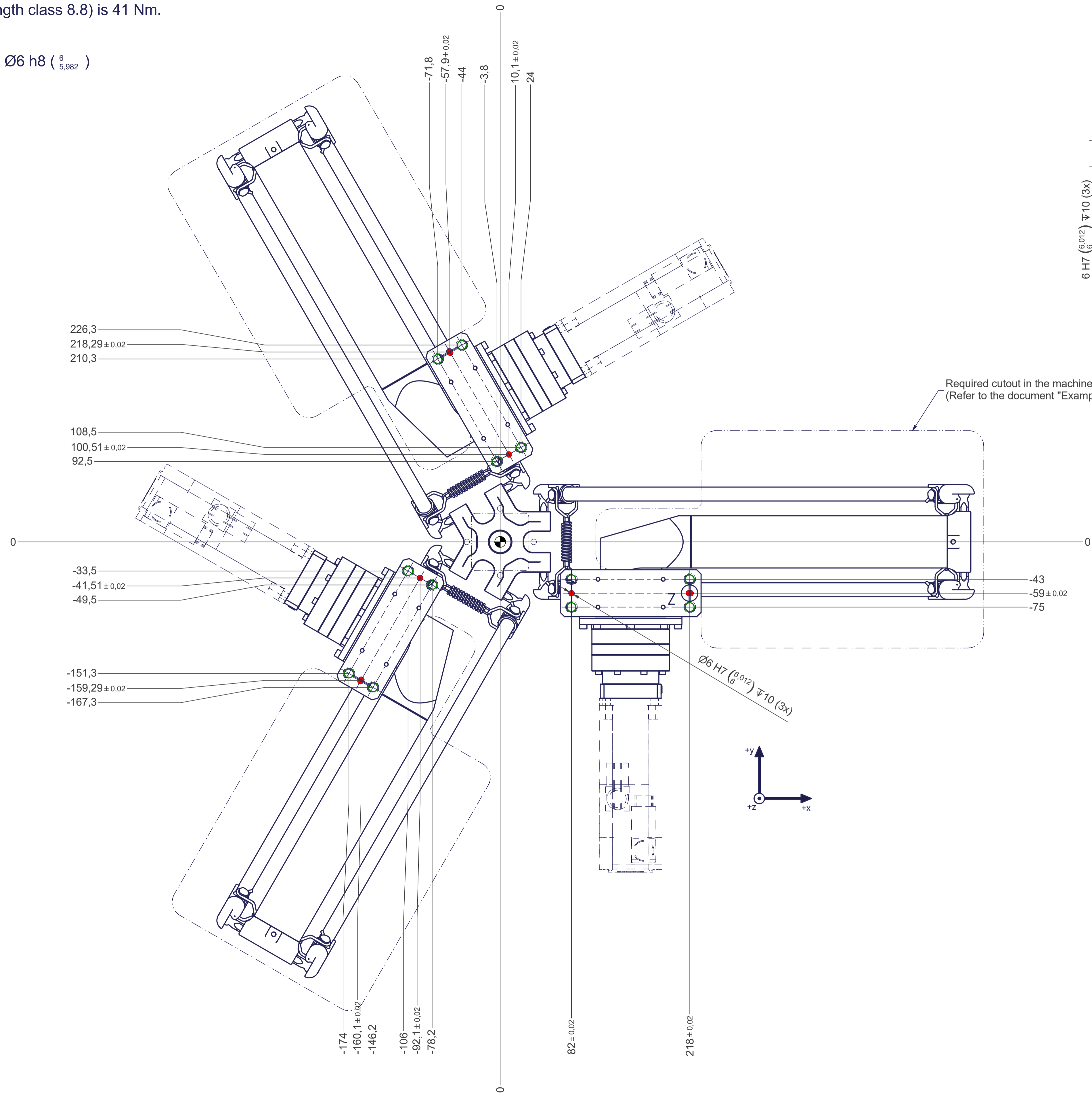
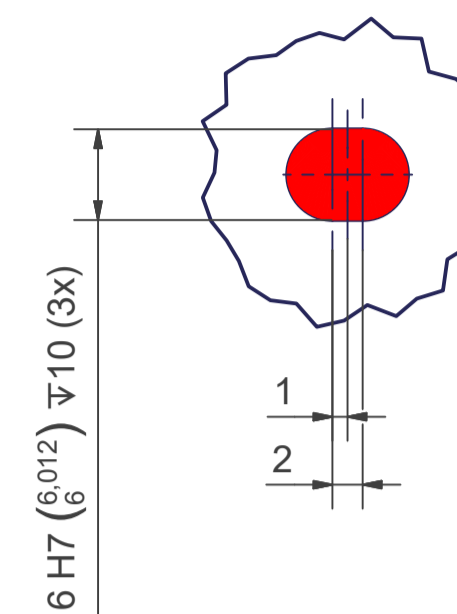
2

1

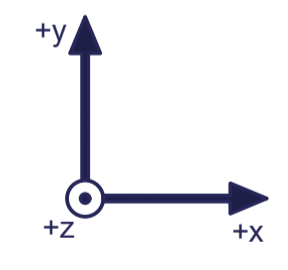
 Thread holes for screws M12 are coloured green.  
The tightening torque for these screws (strength class 8.8) is 41 Nm.

 Drilling holes for location pins are filled red.  
Recommended dimensions for locating pins:  $\text{Ø}6 \text{ h}8 \left( \begin{smallmatrix} 6 \\ 5,982 \end{smallmatrix} \right)$

Z (2:1)



$\text{Ø}6 \text{ H}7 \left( \begin{smallmatrix} 6,012 \\ 6 \end{smallmatrix} \right) \Psi 10 (3x)$



12

11

10

9

8

7

6

5

4

3

2

1