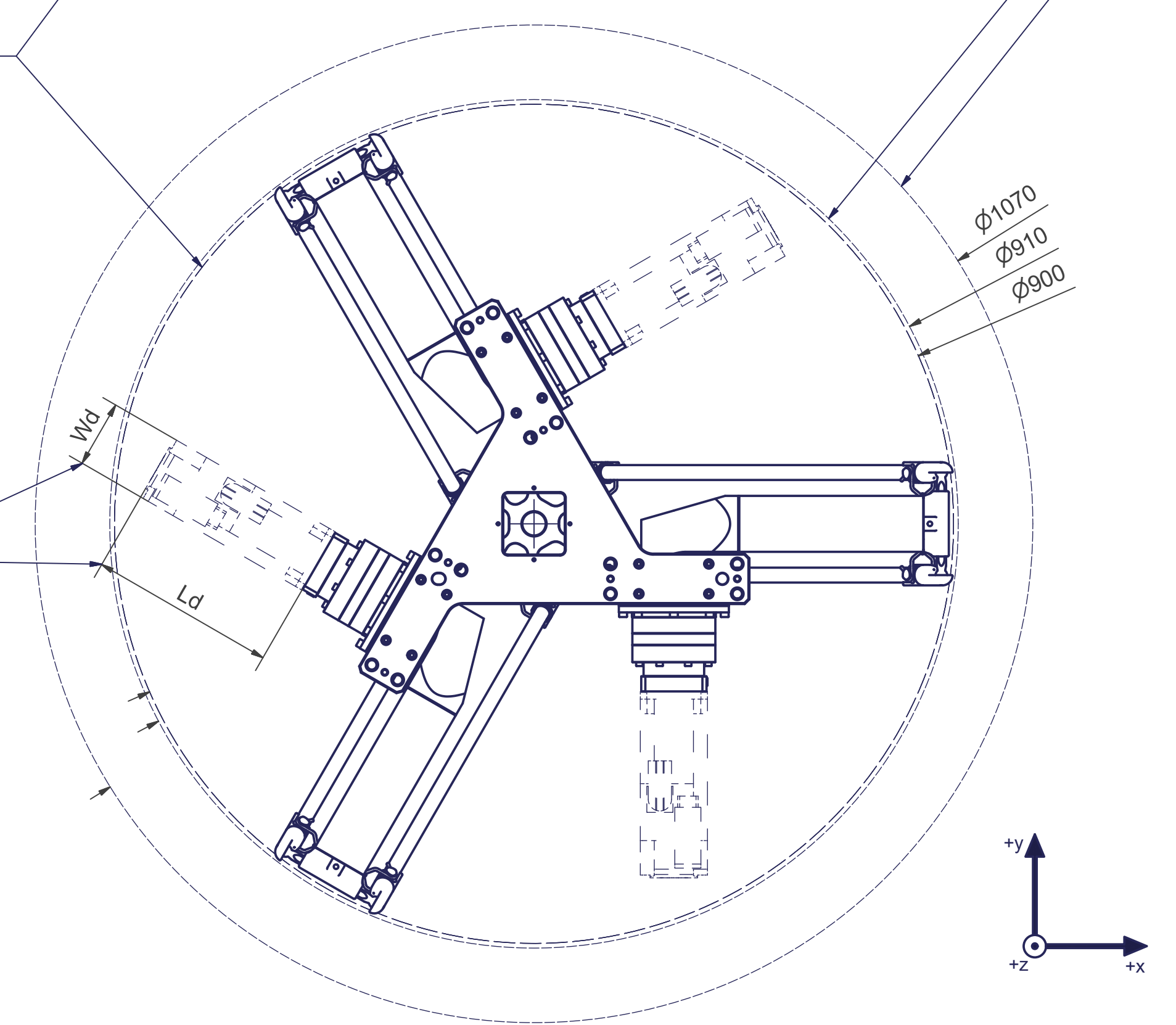


Tool Center Point  
TCP (on the plane of the flange)

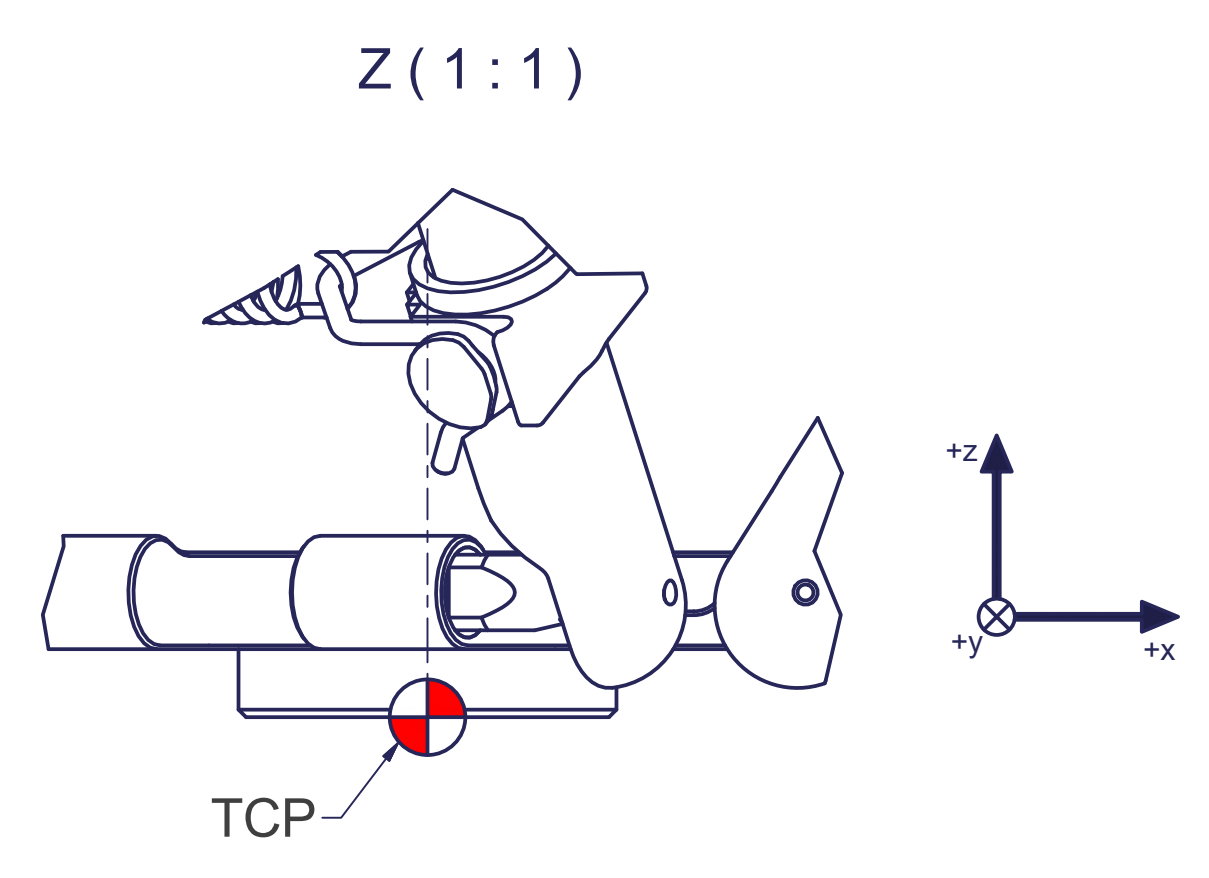
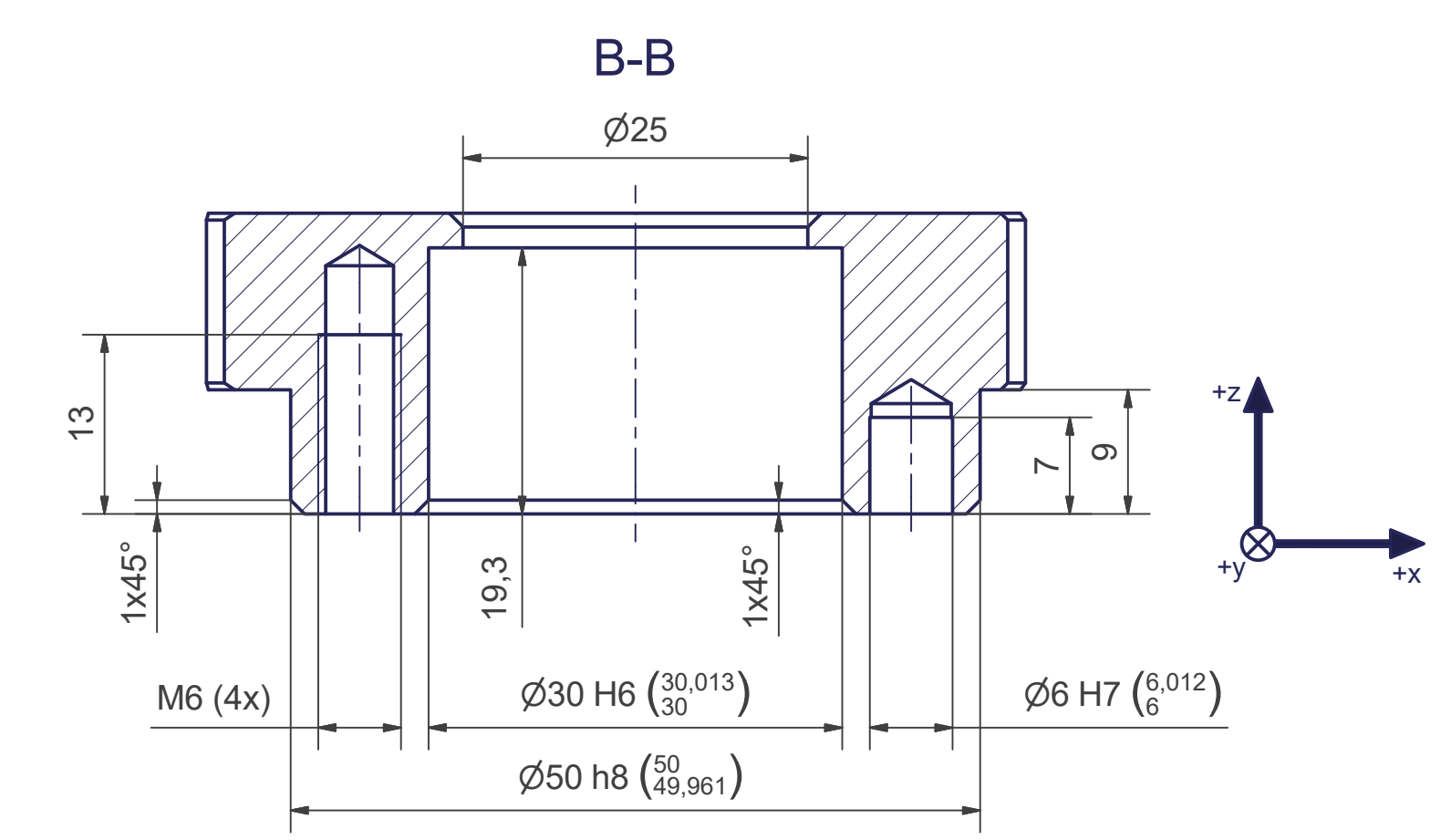
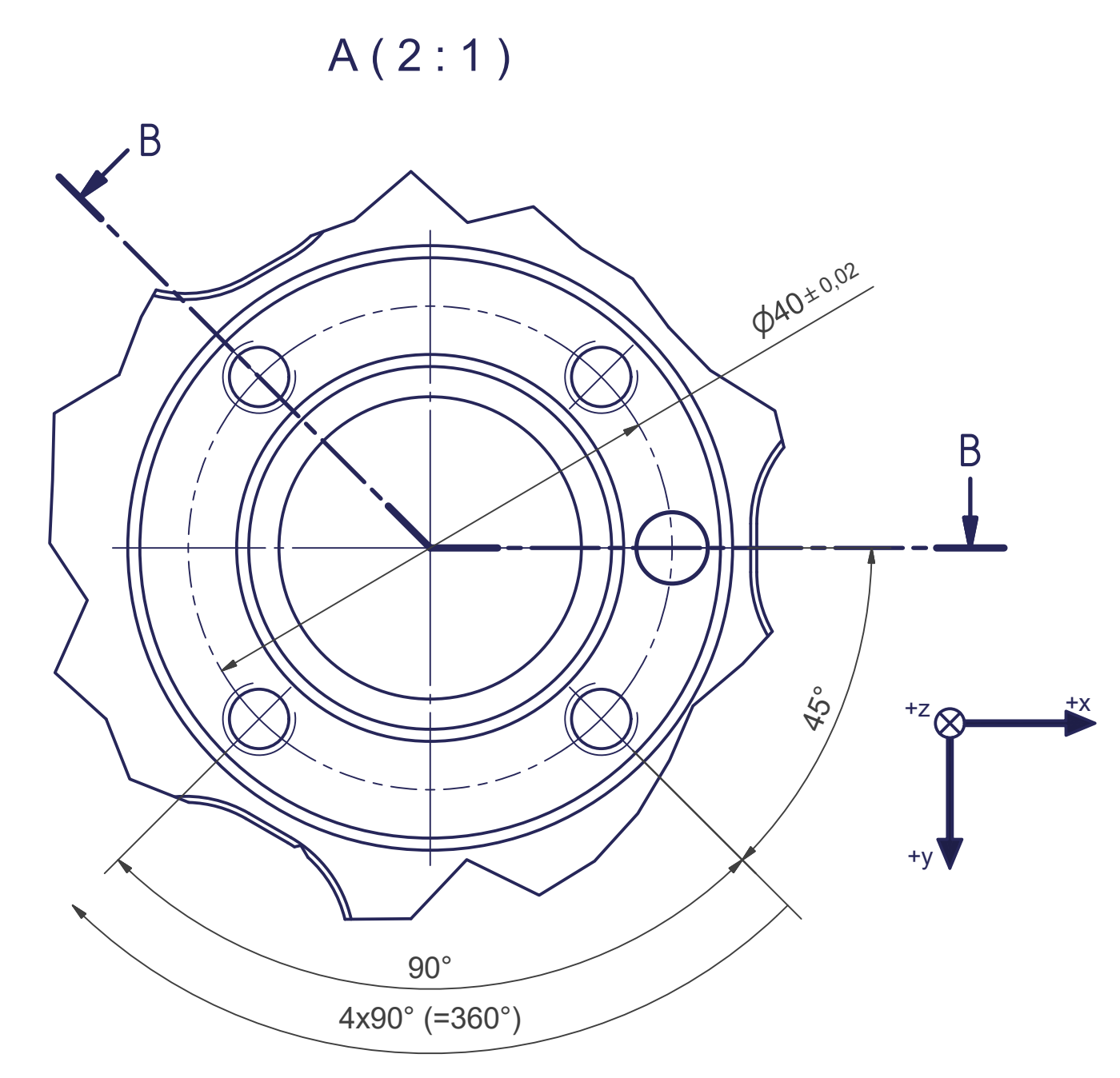
TCP - working range

Depending on  
the drive type



Interference contour  
from machine body

Maximum interference  
contour

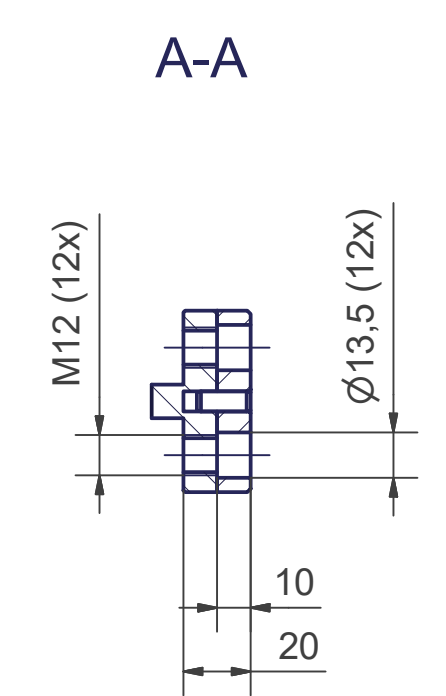
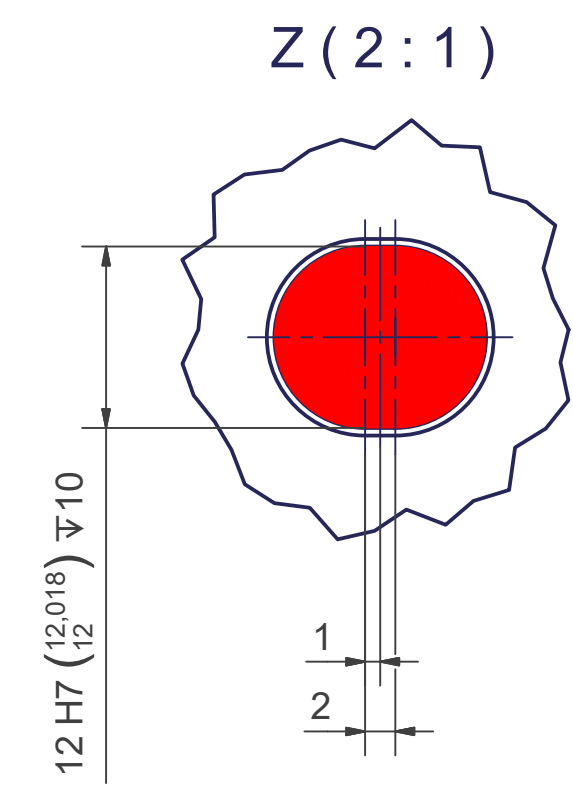
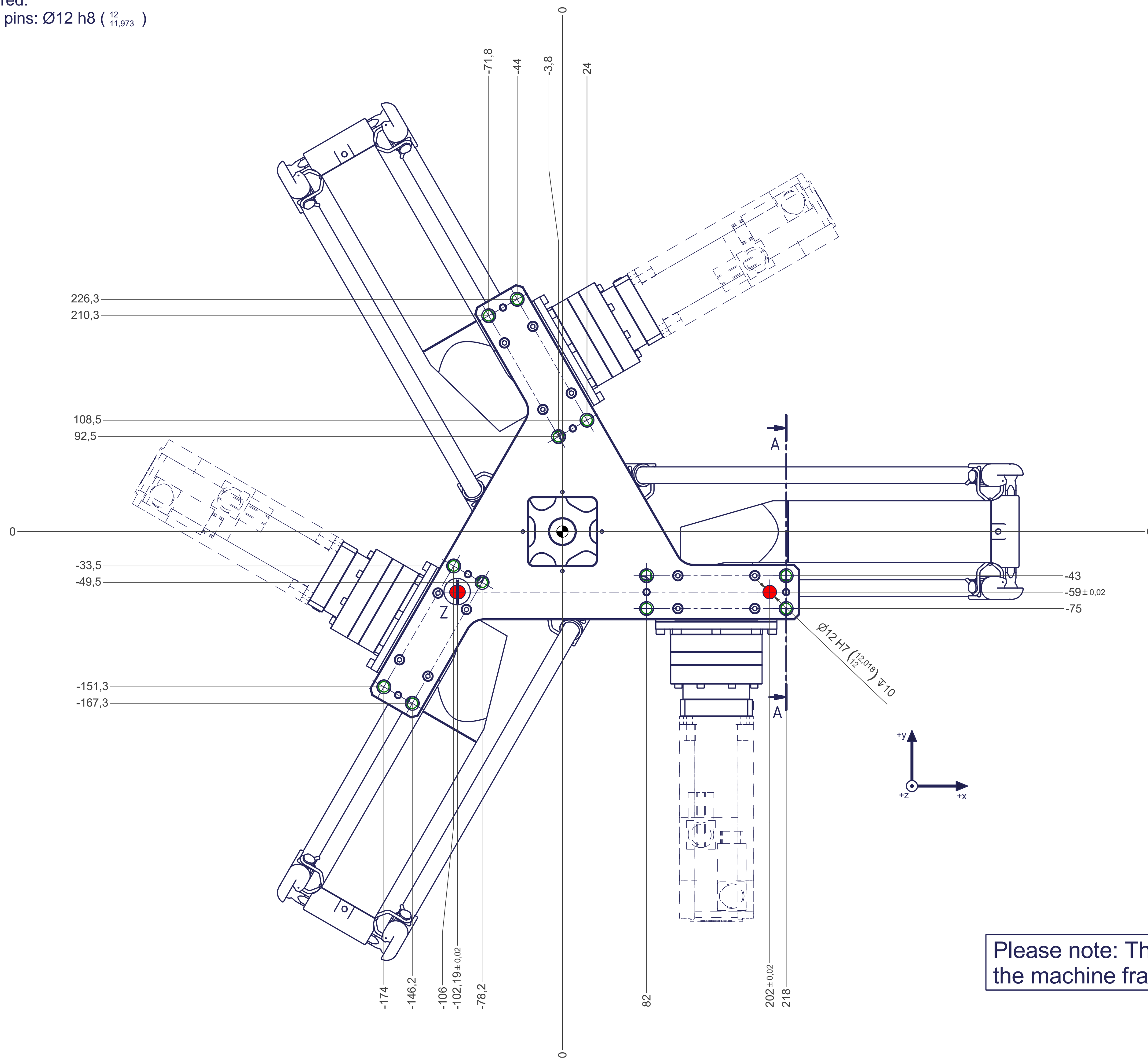


m= kg	A	p= bar
proj. storage surface = m²		v̇= l/min
First angle projection	P= kW	
	U= V / Hz / Ph	
	Imax= A	
		<b>autonox</b> lean line

12 11 10 9 8 7 6 5 4 3 2 1

○ Thread holes for screws M12 are coloured green.  
The tightening torque for these screws (strength class 8.8) is 41 Nm.

● Drilling holes for location pins are filled red.  
Recommended dimensions for locating pins:  $\varnothing 12 \text{ h}8 \left( \begin{smallmatrix} 12 \\ 11,973 \end{smallmatrix} \right)$



Please note: The required flatness of the machine frame interface is 0,1mm.

12 11 10 9 8 7 6 5 4 3 2 1