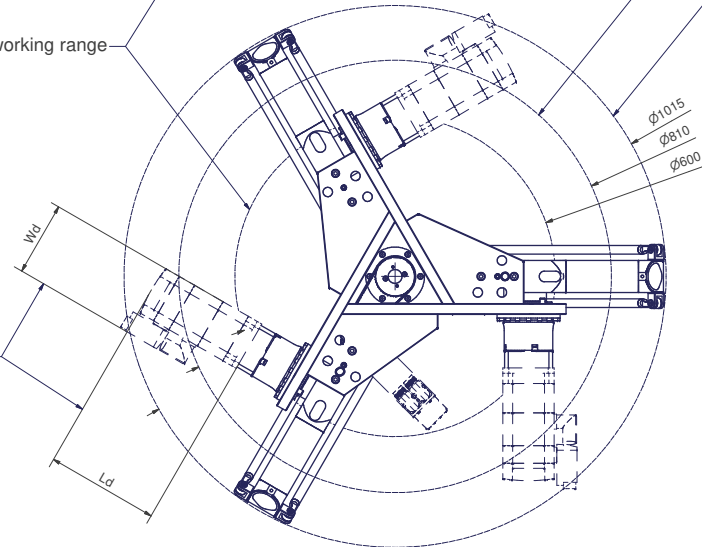


Tool Center Point
TCP (on the plane of the flange)

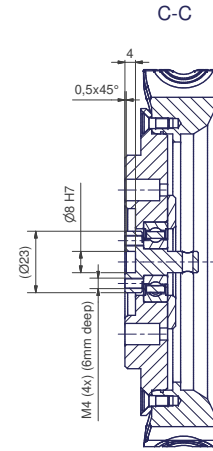
TCP - working range

Depending on
the drive type

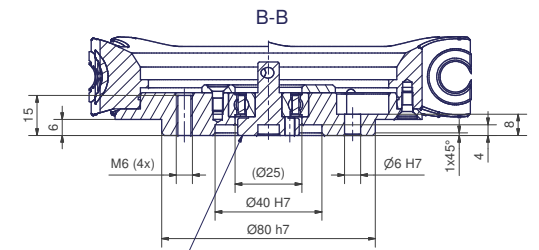
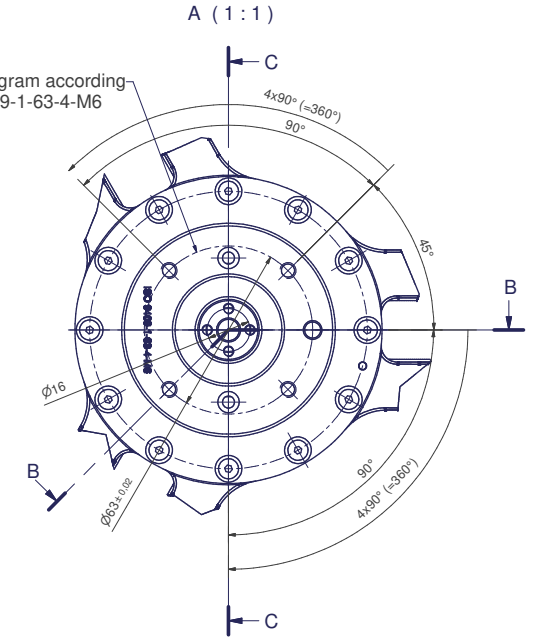


Interference contour
from machine body

Maximum interference
contour

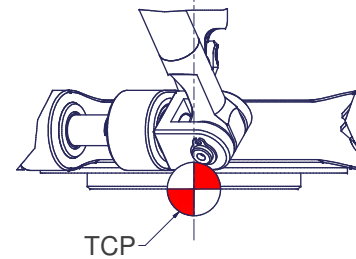


Flange diagram according
to ISO 9409-1-63-4-M6



The T1-rotation has to be beared in the gripper:
there is axial- and tilting clearance in the T1-flange
avoiding overdefined system when mounted on
the gripper.

Z (1:1)



m= kg	A	bar
projected storage surface = m ²	P= kW	\dot{V} = l/min
U= V / Hz / Ph	I _{max} = A	

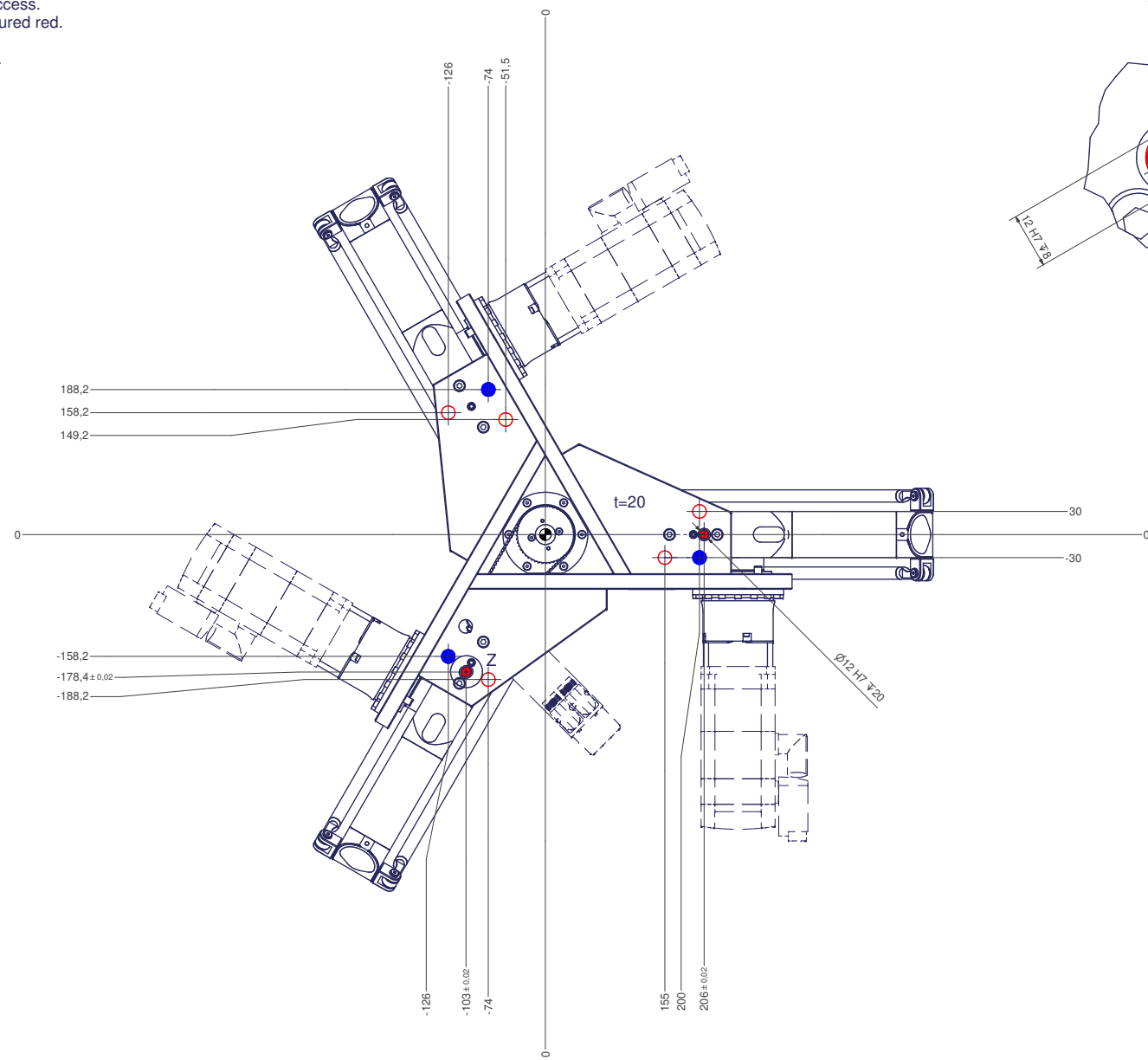
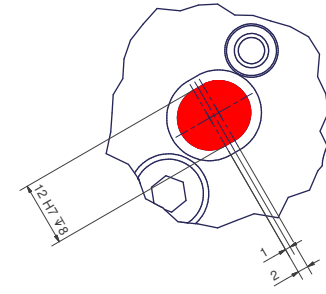
12 11 10 9 8 7 6 5 4 3 2 1

○ All fastening holes $\varnothing 17,5\text{mm}$ for screws M16 (DIN ISO 4014/4017 -8.8) without washer. Fastening holes are coloured red.

● Fastening holes filled blue are difficult to access. We recommend using fastening holes coloured red.

● Drilling holes for locating pins are filled red.

Z (2:1)



12 11 10 9 8 7 6 5 4 3 2 1