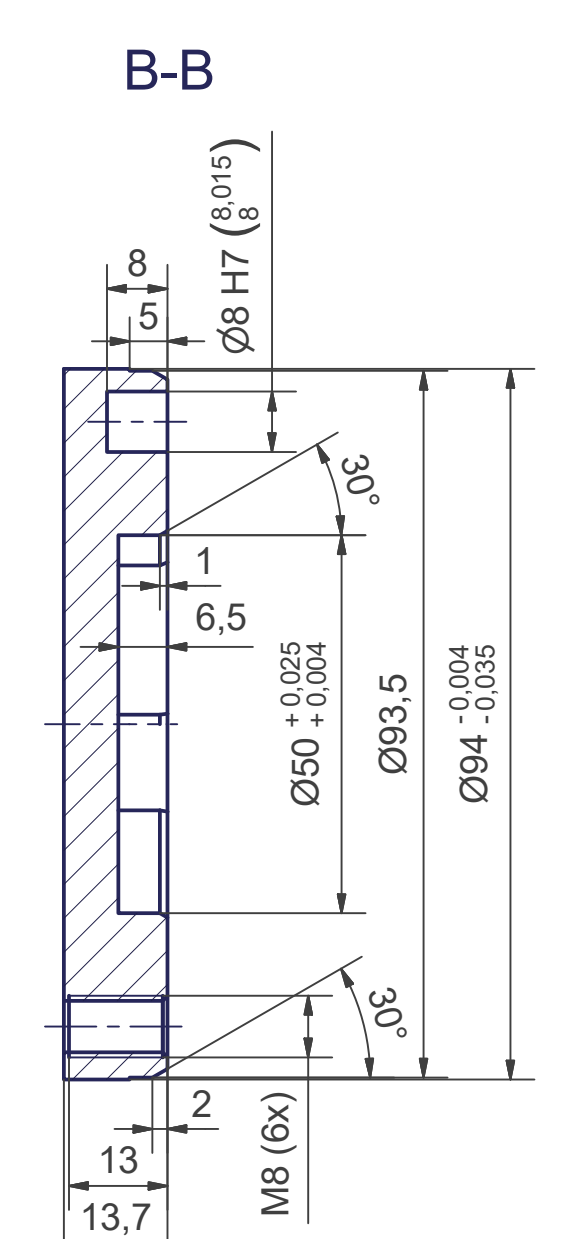
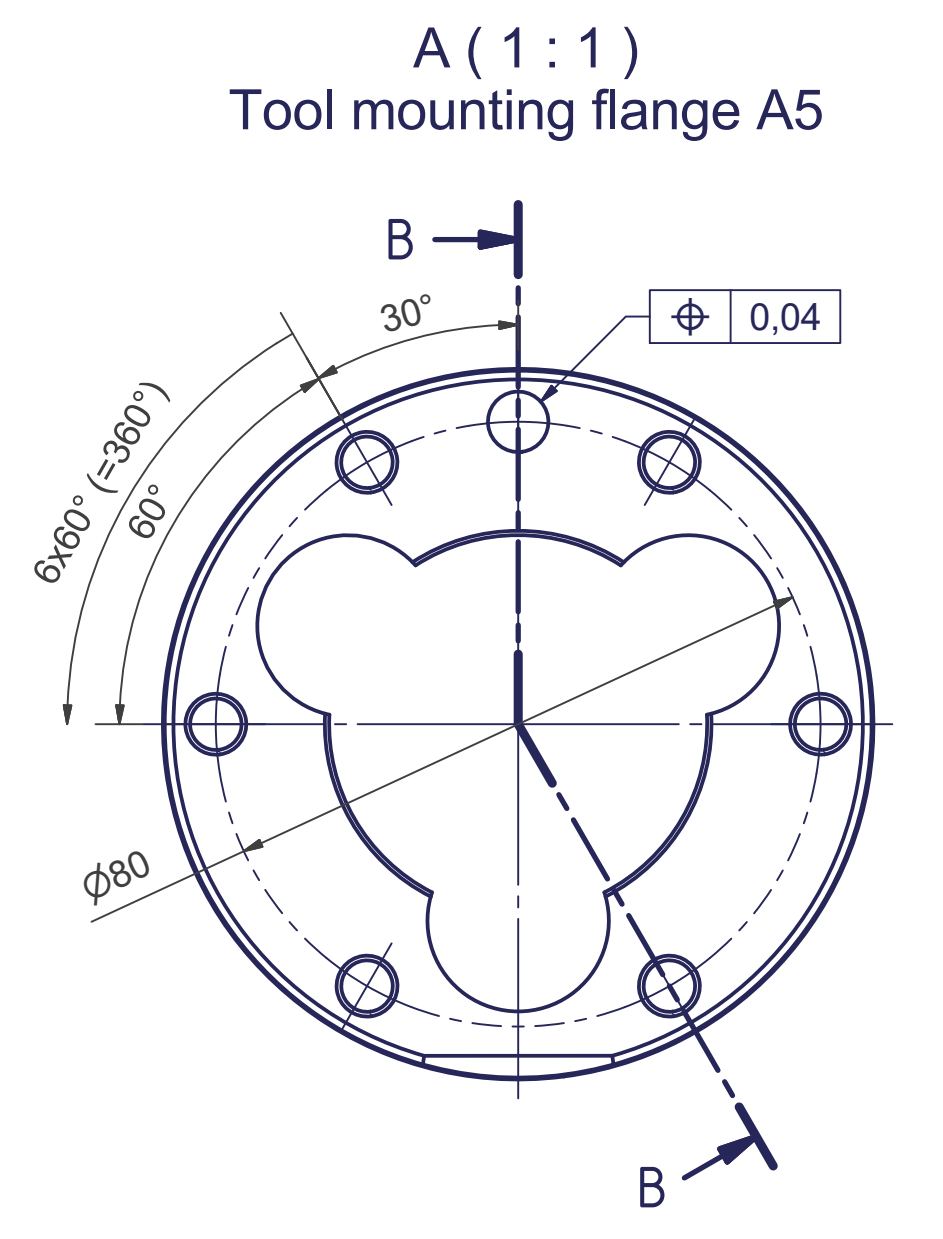
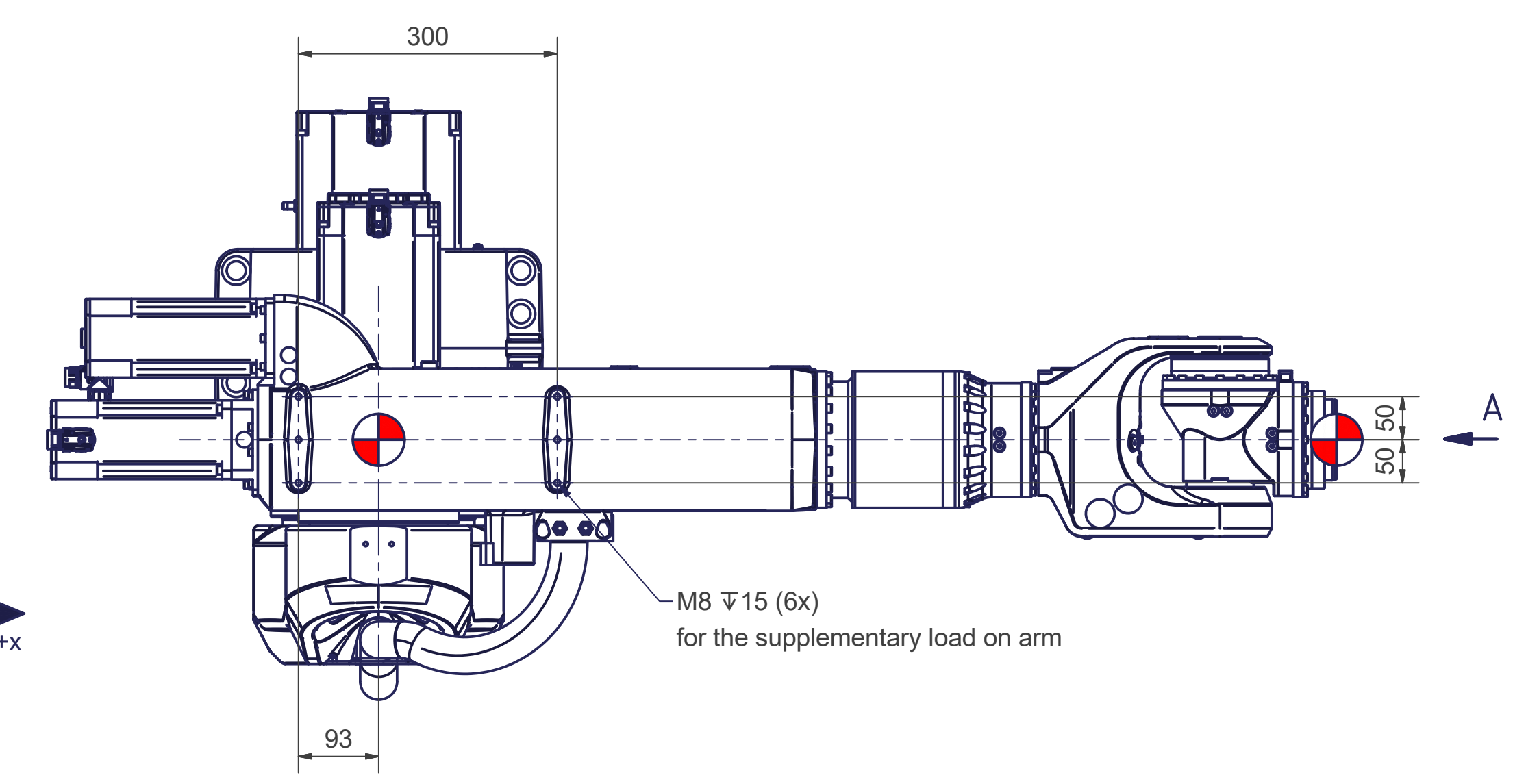


articc5-1918-45kg	
Axes	5
Payload (on TCP)	45 kg
Supplementary load on arm	40 kg
Reach	1918 mm
Mounting position	Angle, Ceiling, Floor, Wall

Motion	
Axes	Range fully usable
A1	$\pm 120^\circ$
A2	$-184^\circ / +67^\circ$
A3	$\pm 360^\circ$
A4	$\pm 120^\circ$
A5	$\pm 360^\circ$

More information can be found in the document "calibration dimensions"

Rev\_02



Connecting dimensions, valid for article number: AT_10010				
kg	$\equiv$			
m=	kg	$\equiv$	A	$\equiv$ bar
proj. storage surface =	m <sup>2</sup>			$\equiv$ l/min
First angle projection		$\equiv$		
kw				
V / Hz / Ph				
A				