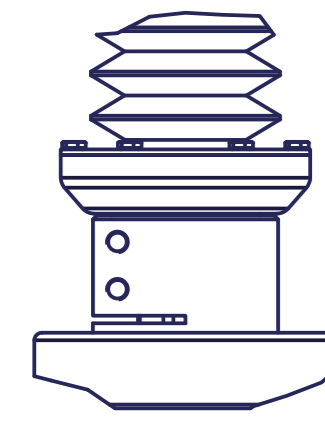
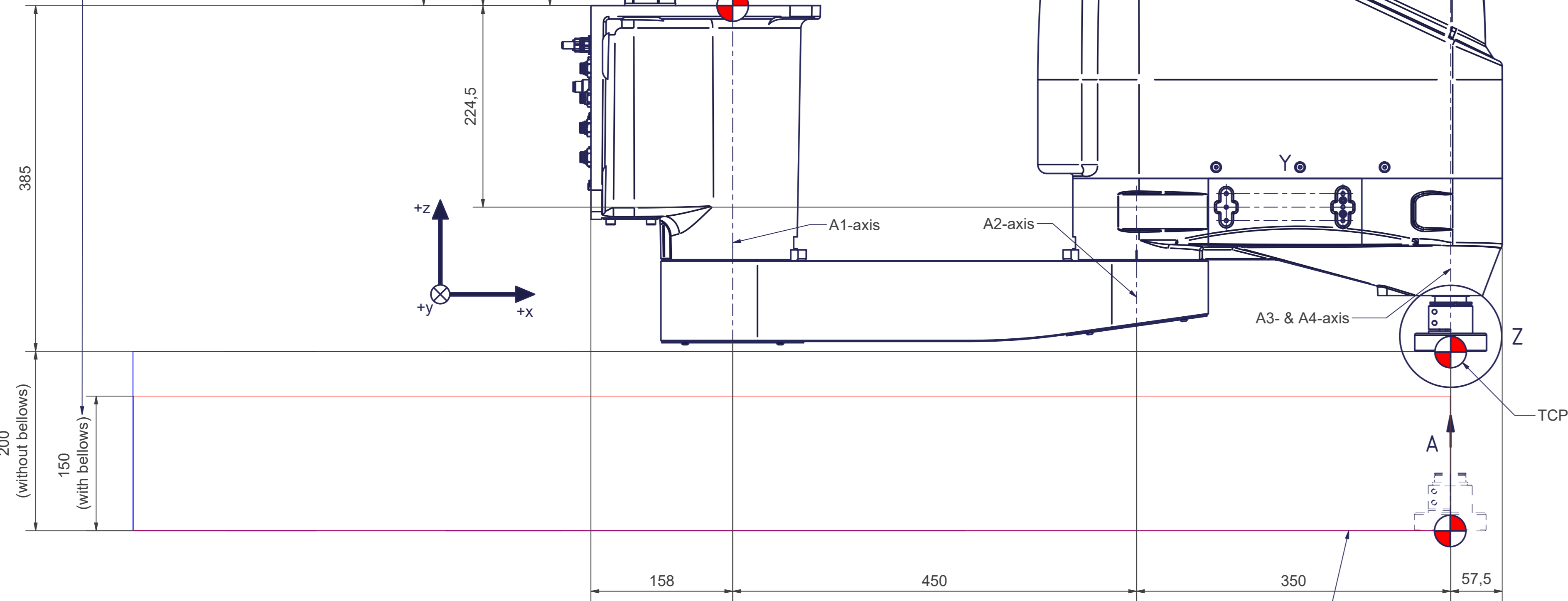


Optional Bellows (1 : 2)

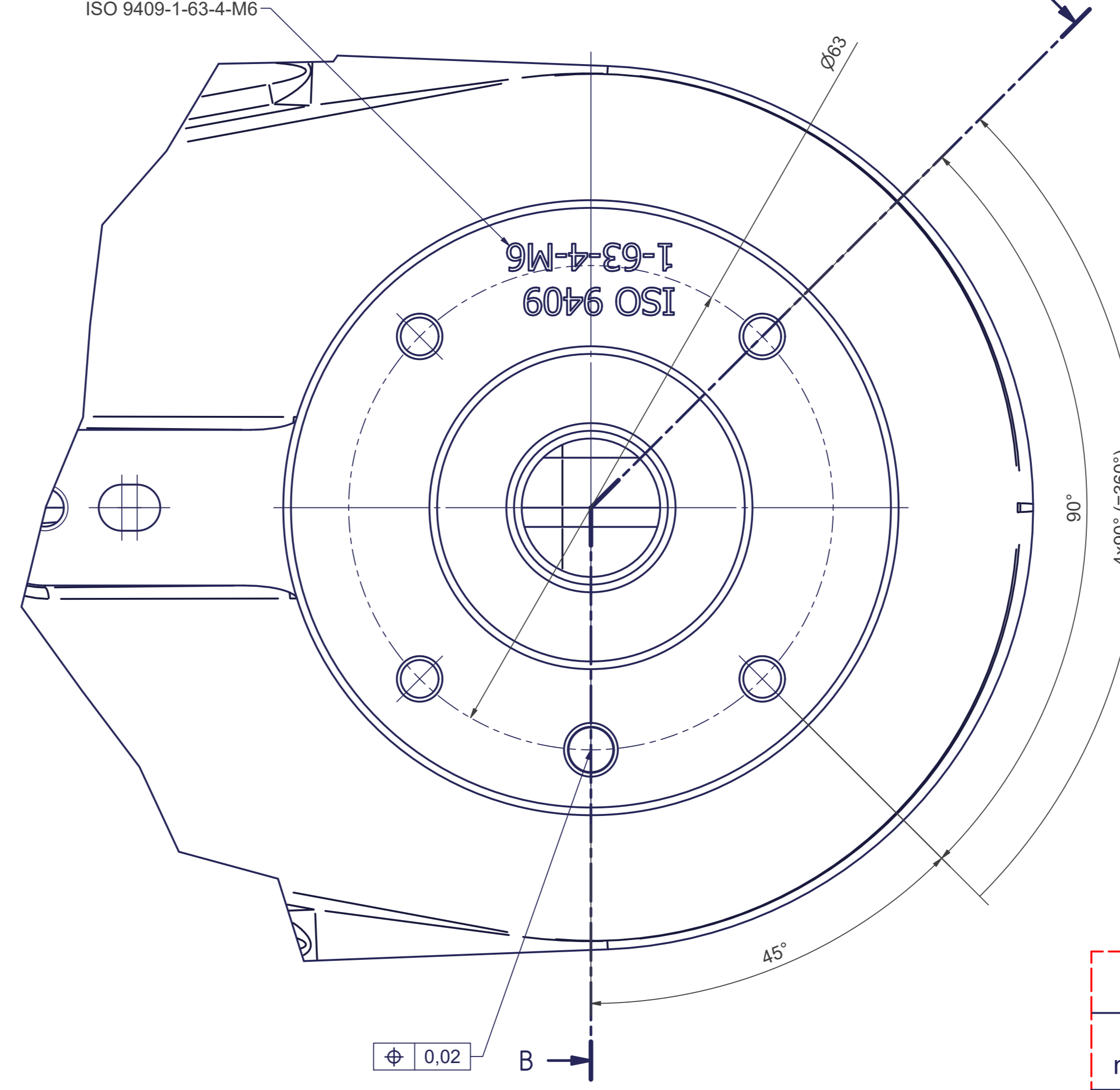


TCP - working range when using optional Bellows (MT_BGR00104375)

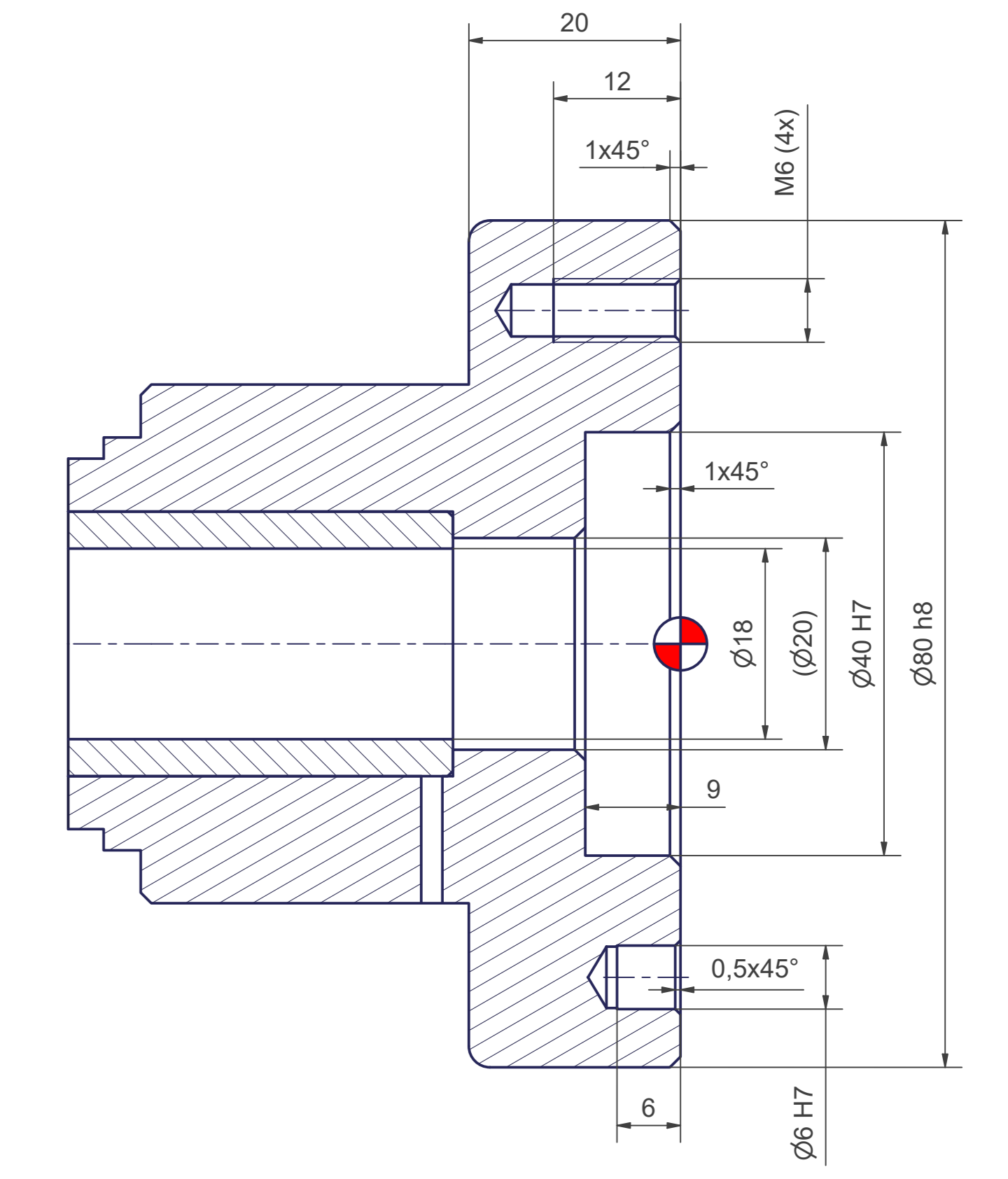


A minimum distance of 100mm between the cable harness and any (machine)parts is recommended to avoid any collision

A (2 : 1)
Tool mounting flange



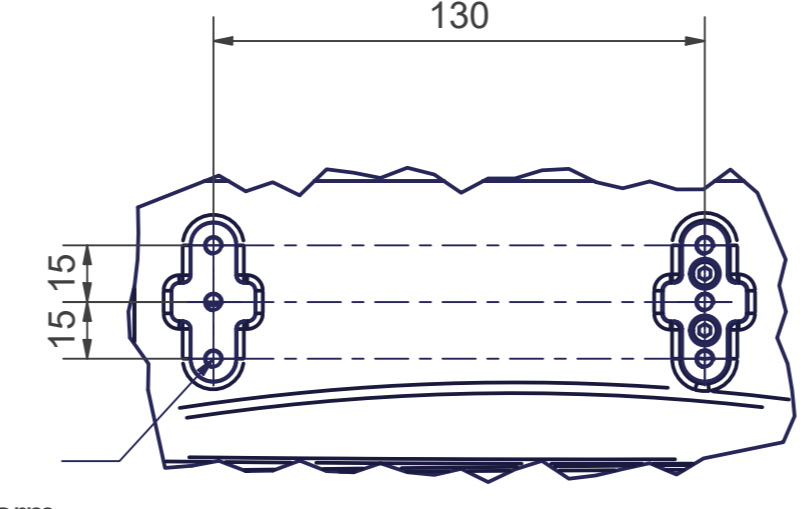
B-B



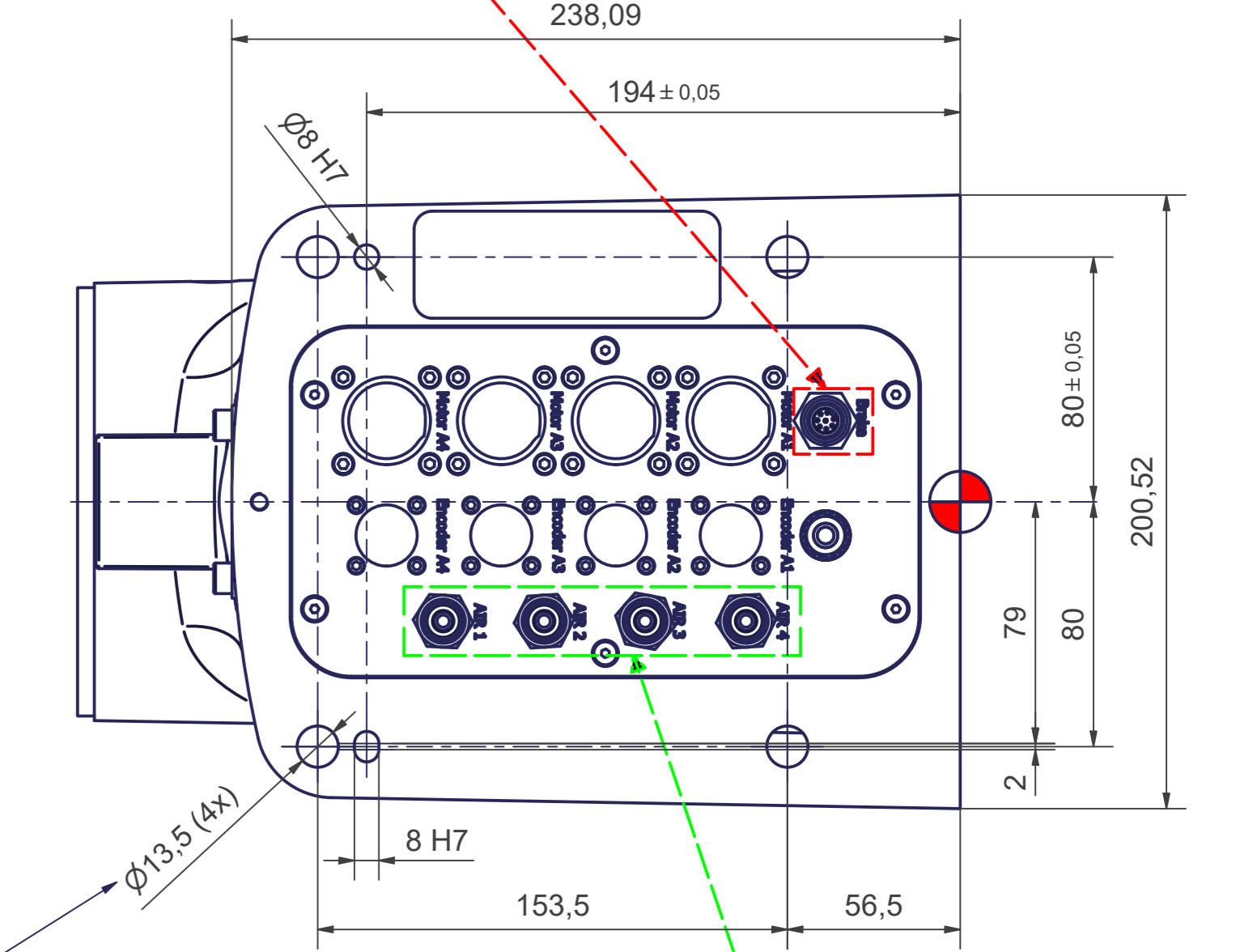
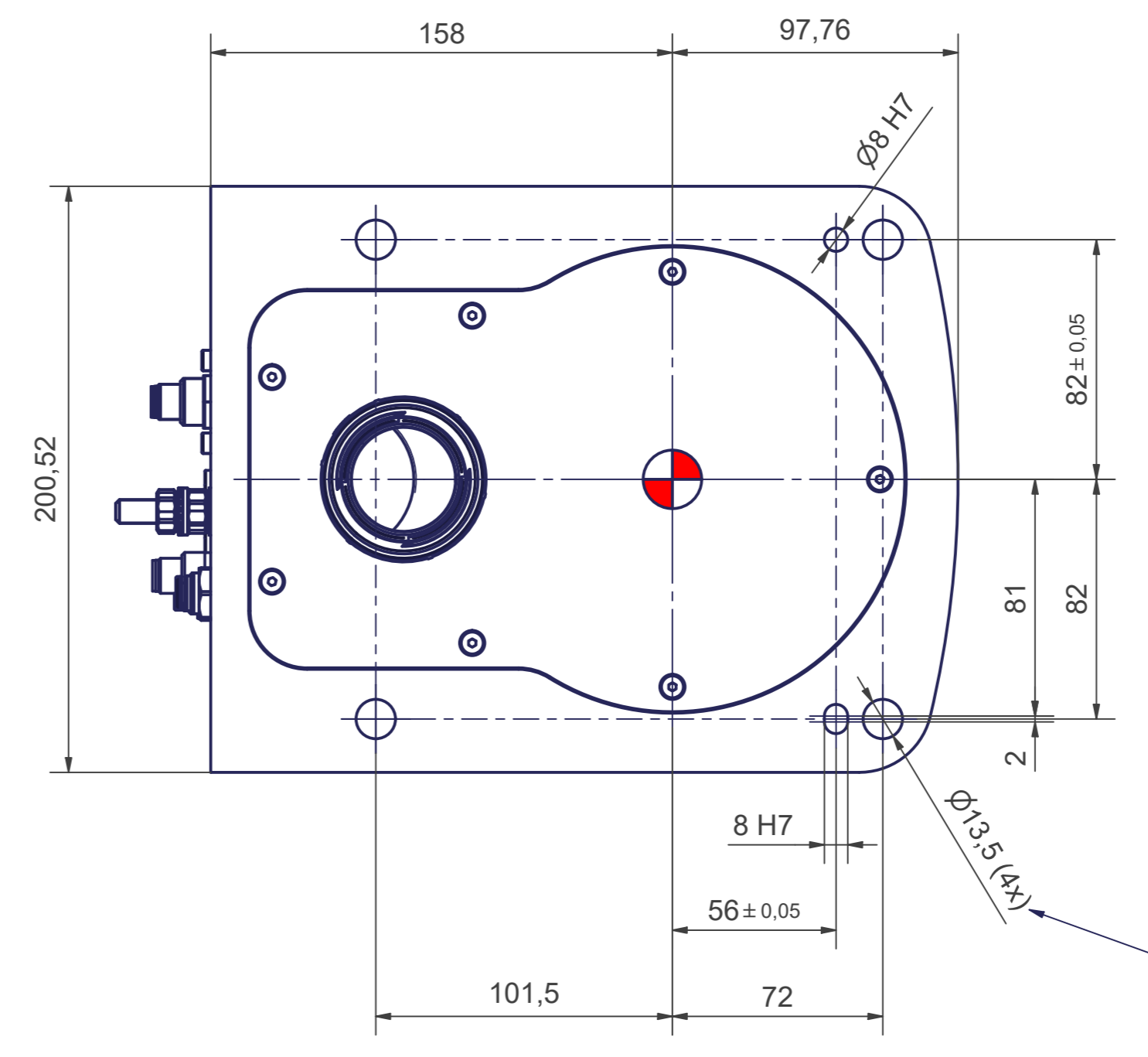
PIN assignment by autonox Robotics

PIN number	Connection to	M12 8-pin male
1	Push button	
2	Push button	
3 to 8	Not connected	

Y (1 : 2)



C (1 : 2)
Base frame



for screws M12 (DIN ISO 4014/4017-8.8) the tightening torque for these screws is 83 Nm (in steel frame).

Incl. fourfold integrated media supply to the end effector (compressed air 8 bar / vacuum -1 bar / D = 6mm d = 4mm)

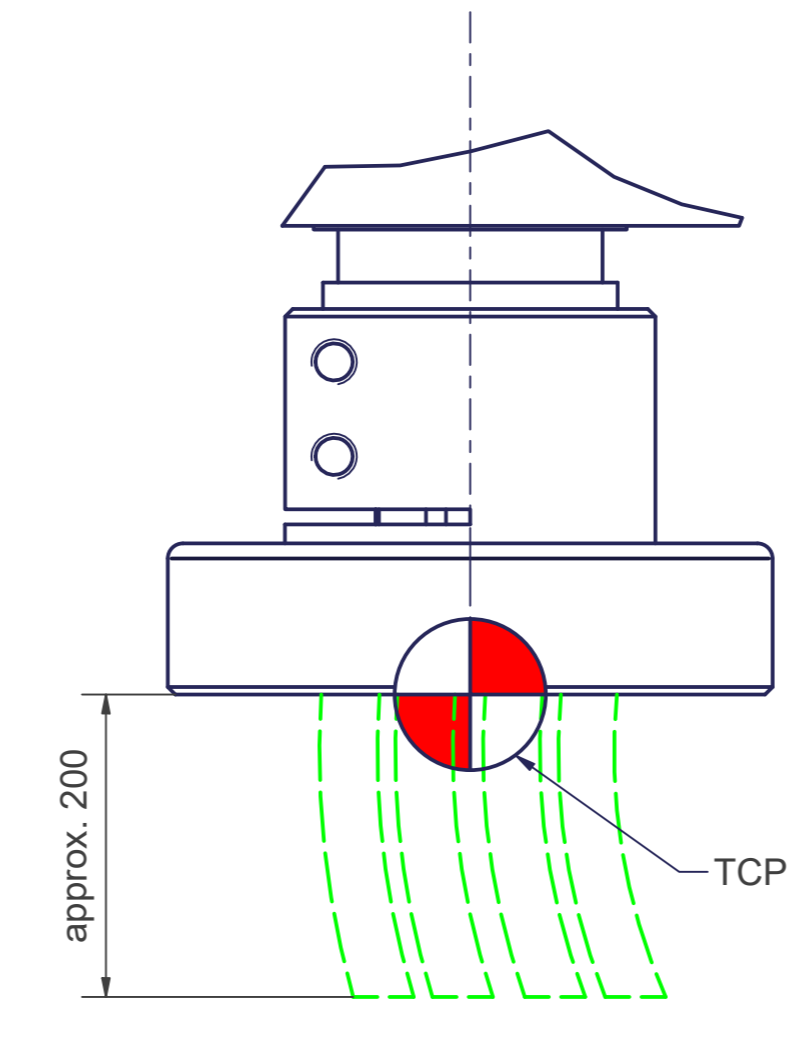
M5 ∅6 (12x) for the supplementary load on arm

Push button, for example to be able to release the motor brakes (details for connection see table "PIN assignment")

Maximum interference

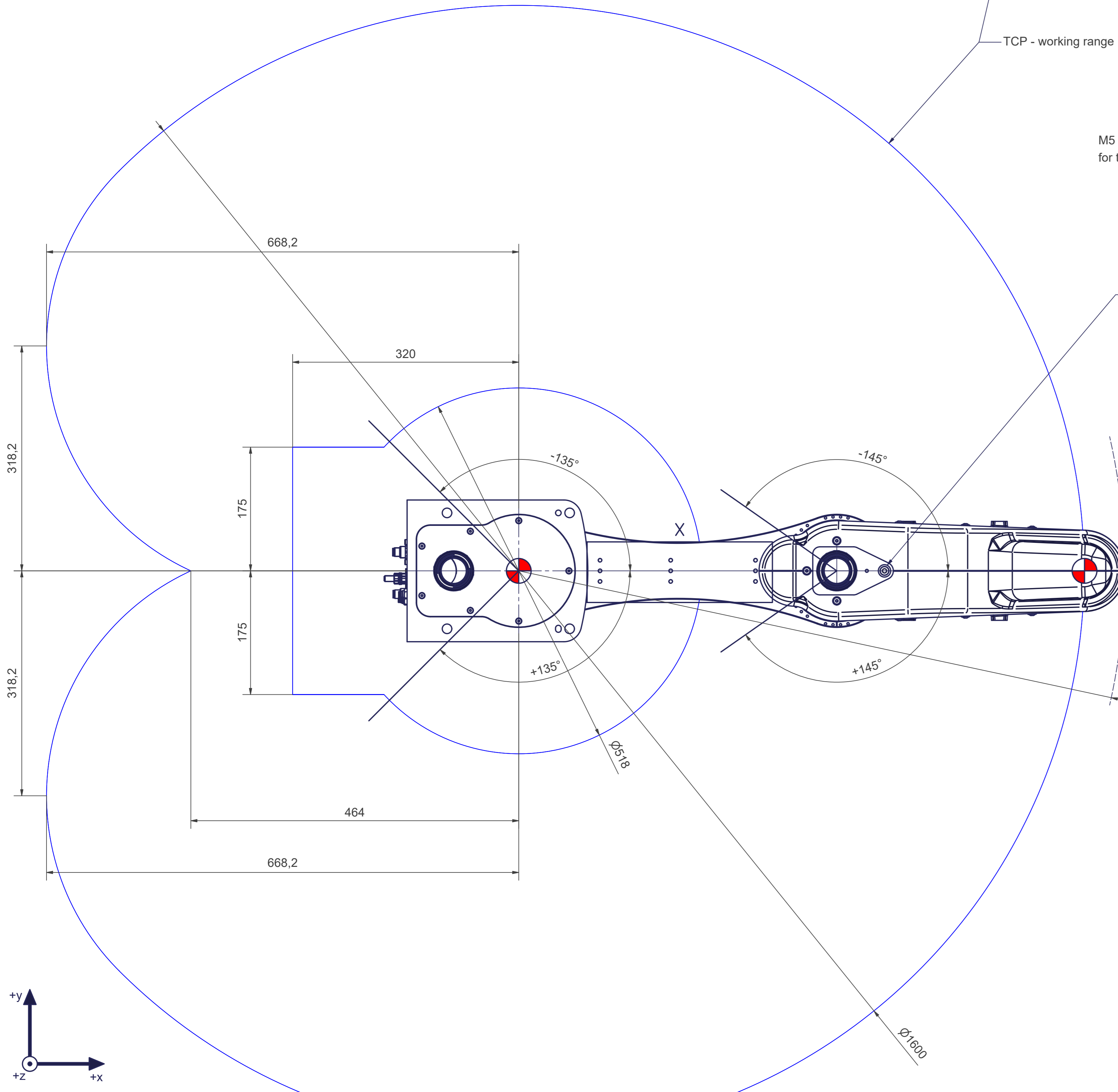
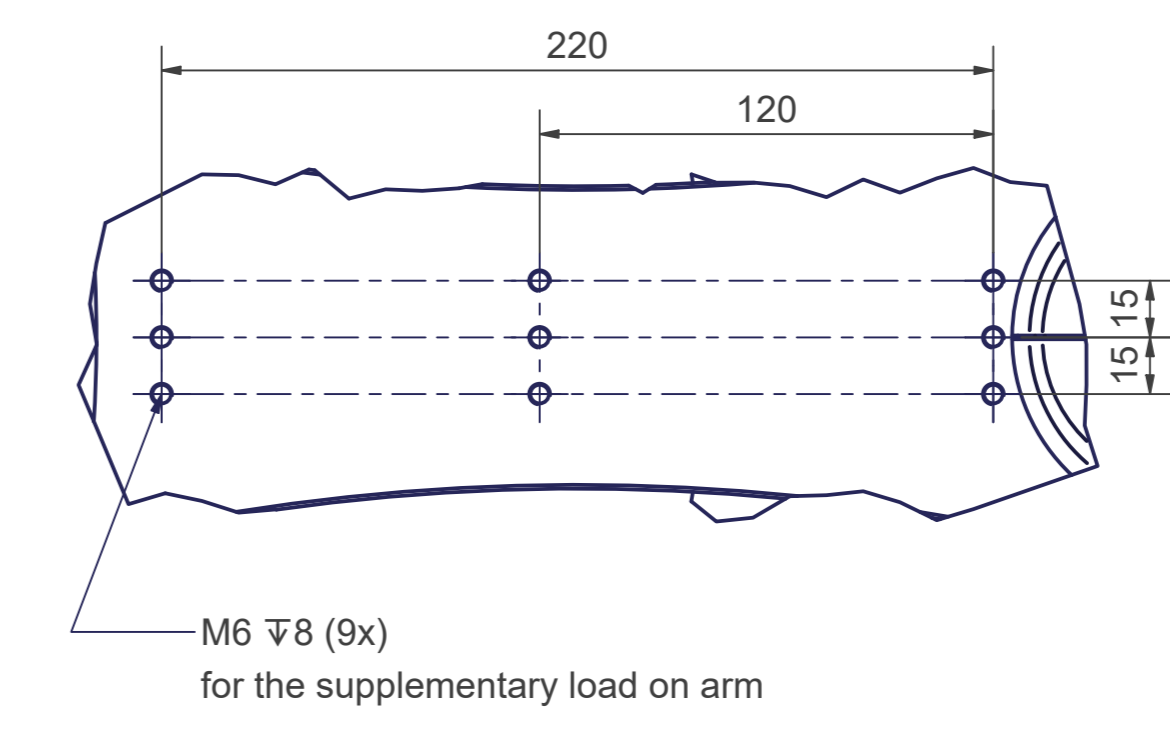
R857.37

Z (1 : 1)



Incl. fourfold integrated media supply to the end effector (compressed air 8 bar / vacuum -1 bar / D = 6mm d = 4mm)

X (1 : 2)



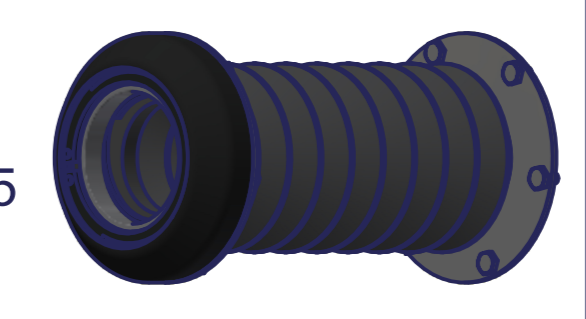
sCara4-800-6kg		Motion	
Axes	4	Axes	Range fully usable
Payload (on TCP)	6kg	A1	± 135°
Reach	800 mm	A2	± 145°
Mounting position	Floor, ceiling, wall	A3	- 385 mm / - 585 mm
		A4	± 360°

More information can be found in the document "calibration dimensions"

Connecting dimensions, valid for article number: AT_00024-01

OPTIONAL:

Bellows MT_BGR00104375



kg	kg	A	bar
m ⁻	m ²	P _z	l/min
proj. storage surface =		U _z	
		lmax _z	
		V / Hz / Ph	

