

Maximum deflection of the upper arm

Z (1:2)

Flange diagram according to tool-side change-adapter (MT_BGR00021657)

A (1:1)

OPTIONAL: Tool-side change-adapter MT_BGR00021657

The mark "A" and "B" of the Tool-side change-adapter must fit with the mark "A" and "B" on the Roboter-side change-head.

Fitting - (not included) for example: Festo, Push-in fitting Product name: QS-G1/8-6-I Part number:186107

OPTIONAL: Tool-side change-adapter MT_BGR00021657

Interference contour from machine body

Maximum interference contour

Tool Center Point TCP (on the plane of the flange)

TCP - working range

Depending on the drive type

Interference contour for opening and closing the robot-side change-head

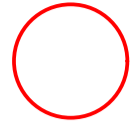

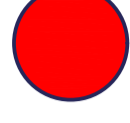
OPTIONAL:
Tool-side change-adapter MT_BGR00021657

m= kg	A	p= bar
proj. storage surface = m²		v̇= l/min
First angle projection	P= kW	U= V / Hz / Ph
	U=	I _{max} = A

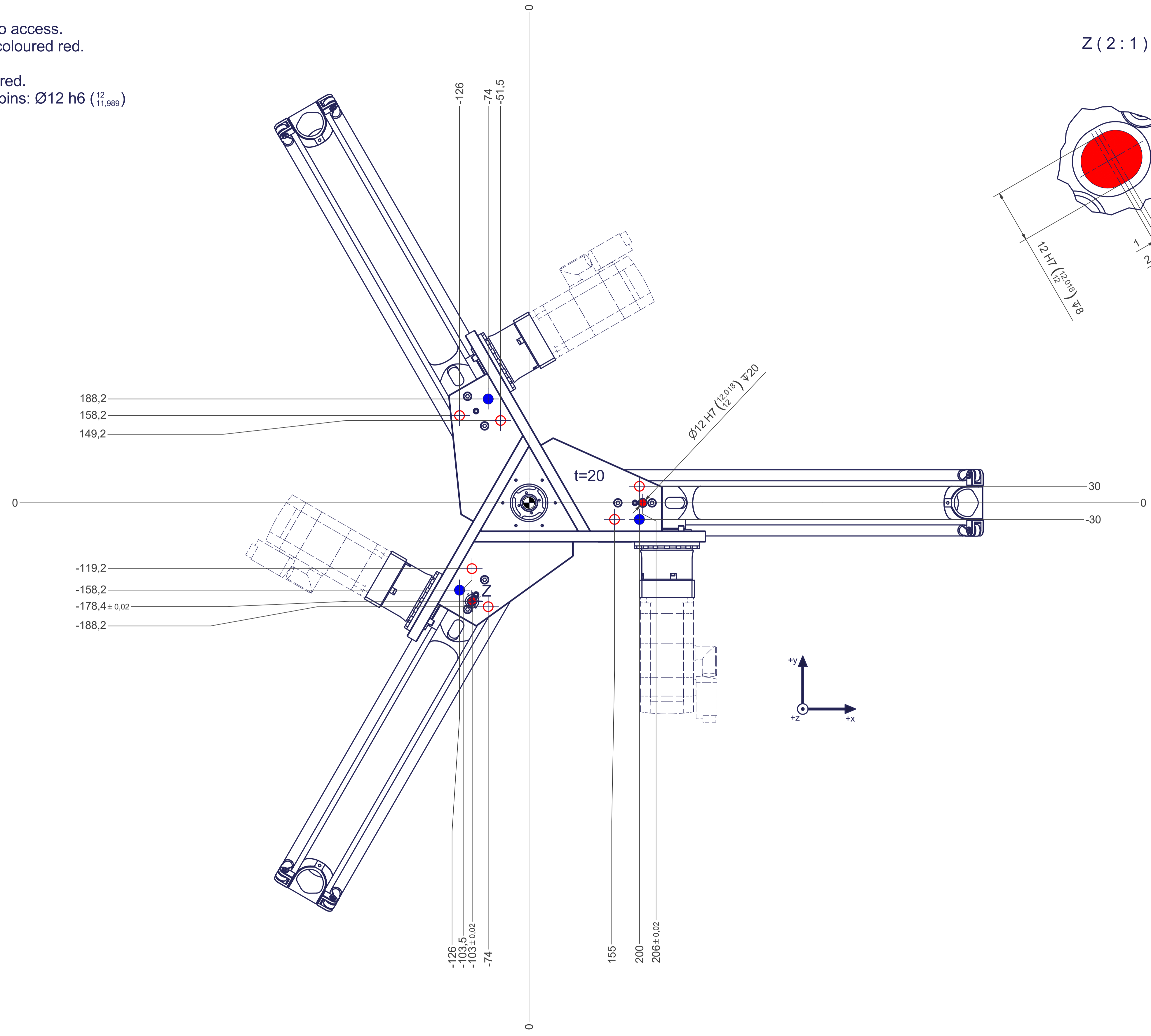
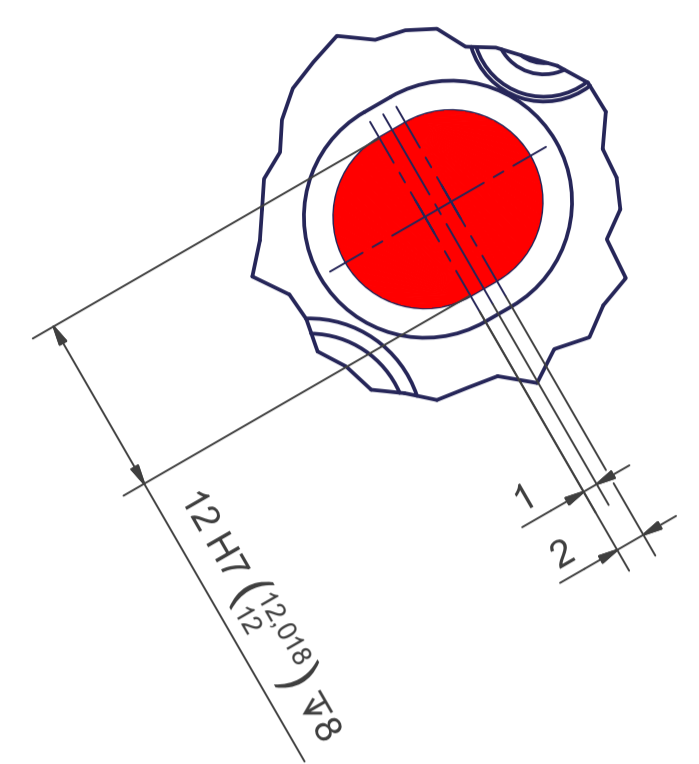
Connecting dimensions, valid for article number A_00079-ATS



12 11 10 9 8 7 6 5 4 3 2 1

-  All fastening holes $\varnothing 17,5\text{mm}$ for screws M16 (DIN ISO 4014/4017 -8.8) without washer. Fastening holes are coloured red.
-  Fastening holes filled blue are difficult to access. We recommend using fastening holes coloured red.
-  Drilling holes for locating pins are filled red. Recommended dimensions of locating pins: $\varnothing 12\text{ h6 } (\begin{smallmatrix} 12 \\ 11,989 \end{smallmatrix})$

Z (2:1)



12 11 10 9 8 7 6 5 4 3 2 1