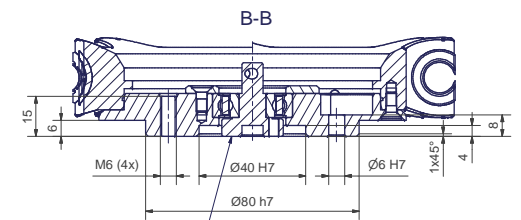
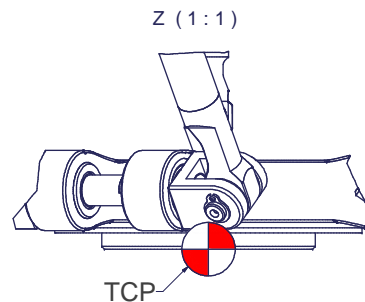
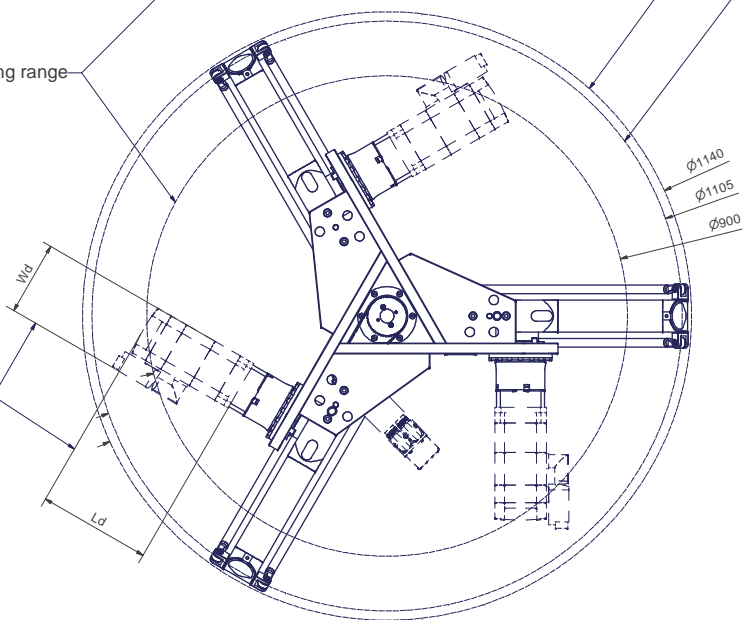


Tool Center Point  
TCP (on the plane of the flange)

TCP - working range

Depending on the drive type



The T1-rotation has to be borne in the gripper: there is axial- and tilting clearance in the T1-flange avoiding overdefined system when mounted on the gripper.

m= kg	A	p= bar
projected storage surface = m²	P= kW	v= l/min
U= V / Hz / Ph	I <sub>max</sub> = A	

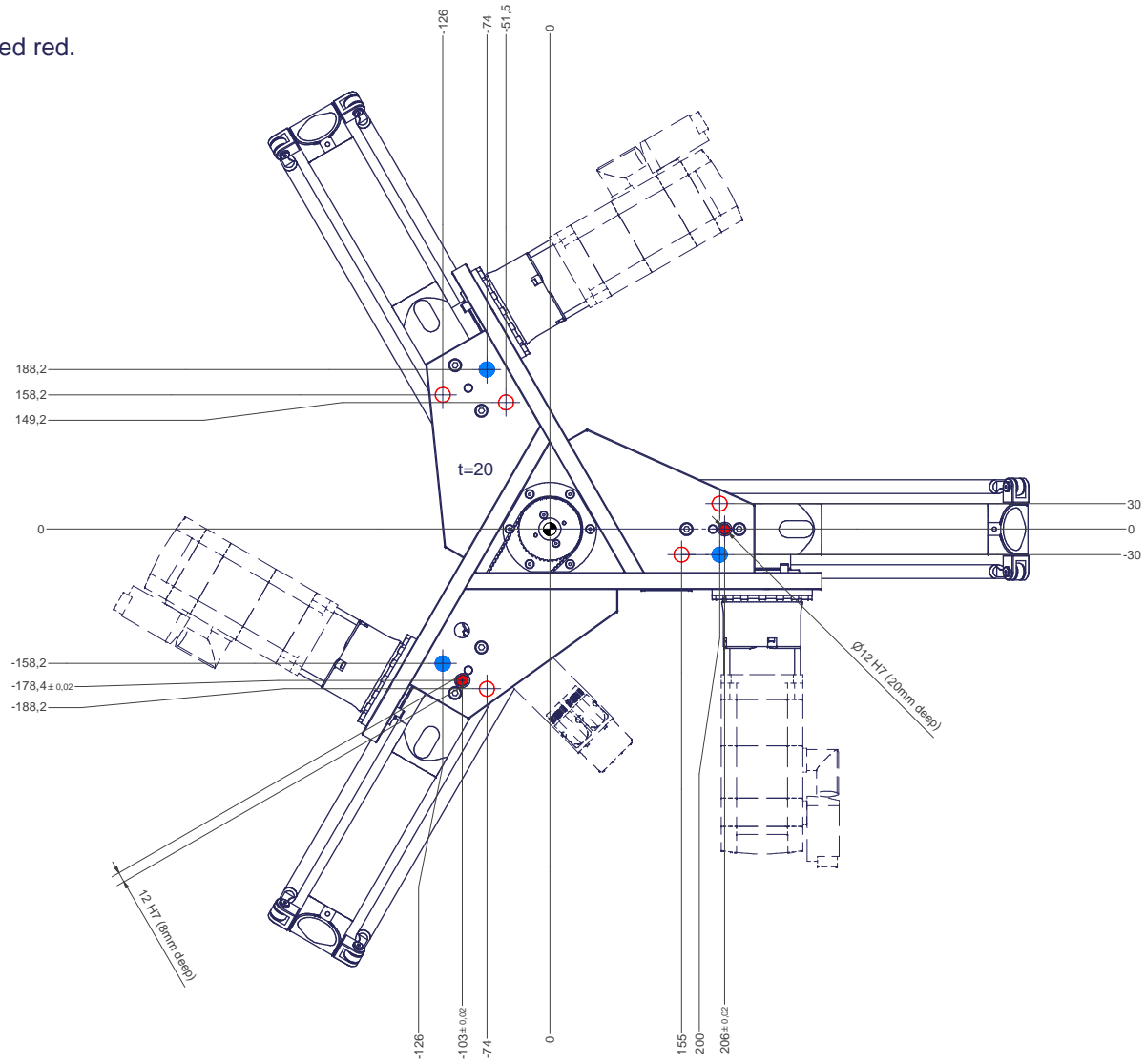
Valid for article number A\_00033-T1

12 11 10 9 8 7 6 5 4 3 2 1

○ All fastening holes  $\varnothing 17,5\text{mm}$  for screws M16 (DIN ISO 4014/4017 -8.8) without washer. Fastening holes are coloured red.

● Fastening holes filled blue are difficult to access. We recommend using fastening holes coloured red.

● Drilling holes for locating pins are filled red.



12 11 10 9 8 7 6 5 4 3 2 1