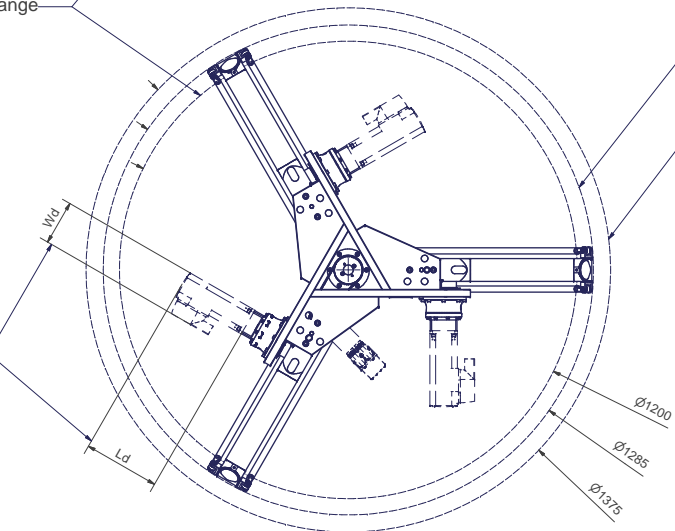


Tool Center Point  
TCP (on the plane of the flange)

TCP - working range

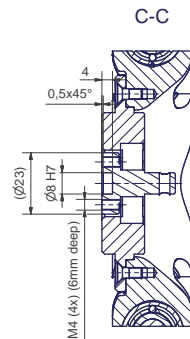
Depending on  
the drive type



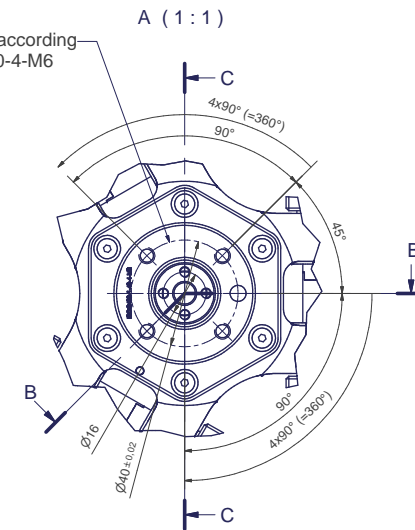
Don't turn the rotational axis  
in this marked area!

Interference contour  
from machine body

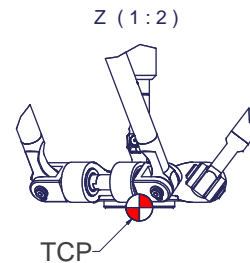
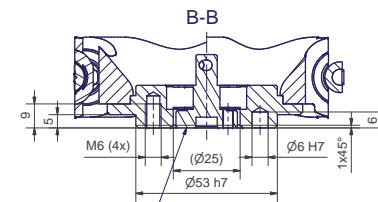
Maximum interference contour



Flange diagram according  
to ISO 9409-1-40-4-M6



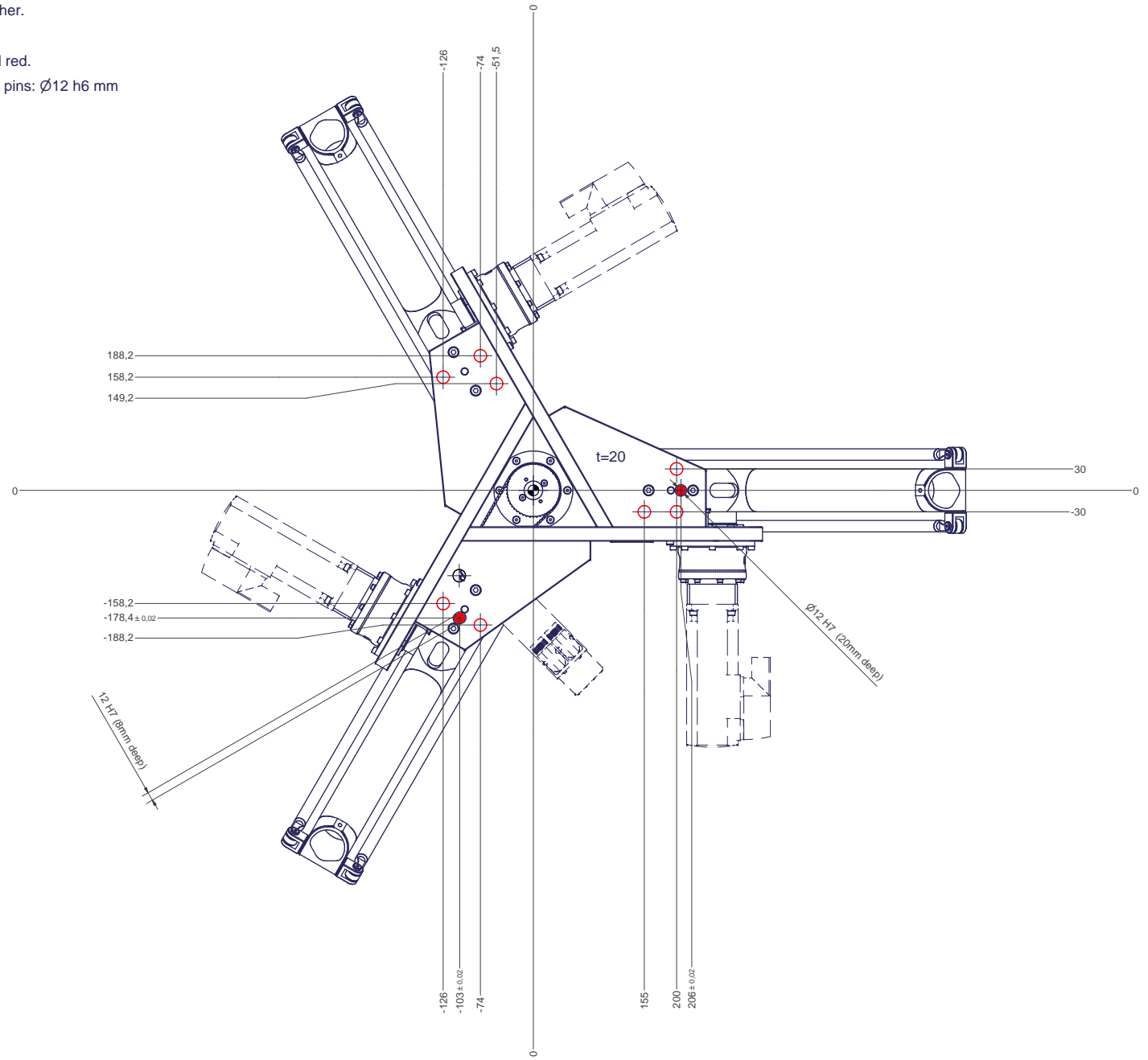
The T1-rotation has to be borne in the gripper:  
there is axial- and tilting clearance in the T1-flange  
avoiding overdefined system when mounted on  
the gripper.



m= kg	A	p= bar
projected storage surface = m <sup>2</sup>	P= kW	v= l/min
U= V / Hz / Ph	I <sub>max</sub> = A	

12 11 10 9 8 7 6 5 4 3 2 1

- All fastening holes  $\varnothing 17,5\text{mm}$  for screws M16 (DIN ISO 4014/4017 -8.8) without washer. Fastening holes are coloured red.
- Drilling holes for locating pins are filled red. Recommended dimensions of locating pins:  $\varnothing 12\text{ h6 mm}$



12 11 10 9 8 7 6 5 4 3 2 1