

Z (1 : 2)

Flange diagram - according to **tool-side change-adapter** (MT_BGR00020310)

A (1 : 1)

Maximum deflection of the upper arm

approx. 235

790

approx. 431

250

Tool Center Point
TCP (on the plane of the flange)

Ø1200

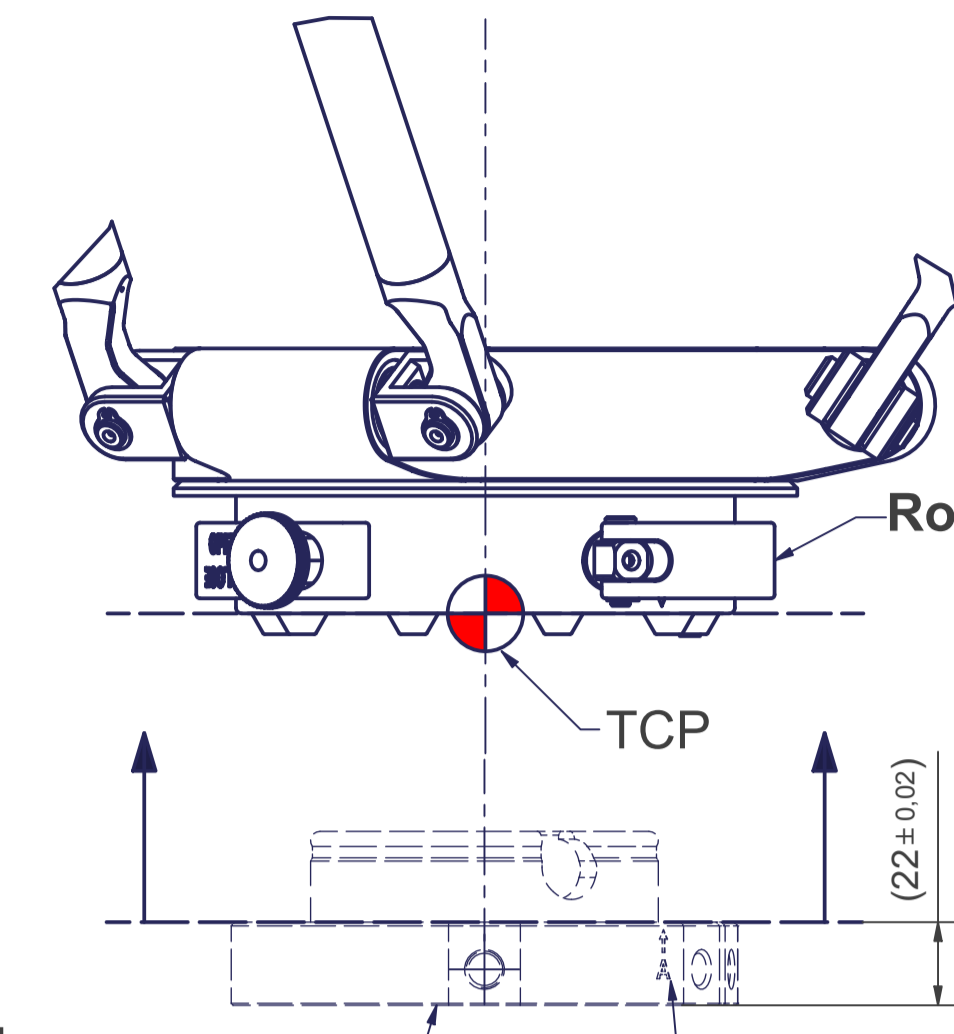
TCP - working range

+z
+y
+x

(R1084,16)

Interference contour from machine body

Maximum interference contour



Robot-side change-head

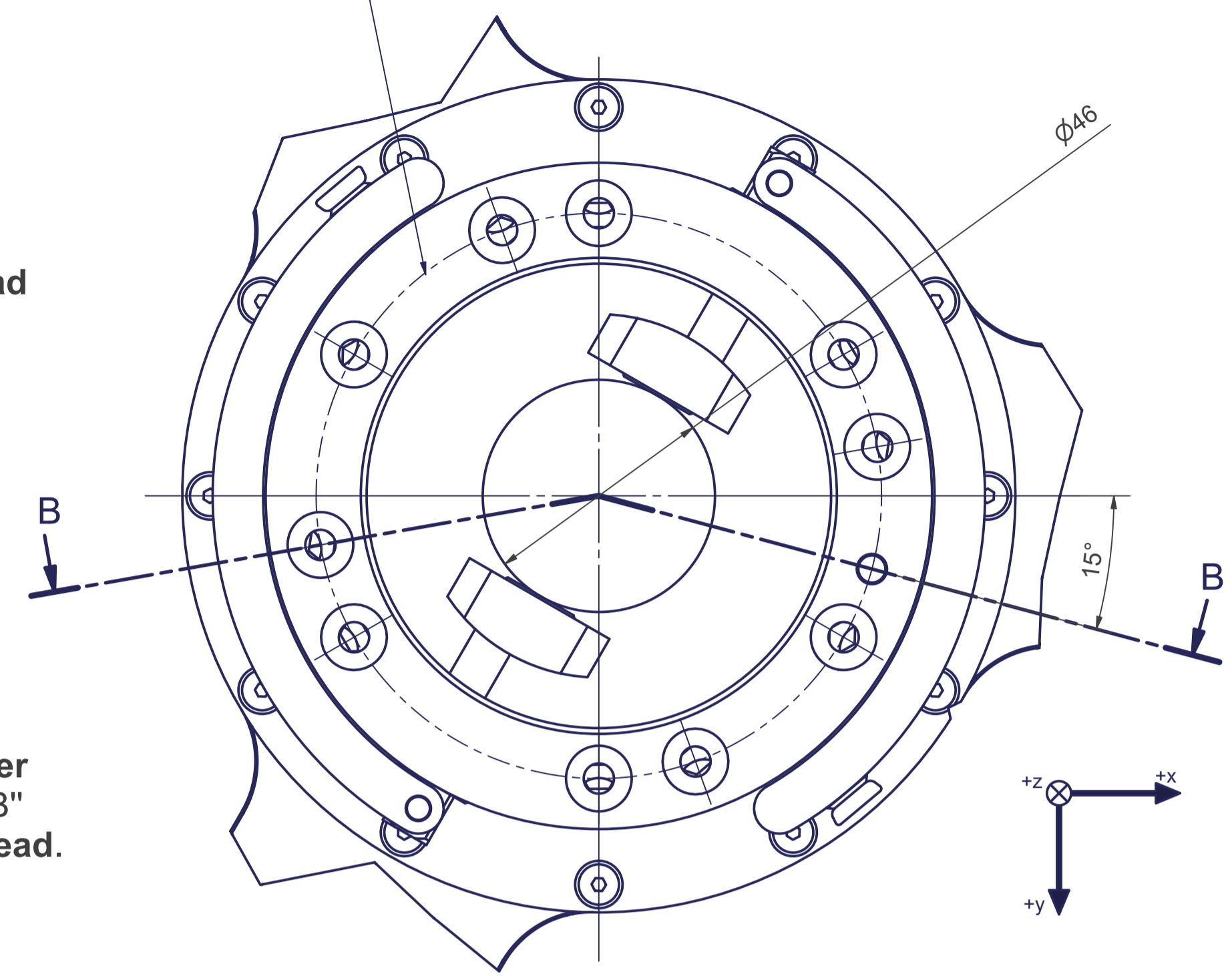
TCP

(22±0.02)

+z
+y
+x

OPTIONAL:
Tool-side change-adapter
MT_BGR00020310

The mark "A" and "B" of the **Tool-side change-adapter** must fit with the mark "A" and "B" on the **Roboter-side change-head**.

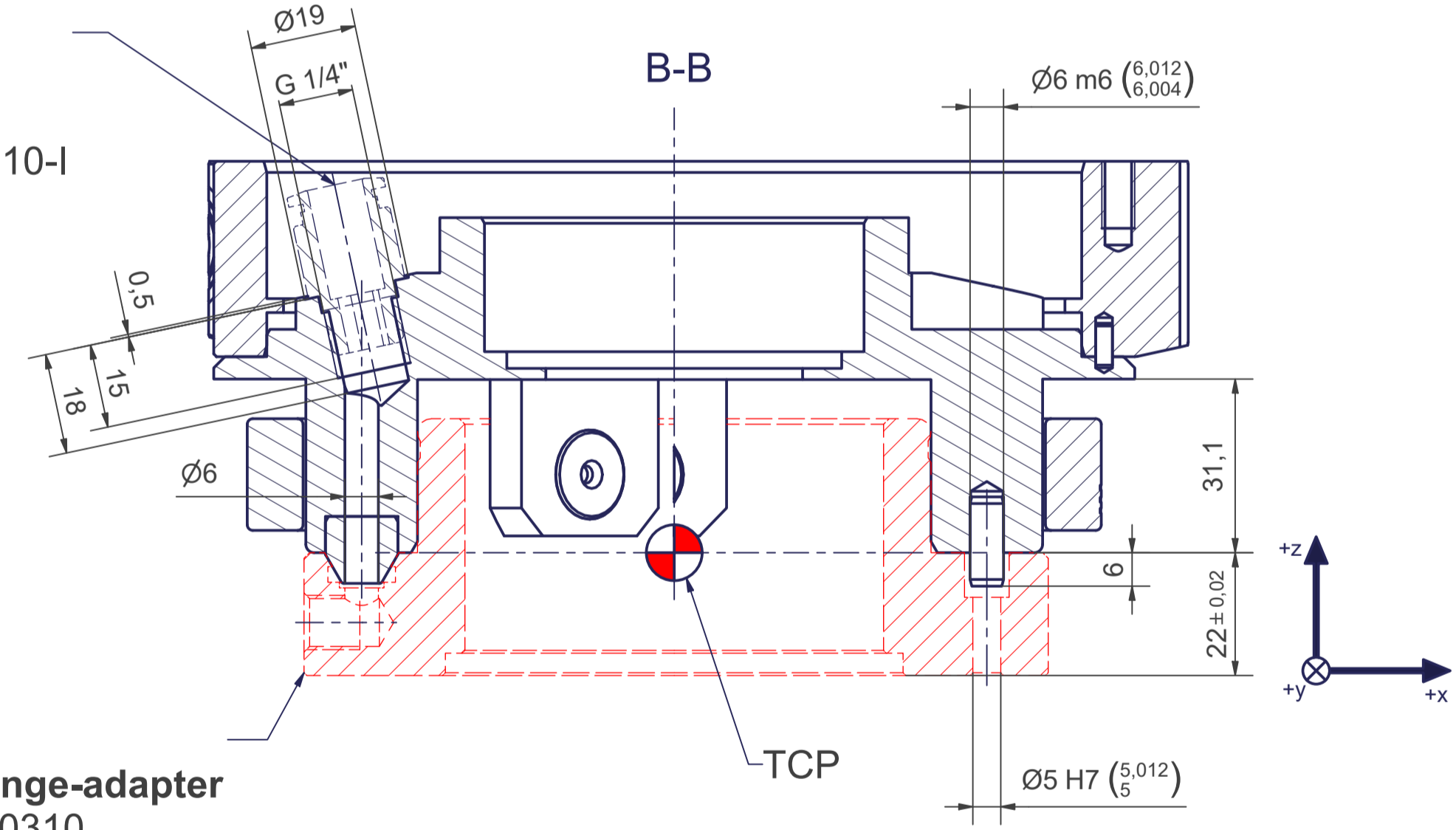


Ø46

15°

+z
+y
+x

Fitting - (not included)
for example:
Festo, Push-in fitting
Product name: QS-1/4-10-I
Part number: 153018



B-B

Ø6 m6 ^(6,012)/_(6,004)

31,1

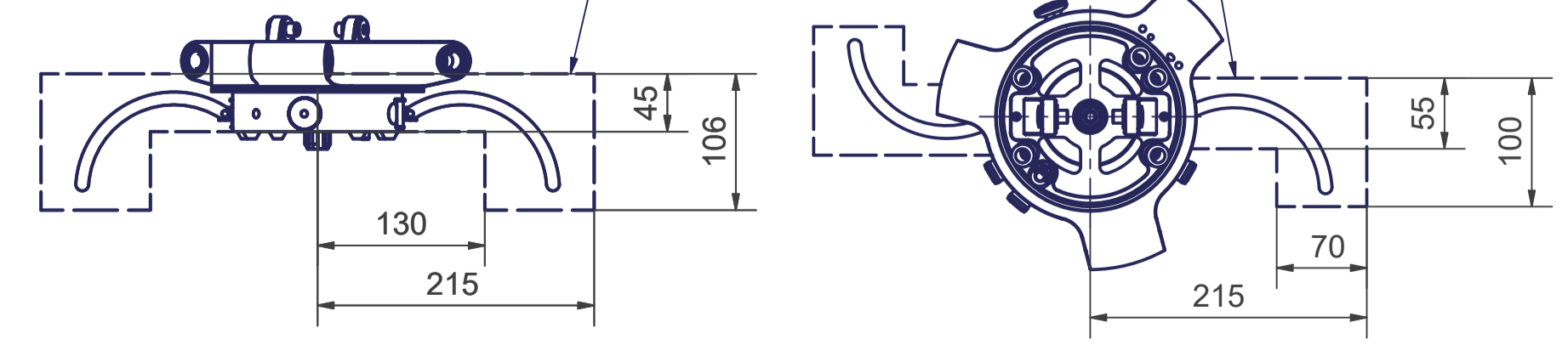
22±0.02

Ø5 H7 ^(5,012)/₍₅₎

+z
+y
+x

OPTIONAL:
Tool-side change-adapter
MT_BGR00020310

Interference contour for opening and closing the **Robot-side change-head**



45

106

130

215

55

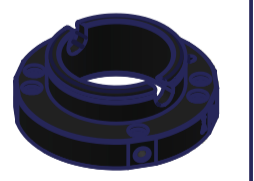
100

70

215

+y
+z
+x

OPTIONAL:
Tool-side change-adapter MT_BGR00020310

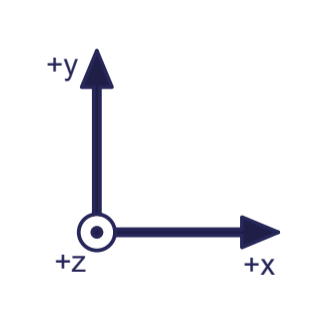
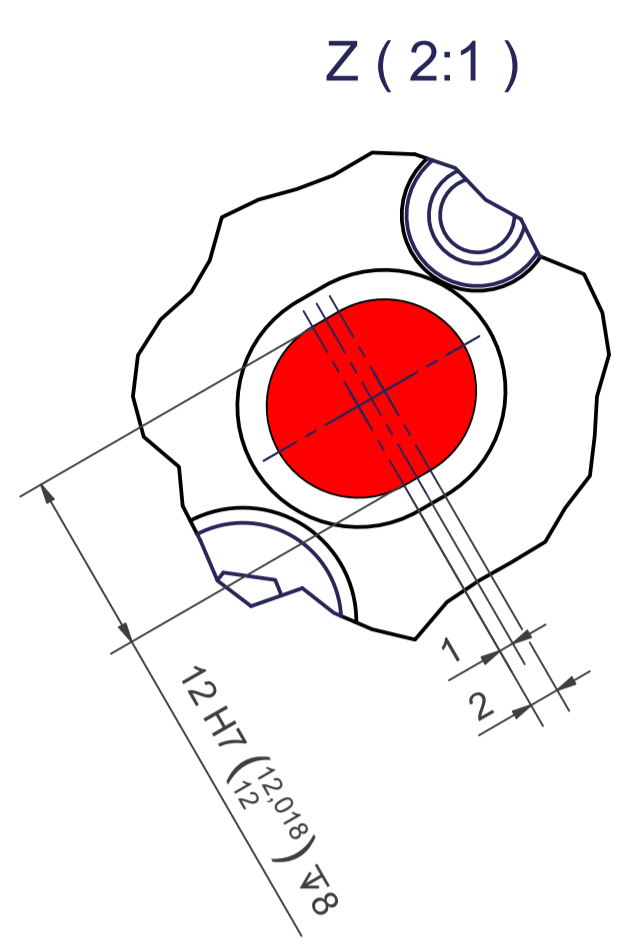
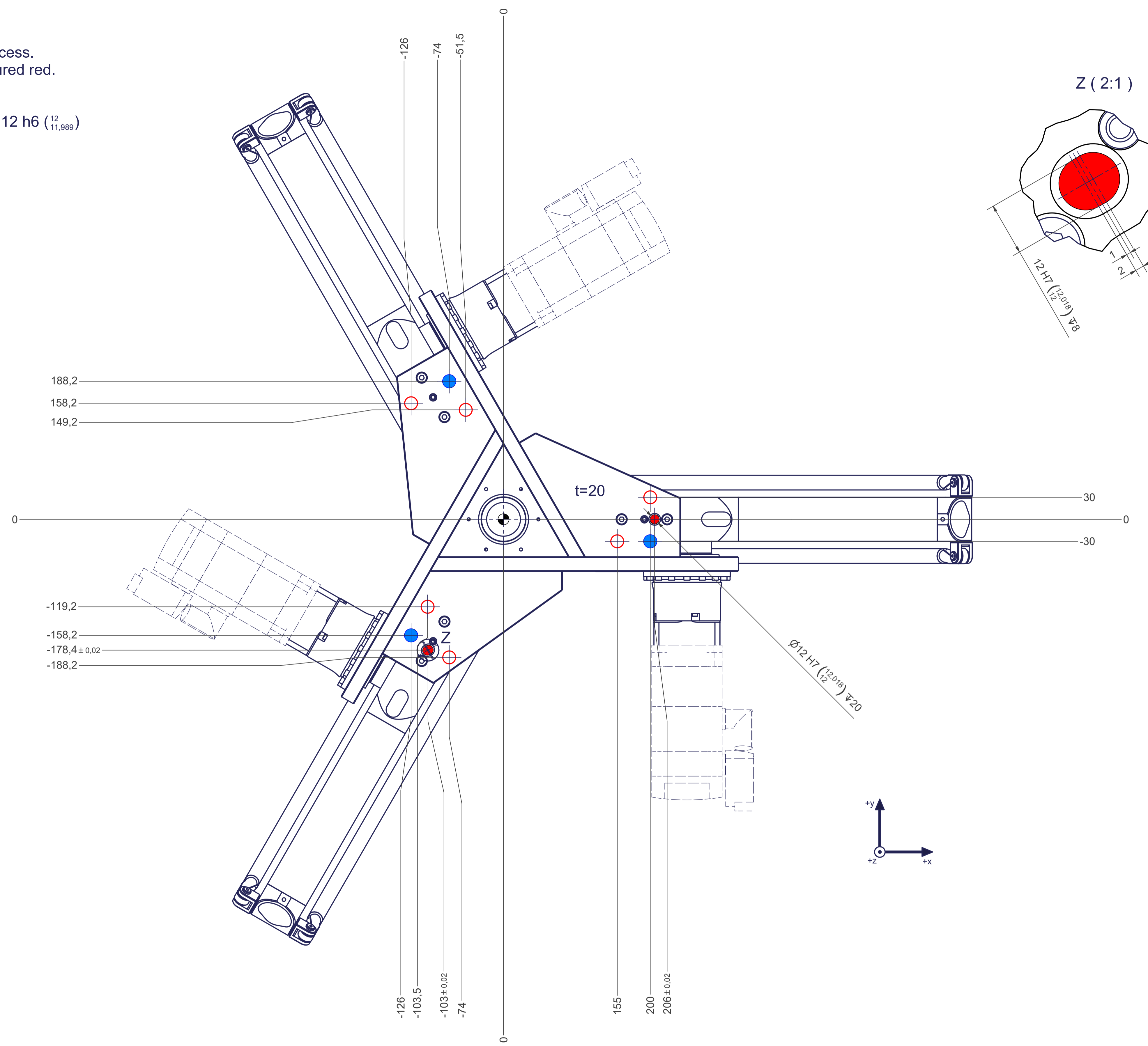


m= kg	A	p= bar
proj. storage surface = m²		v= l/min
First angle projection	P= kW	
	U= V / Hz / Ph	
	Imax= A	

Connecting dimensions, valid for article number A_00050-02-ATS

12 11 10 9 8 7 6 5 4 3 2 1

- All fastening holes $\varnothing 17,5\text{mm}$ for screws M16 (DIN ISO 4014/4017 -8.8) without washer. Fastening holes are coloured red.
- Fastening holes filled blue are difficult to access. We recommend using fastening holes coloured red.
- Drilling holes for locating pins are filled red. Recommend dimensions of locating pins: $\varnothing 12\text{ h6 } \left(\begin{smallmatrix} 12 \\ 11,989 \end{smallmatrix} \right)$



12 11 10 9 8 7 6 5 4 3 2 1