

Depending on the drive type

Maximum deflection of the upper arm

Z (1 : 2)

A (3 : 2)

OPTIONAL:
Tool-side change-adaptor
MT_BGR00021657

The mark "A" and "B"
of the Tool-side change-adaptor
must fit with the mark "A" and "B"
on the Roboter-side change-head.

Flange diagram -
according to tool-side change-adaptor (MT_BGR00021657)

Interference contour
from machine body

Maximum interference
contour

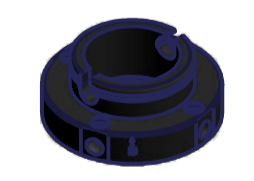
Tool Center Point
TCP (on the plane of the flange)

TCP - working range

OPTIONAL:
Tool-side change-adaptor
MT_BGR00021657

Fitting - (not included)
for example:
Festo, Push-in fitting
Product name: QS-G1/8-6-1
Part number: 186107

OPTIONAL:
Tool-side change-adaptor MT_BGR00021657



Interference contour
for opening and closing
the robot-side change-head

m= kg	A	p= bar
projected storage surface = m ²	P= kW	v̇= l/min
	U= V / Hz / Ph	
	I _{max} = A	

12

11

10

9

8

7

6

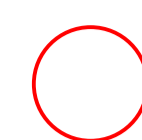
5

4

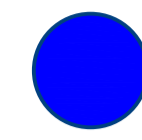
3

2

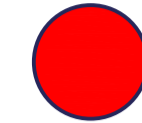
1



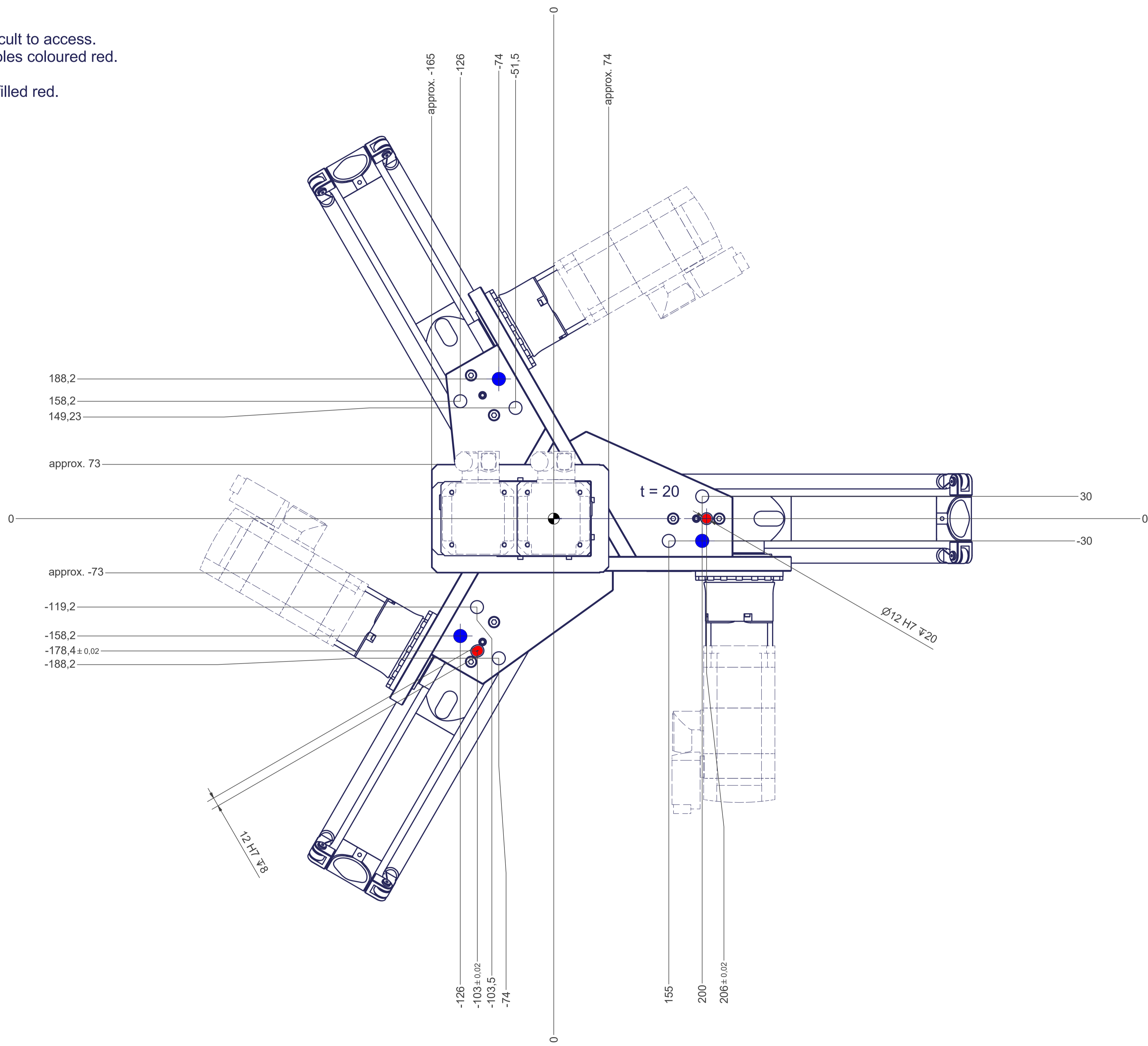
All fastening holes $\varnothing 17,5$ mm for screws M16 (DIN ISO 4014/4017 -8.8) without washers. Fastening holes are coloured red.



Fastening holes filled blue are difficult to access. We recommend using fastening holes coloured red.



Drilling holes for locating pins are filled red.



12

11

10

9

8

7

6

5

4

3

2

1