




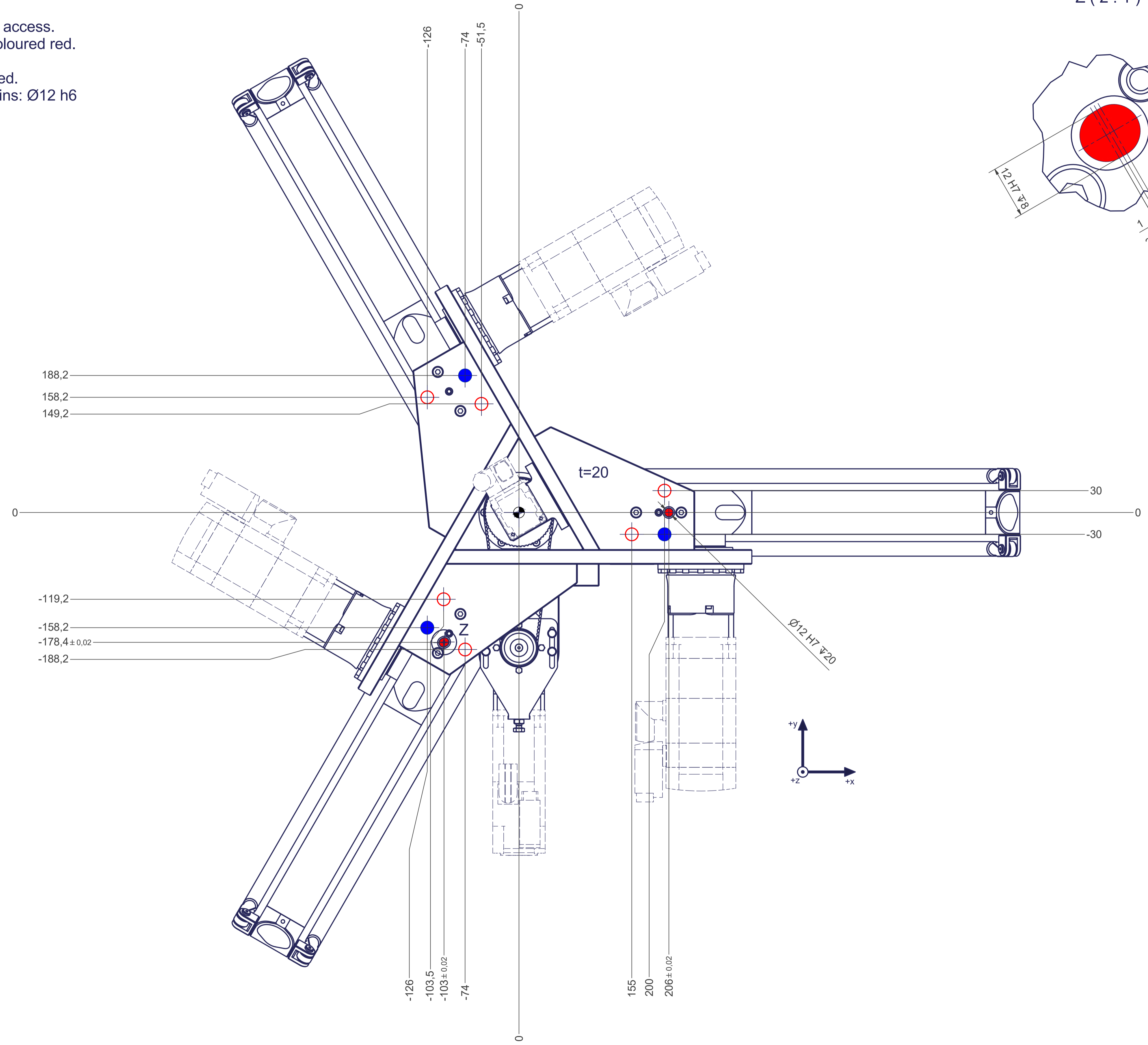
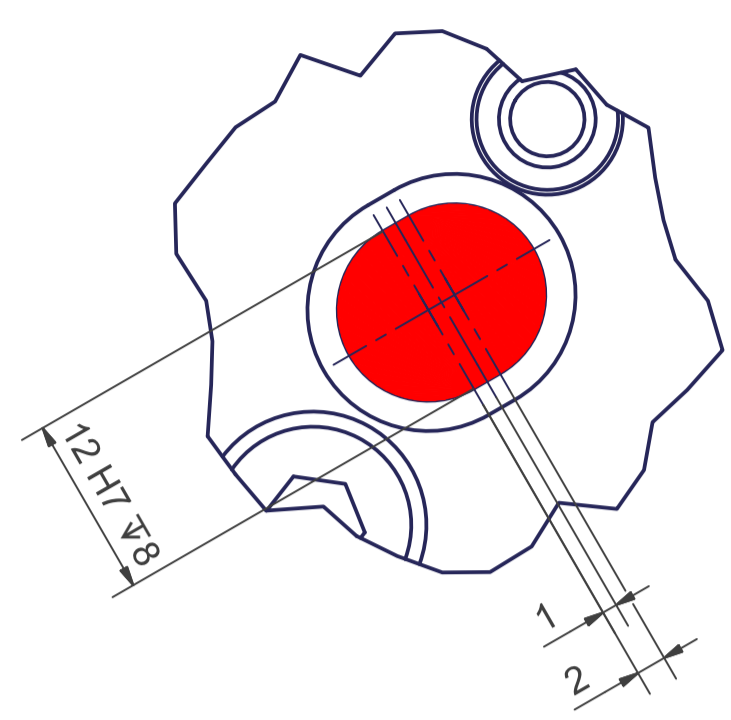
Connecting dimensions,
valid for article numbers A_00054-TS1 and A_00054-T1

m= kg	A	p= bar
proj. storage surface = m²		v= l/min
First angle projection	P= kW	U= V / Hz / Ph
	U=	Imax= A

12 11 10 9 8 7 6 5 4 3 2 1

-  All fastening holes $\varnothing 17,5$ mm for screws M16 (DIN ISO 4014/4017 -8.8) without washers. Fastening holes are coloured red.
-  Fastening holes filled blue are difficult to access. We recommend using fastening holes coloured red.
-  Drilling holes for locating pins are filled red. Recommended dimensions of locating pins: $\varnothing 12$ h6

Z (2:1)



12 11 10 9 8 7 6 5 4 3 2 1