

Tool Center Point
TCP (on the plane of the flange)

TCP - working range

Depending on the drive type

Depending on the drive type

Interference contour from machine body
Maximum interference contour

Interference contour for opening and closing the Robot-side change-head

Connecting dimensions, valid for article number A_00859-ATS

OPTIONAL:
Tool-side change-adaptor
MT_BGR00018996

The mark "A" and "B" of the Tool-side change-adaptor must fit with the mark "A" and "B" on the Robot-side change-head.

Flange diagram - according to tool-side change-adaptor (MT_BGR00018996)

Fitting - (not included) for example:
Festo, Push-in fitting
Product name: QS-1/4-10-1
Part number: 153018

OPTIONAL:
Tool-side change-adaptor
MT_BGR00018996

OPTIONAL:
Tool-side change-adaptor MT_BGR00018996

kg		A		bar	
m=	kg	P=	kW	V / Hz / Ph	Imax=
proj. storage surface =	m ²				
		AUTONEX Robotics		A_00859-ATS	

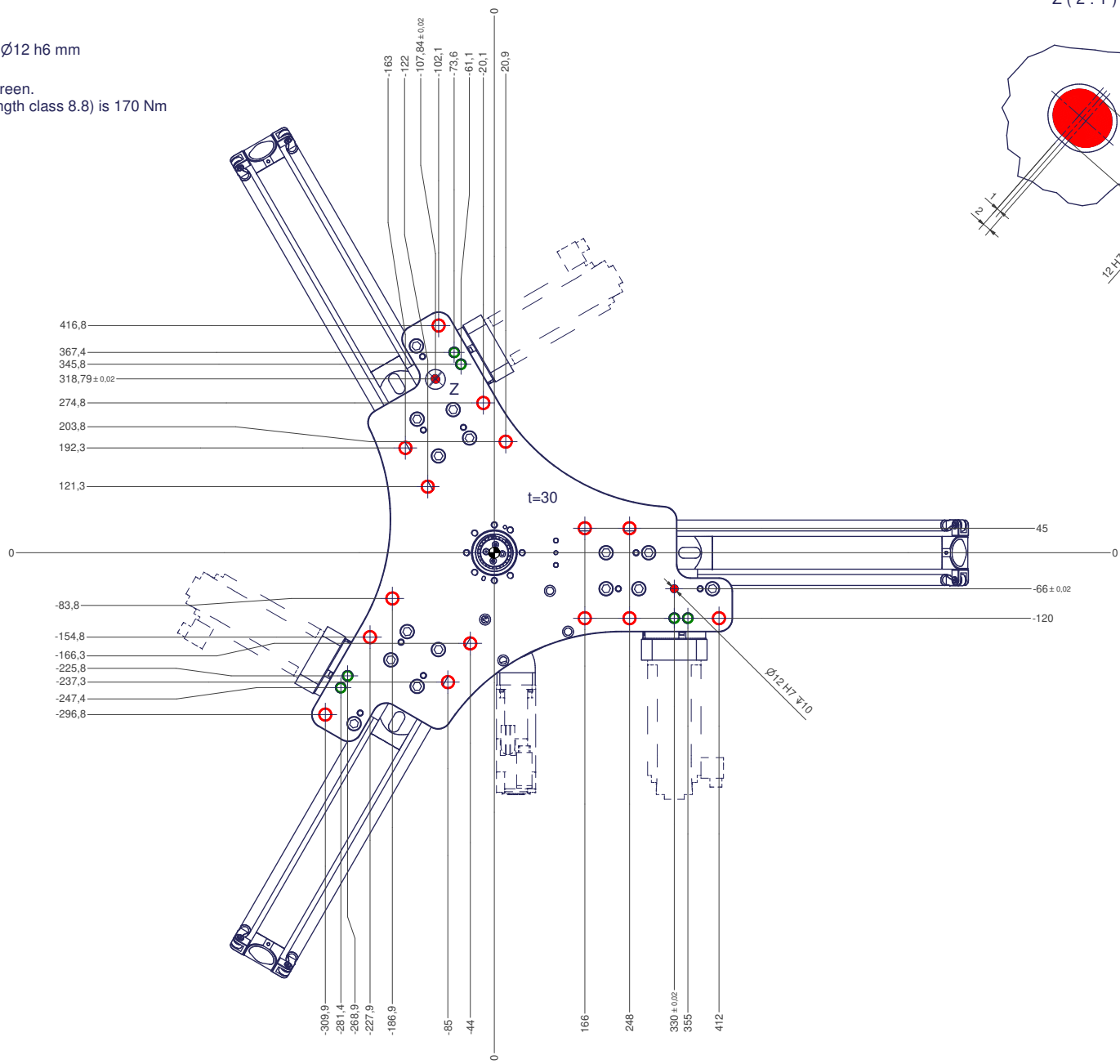
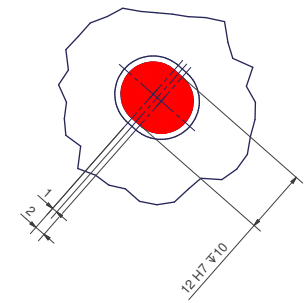
12 11 10 9 8 7 6 5 4 3 2 1

○ All fastening holes $\varnothing 22$ mm for screws M20 (DIN ISO 4014/4017 -8.8) without washer.
Fastening holes are coloured red.
The tightening torque for these screws (strength class 8.8) is 360 Nm (in a steel frame).

● Drilling holes for locating pins are filled red.
Recommended dimensions of locating pins: $\varnothing 12$ h6 mm

○ Thread holes for screws M20 are coloured green.
The tightening torque for these screws (strength class 8.8) is 170 Nm

Z (2:1)



12 11 10 9 8 7 6 5 4 3 2 1