

Maximum deflection of the upper arm

Z (1:2)

Flange diagram - according to tool-side change-adapter (MT_BGR00018996)

A (1:1)

Robot-side change-head

TCP

(22±0.02)

OPTIONAL:
Tool-side change-adapter
MT_BGR00018996

The mark "A" and "B" of the Tool-side change-adapter must fit with the mark "A" and "B" on the Robot-side change-head.

B

B

approx. 279

1008

approx. 450

250

Ø1400

(R1325)

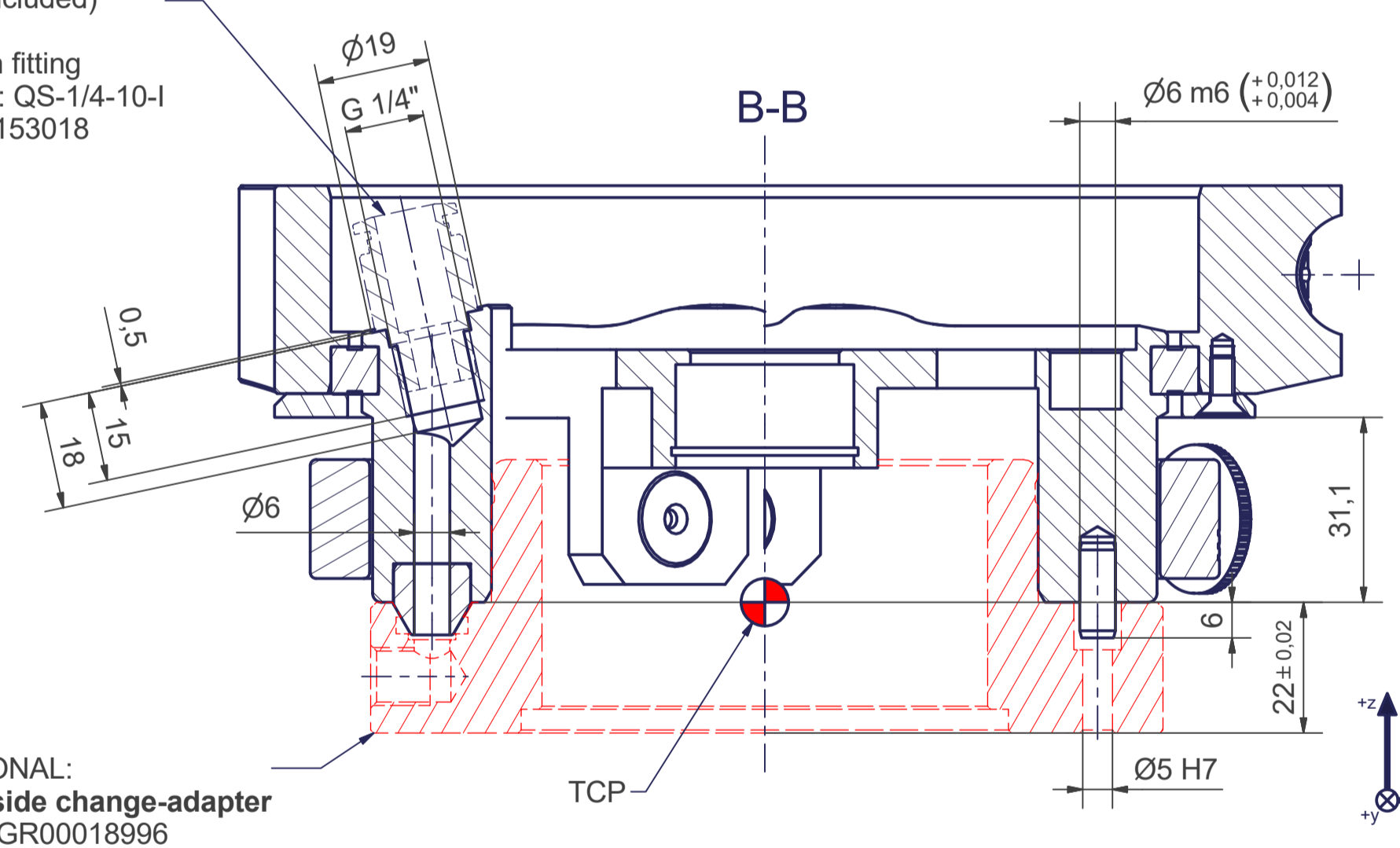
Interference contour from machine body

Maximum interference contour

Fitting - (not included) for example:
Festo, Push-in fitting
Product name: QS-1/4-10-I
Part number: 153018

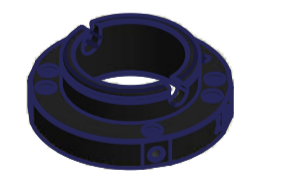
B-B

Ø6 m6 (+0.012 / +0.004)



OPTIONAL:
Tool-side change-adapter
MT_BGR00018996

OPTIONAL:
Tool-side change-adapter MT_BGR00018996



Tool Center Point
TCP (on the plane of the flange)

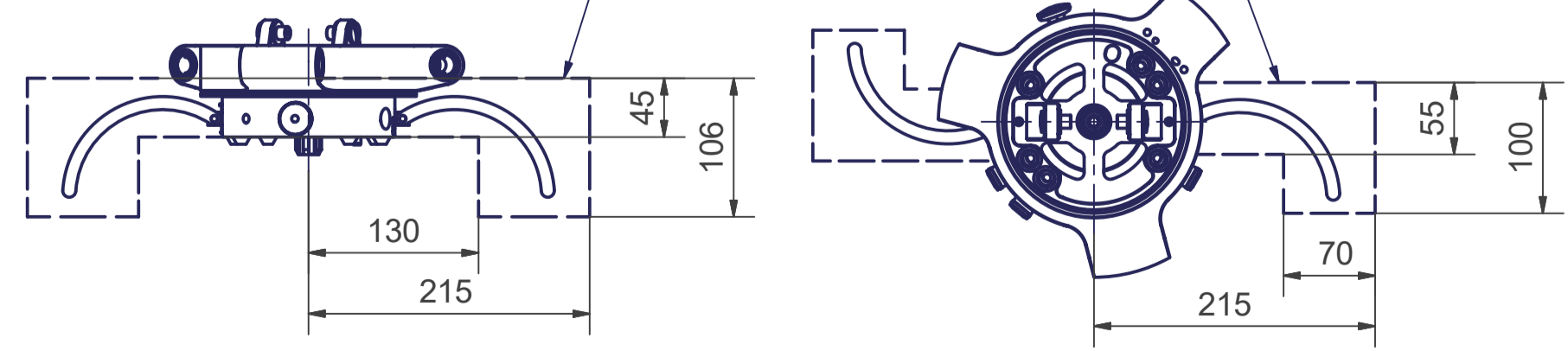
TCP - working range

Depending on the drive type

±z
±y
±x

±z
±y
±x

Interference contour for opening and closing the Robot-side change-head



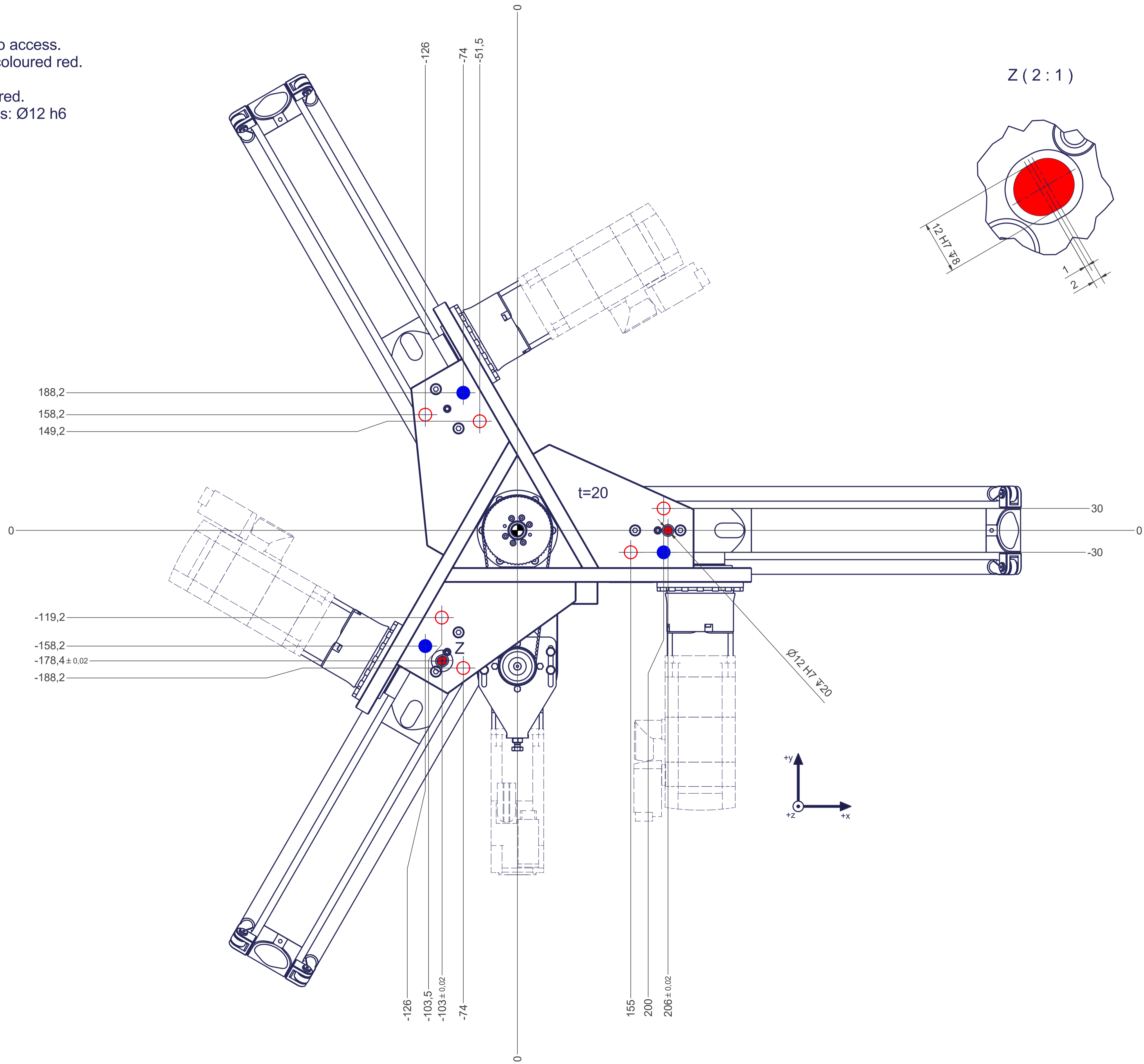
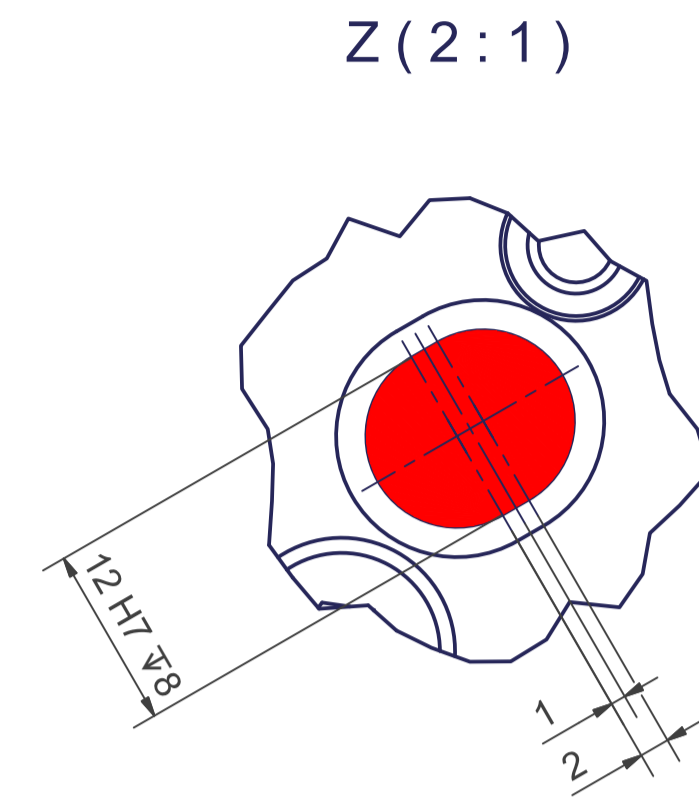
Depending on the drive type

Connecting dimensions, valid for article number A_00054-01-ATS

m= kg	A	p= bar
proj. storage surface = m²		v̇= l/min
First angle projection	P= kW	
	U= V / Hz / Ph	
	I _{max} = A	

12 11 10 9 8 7 6 5 4 3 2 1

- All fastening holes $\varnothing 17,5$ mm for screws M16 (DIN ISO 4014/4017 -8.8) without washers. Fastening holes are coloured red.
- Fastening holes filled blue are difficult to access. We recommend using fastening holes coloured red.
- Drilling holes for locating pins are filled red. Recommend dimensions of locating pins: $\varnothing 12$ h6



12 11 10 9 8 7 6 5 4 3 2 1