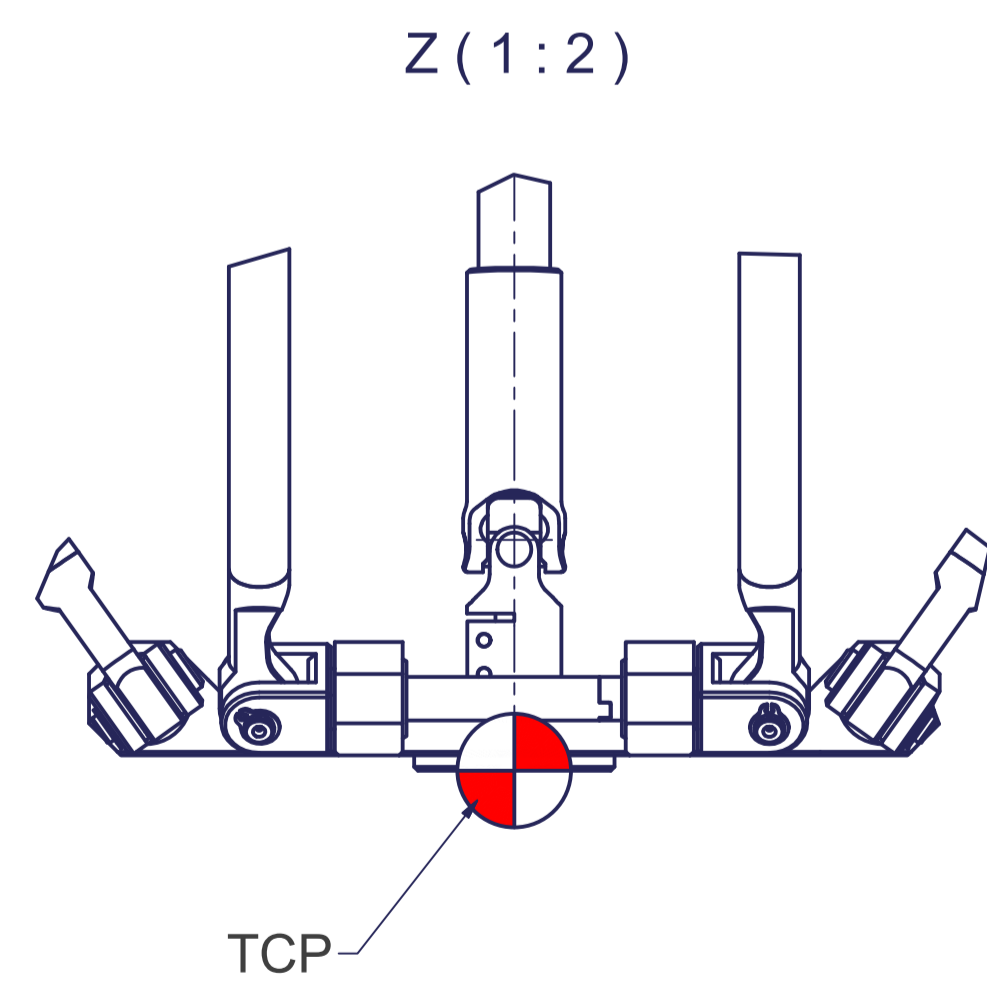
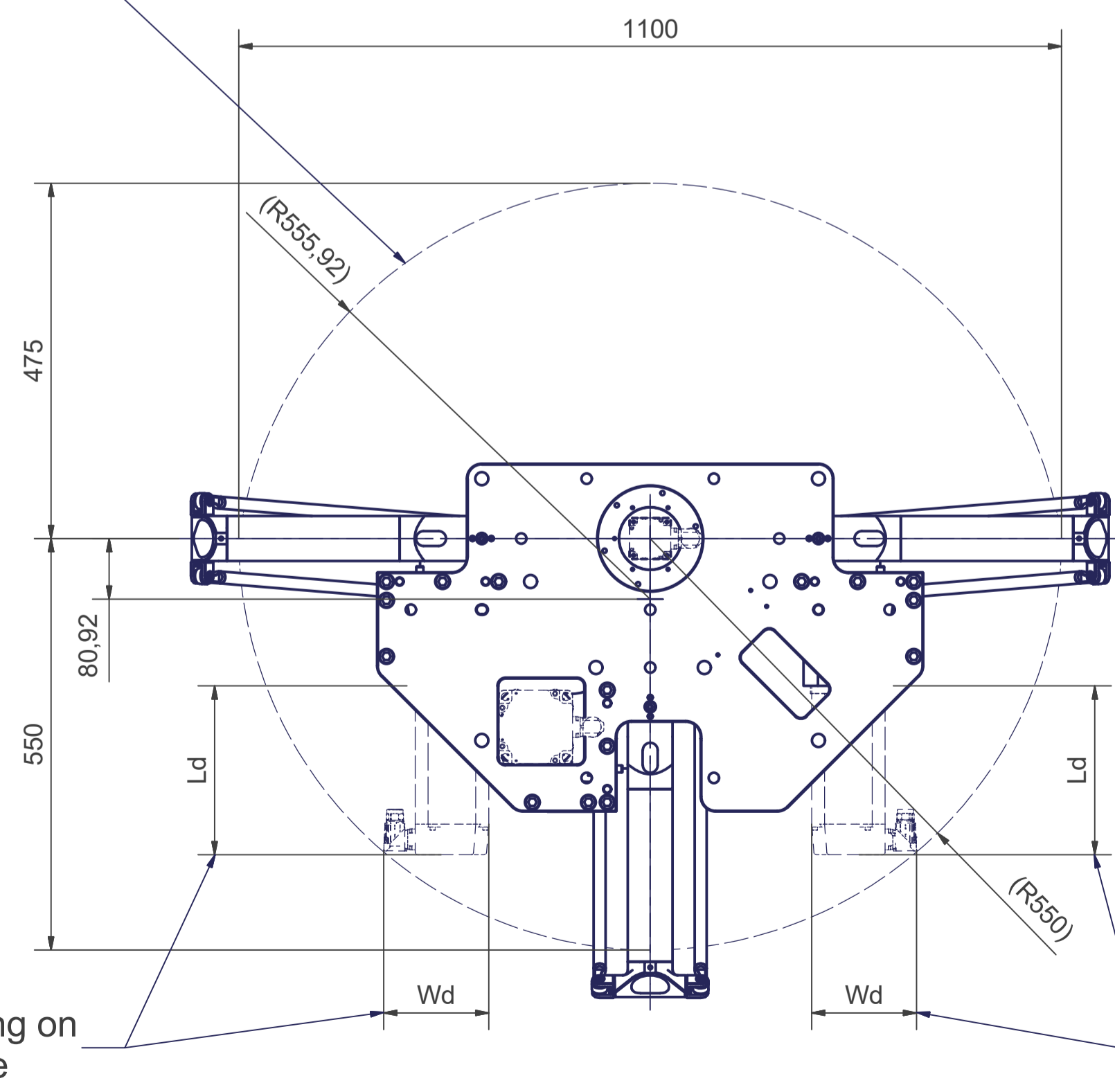
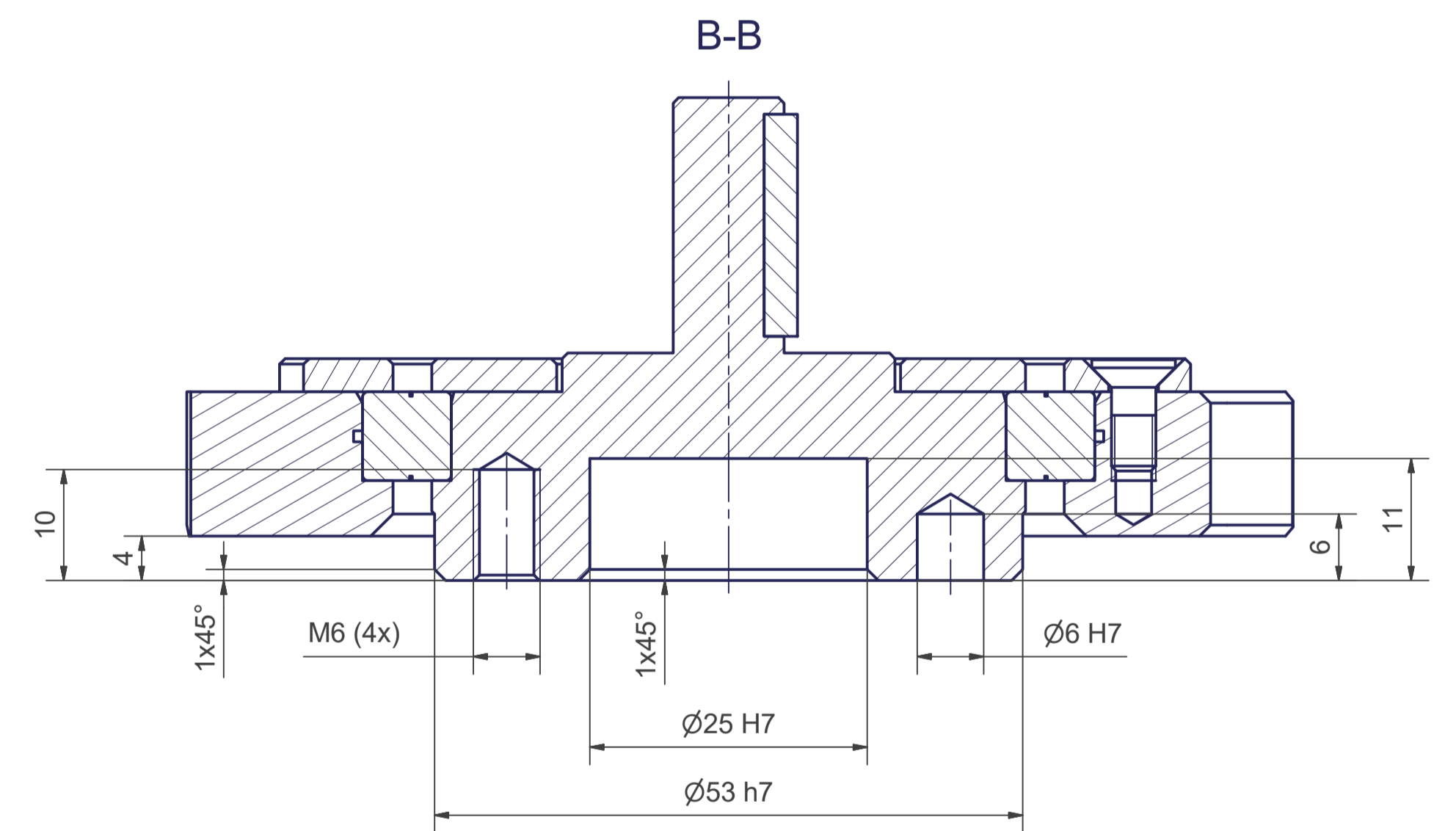
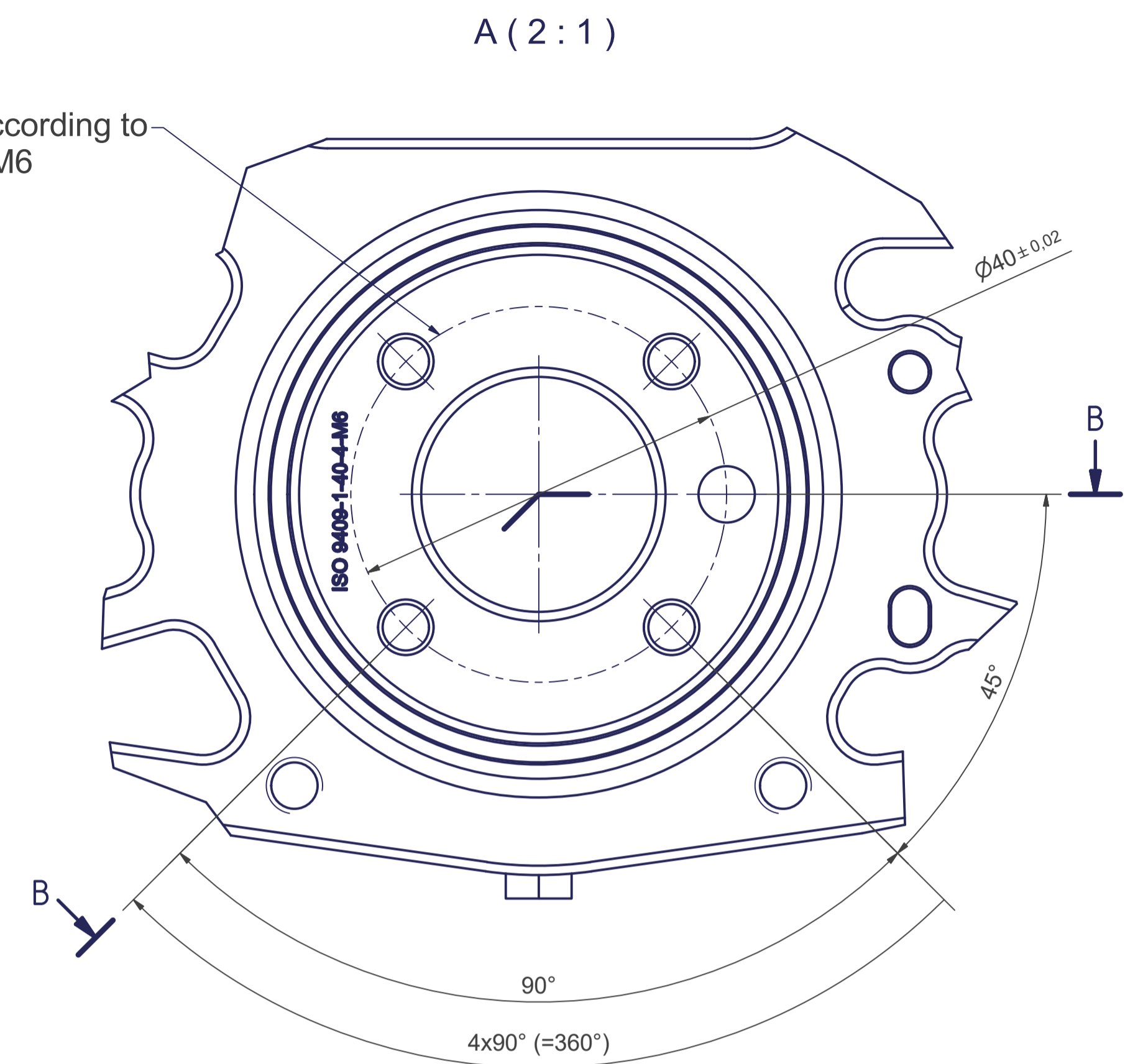


Tool Center Point
TCP (on the plane of the flange)

TCP - working range



Flange diagram according to
ISO 9409-1-40-4-M6



m= kg	A	p= bar
proj. storage surface = m ²	P= kW	\dot{V} = l/min
	U= V / Hz / Ph	
	I _{max} = A	A_00869

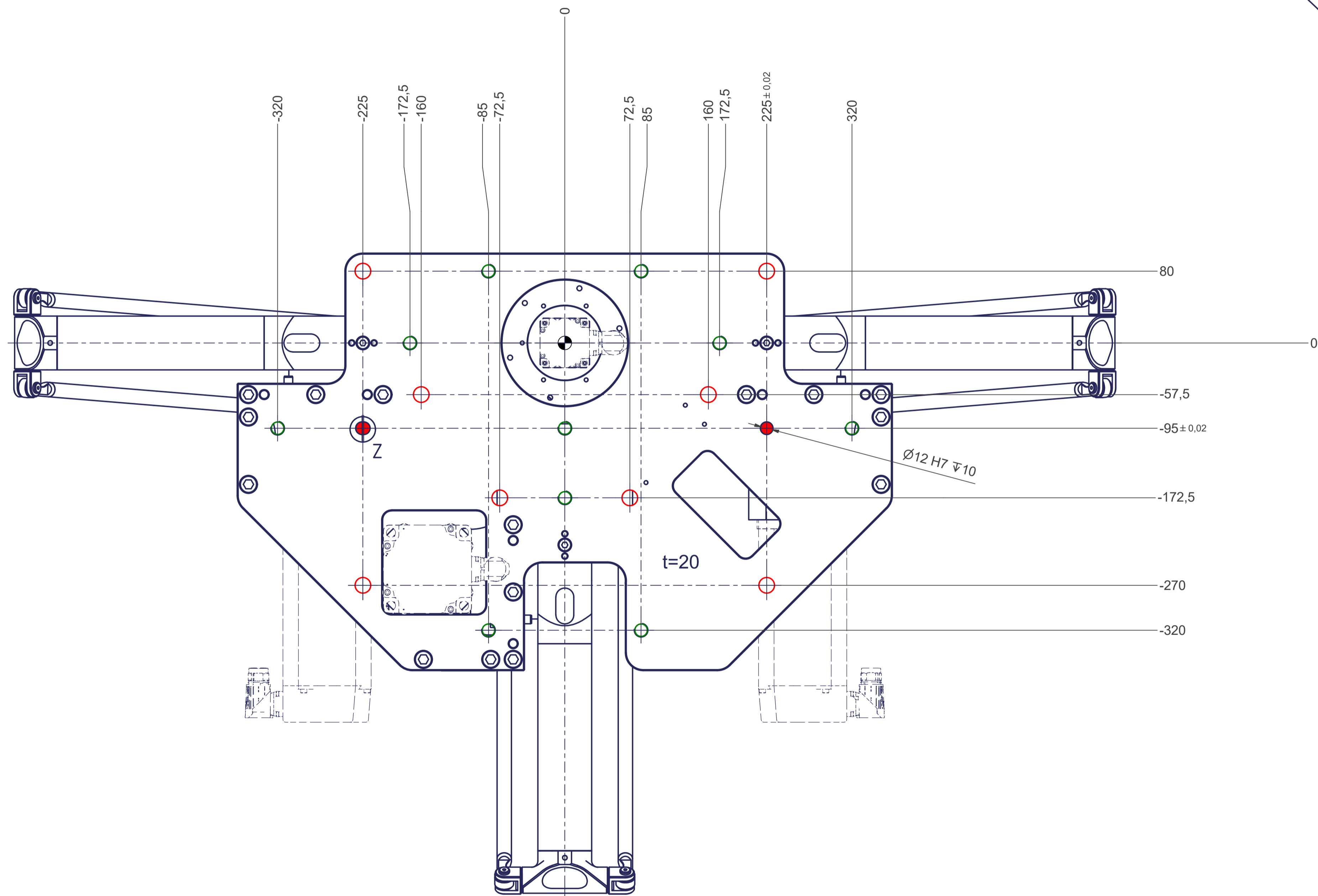
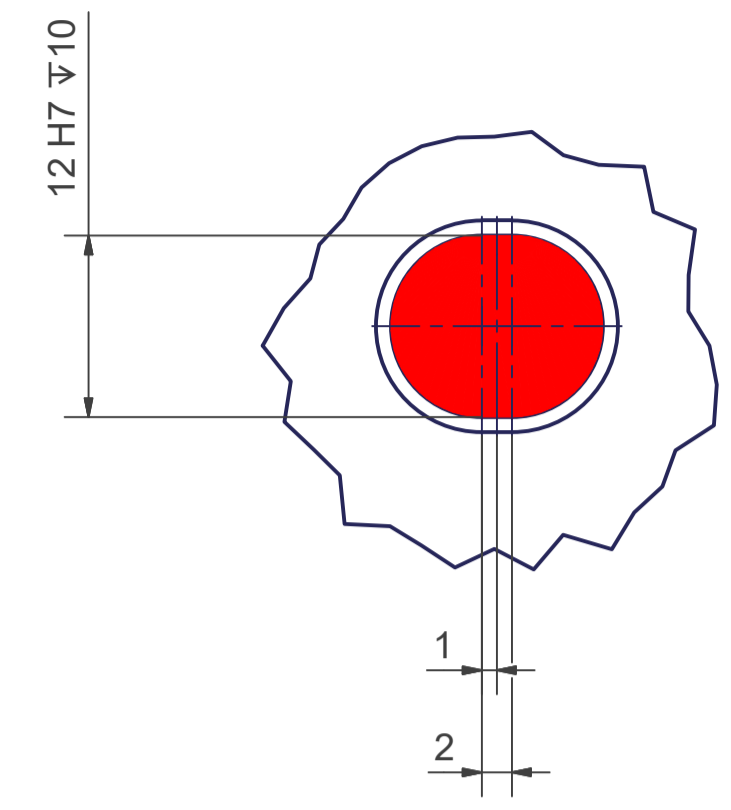
12 11 10 9 8 7 6 5 4 3 2 1

○ All fastening holes Ø17,5 mm for screws M16 (DIN ISO 4014/4017 -8.8) without washer. Fastening holes are coloured red.

● Drilling holes for locating pins are filled red. Recommended dimensions of locating pins: Ø12 h6

○ Thread holes for screws M16 are coloured green. The tightening torque for these screws (strength class 8.8) is 102 Nm.

Z (2:1)



12 11 10 9 8 7 6 5 4 3 2 1