

Depending on the drive type

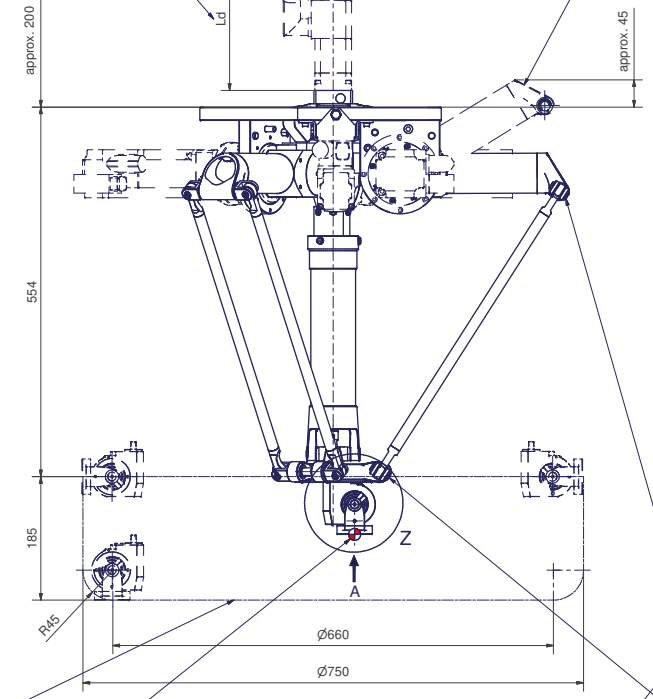
Wd

Ld

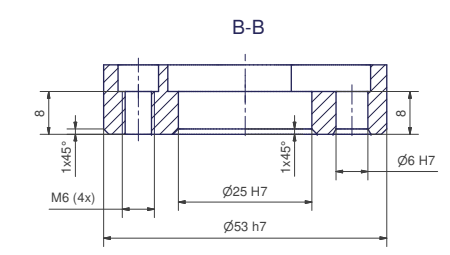
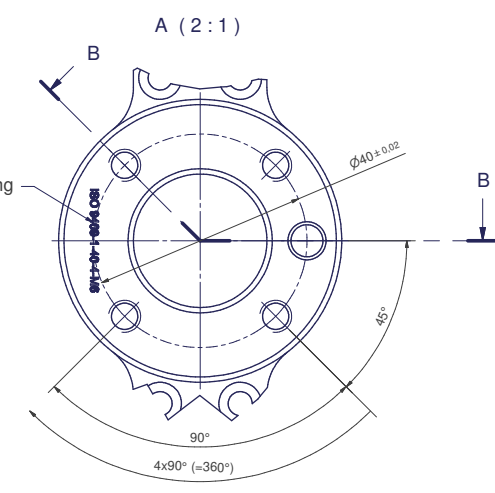
Maximum deflection of the upper arm

approx. 200

approx. 45



Flange diagram according to ISO 9409-1-40-4-M6



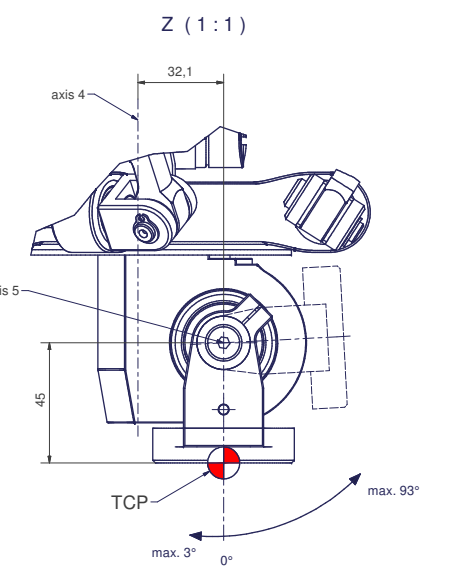
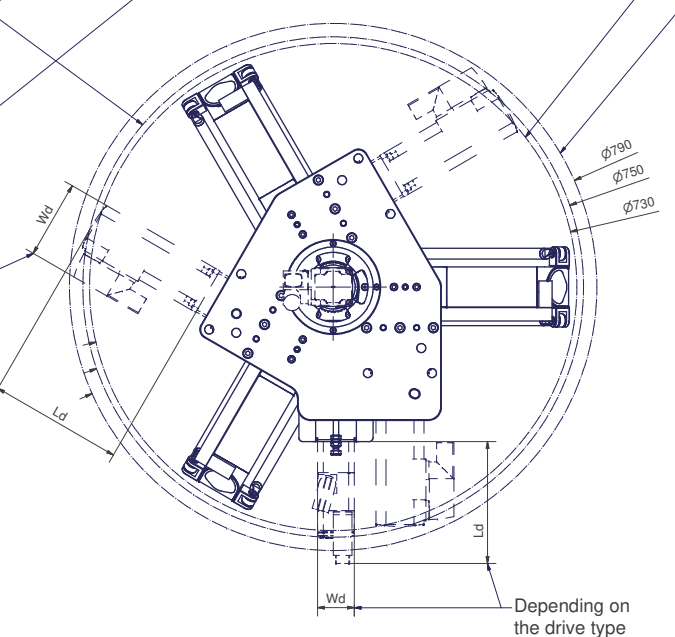
Interference contour from machine body

Maximum interference contour

TCP - working range

Tool Center Point
TCP (on the plane of the flange)



Depending on the drive type



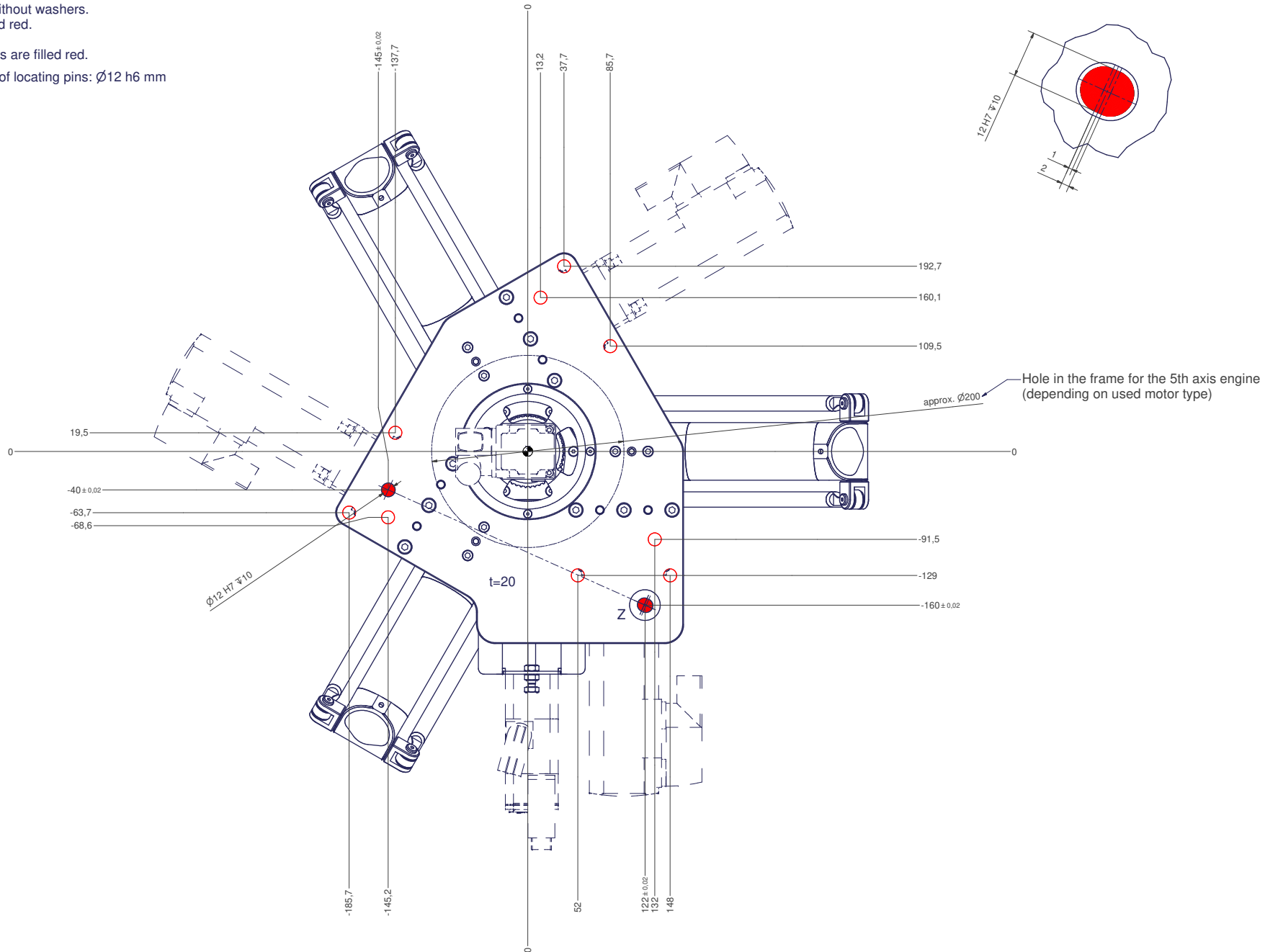
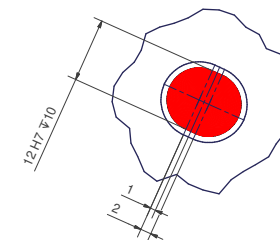
Connecting dimensions,
valid for article number A_00083.01

m= kg	A	p= bar
proj. storage surface = m²	P= kW	v= l/min
U=	V / Hz / Ph	
I _{max} =	A	

12 11 10 9 8 7 6 5 4 3 2 1

-  All fastening holes $\varnothing 13,5$ mm for screws M12 (DIN ISO 4014/4017 -8.8) without washers. Fastening holes are coloured red.
-  Drilling holes for locating pins are filled red. Recommended dimensions of locating pins: $\varnothing 12$ h6 mm

Z (2:1)



12 11 10 9 8 7 6 5 4 3 2 1