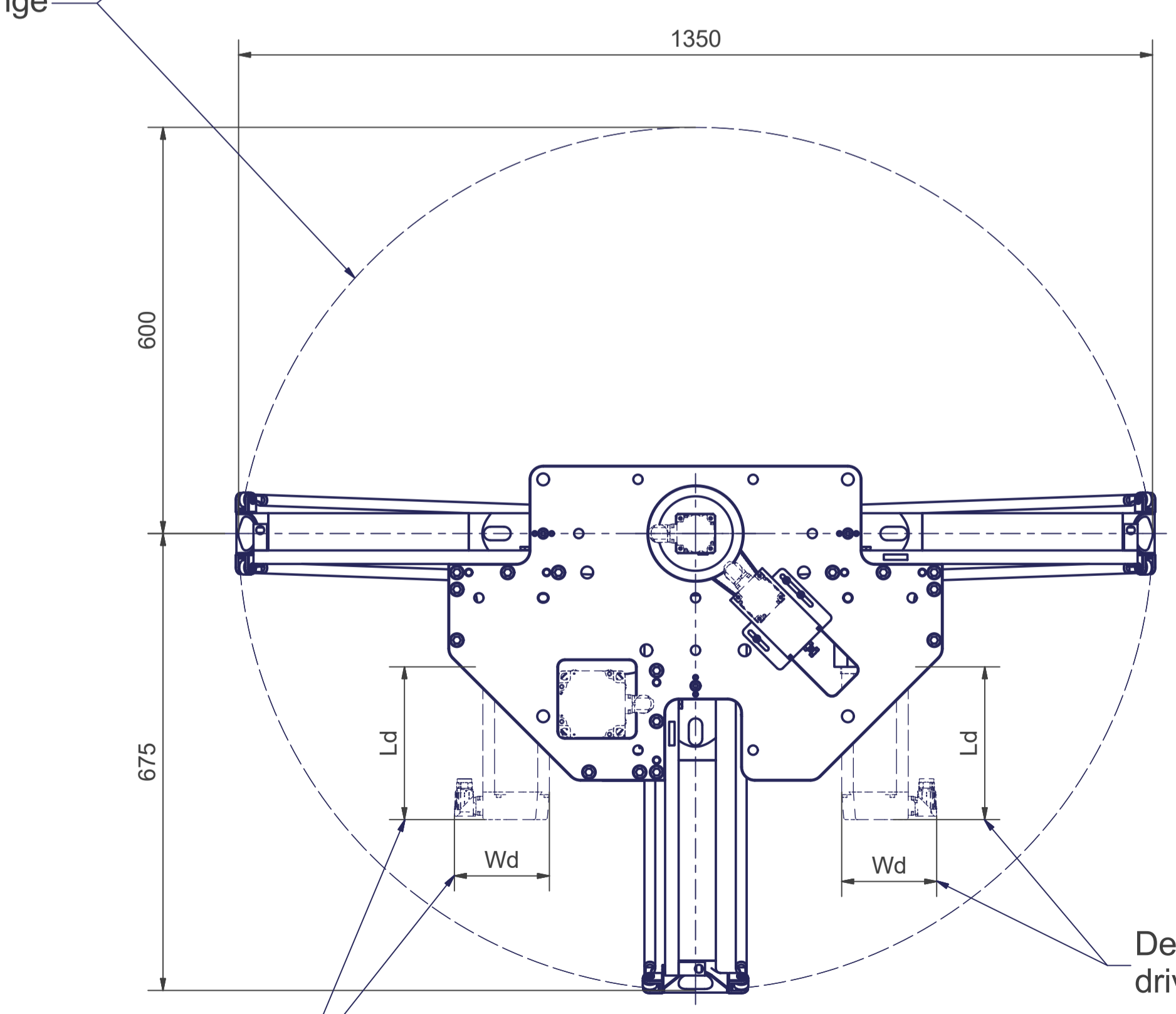


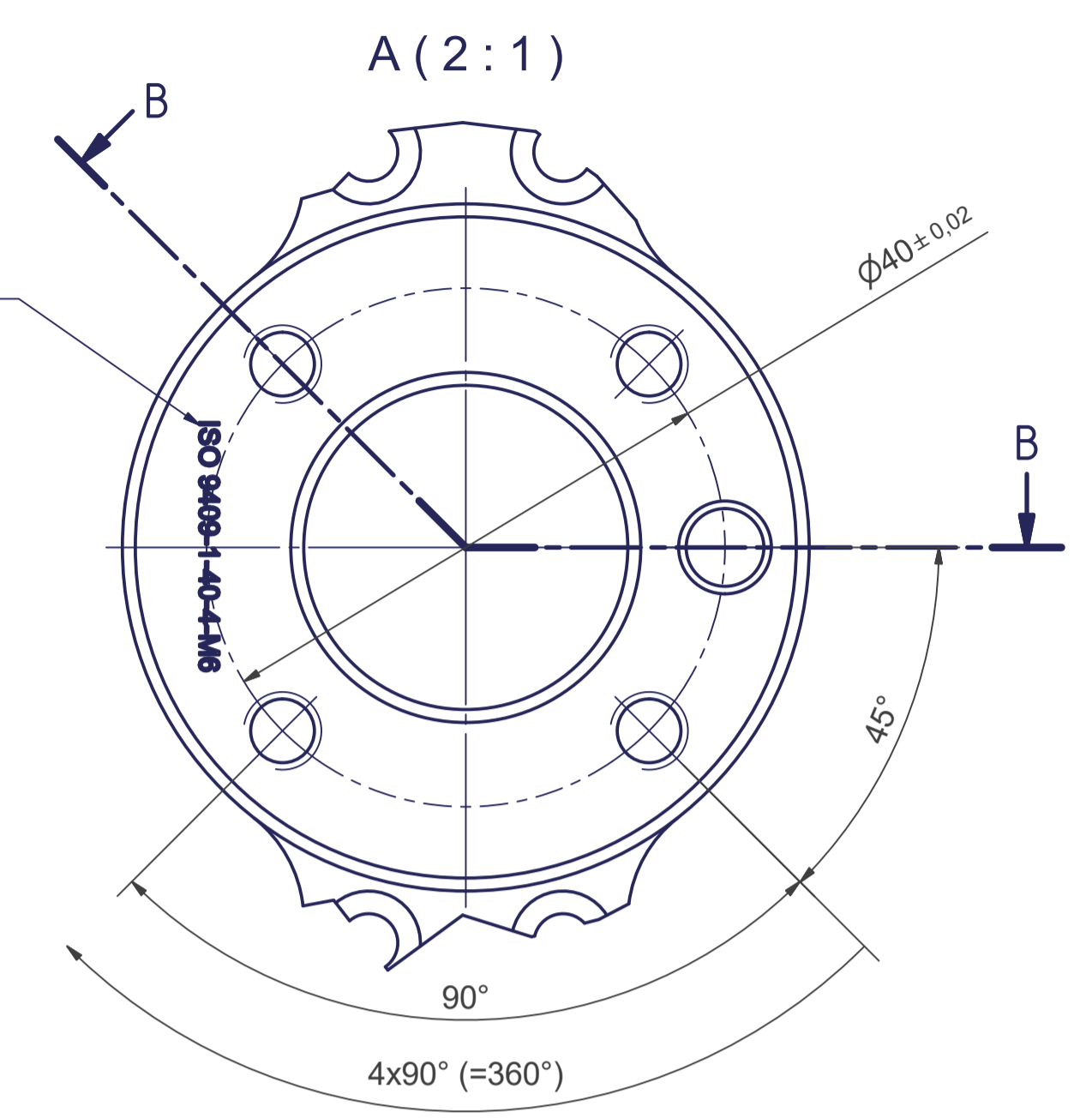
Tool Center Point
TCP (on the plane of the flange)

TCP - working range

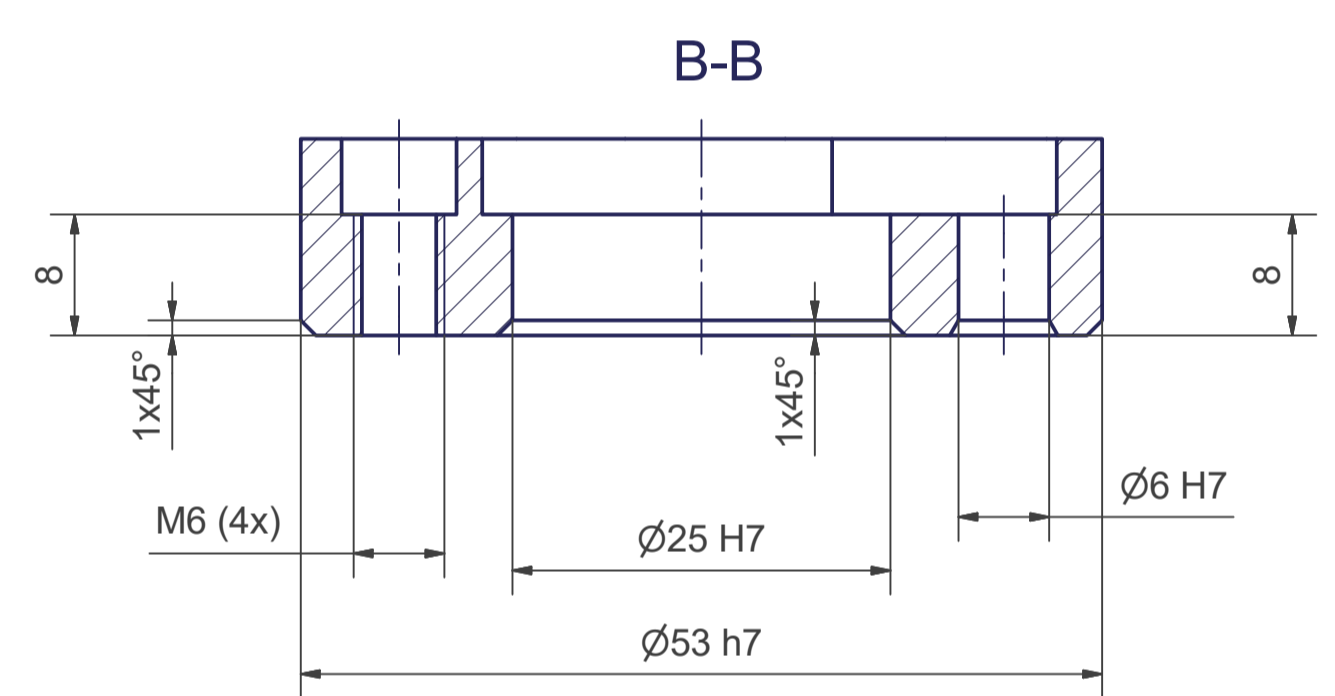


Depending on drive type

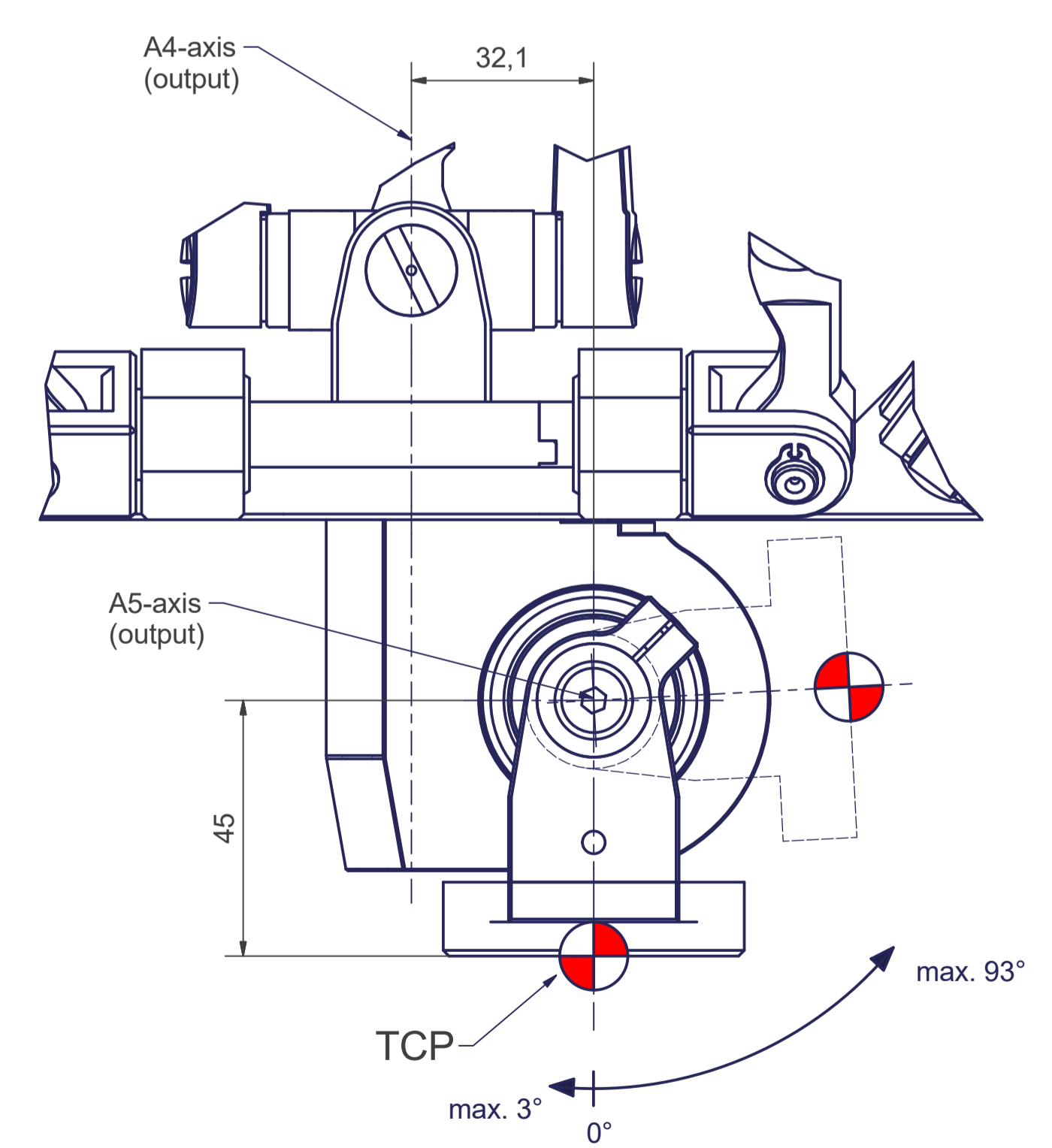
Depending on drive type



Flange diagram according to ISO 9409-1-40-4-M6



Z (1:1)



Connecting dimensions, valid for article number A_00871

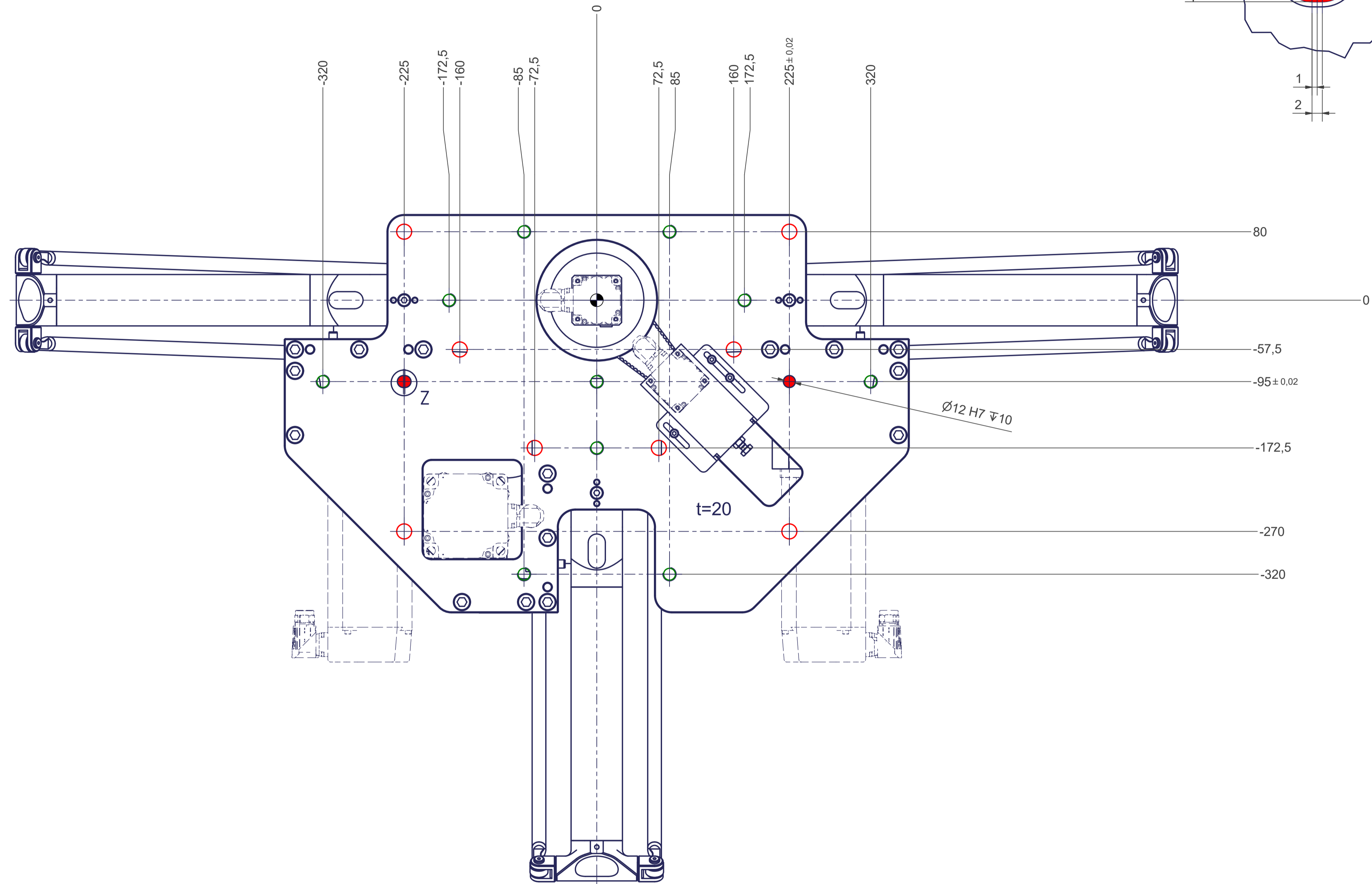
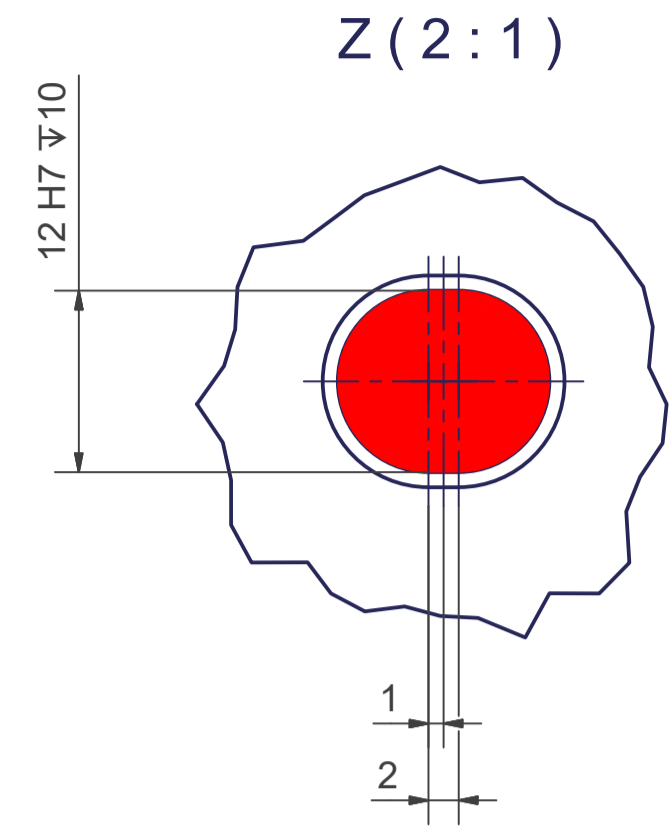
m= kg	A	p= bar
proj. storage surface = m²	P= kW	\dot{V} = l/min
First angle projection	U= V / Hz / Ph	
	Imax= A	

12 11 10 9 8 7 6 5 4 3 2 1

○ All fastening holes $\varnothing 17,5$ mm for screws M16 (DIN ISO 4014/4017 -8.8) without washer. Fastening holes are coloured red.

● Drilling holes for locating pins are filled red. Recommended dimensions of locating pins: $\varnothing 12$ h6

○ Thread holes for screws M16 are coloured green. The tightening torque for these screws (strength class 8.8) is 102 Nm.



12 11 10 9 8 7 6 5 4 3 2 1