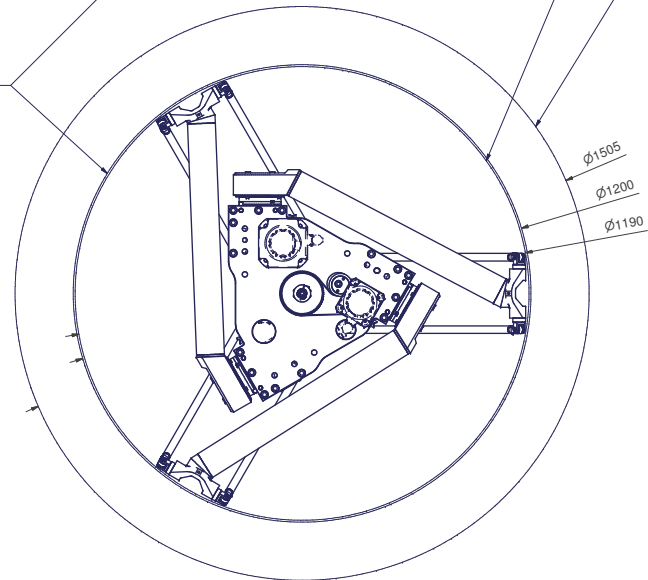
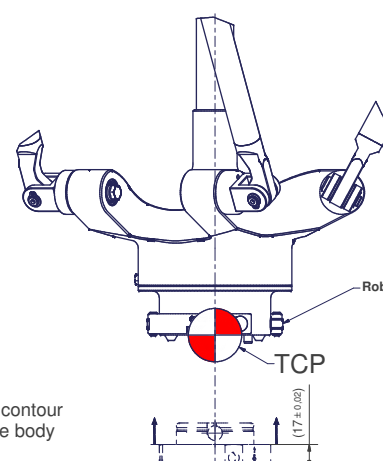


Tool Center Point
TCP (on the plane of the flange)

TCP - working range



Z (1:2)



OPTIONAL:
Tool-side change-adapter
MT_BGR00021657

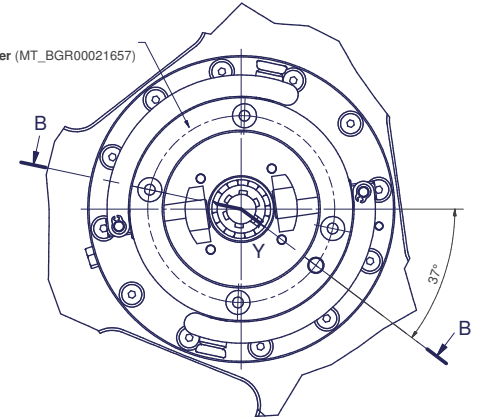
The mark "A" and "B" of the **Tool-side change-adapter** must fit with the mark "A" and "B" on the **Robot-side change-head**.

Interference contour from machine body

Maximum interference contour

Flange diagram - according to **tool-side change-adapter** (MT_BGR00021657)

A (1:1)

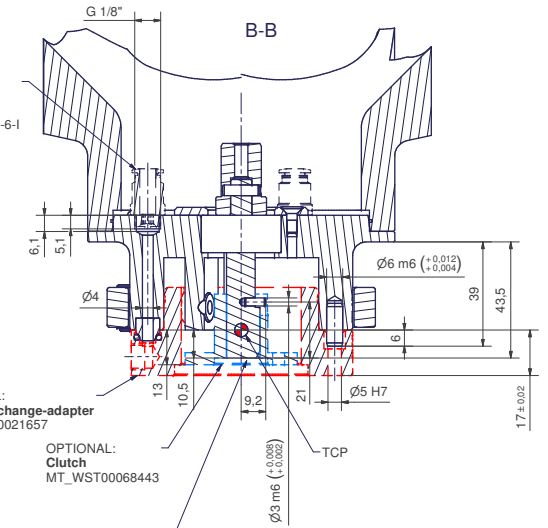


Robot-side change-head

TCP

Fitting - (not included) for example:
Fasto, Push-in fitting
Product name: QS-G1/8-6-1
Part number: 186107

B-B

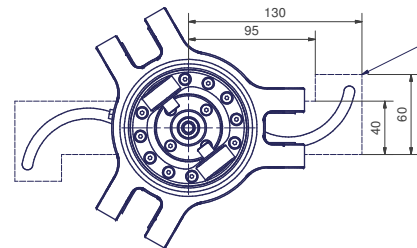
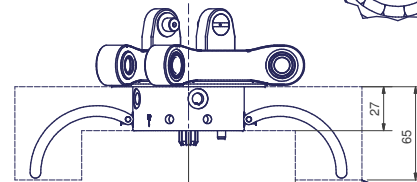
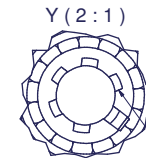


OPTIONAL:
Tool-side change-adapter
MT_BGR00021657

OPTIONAL:
Clutch
MT_WST00068443

Splined Shaft:
Similar to DIN ISO 14 - KW 11 x 14 according to **Clutch** (MT_WST00068443)

Y (2:1)



Interference contour for opening and closing the **robot-side change-head**

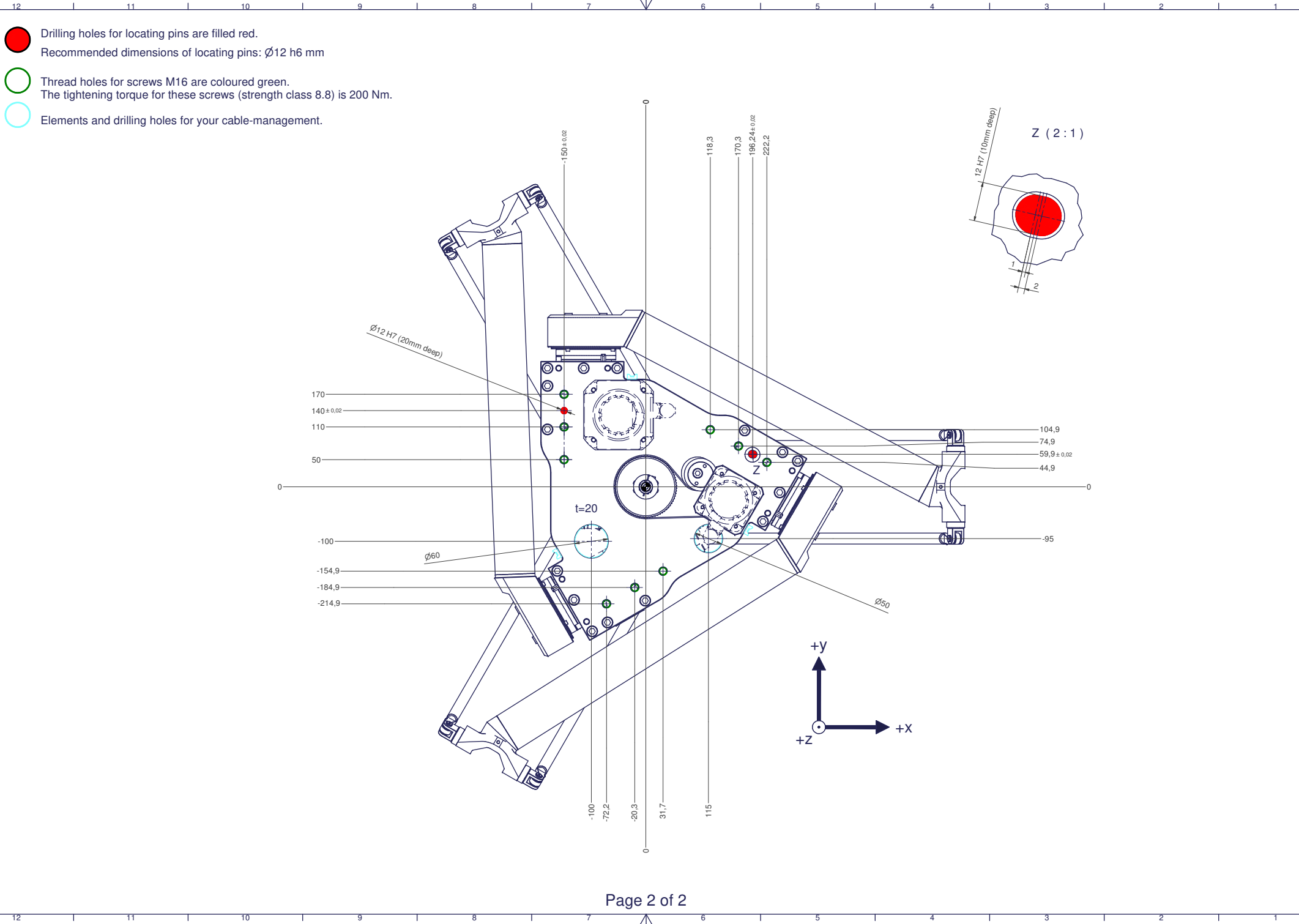
OPTIONAL:
Tool-side change-adapter MT_BGR00021657

Clutch MT_WST00068443



kg		A		bar	
m=	kg	A		p=	
projected storage surface =		m²	P=	kW	
		U=	V / Hz / Ph		Imax=
		A			





● Drilling holes for locating pins are filled red.
 Recommended dimensions of locating pins: Ø12 h6 mm

○ Thread holes for screws M16 are coloured green.
 The tightening torque for these screws (strength class 8.8) is 200 Nm.

○ Elements and drilling holes for your cable-management.

