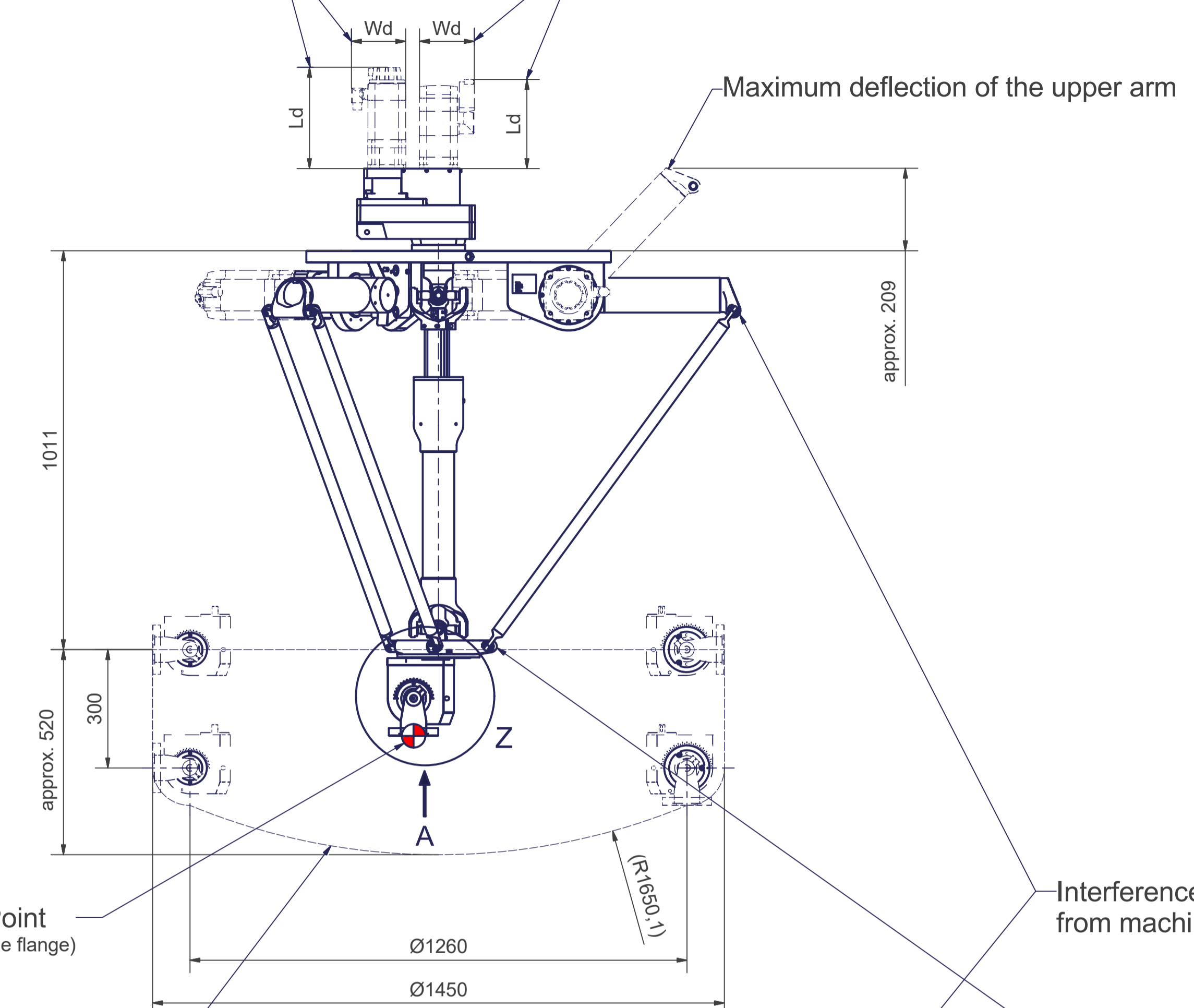
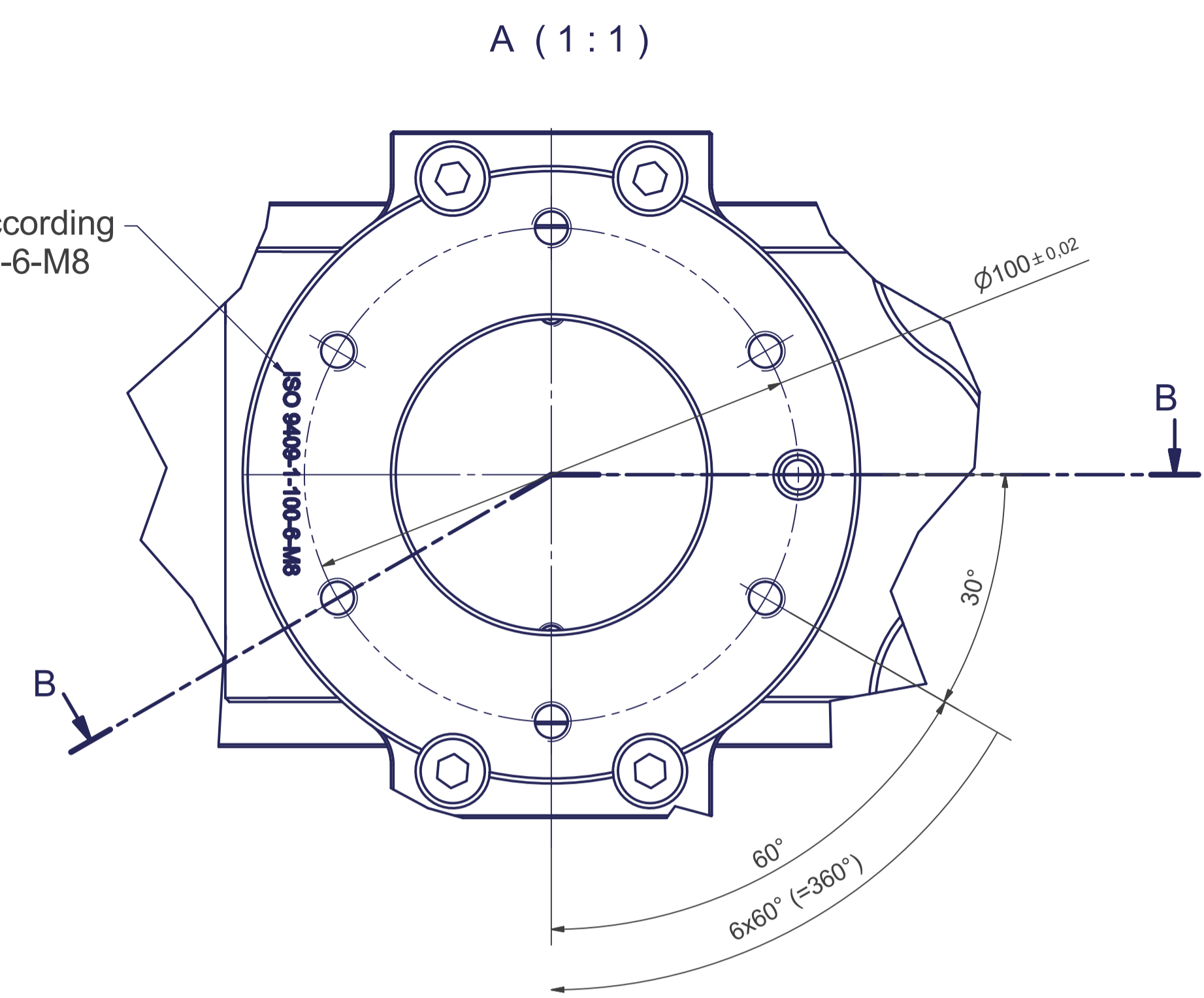


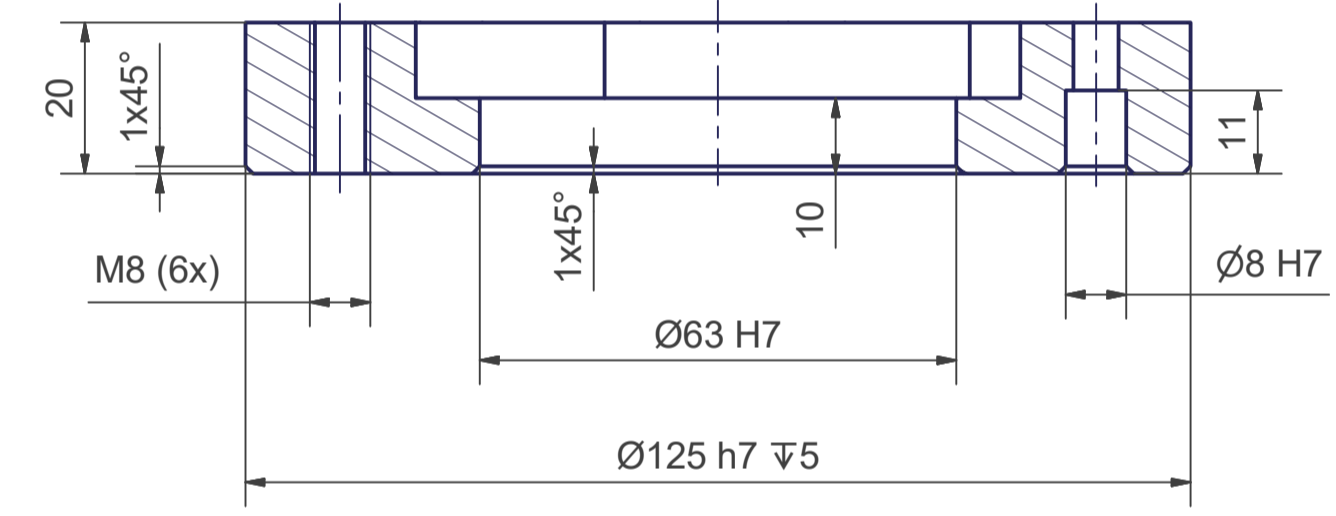
Depending on the drive type



Flange diagram according to ISO 9409-1-100-6-M8

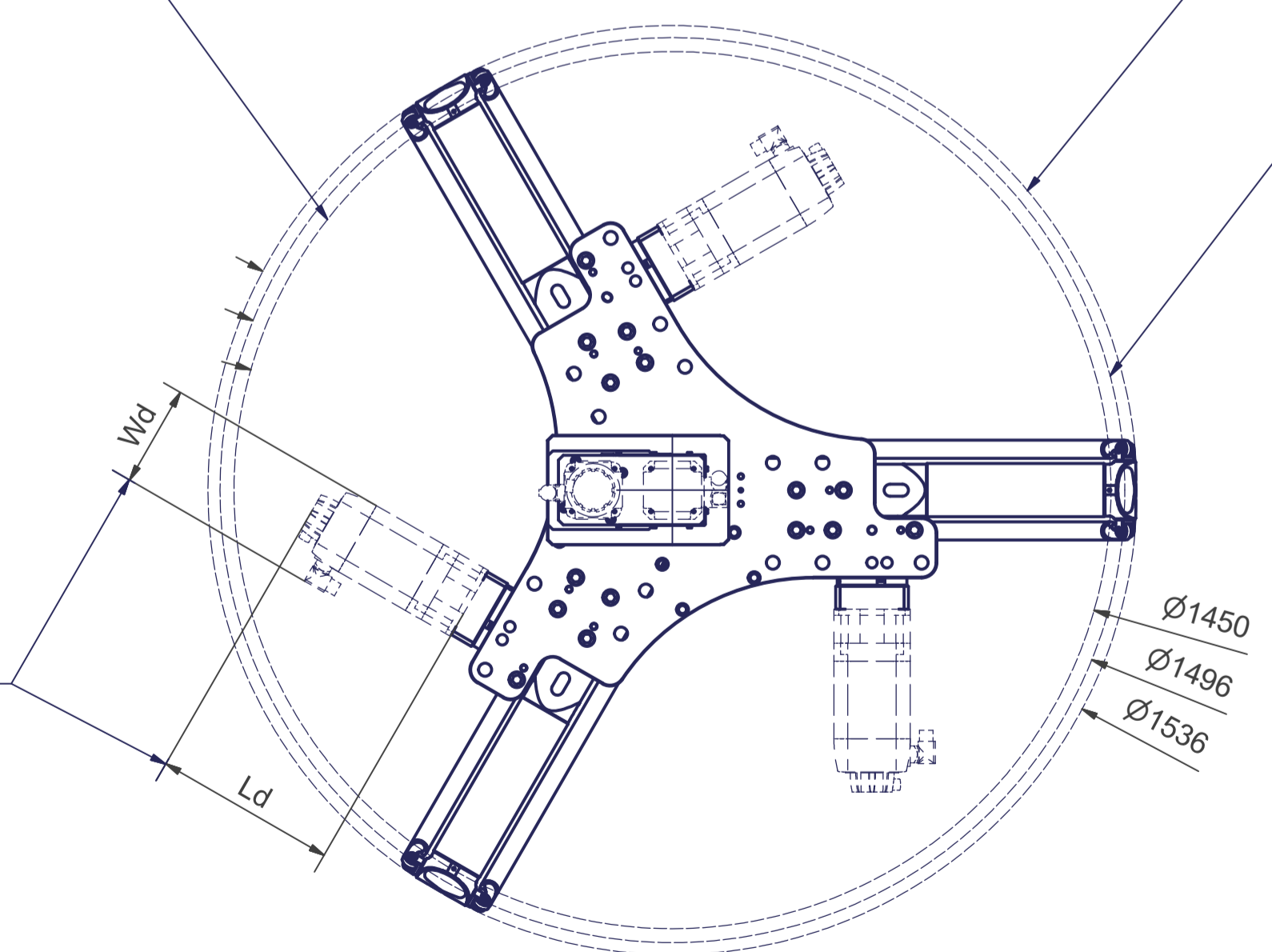


B-B

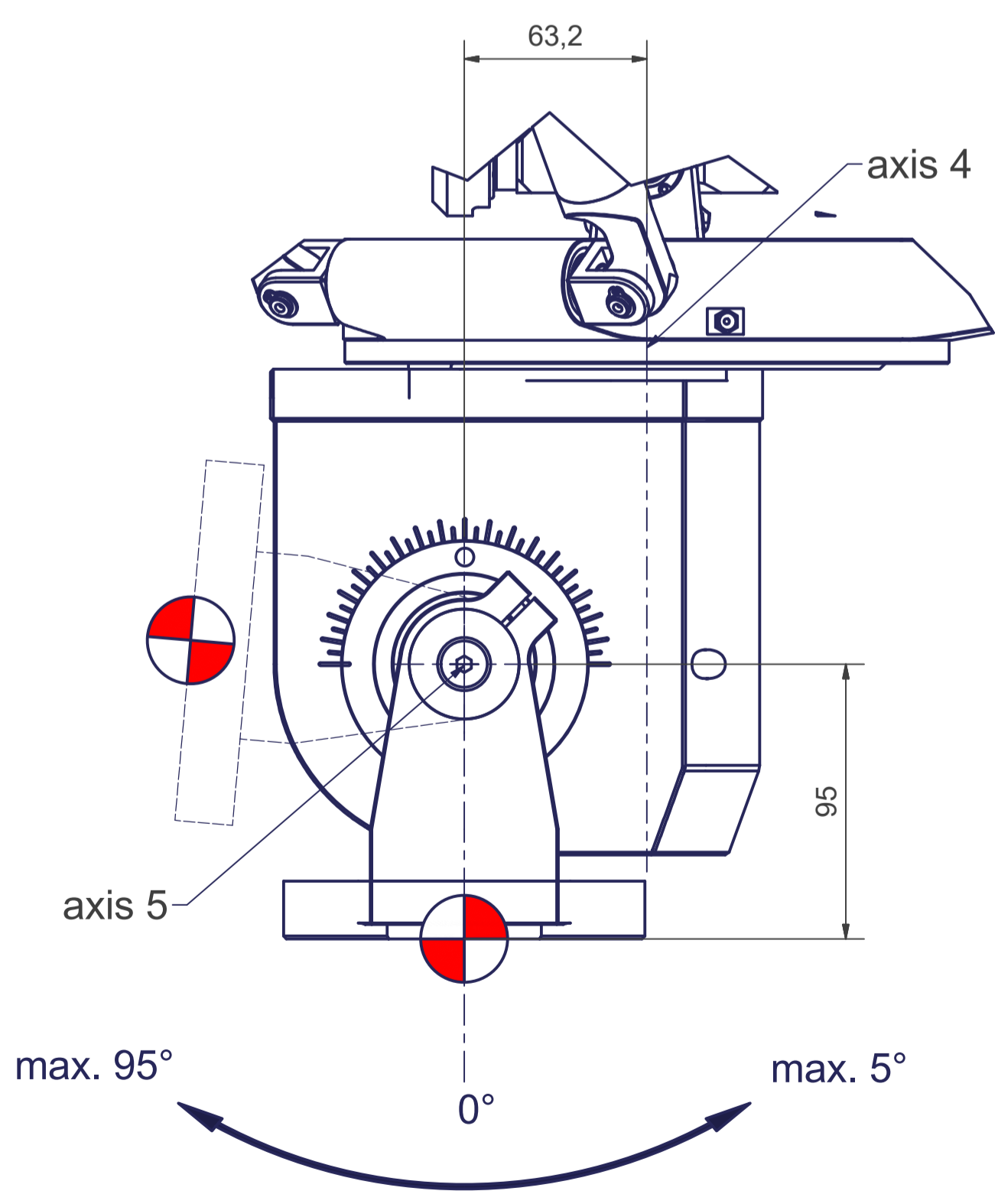


Tool Center Point
TCP (on the plane of the flange)

TCP - working range



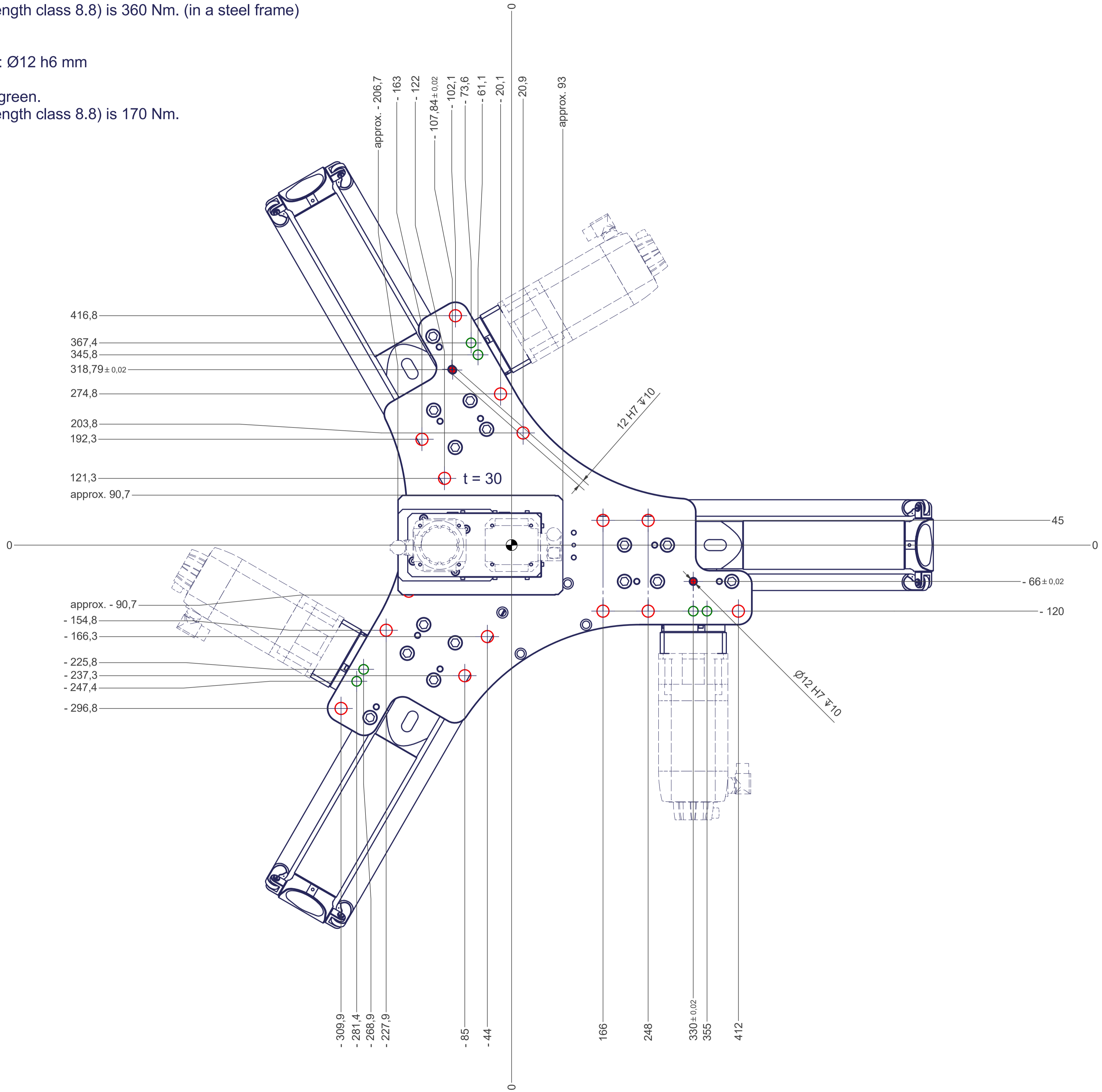
Z (1:2)



m= kg	A	p= bar
projected storage surface = m ²	P= kW	v̇= l/min
	U= V / Hz / Ph	
	I _{max} = A	A_00816

12 11 10 9 8 7 6 5 4 3 2 1

- All fastening holes Ø22mm for screws M20 (DIN ISO 4014/4017 -8.8) without washer.
Fastening holes are coloured red.
The tightening torque for these screws (strength class 8.8) is 360 Nm. (in a steel frame)
- Drilling holes for locating pins are filled red.
Recommended dimensions of locating pins: Ø12 h6 mm
- Thread holes for screws M20 are coloured green.
The tightening torque for these screws (strength class 8.8) is 170 Nm.



12 11 10 9 8 7 6 5 4 3 2 1