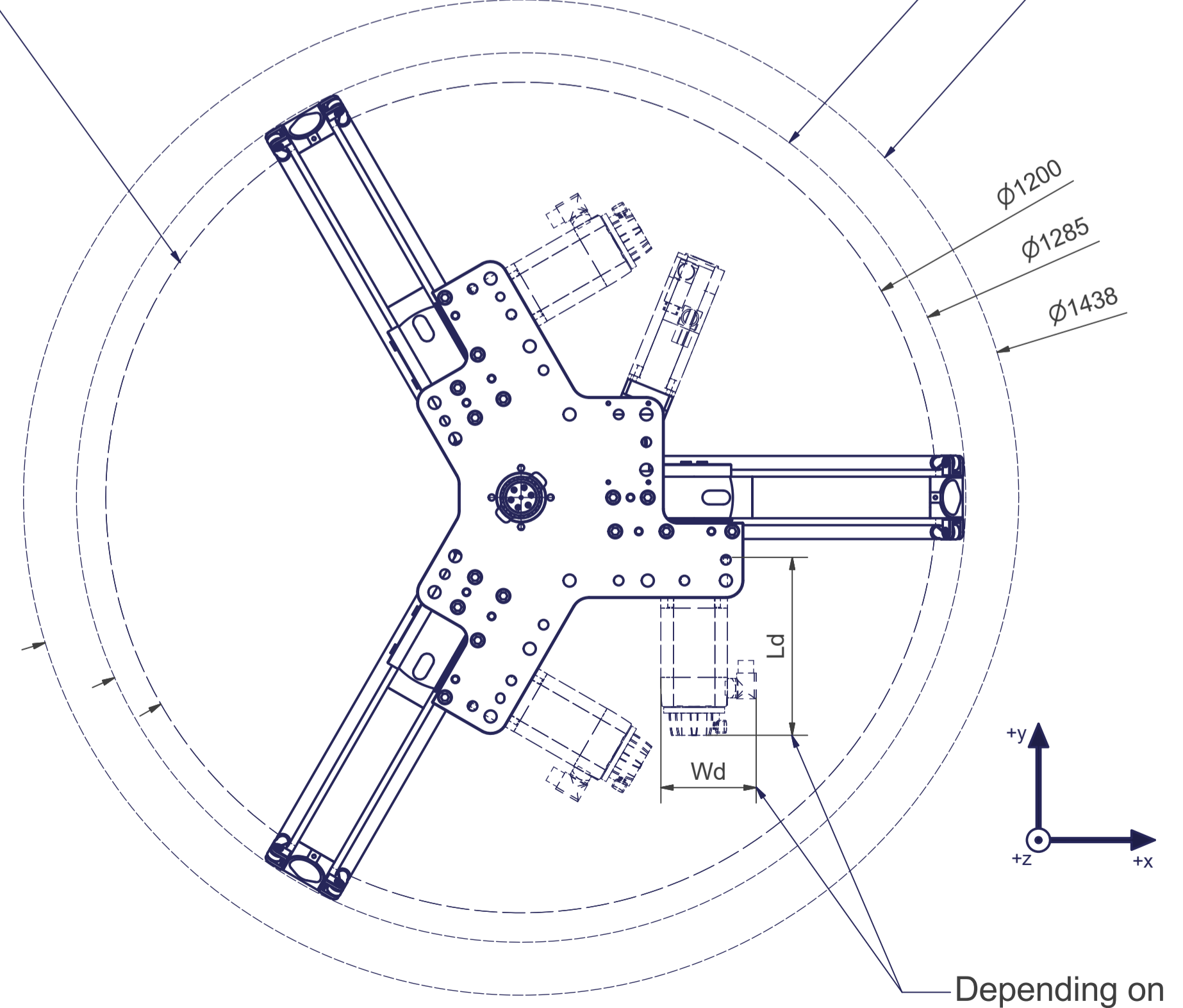


Interference contour from machine body

Maximum interference contour

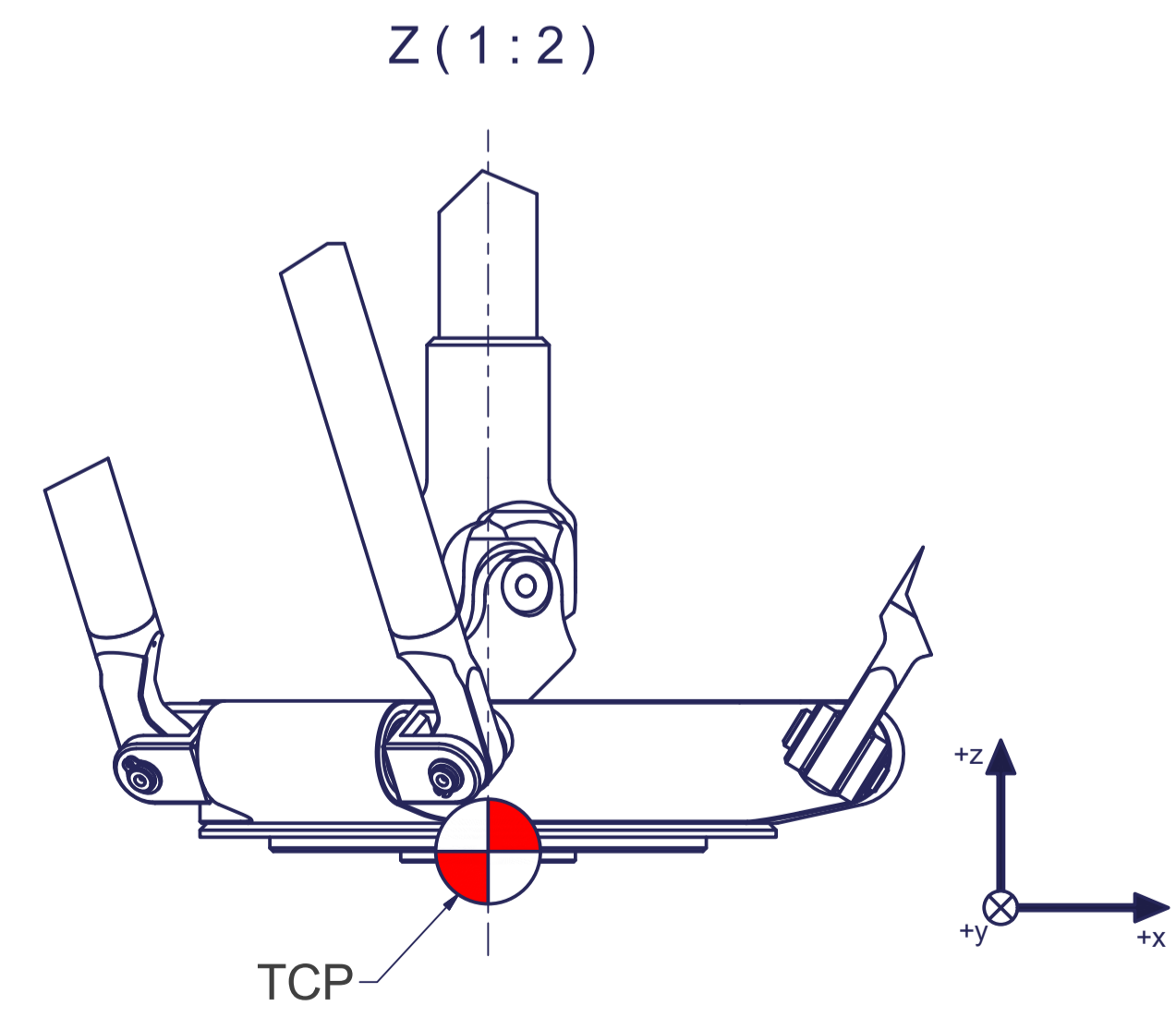
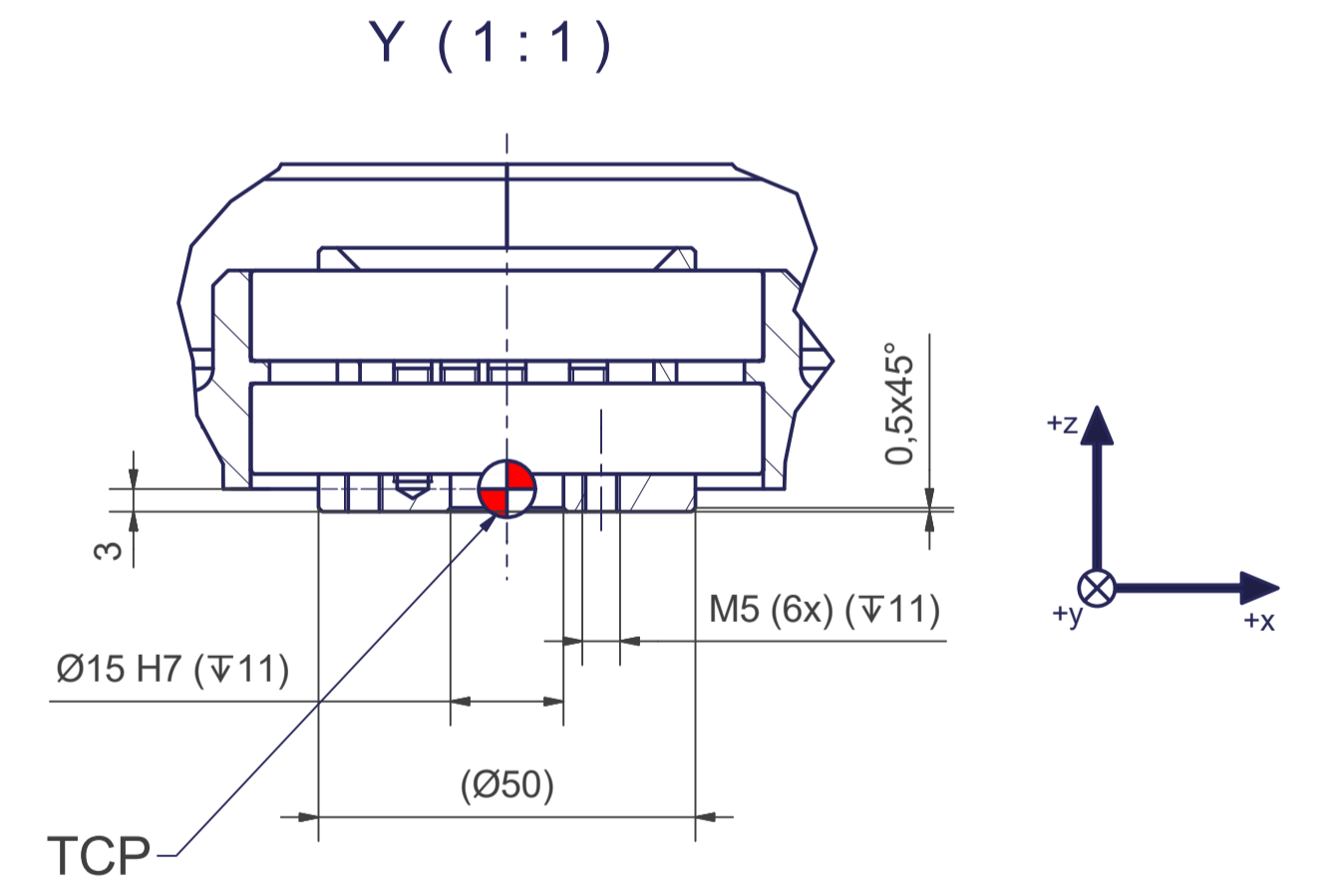
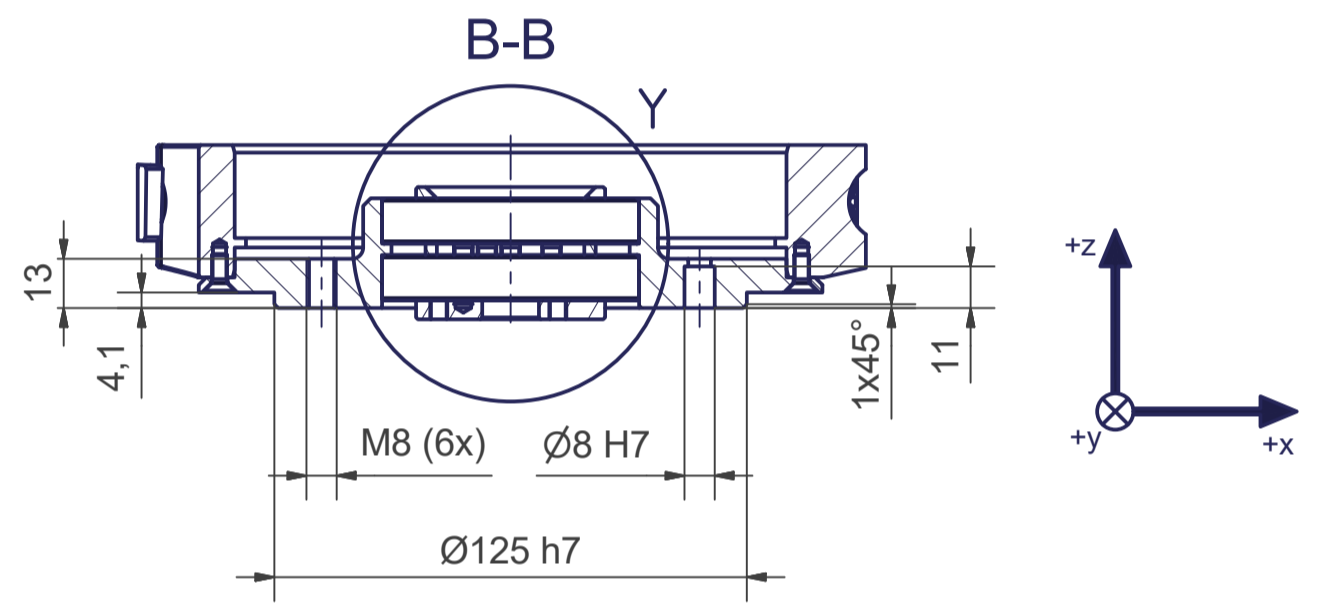
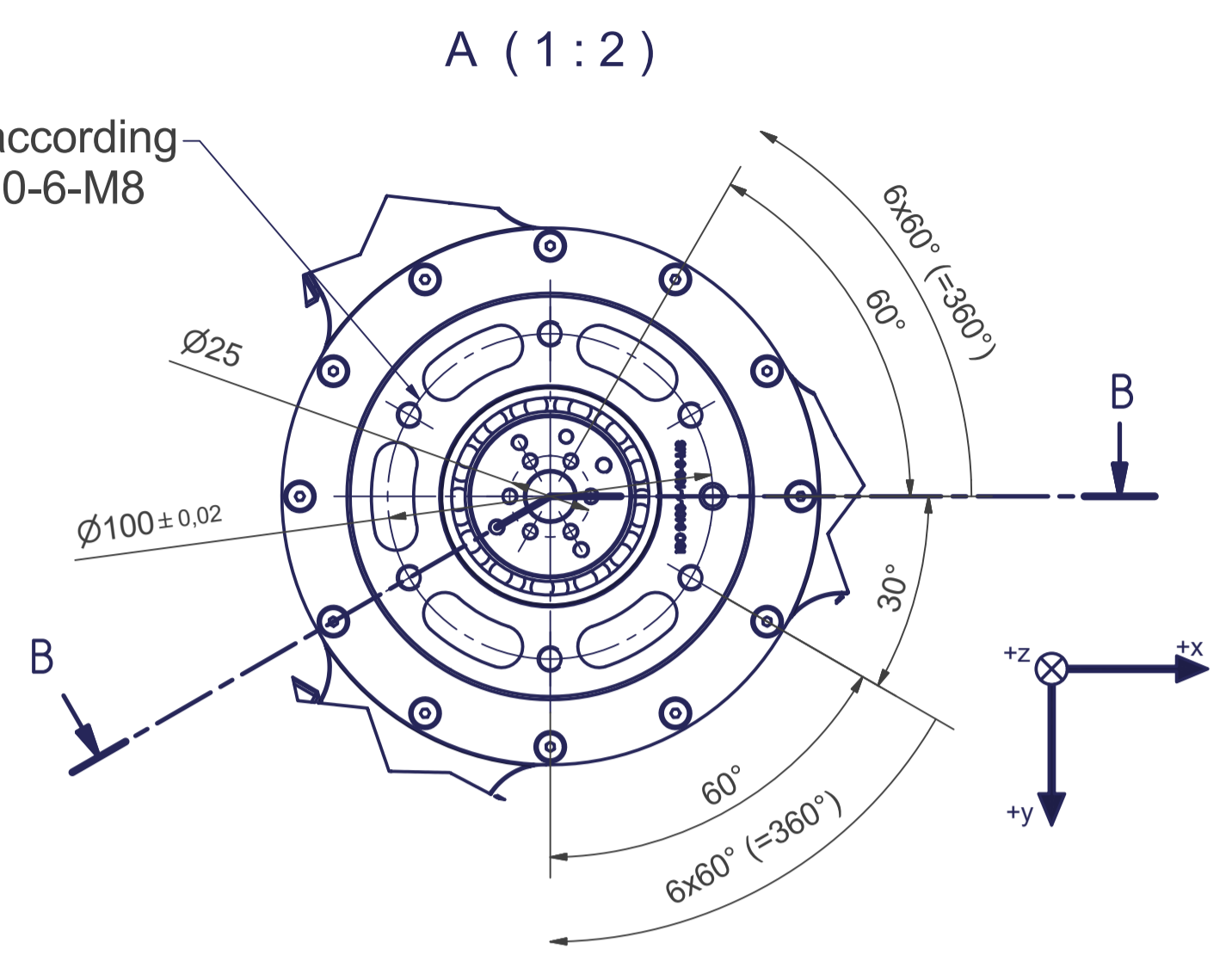
Tool Center Point
TCP (on the plane of the flange)

TCP - working range



Depending on the drive type

Flange diagram according to ISO 9409-1-100-6-M8



Connecting dimensions, valid for article number A_00851-T1

m= kg	A	p= bar
proj. storage surface = m²		v̇= l/min
First angle projection	P= kW	
	U= V / Hz / Ph	
	Imax= A	

12

11

10

9

8

7

6

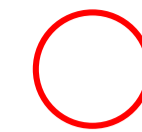
5

4

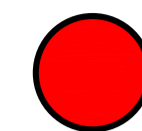
3

2

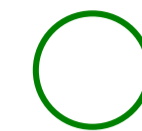
1



Fastening holes $\varnothing 17,5\text{mm}$ for screws M16 (DIN ISO 4014/4017 -8.8) without washer. Fastening holes are coloured red.



Drilling holes for locating pins are filled red. Recommended dimensions of locating pins: $\varnothing 12\text{ h6}$.



Thread holes for screws M16 are coloured green. The tightening torque for these screws (strength class 8.8) is 200 Nm.

