

approx. 72
690
approx. 315
200

Maximum deflection of the upper arm

Flange diagram according to ISO 9409-1-40-4-M6

A (2:1)

4x90° (=360°)

90°

AS

90°

4x90° (=360°)

Interference contour from machine body

Maximum interference contour

Tool Center Point
TCP (on the plane of the flange)

TCP - working range

Ø900

(R337,93)

+z

+y

+x

B-B

10

5

1x45°

M6 (4x)

6

Ø6 H7

Ø53 h7

+z

+y

+x

Z (1:1)

TCP

+z

+y

+x

Y (2:1)

4

0.5x45°

Ø8 H7

M4 (4x)

(Ø23)

6

Depending on the drive type

Wd

Ld

Wd

Ld

Depending on the drive type

+y

+z

+x

Connecting dimensions, valid for article number A_00085-T1

m= kg	A	p= bar
proj. storage surface = m²		v̇= l/min
First angle projection	P= kW	
	U= V / Hz / Ph	
	lmax= A	

12

11

10

9

8

7

6

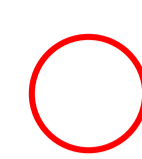
5

4

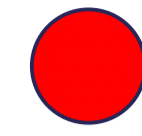
3

2

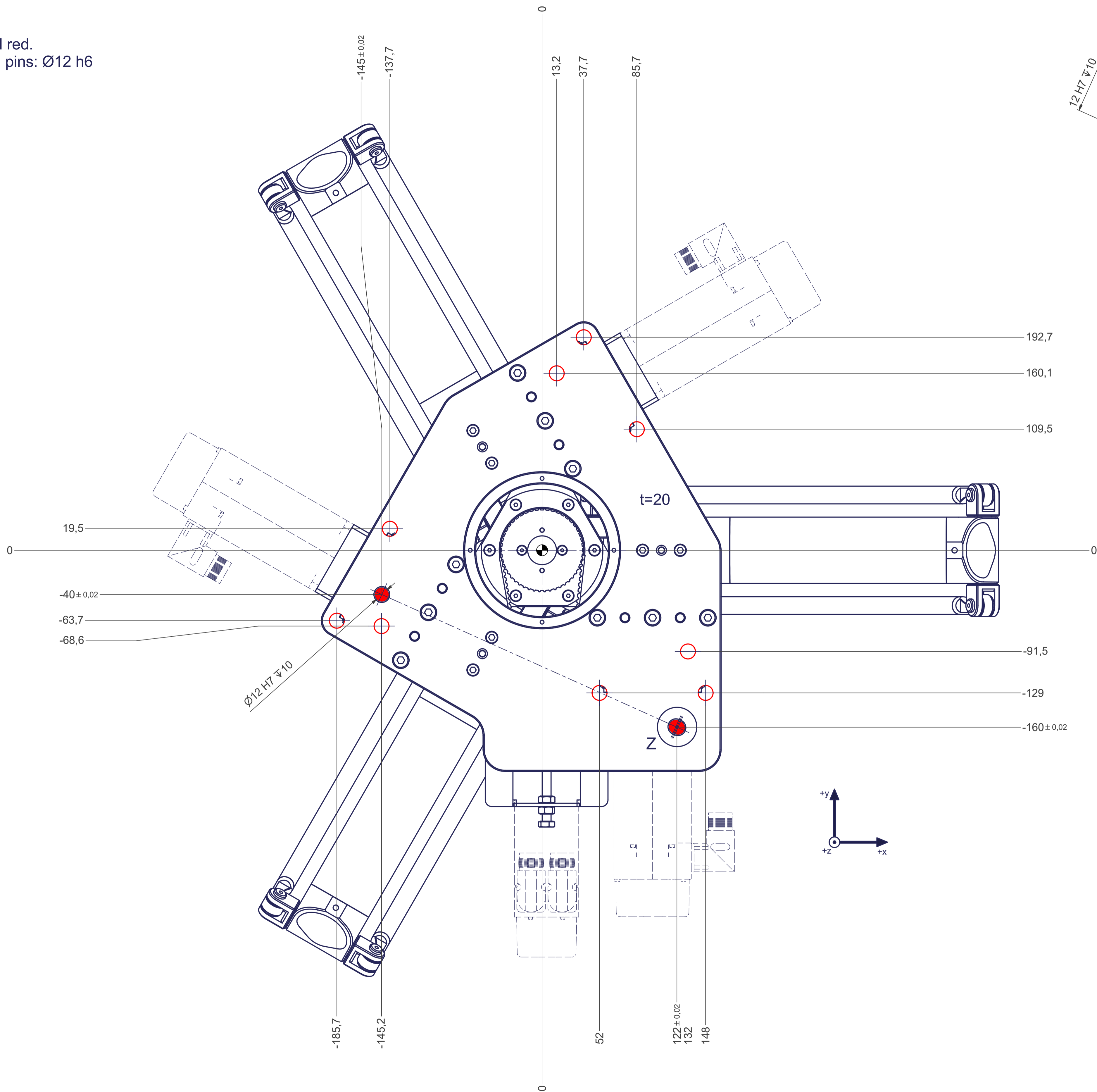
1



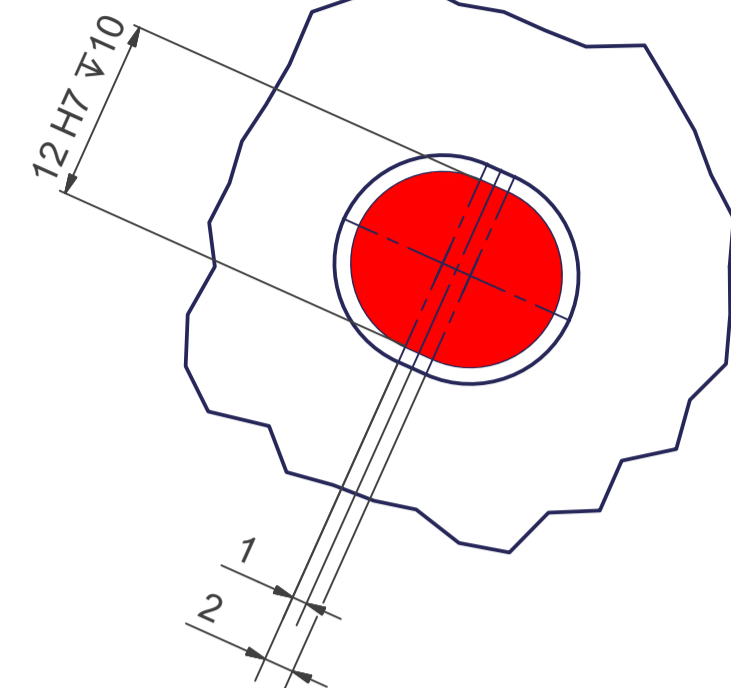
All fastening holes $\varnothing 13,5$ mm for screws M12 (DIN ISO 4014/4017 -8.8) without washers. Fastening holes are coloured red.



Drilling holes for locating pins are filled red. Recommended dimensions of locating pins: $\varnothing 12$ h6



Z (2:1)



H

G

F

E

D

C

B

A

H

G

F

E

D

C

B

A

12

11

10

9

8

7

6

5

4

3

2

1