

## DELTA RL3-T1-ATS-1800-50kg

Article number: A\_00857-T1-ATS/-X-FO

Lubricant variant: Food-grade lubricants (FO)



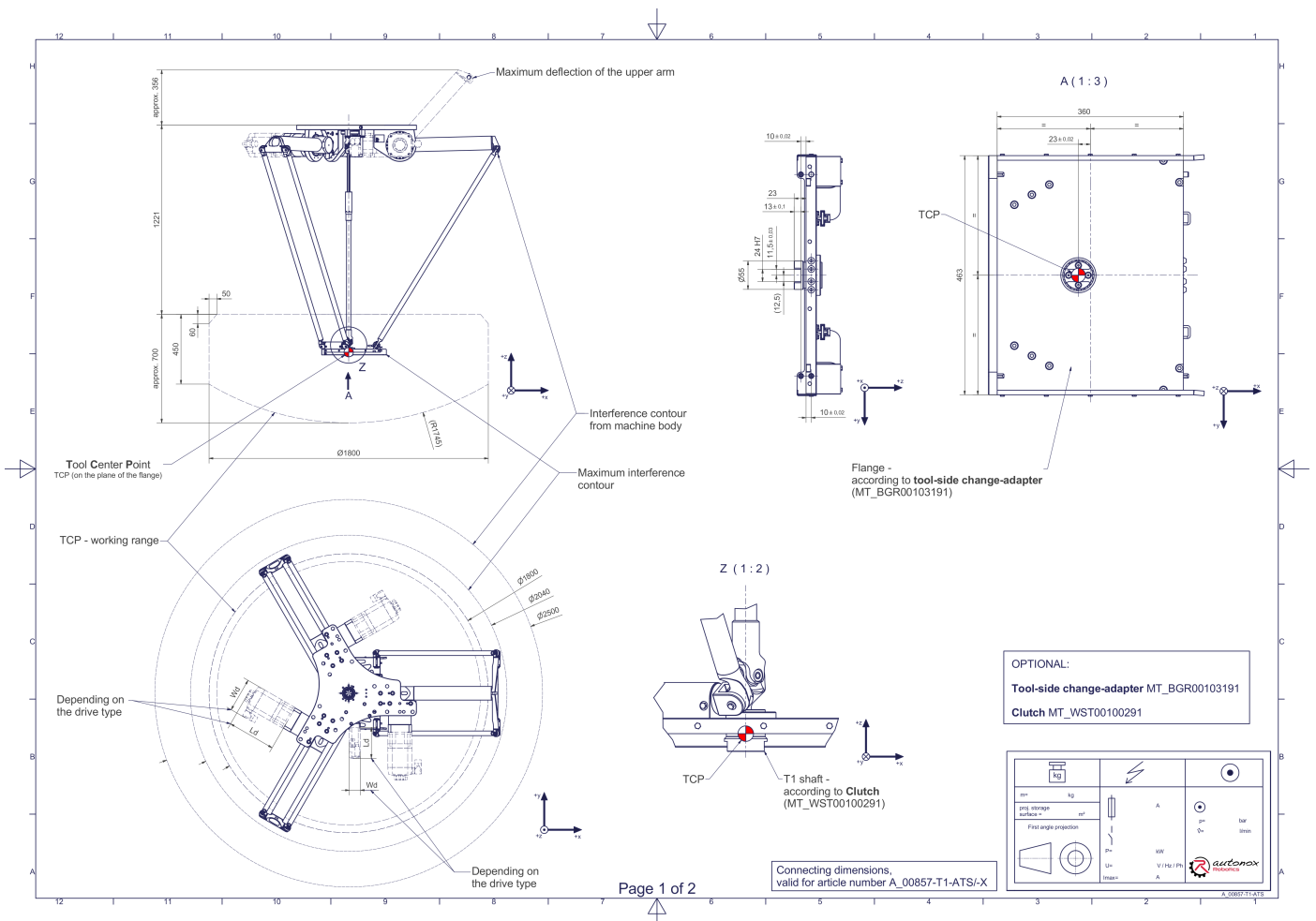
### Description:

This type of robot is based on the principle of parallel kinematics. All drives are mounted in a fixed position on the robot head. Motor cables are not moved. The robot has three (3) translational degrees of freedom. The article number extension 'ATS/-X' indicates the joint direction of the integrated tool change system (see product pictures).

### Scope of delivery:

Robot mechanics incl. gearbox, Servo motor adapter, Threaded protection caps, Transport and packing instructions

### Connecting dimensions:



**Downloads:** [Connecting dimensions \(PDF\)](#), [3D model \(STP\)](#), [3D model \(PDF\)](#)

We refer to our [General Terms of Sale and Supply](#), [Terms of use](#) and [Disclaimer and Copyright notices](#).

## Technical specifications:

Field of application	Standard (not hygienic)
Kinematics	Parallel
Translatory Degrees of Freedom (X,Y,Z)	3
Rotational Degrees of Freedom ( $\alpha, \beta, \gamma$ )	0
Nominal payload [kg   lbs] *	50   110.2
Working area-diameter [mm   in]	1800   70.9
Working height outside [mm   in]	450   17.7
Working height center [mm   in]	700   27.6
Output type of the tool actuation	Flange (T)
Number of the tool actuation (telescopic shaft(s))	1
Manual tool changing system ATS	Fourfold media transmission (Compressed air 6 bar   87.0 psi / vacuum -850 mbar   -12.3 psi / min. inner- $\varnothing$ : 6 mm   0.24 in)
Max. acceleration torque of the tool actuation T/Ts1 at the output [Nm   in.lbs]	40   354.0
Nominal torque of the tool actuation T/Ts1 at the output [Nm   in.lbs]	33   292.1
Max. speed of the tool actuation T/Ts1 at the output [1/min]	225
Nominal speed of the tool actuation T/Ts1 at the output [1/min]	150
Bearing type of the telescopic shaft(s)	Roller bearing
Bearing type of the arm joints	Roller bearing
Lubricants of the bearings	Food-grade (FO)
Lubricants of the gearboxes	Food-grade (FO)
Cleaning	No high pressure
Ambient temperature [ $^{\circ}$ C   $^{\circ}$ F]	0 to +40   +32 to +104
Relative humidity level [%]	95 (free of condensation)
Mounting position	Floor, Ceiling, Wall (on request), Angle (on request)

\* All given values are nominal values (nominal payload referred to a nominal performance) and can vary under realworld conditions depending on the application (tool specifications, load distances, reduction (partly) of the nominal performance when using food-grade lubricants, ...). Please consider our technical data sheets regarding the load capacity.