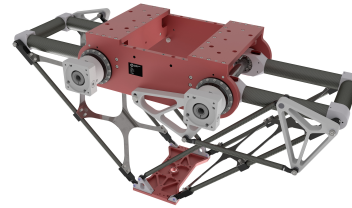


# DuoPod RV2-900-40kg

Article number: A\_00090-FO

Lubricant variant: Food-grade lubricants (FO)



**Description:**

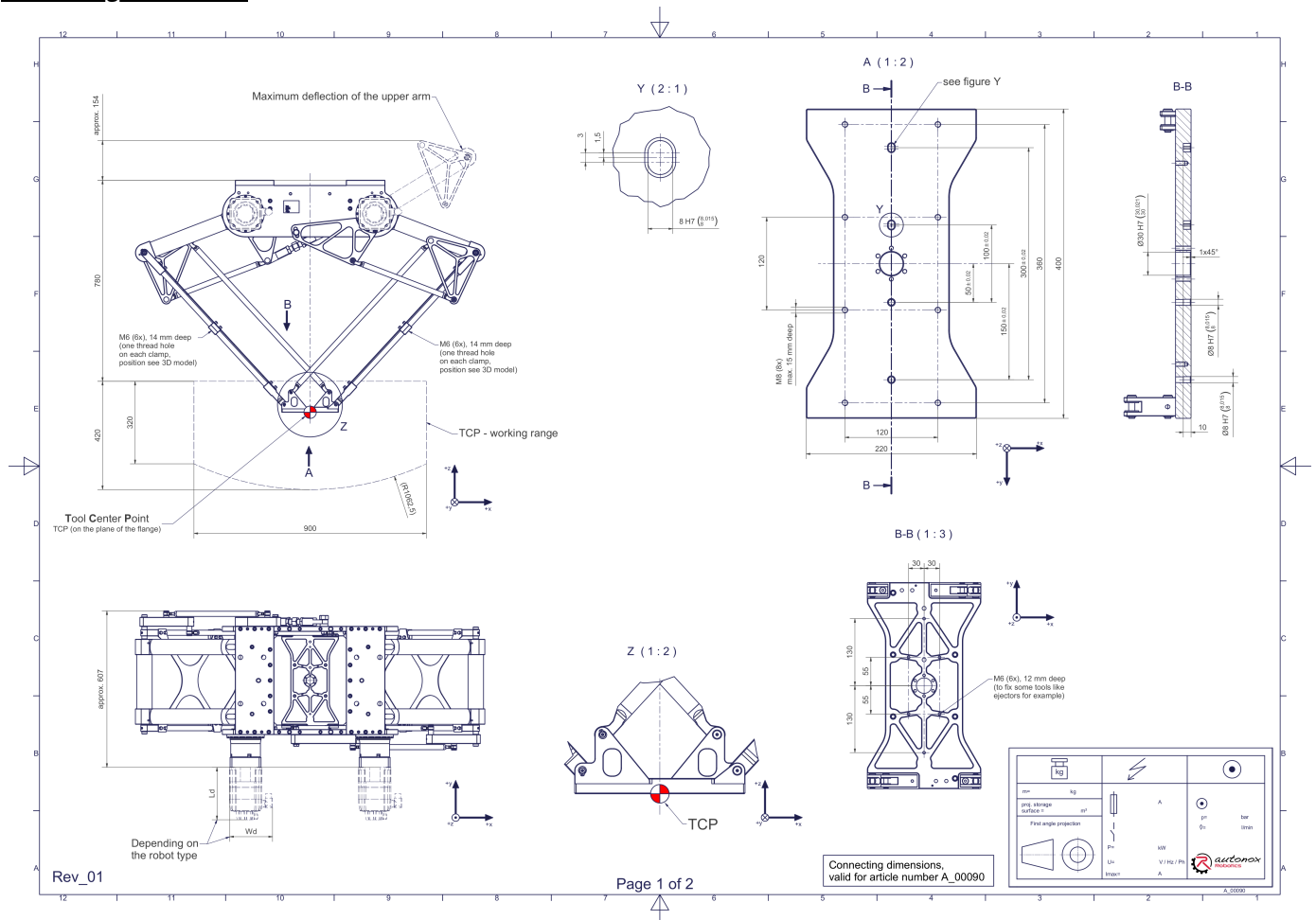
This type of robot is based on the principle of parallel kinematics. All drives are mounted in a fixed position on the robot head. Motor cables are not moved. The robot has two (2) translational degrees of freedom.

**Scope of delivery:**

Robot mechanics incl. gearbox, Servomotor adapter, Threaded protection caps, Transport and packing instructions

Note: The operating instructions and documentation on commissioning, service, maintenance, etc. are available in the password-protected download area of the respective product page ([www.autonoxfinder.com](http://www.autonoxfinder.com)).

**Connecting dimensions:**



**Downloads:** [Connecting dimensions \(PDF\)](#), [3D model \(STP\)](#), [3D model \(PDF\)](#)

We refer to our [General Terms of Sale and Supply](#) and [Terms of use](#).

## Technical specifications:

Field of application	Standard (not hygienic)
Kinematics	Parallel
Translatory Degrees of Freedom (X,Y,Z)	2
Rotational Degrees of Freedom ( $\alpha,\beta,\gamma$ )	0
Nominal payload [kg   lbs] *	40   88.2
Working area-width [mm   in]	900   35.4
Working height outside [mm   in]	320   12.6
Working height center [mm   in]	420   16.5
Bearing type of the arm joints	Roller bearing
Lubricants of the bearings	Food-grade (FO)
Lubricants of the gearboxes	Food-grade (FO)
Cleaning	No high pressure
Ambient temperature [ $^{\circ}\text{C}$   $^{\circ}\text{F}$ ]	0 to +40   +32 to +104
Relative humidity level [%]	95 (free of condensation)
Mounting position	Floor, Ceiling, Wall (on request), Angle (on request)
Robot weight without drive engineering (esp. drive) [kg   lbs]	71   156.5

\* All given values are nominal values (nominal payload referred to a nominal performance) and can vary under realworld conditions depending on the application (tool specifications, load distances, reduction (partly) of the nominal performance when using food-grade lubricants, ...). Please consider our technical data sheets regarding the load capacity.