

## DELTA RL4-TS1-ATS-1200-6kg

Article number: A\_00052-03-TS1-ATS-FO

Lubricant variant: Food-grade lubricants (FO)



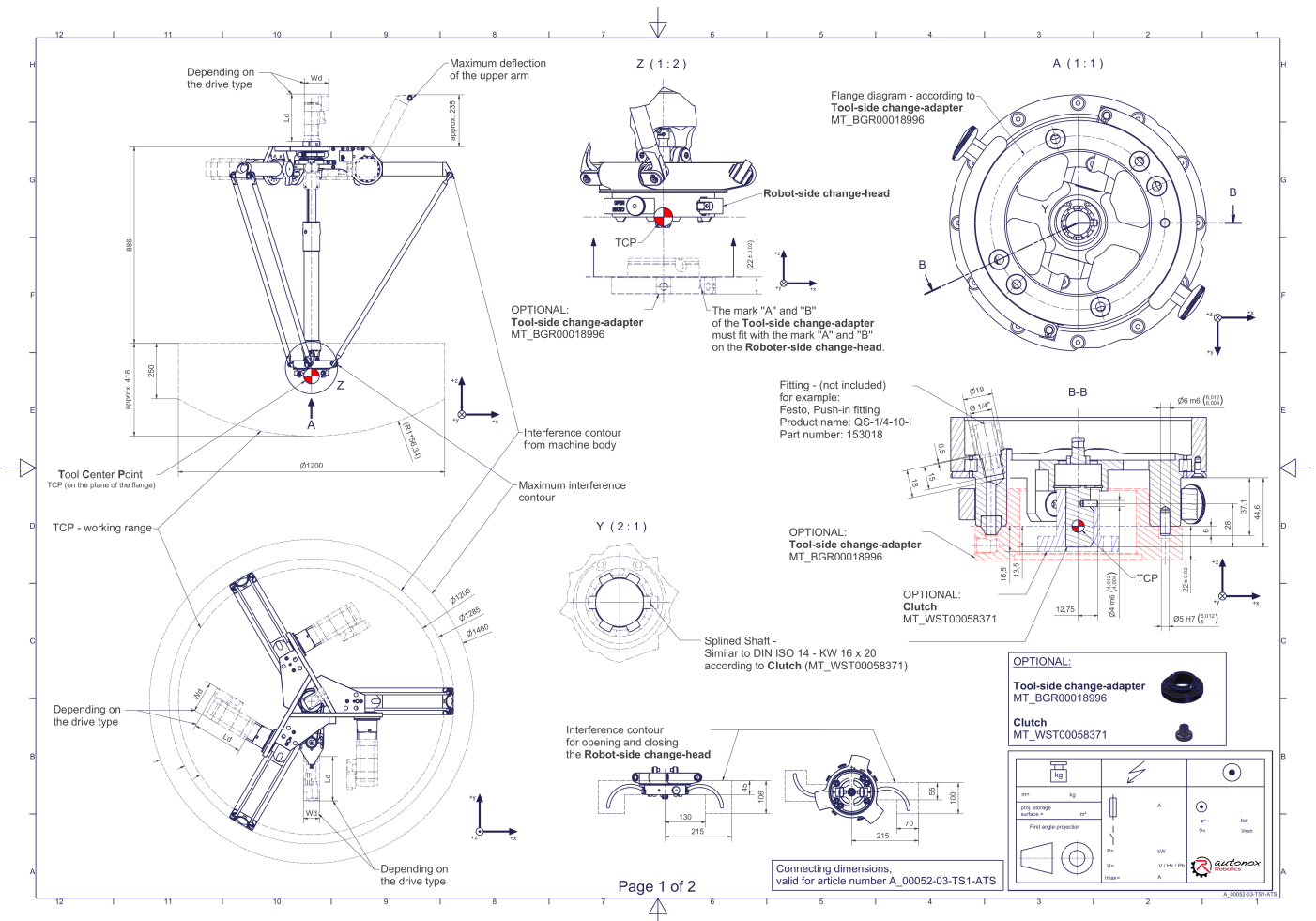
### Description:

This type of robot is based on the principle of parallel kinematics. All drives are mounted in a fixed position on the robot head. Motor cables are not moved. The robot has three (3) translational and one (1) rotational degree(s) of freedom.

### Scope of delivery:

Robot mechanics incl. gearbox, Servo motor adapter, Threaded protection caps, Transport and packing instructions

### Connecting dimensions:



Downloads: [Connecting dimensions \(PDF\)](#), [3D model \(STP\)](#), [3D model \(PDF\)](#)

We refer to our [General Terms of Sale and Supply](#) and [Terms of use](#).

## Technical specifications:

|  |  |
|--|--|
| Field of application   | Standard (not hygienic)  |
| Kinematics   | Parallel   |
| Translatory Degrees of Freedom (X,Y,Z)   | 3  |
| Rotational Degrees of Freedom ( $\alpha, \beta, \gamma$ )                              | 1  |
| Nominal payload [kg   lbs] *   | 6   13.2   |
| Working area-diameter [mm   in]  | 1200   47.2  |
| Working height outside [mm   in]   | 250   9.8  |
| Working height center [mm   in]  | 418   16.5   |
| Output type of the tool actuation  | Shaft (TS)   |
| Number of the tool actuation (telescopic shaft(s))                                     | 1  |
| Manual tool changing system ATS  | Sixfold media transmission (Compressed air 6 bar   87.0 psi / vacuum -850 mbar   -12.3 psi / min. inner- $\varnothing$ : 6 mm   0.24 in) |
| Max. acceleration torque of the rotation $\gamma$ around Z at the output [Nm   in.lbs] | 40   354.0   |
| Nominal torque of the rotation $\gamma$ around Z at the output [Nm   in.lbs]           | 33   292.1   |
| Max. speed of the rotation $\gamma$ around Z at the output [1/min]                     | 225  |
| Nominal speed of the rotation $\gamma$ around Z at the output [1/min]                  | 150  |
| Max. acceleration torque of the tool actuation T/TS1 at the output [Nm   in.lbs]       | 5,5   48.7   |
| Nominal torque of the tool actuation T/TS1 at the output [Nm   in.lbs]                 | 5,5   48.7   |
| Max. speed of the tool actuation T/TS1 at the output [1/min]                           | 800  |
| Nominal speed of the tool actuation T/TS1 at the output [1/min]                        | 800  |
| Bearing type of the telescopic shaft(s)  | Roller bearing   |
| Bearing type of the arm joints   | Roller bearing   |
| Lubricants of the bearings   | Food-grade (FO)  |
| Lubricants of the gearboxes  | Food-grade (FO)  |
| Cleaning   | No high pressure   |
| Ambient temperature [ $^{\circ}$ C   $^{\circ}$ F]                                     | 0 to +40   +32 to +104   |
| Relative humidity level [%]  | 95 (free of condensation)  |
| Mounting position  | Floor, Ceiling, Wall (on request), Angle (on request)  |
| Robot weight without drive engineering (esp. drive) [kg   lbs]                         | 43   94.8  |

\* All given values are nominal values (nominal payload referred to a nominal performance) and can vary under realworld conditions depending on the application (tool specifications, load distances, reduction (partly) of the nominal performance when using food-grade lubricants, ...). Please consider our technical data sheets regarding the load capacity.