

## DELTA RL5-1350-1kg

Article number: A\_00045.01-FO

Lubricant variant: Food-grade lubricants (FO)



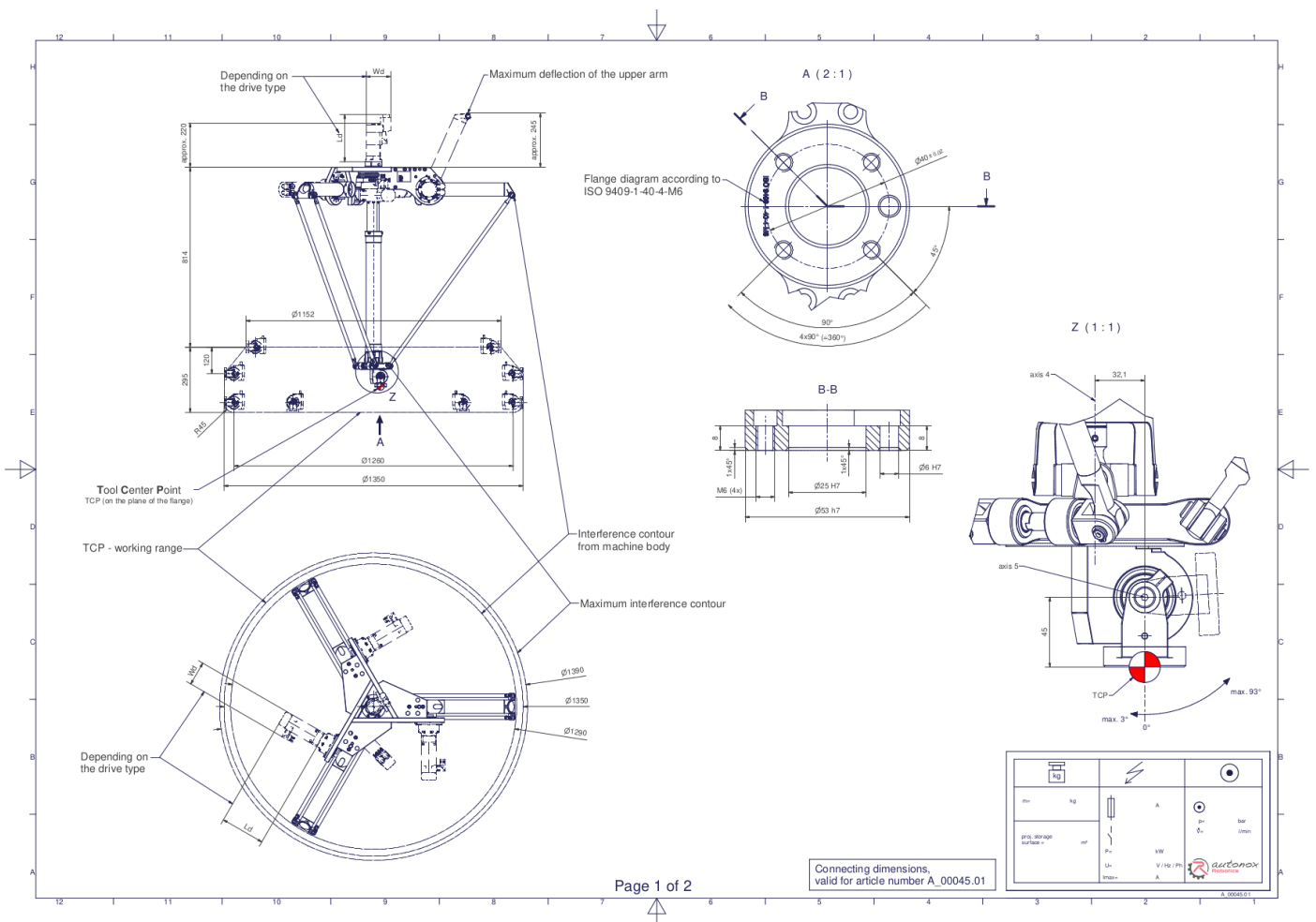
### Description:

This type of robot is based on the principle of parallel kinematics. All drives are mounted in a fixed position on the robot head. Motor cables are not moved. The robot has three (3) translational and two (2) rotational degrees of freedom.

### Scope of delivery:

Robot mechanics incl. gearbox, Servo motor adapter, Threaded protection caps, Transport and packing instructions

### Connecting dimensions:



Downloads: [Connecting dimensions \(PDF\)](#), [3D model \(STP\)](#), [3D model \(PDF\)](#)

We refer to our [General Terms of Sale and Supply](#), [Terms of use](#) and [Disclaimer and Copyright notices](#).

## Technical specifications:

Field of application	Standard (not hygienic)
Kinematics	Parallel
Translatory Degrees of Freedom (X,Y,Z)	3
Rotational Degrees of Freedom ( $\alpha, \beta, \gamma$ )	2
Nominal payload [kg   lbs] *	1   2.2
Working area-diameter [mm   in]	1350   53.1
Working height outside [mm   in]	295   11.6
Max. acceleration torque of the rotation $\alpha/\beta$ around X/Y at the output [Nm   in.lbs]	16   141.6
Nominal torque of the rotation $\alpha/\beta$ around X/Y at the output [Nm   in.lbs]	16   141.6
Max. speed of the rotation $\alpha/\beta$ around X/Y at the output [1/min]	82
Nominal speed of the rotation $\alpha/\beta$ around X/Y at the output [1/min]	82
Max. acceleration torque of the rotation $\gamma$ around Z at the output [Nm   in.lbs]	17   150.5
Nominal torque of the rotation $\gamma$ around Z at the output [Nm   in.lbs]	12,4   109.7
Max. speed of the rotation $\gamma$ around Z at the output [1/min]	500
Nominal speed of the rotation $\gamma$ around Z at the output [1/min]	380
Bearing type of the telescopic shaft(s)	Journal bearing, Roller bearing
Bearing type of the arm joints	Roller bearing
Lubricants of the bearings	Food-grade (FO)
Lubricants of the gearboxes	Food-grade (FO)
Cleaning	No high pressure
Ambient temperature [°C   °F]	0 to +40   +32 to +104
Relative humidity level [%]	95 (free of condensation)
Mounting position	Floor, Ceiling, Wall (on request), Angle (on request)
Robot weight without drive engineering (esp. drive) [kg   lbs]	34   75.0

\* All given values are nominal values (nominal payload referred to a nominal performance) and can vary under realworld conditions depending on the application (tool specifications, load distances, reduction (partly) of the nominal performance when using food-grade lubricants, ...). Please consider our technical data sheets regarding the load capacity.