

ARTICULATED articc.m6-2838-80kg

Article number: AT_00035

Lubricant variant: Synthetic lubricants



Description:

This type of robot is based on the principle of serial kinematics. All drives and motor cables are moved along. The robot has three (3) translational and three (3) rotational degrees of freedom. This robot mechanics was developed for applications that require high rigidity, good vibration damping and maximum precision. In the kinematics, axes 2, 3 and 5 are supported on both sides, which increases the rigidity accordingly. This model is sealed against abrasive dusts, liquids, etc. and can be pressurized with sealing air. Media supplies for the end effector can be routed protected inside the robot structure.

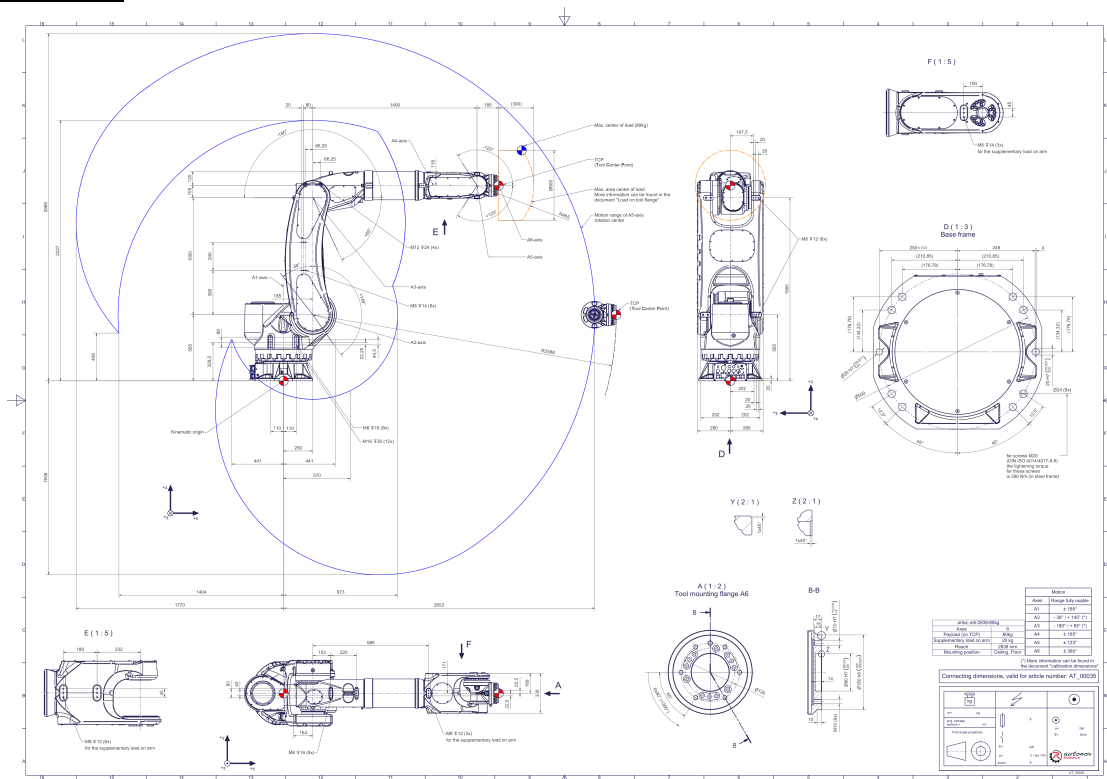
Scope of delivery:

Robot mechanics incl. gearbox, Free installation of drive technology provided (including incoming goods inspection), Multi-hour, logged test run as final quality inspection, Threaded protection caps, Transport and packing instructions

Required accessories:

Set of parts for installing the drive technology. This set consists of, for example, a servo motor adapter, servo motor cable, transmission input pinion, plug board (usually on the base frame).

Connecting dimensions:



Downloads: [Connecting dimensions \(PDF\)](#), [3D model \(STP\)](#), [3D model \(PDF\)](#)

We refer to our [General Terms of Sale and Supply](#), [Terms of use](#) and [Disclaimer and Copyright notices](#).

Technical specifications:

Field of application	Standard (not hygienic), CNC Robotics
Kinematics	Serial
Translatory Degrees of Freedom (X,Y,Z)	3
Rotational Degrees of Freedom (α, β, γ)	3
Nominal payload [kg lbs] *	80 176.4
Supplementary load on the arm [kg lbs]	20 44.1
Working area-reach [mm in]	2838 111.7
Lubricants of the bearings	Synthetic
Lubricants of the gearboxes	Synthetic
Integrated media supply to the end effector possible	Yes
Cleaning	No high pressure
Protection class	Axis 1: IP66, from axis 2: IP67
Ambient temperature [°C °F]	0 to +40 +32 to +104
Relative humidity level [%]	95 (free of condensation)
Mounting position	Floor, Ceiling
Robot weight without drive engineering (esp. drive) [kg lbs]	853 1880.5
Special features	This robot mechanics was developed for applications that demand high rigidity, good vibration damping and maximum precision. It is sealed against abrasive dusts, liquids, etc. and can be pressurized with sealing air.

* All given values are nominal values (nominal payload referred to a nominal performance) and can vary under realworld conditions depending on the application (tool specifications, load distances, reduction (partly) of the nominal performance when using food-grade lubricants, ...). Please consider our technical data sheets regarding the load capacity.